

**M0013631: Drawing of Universal Dispensary for Sick and Indigent Children, 1825**

**Publication/Creation**

July 1954

**Persistent URL**

<https://wellcomecollection.org/works/v594h4hu>

**License and attribution**

Conditions of use: it is possible this item is protected by copyright and/or related rights. You are free to use this item in any way that is permitted by the copyright and related rights legislation that applies to your use. For other uses you need to obtain permission from the rights-holder(s).



Wellcome Collection  
183 Euston Road  
London NW1 2BE UK  
T +44 (0)20 7611 8722  
E [library@wellcomecollection.org](mailto:library@wellcomecollection.org)  
<https://wellcomecollection.org>

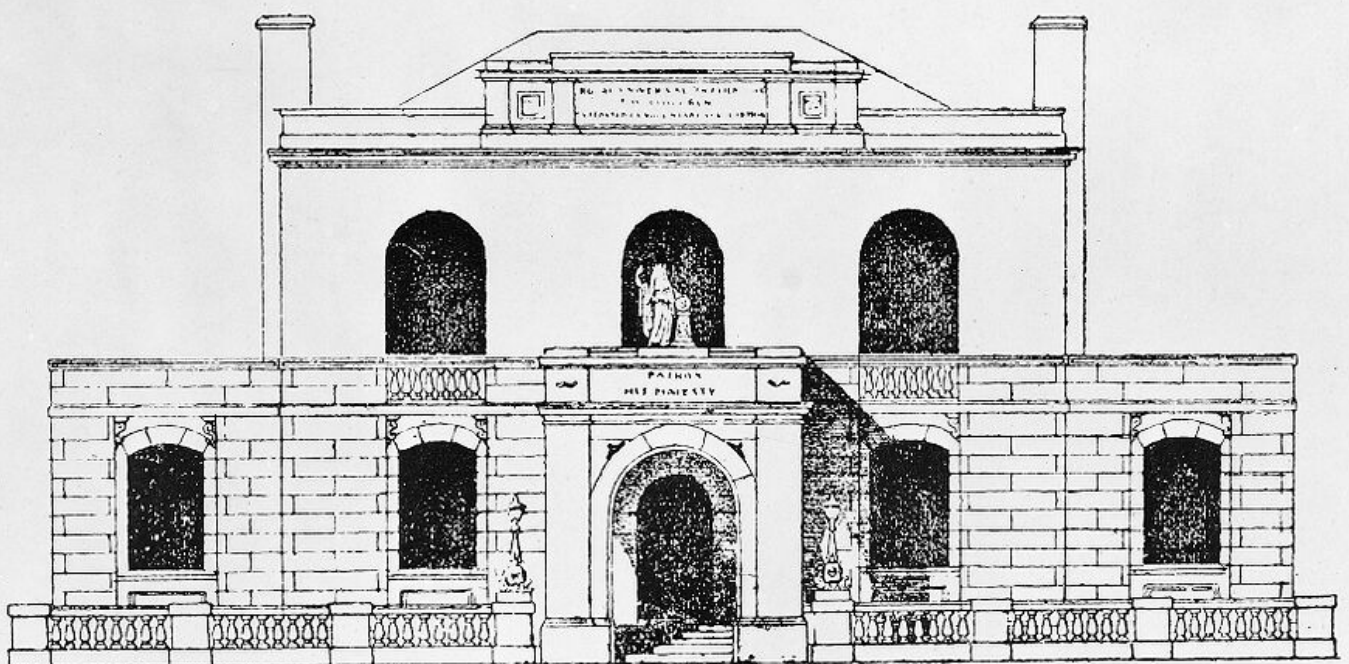


FIG. 8

The Universal Dispensary for Sick Indigent Children. An architect's drawing made in 1825 of the buildings occupied by the dispensary in Waterloo Road during the period 1822-52.