

**M0012671: Plans and elevations for a sea-bathing infirmary near Margate, 1801**

**Publication/Creation**

August 1952

**Persistent URL**

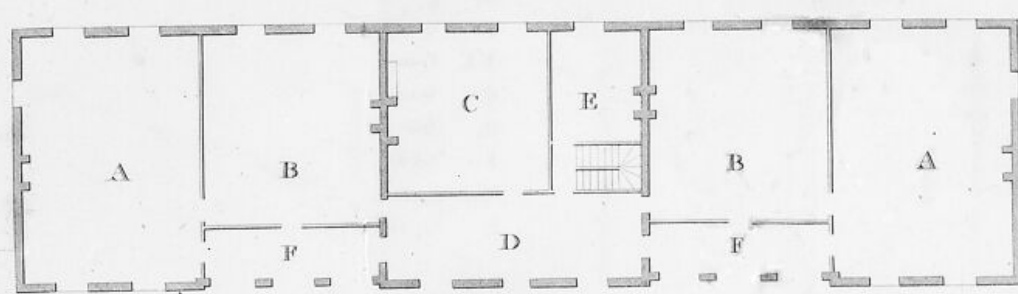
<https://wellcomecollection.org/works/vdwp7ck9>

**License and attribution**

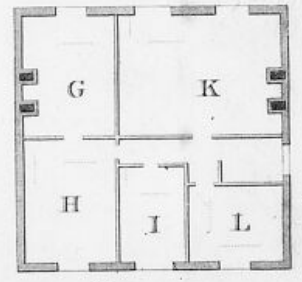
Conditions of use: it is possible this item is protected by copyright and/or related rights. You are free to use this item in any way that is permitted by the copyright and related rights legislation that applies to your use. For other uses you need to obtain permission from the rights-holder(s).



Wellcome Collection  
183 Euston Road  
London NW1 2BE UK  
T +44 (0)20 7611 8722  
E [library@wellcomecollection.org](mailto:library@wellcomecollection.org)  
<https://wellcomecollection.org>



- A.A. Wards 9 Beds each.
- B.B. Wards 6 Beds each. } Total 50.
- C. Kitchen.
- D. Hall.
- E. Overfeers Room.
- F.F. Piazza.
- G. Overfeers Sleeping Room.
- H. Store Room.
- I. Servants Room.
- K. Apothecarys Room.
- L. Medicine Room or Apothecarys Shop.



PLAN  
of the  
Attic Story.



*The General SEA BATHING INFIRMARY, near MARGATE.*