

**M0012338: Section on essential skills in the Gallery of Primitive Medicine,
Wellcome Historical Medical Museum, 1946**

Publication/Creation

February 1952

Persistent URL

<https://wellcomecollection.org/works/gg4q38ym>

License and attribution

You have permission to make copies of this work under a Creative Commons, Attribution license.

This licence permits unrestricted use, distribution, and reproduction in any medium, provided the original author and source are credited. See the Legal Code for further information.

Image source should be attributed as specified in the full catalogue record. If no source is given the image should be attributed to Wellcome Collection.



Wellcome Collection
183 Euston Road
London NW1 2BE UK
T +44 (0)20 7611 8722
E library@wellcomecollection.org
<https://wellcomecollection.org>

PRIMITIVE KNOWLEDGE

AT THE TIME OF DISCOVERY BY REPRESENTATIVES OF A HIGHER CIVILIZATION, ANY PRIMITIVE COMMUNITY HAS ALREADY HAD MILLERIA OF HISTORY AND DEVELOPMENT. IT HAS AN INBORN TRADITION, AN ORGANIZED SOCIAL AND KINSHIP SYSTEM, AND KNOWLEDGE CO-ORDINATED INTO PRECISE RITUALS AND TECHNIQUES.

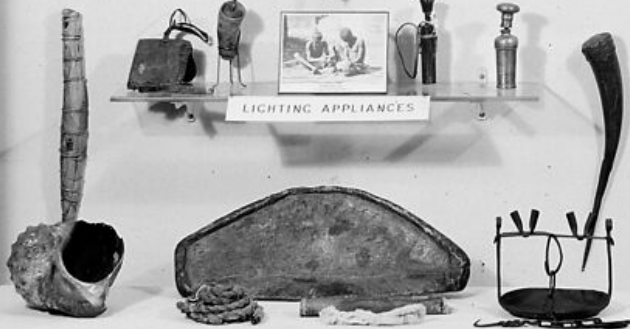
AT ALL LEVELS, PRIMITIVE PEOPLES KNOW THE FLORA AND FAUNA, THE ROCKS AND THE WATERS OF THEIR ENVIRONMENT, BETTER THAN CIVILIZED MAN. UTILITY DETERMINING THE PHASE KNOWN BEST, THEY KNOW HOW TO FABRICATE IMPLEMENTS AND WEAPONS, HOW TO MAKE FIRE AND USE IT TO HARDEN SOME WOODS AND SOFTEN OTHERS, TO BOIL WATER AND MODIFY FOOD FOR CONSUMPTION, TO RELIEVE PAIN AND STOP BLEEDING.

ALL PRIMITIVE PEOPLES CAN COUNT, IF IT IS ONLY UP TO FIVE; MOST HAVE SOME METHODS OF RECORDING AND COMMUNICATING; MANY HAVE MORE THAN RUDDIMENTS OF WEIGHING AND MEASURING.

FIRE-MAKING APPLIANCES



LIGHTING APPLIANCES



COUNTING AND RECORDING



WEIGHING AND MEASURING



CURRENCY

