

M0011949: Reproduction of an architecturally drawn plan of the anatomical theatre at Padua built by Girolamo Fabrici d'Acquapendente (1533-1619) in 1594

Publication/Creation

1951

Persistent URL

<https://wellcomecollection.org/works/p6buhj7d>

License and attribution

Conditions of use: it is possible this item is protected by copyright and/or related rights. You are free to use this item in any way that is permitted by the copyright and related rights legislation that applies to your use. For other uses you need to obtain permission from the rights-holder(s).



Wellcome Collection
183 Euston Road
London NW1 2BE UK
T +44 (0)20 7611 8722
E library@wellcomecollection.org
<https://wellcomecollection.org>

HIERONYMI FABRICII

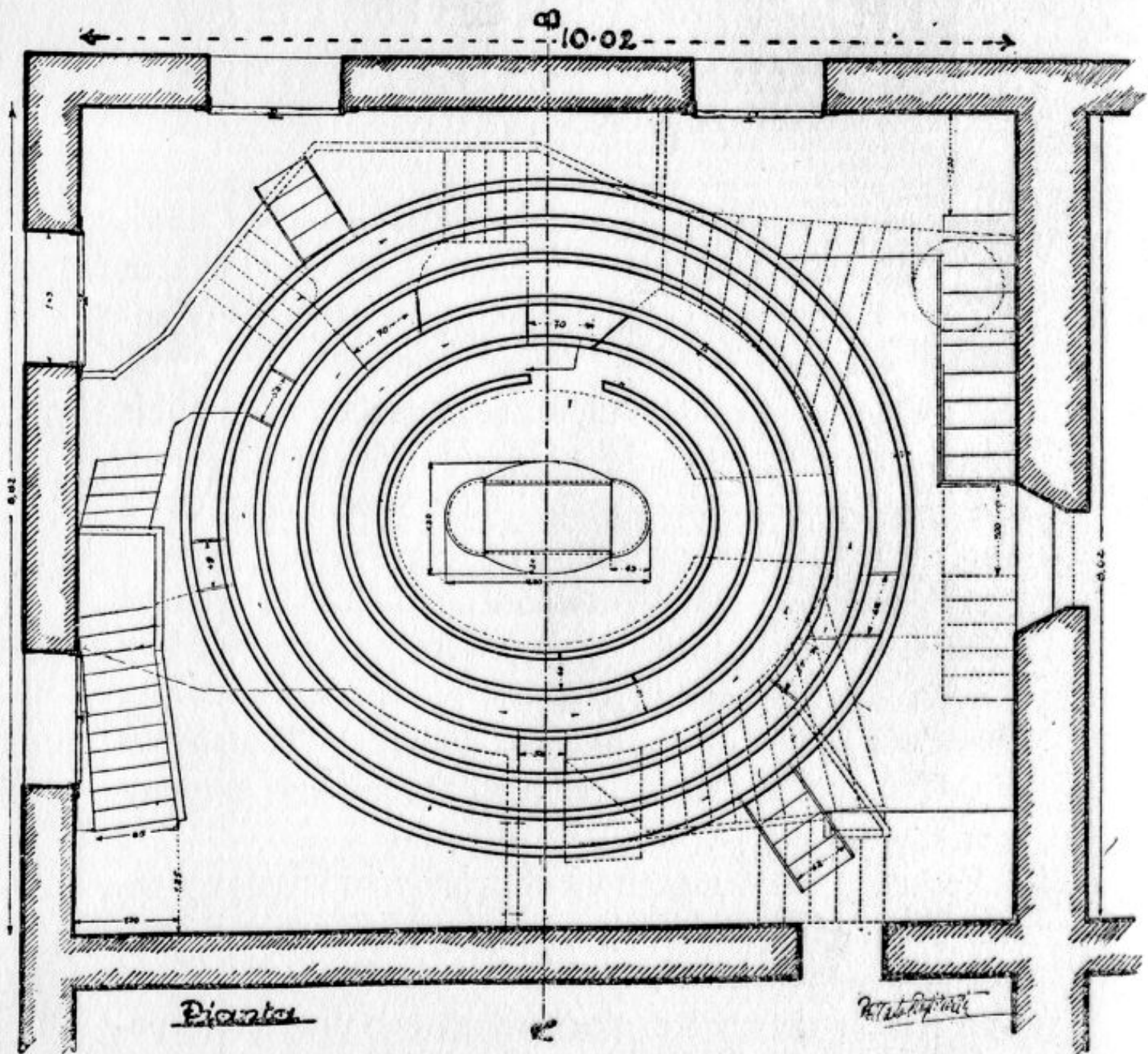


FIGURE 5.

FIGURES 5 AND 6.—Architect's drawings made at the suggestion of Charles Singer, and under the direction of Professor Castiglioni. The originals were exhibited at the Harvey Tercenary celebrations in 1928, and are now in the keeping of the Royal College of Physicians. Figure 5 gives the plan, Figure 6 the elevation (along the dotted line *AB* of Figure 5), of the anatomical lecture-theatre of Hieronymus Fabricius of Aquapendente. In Figure 5 I have emphasized one actual dimension (10.02 metres between the two arrows) at the top. In Figure 6 I have also emphasized one actual dimension (5.40 metres between the two arrows) at the top on the right.