

**M0011936: Reproduction of illustrations showing the evolution of the brain in "fossil" or prehistoric man created by Edgar Ashworth Underwood for the exhibition Prehistoric Man in Health and Disease held at Wellcome Historical Medical Museum in 1951**

**Publication/Creation**

1951

**Persistent URL**

<https://wellcomecollection.org/works/frtknsa4>

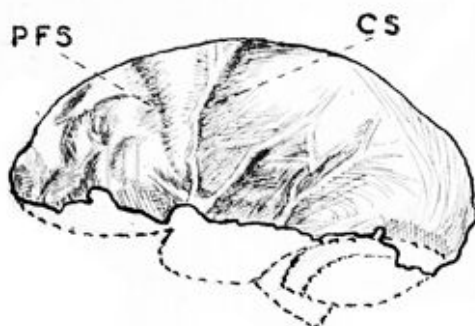
**License and attribution**

Conditions of use: it is possible this item is protected by copyright and/or related rights. You are free to use this item in any way that is permitted by the copyright and related rights legislation that applies to your use. For other uses you need to obtain permission from the rights-holder(s).

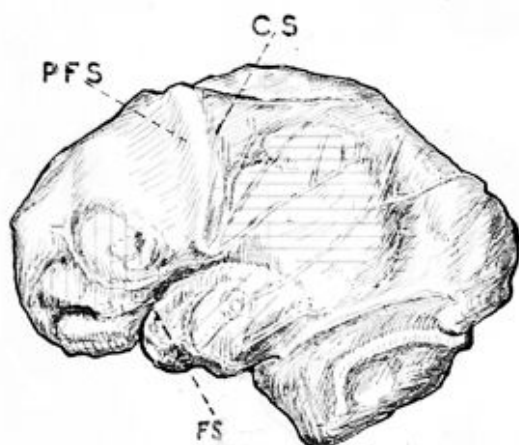


Wellcome Collection  
183 Euston Road  
London NW1 2BE UK  
T +44 (0)20 7611 8722  
E [library@wellcomecollection.org](mailto:library@wellcomecollection.org)  
<https://wellcomecollection.org>

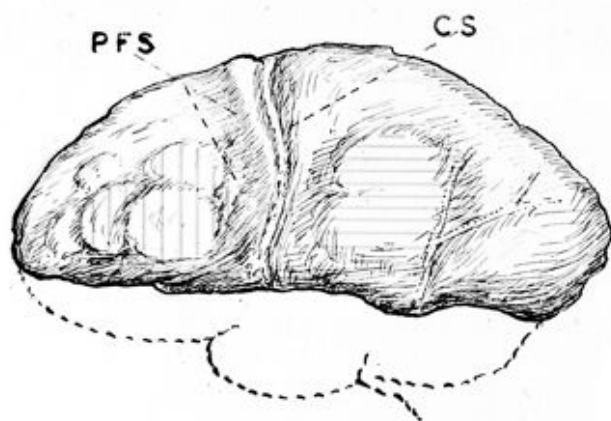
# THE BRAIN IN FOSSIL MAN



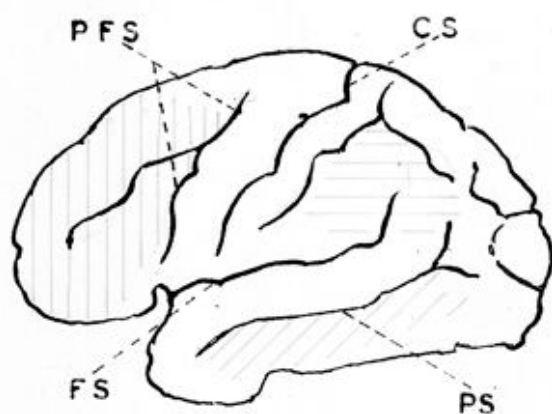
Pithecanthropus erectus (E.C.)



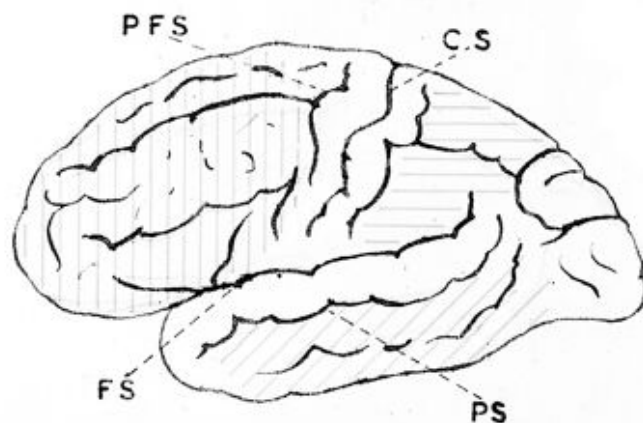
Rhodesian Man (E.C.)



Neanderthal Man (E.C.)



Australian aboriginal (L.H.)



Modern European (L.H.)



Prefrontal area



Parietal area



Temporal area

EC - Left side of endocranial cast

LH - Lateral surface, left cerebral hemisphere

PFS - Prefrontal sulcus

CS - Central sulcus

PS - Parallel sulcus

FS - Fissure of Sylvius