

**M0012121: Reproduction of a diagram showing muscles of the head, neck and thorax, from Theodore H. Bast's The anatomy of the rhesus monkey, 1933**

**Publication/Creation**

1951

**Persistent URL**

<https://wellcomecollection.org/works/ek4hpbam>

**License and attribution**

Conditions of use: it is possible this item is protected by copyright and/or related rights. You are free to use this item in any way that is permitted by the copyright and related rights legislation that applies to your use. For other uses you need to obtain permission from the rights-holder(s).



Wellcome Collection  
183 Euston Road  
London NW1 2BE UK  
T +44 (0)20 7611 8722  
E [library@wellcomecollection.org](mailto:library@wellcomecollection.org)  
<https://wellcomecollection.org>

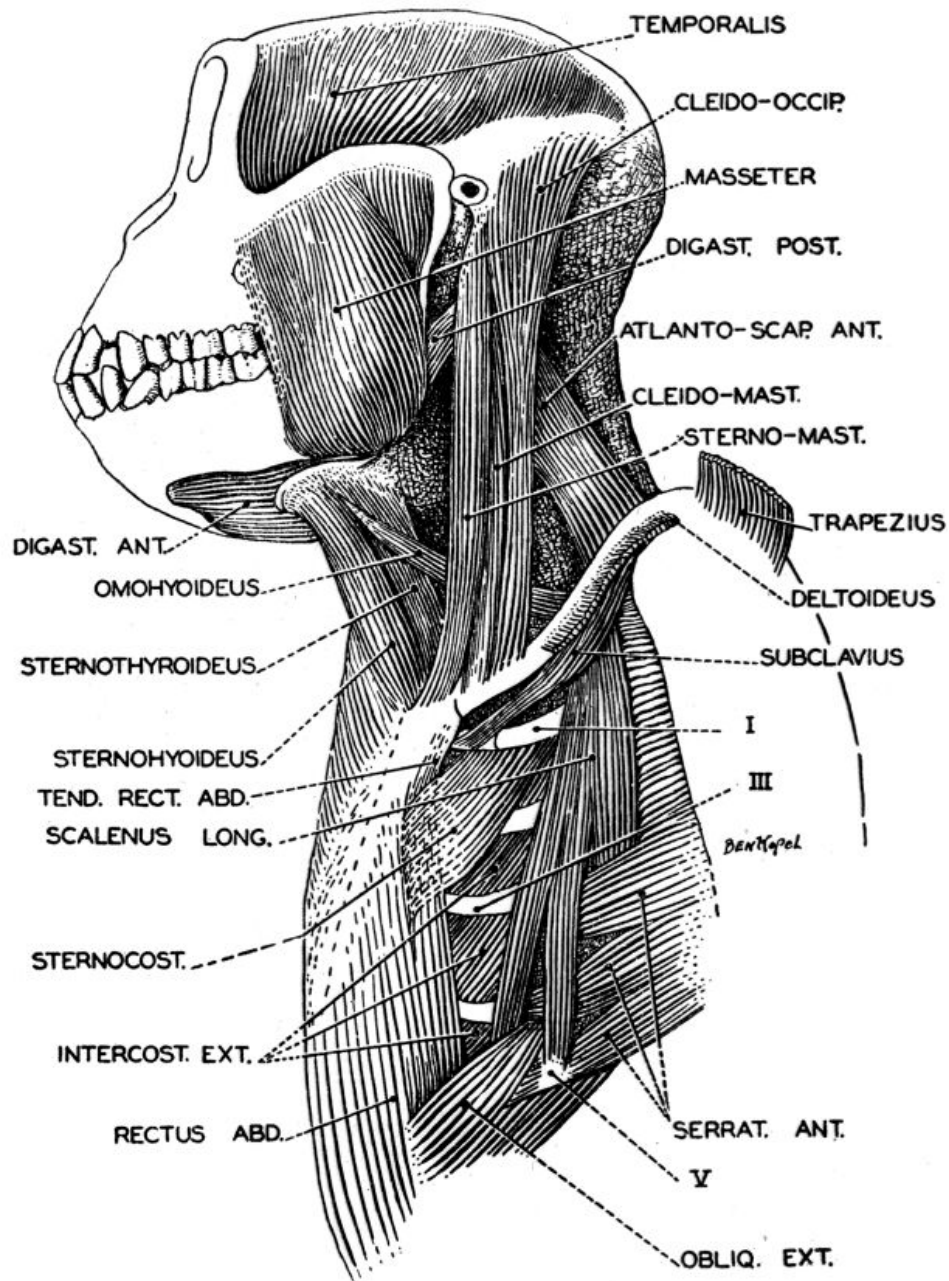


FIG. 35. Muscles of the head, neck and thorax. The facial and pectoral muscles have been removed. Left lateral view.