

M0011935: Reproduction of illustrations showing the evolution of the brain of the primates created by Edgar Ashworth Underwood for the exhibition Prehistoric Man in Health and Disease held at Wellcome Historical Medical Museum in 1951

Publication/Creation

1951

Persistent URL

<https://wellcomecollection.org/works/cq2vp29a>

License and attribution

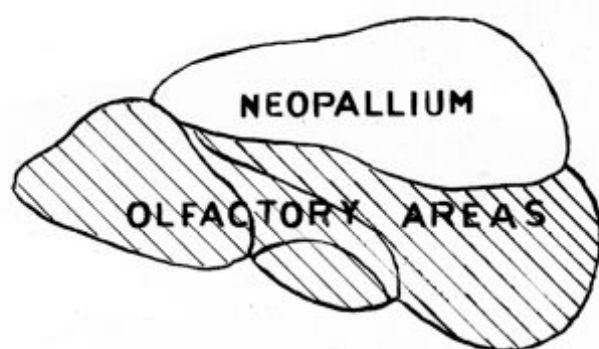
Conditions of use: it is possible this item is protected by copyright and/or related rights. You are free to use this item in any way that is permitted by the copyright and related rights legislation that applies to your use. For other uses you need to obtain permission from the rights-holder(s).



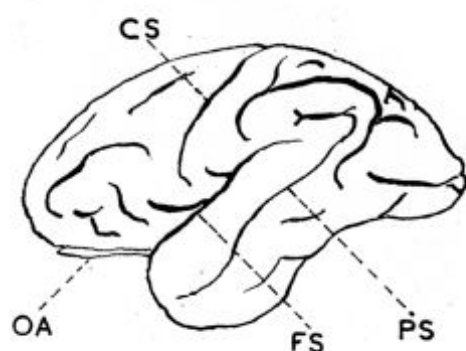
Wellcome Collection
183 Euston Road
London NW1 2BE UK
T +44 (0)20 7611 8722
E library@wellcomecollection.org
<https://wellcomecollection.org>

THE EVOLUTION OF THE BRAIN OF THE PRIMATES

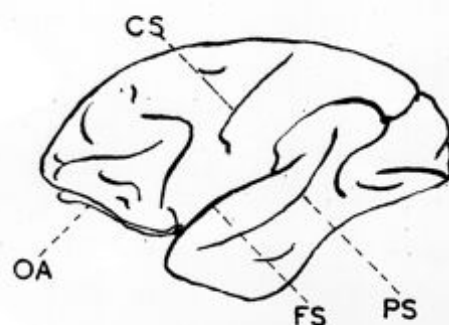
(Left cerebral hemisphere)



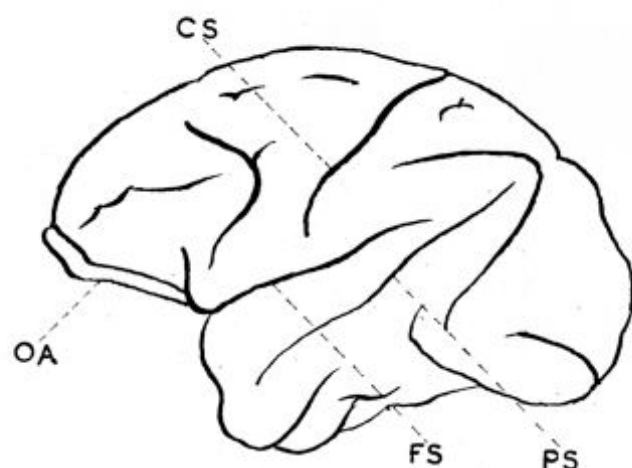
Primitive mammal



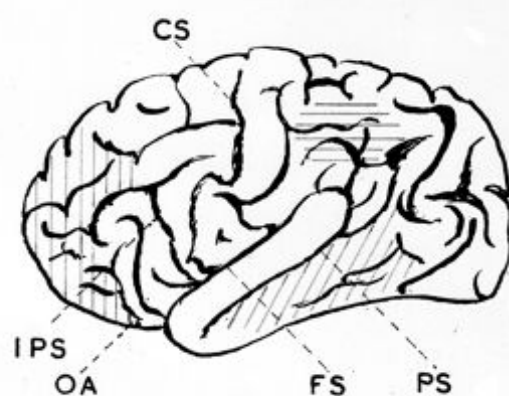
Gibbon



Cercopithecus



Macaque



Gorilla

P.S.- Parallel sulcus

C.S.- Central sulcus

I.P.S.-Inferior precentral sulcus

O.A.-Olfactory lobe or area

F.S.-Fissure of Sylvius