

M0012368: Drawings by Leonardo da Vinci showing the structure of the arms and legs

Publication/Creation

March 1952

Persistent URL

<https://wellcomecollection.org/works/q83afpcz>

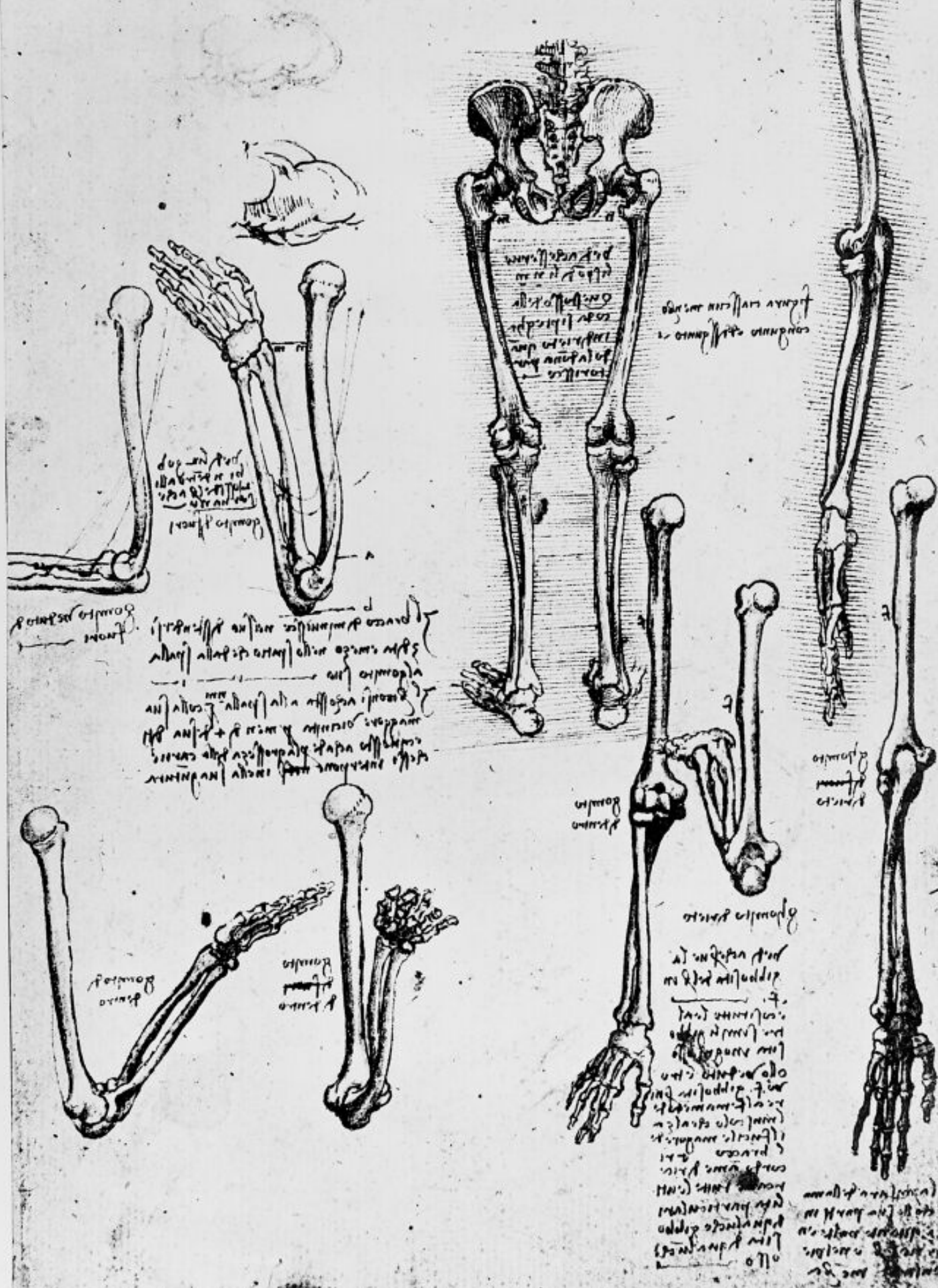
License and attribution

Conditions of use: it is possible this item is protected by copyright and/or related rights. You are free to use this item in any way that is permitted by the copyright and related rights legislation that applies to your use. For other uses you need to obtain permission from the rights-holder(s).



Wellcome Collection
183 Euston Road
London NW1 2BE UK
T +44 (0)20 7611 8722
E library@wellcomecollection.org
<https://wellcomecollection.org>

On the left side of the page, there is a block of handwritten text in a cursive script, likely Latin or a similar historical language. The text is arranged in several lines and appears to be a descriptive or instructional passage related to the anatomical drawings.



This block of text is located to the left of the arm bone drawings. It consists of several lines of handwritten text, providing a detailed description of the anatomical structures shown in the adjacent drawings.

This block of text is positioned in the center of the page, overlapping the lower part of the central skeleton drawing. It contains several lines of handwritten text, likely describing the central skeletal structure.

This block of text is located to the right of the central skeleton drawing, above the leg bone drawing. It contains a few lines of handwritten text, possibly describing the leg bone or the overall posture.

This block of text is situated in the lower-left quadrant of the page, between the arm bone drawings and the hand/foot bone drawings. It contains several lines of handwritten text, likely describing the lower limb or hand anatomy.

This is a small, isolated block of handwritten text located near the lower leg bone drawing.

This block of text is located in the lower-right quadrant of the page, between the leg bone drawing and the hand/foot bone drawings. It contains several lines of handwritten text, likely describing the foot and hand bones.

This is a final block of handwritten text at the bottom right corner of the page, providing additional notes or a summary related to the anatomical study.