

M0012435: Wellcome Historical Medical Museum exhibition: "British medicine and the Continent, 1600-1850": section IX

Publication/Creation

April 1952

Persistent URL

<https://wellcomecollection.org/works/p5xpkyg4>

License and attribution

You have permission to make copies of this work under a Creative Commons, Attribution license.

This licence permits unrestricted use, distribution, and reproduction in any medium, provided the original author and source are credited. See the Legal Code for further information.

Image source should be attributed as specified in the full catalogue record. If no source is given the image should be attributed to Wellcome Collection.



Wellcome Collection
183 Euston Road
London NW1 2BE UK
T +44 (0)20 7611 8722
E library@wellcomecollection.org
<https://wellcomecollection.org>

RISE OF THE DUTCH SCHOOL



Portrait of a woman, likely a Dutch artist or patron, displayed in an oval frame.

Textual information, likely a biographical sketch or historical context, positioned centrally at the top of the display.



Portrait of a woman, likely a Dutch artist or patron, displayed in an oval frame.



Group portrait painting, possibly depicting a family or a group of figures.



Group portrait painting, possibly depicting a family or a group of figures.



Group portrait painting, possibly depicting a family or a group of figures.



Anatomical diagram or technical drawing, possibly related to a mechanical device.



Small framed portrait or document.



Anatomical diagram or technical drawing, possibly related to a human figure.



A miniature model or diorama, possibly depicting a dining table or a social gathering.



Anatomical diagram or technical drawing, possibly related to a plant or insect.



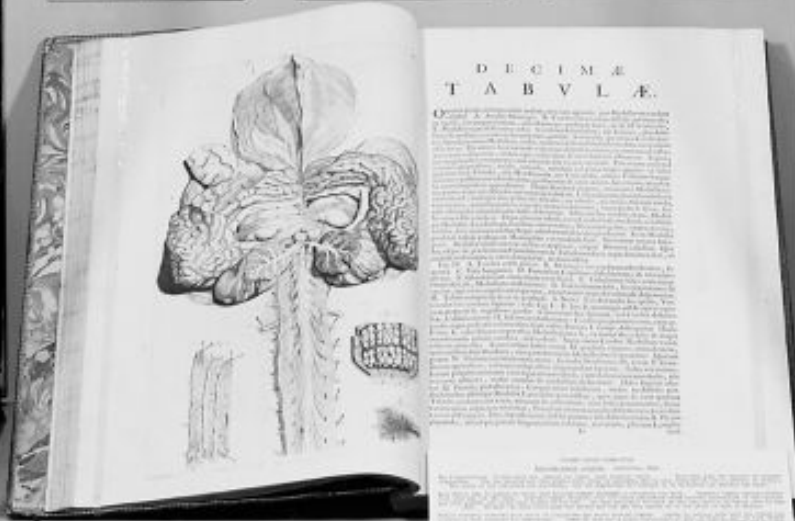
Portrait of a woman, likely a Dutch artist or patron, displayed in an oval frame.



Portrait of a woman, likely a Dutch artist or patron, displayed in an oval frame.



Portrait of a man, likely a Dutch artist or patron, displayed in an oval frame.



DECIME TABVLE

Detailed text from the book, likely a scientific or medical treatise, positioned on the right page of the open book.