

**M0012315: Amulets on display in the Gallery of Primitive Medicine,  
Wellcome Historical Medical Museum, 1946**

**Publication/Creation**

February 1952

**Persistent URL**

<https://wellcomecollection.org/works/gbtwtws6>

**License and attribution**

You have permission to make copies of this work under a Creative Commons, Attribution license.

This licence permits unrestricted use, distribution, and reproduction in any medium, provided the original author and source are credited. See the Legal Code for further information.

Image source should be attributed as specified in the full catalogue record. If no source is given the image should be attributed to Wellcome Collection.



Wellcome Collection  
183 Euston Road  
London NW1 2BE UK  
T +44 (0)20 7611 8722  
E [library@wellcomecollection.org](mailto:library@wellcomecollection.org)  
<https://wellcomecollection.org>



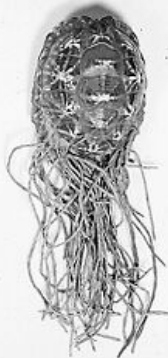
FIGURE OF 8541

THE STATE OF NEW YORK, COUNTY OF ALBANY, ss.

I, the undersigned, Clerk of the County of Albany, do hereby certify that the within and foregoing is a true and correct copy of the original of the same, as the same appears from the records of the County of Albany.

WITNESSED my hand and the seal of the County of Albany, this 1st day of January, 1901.

FIGURE 10-10  
 (a) A diagram of a simple circuit with a battery, a switch, and a light bulb. The switch is open, and the bulb is not lit.  
 (b) A diagram of a simple circuit with a battery, a switch, and a light bulb. The switch is closed, and the bulb is lit.

[illegible]