

M0011751: Reproduction of an illustration of the brain from Andreas Vesalius' De humani corporis fabrica, 1543

Publication/Creation

1951

Persistent URL

<https://wellcomecollection.org/works/ht5jjm6q>

License and attribution

Conditions of use: it is possible this item is protected by copyright and/or related rights. You are free to use this item in any way that is permitted by the copyright and related rights legislation that applies to your use. For other uses you need to obtain permission from the rights-holder(s).



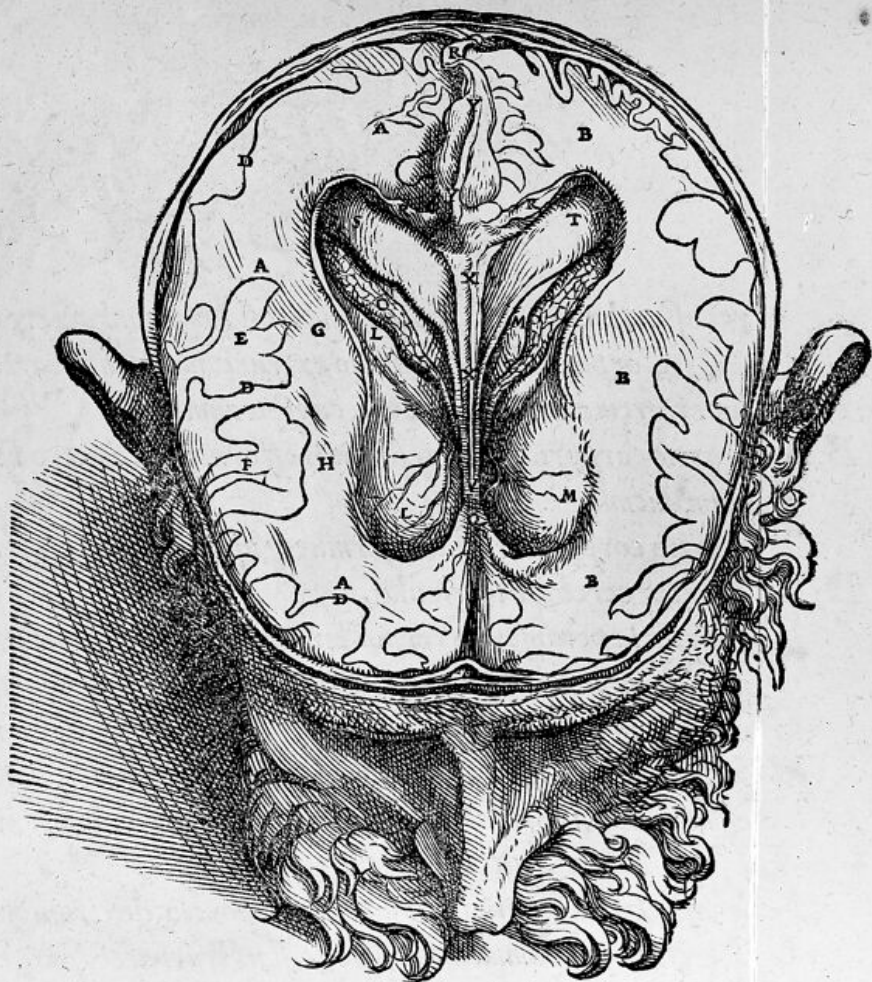
Wellcome Collection
183 Euston Road
London NW1 2BE UK
T +44 (0)20 7611 8722
E library@wellcomecollection.org
<https://wellcomecollection.org>

QVINTA SEPTIMI LIBRI FIGVRA.

PRÆSENS figura
quod ad relictam in caluaria
cerebri portionē attinet, nul-
la ex parte uariat: atq; id solū
habet proprium, quod callo-
sum corpus hic anteriori sua se-
de à cerebro primū liberau-
mus, ac dein eleuatum in poste-
riora refleximus, septum dex-
tri ac sinistri uentriculorum di-
uellentes, & corporis instar
testudinis extructi superiorem
superficiem ob oculos ponētes.

Ab A A, A, A itaq; & B, B,
ad Q. B, ac dein D, D, D, & E
& F, & G & H eadem
hic indicant, quæ in quarta fi-
gura. Sic quoque & L, L, &
M, M, & O & P & Q
eadem insinuant.

R, R, R Notatur inferior callosi corporis superficies. est enim id à sua sede motum, atque in poste-
riora reflexum.



S, T, V Supe-