

M0011394: Anterior and posterior roots of a spinal nerve, from Gray's anatomy, 1949

Publication/Creation

April 1950

Persistent URL

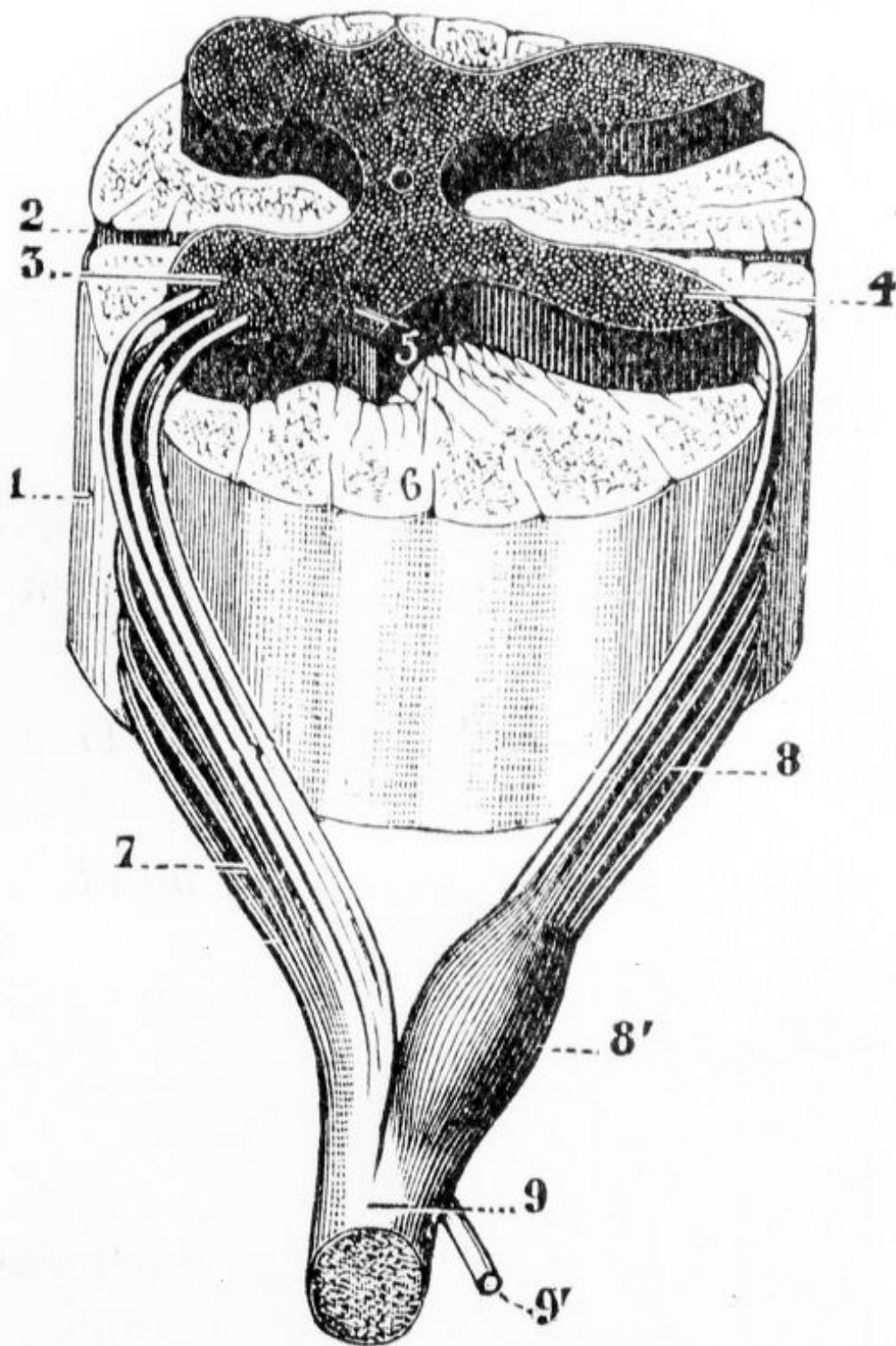
<https://wellcomecollection.org/works/pkrqk7bk>

License and attribution

Conditions of use: it is possible this item is protected by copyright and/or related rights. You are free to use this item in any way that is permitted by the copyright and related rights legislation that applies to your use. For other uses you need to obtain permission from the rights-holder(s).



Wellcome Collection
183 Euston Road
London NW1 2BE UK
T +44 (0)20 7611 8722
E library@wellcomecollection.org
<https://wellcomecollection.org>



1. A portion of the spinal cord viewed from the left side. 2. Anterior median fissure. 3. Anterior grey column. 4. Posterior grey column. 5. Lateral grey column. 6. Formatio reticularis. 7. Anterior root. 8. Posterior root, with 8', its ganglion. 9. Spinal nerve; and 9', its posterior primary ramus.