

## **M0011262: Earliest microphotographs of human blood cells**

### **Publication/Creation**

1950

### **Persistent URL**

<https://wellcomecollection.org/works/cn3hpdka>

### **License and attribution**

This work has been identified as being free of known restrictions under copyright law, including all related and neighbouring rights and is being made available under the Creative Commons, Public Domain Mark.

You can copy, modify, distribute and perform the work, even for commercial purposes, without asking permission.



Wellcome Collection  
183 Euston Road  
London NW1 2BE UK  
T +44 (0)20 7611 8722  
E [library@wellcomecollection.org](mailto:library@wellcomecollection.org)  
<https://wellcomecollection.org>

Fig. 0.

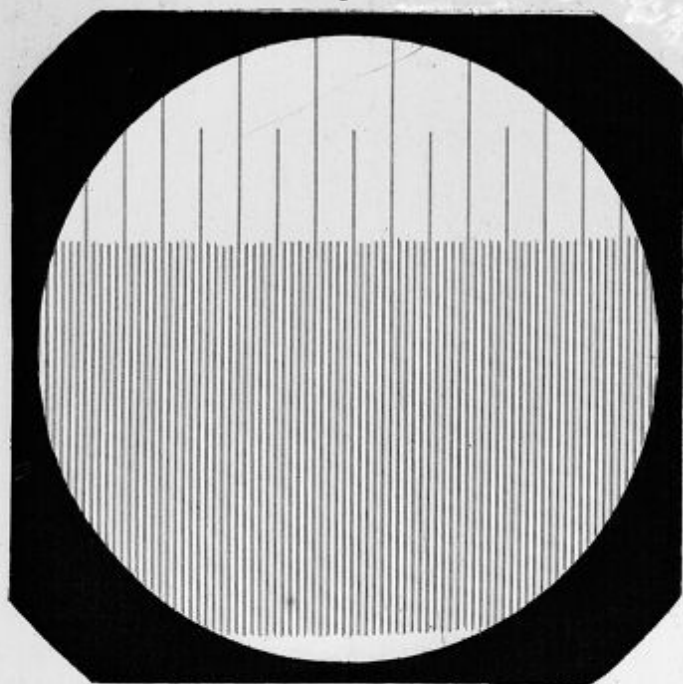


Fig. 2.

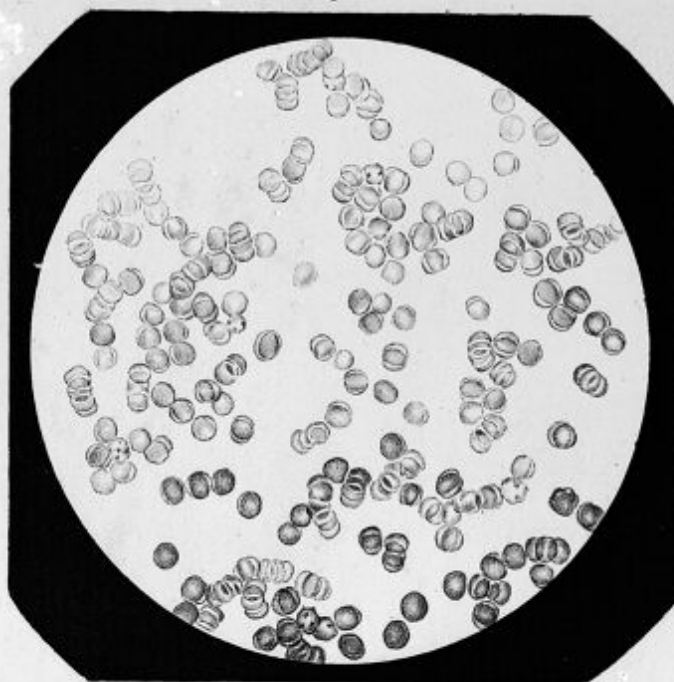


Fig. 3.

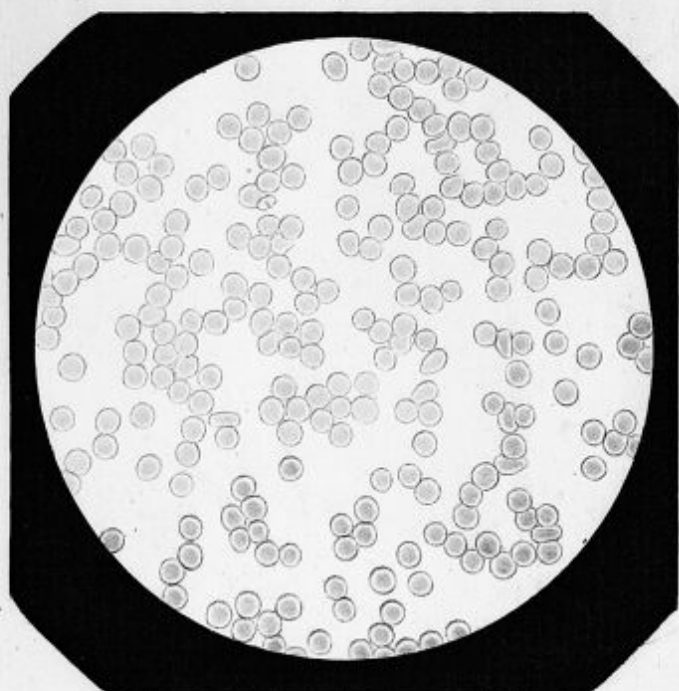
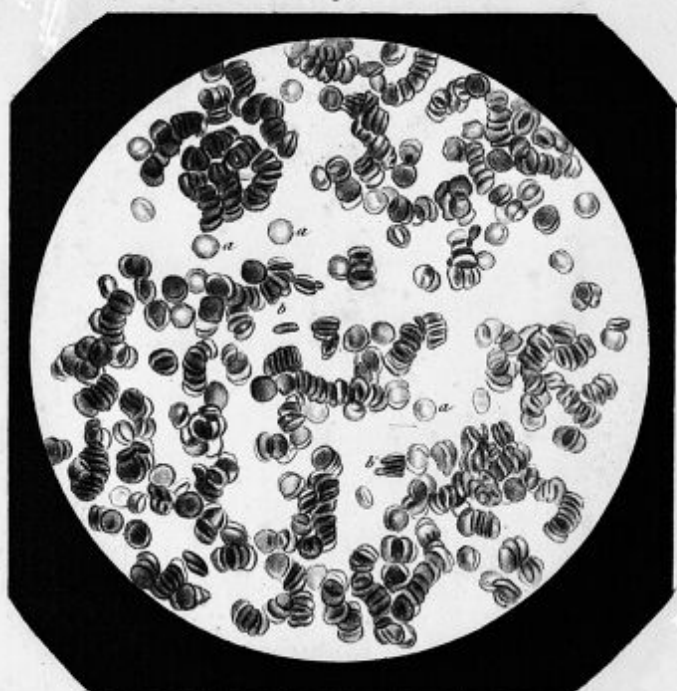


Fig. 4.



*Pris au Microscope, Daguerreotype par L. Foucault.*

*Grossi par doublet.*

Fig. 0. Micromètre. millimètre divisé en 400 parties grossi 400 fois.

Fig. 2. Globules de sang humain avec le centre clair.

Fig. 3. Globules de sang humain avec le centre obscur.

Fig. 4. Globules de sang humain sous divers aspects.