

M0011335: The anatomy of the eye

Publication/Creation

1950

Persistent URL

<https://wellcomecollection.org/works/vuarm5mg>

License and attribution

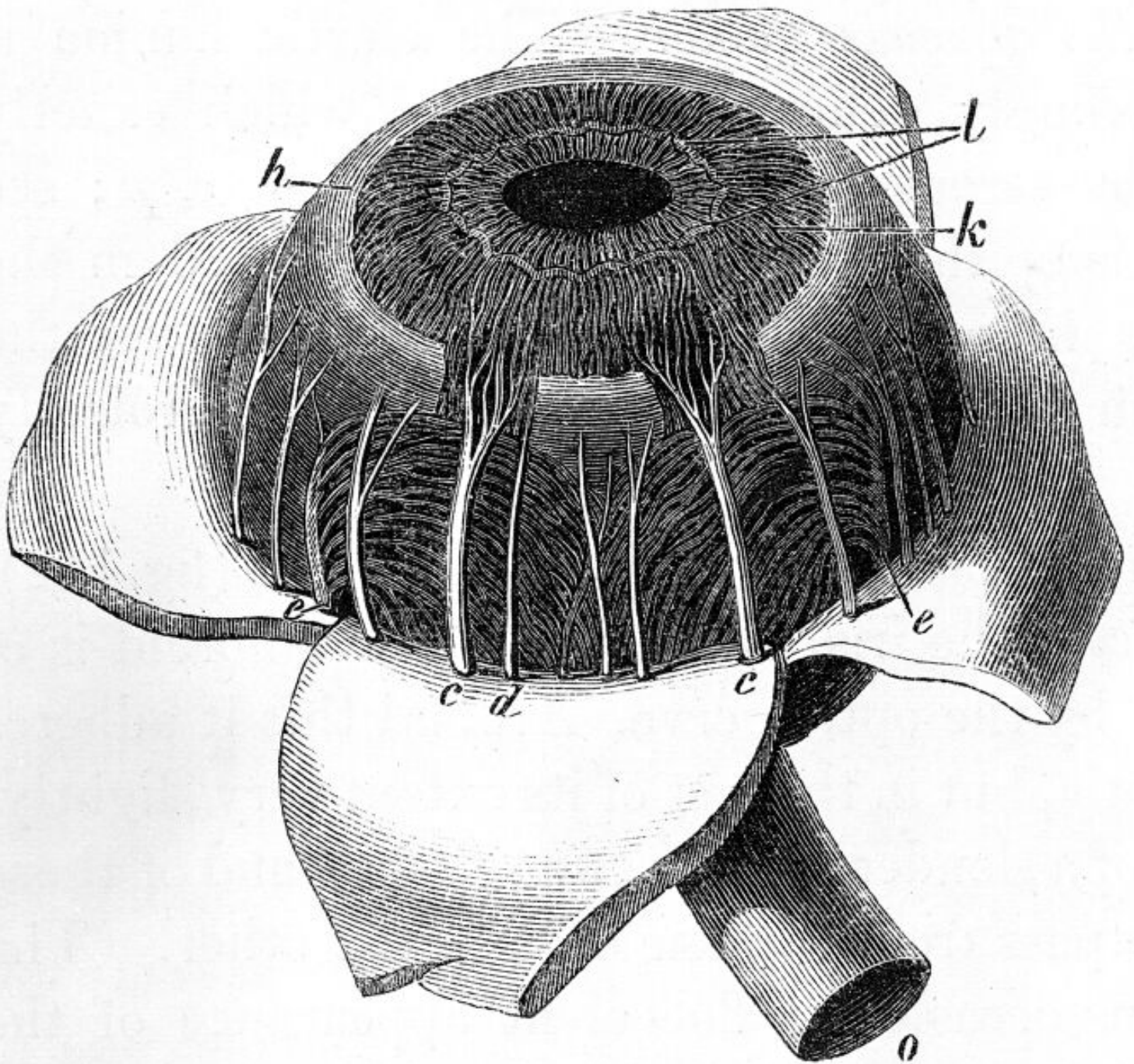
This work has been identified as being free of known restrictions under copyright law, including all related and neighbouring rights and is being made available under the Creative Commons, Public Domain Mark.

You can copy, modify, distribute and perform the work, even for commercial purposes, without asking permission.



Wellcome Collection
183 Euston Road
London NW1 2BE UK
T +44 (0)20 7611 8722
E library@wellcomecollection.org
<https://wellcomecollection.org>

Fig. 112.



Choroid and Iris, exposed by turning aside the sclerotic:—*c, c.* Ciliary nerves branching in the iris. *d.* Smaller ciliary nerve. *e, e.* Vasa vorticosa. *h.* Ciliary ligament and muscle. *k.* Converging fibres of the greater circle of the iris. *l.* Looped and knotted form of these near the pupil, with the converging fibres of the lesser circle of the iris within them. *o.* The optic nerve.—From Zinn.