

## **M0011128: Vesalius: De humani corporis fabrica, 1543: illustration**

### **Publication/Creation**

November 1949

### **Persistent URL**

<https://wellcomecollection.org/works/wg82hds9>

### **License and attribution**

This work has been identified as being free of known restrictions under copyright law, including all related and neighbouring rights and is being made available under the Creative Commons, Public Domain Mark.

You can copy, modify, distribute and perform the work, even for commercial purposes, without asking permission.



Wellcome Collection  
183 Euston Road  
London NW1 2BE UK  
T +44 (0)20 7611 8722  
E [library@wellcomecollection.org](mailto:library@wellcomecollection.org)  
<https://wellcomecollection.org>

# CHARTA PARVAS ALIQVOT FIGVRAS COM

PLECTENS, QVÆ FIGVRÆ AD COMMONSTRANDAM VENARUM arteriarumq; simul commissarum seriem paratæ, ac in pagina m 3, aut numero 313 insignita obuiæ, ueniunt agglutinandæ.

PRIMA.

TERTIA.

SEXTA.

VT figuras hac charta impressas commo-  
dè suis sedibus glutines,  
illæq; ualidiores reddun-  
tur, primum præsentem  
chartæ membranam sub  
glutinabis, singulasq; fi-  
guras à superfusa papy-  
ro rescabis. **PRIMA**,  
quæ uenæ pa-  
ri carentis distributio-  
nem proponit, magnæ fi-  
guræ tergo illic uenit cõ-  
mittenda, ubi caua cau-  
dex eam uenam pronit.  
ac o in utrisque figuris  
scriptis spectantur. **SE-  
CVNDA**, ubi à  
redundanti papyro cir-  
cuncisa erit, duas partes  
constituet, quarum super-  
rior uenam arteriam que  
dexteri lateris exprimit,  
sub pectoris osse superio-  
rem abdominis sedem pe-  
tentem. Huius itaq; par-  
tis q ad magnæ figuræ  
q figitur, & \* ad ra-  
mum qui ad dextrum la-  
tus & m in magna  
figura occurrit. Cæte-  
rüm humilior pars uenæ  
arteriamq; exprimens,  
quæ inferiorem abdomi-  
nis sedem implicat, illic  
est iungenda, ubi earum  
radices iuxta l in dex-  
tro latere spectantur.

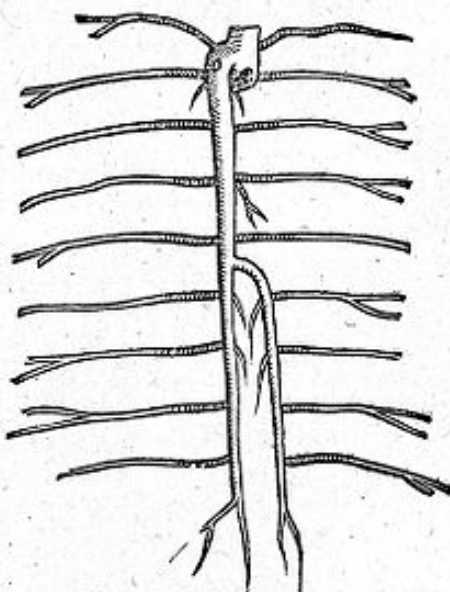
**TERTIA**  
cæteris dignior, uenæ  
portæ distributionem si-  
mul cū arterijs illam con-  
comitantibus, magnæ que  
inferioris membranæ o-  
menti porzione & liene  
pariter exprimens, ad ca-  
uam iccoris sedem maiori  
figura necessest, ubi v  
p, s, & contermini ali-  
quot characteres in utris-  
que figuris spectantur.

**QVARTA**  
portionem gibbæ sedis ie-  
coris proponens, nō inu-  
oluitur uelut ex puncto il-  
lic glutinabitur, ubi A  
inter s & F maioris  
figura consistit.

**QVINTA**  
præter testes ischorumq;  
inuoluta, & urinariorum  
meatus, uenas arteriasq;  
females ostendens, illic  
est committenda, ubi n in  
ambabus figuris obuium  
est, aut ubi uenæ femoralis arteria primū iungitur, meatusq; urinarij illis subiiciuntur.

**SEXTA** primū sub **SEPTIMA** uenit glutinanda. Septima enim uesicæ & penis anteriorem sedem proponit, unā cum u-  
sis quæ umbilico ascribimus. Sexta autem humilior penis superficiem in hoc expressimus, ut tota figura ex ambabus illis consurgens, caractere p  
super quinque figuræ q necessest, ac postmodum penis instar S implicari.

**OCTAVA** figura mulieris uesicam & umbilici uasa, urinariorumq; meatus portionem continens, maiori non est committenda, sed illi fi-  
gura quæ in chartæ tergo ubi maior impressa est, utrumq; ipsius, uenas & arterias feminariasq; uasa commonstrat. Iungitur itaq; octaua ad paruum  
illam figuram ubi n occurrit, uenæq; femoralis arteria committitur: nexus uerò fiet urinaris tantum meatus, proportionem a uesicæ situ sumpta.



SECUNDA.

QVARTA.

SEPTIMA.



QVINTA.

OCTAVA.

