

M0011265: Form and structure of membrana tympani

Publication/Creation

1950

Persistent URL

<https://wellcomecollection.org/works/w2ctnphb>

License and attribution

Conditions of use: it is possible this item is protected by copyright and/or related rights. You are free to use this item in any way that is permitted by the copyright and related rights legislation that applies to your use. For other uses you need to obtain permission from the rights-holder(s).



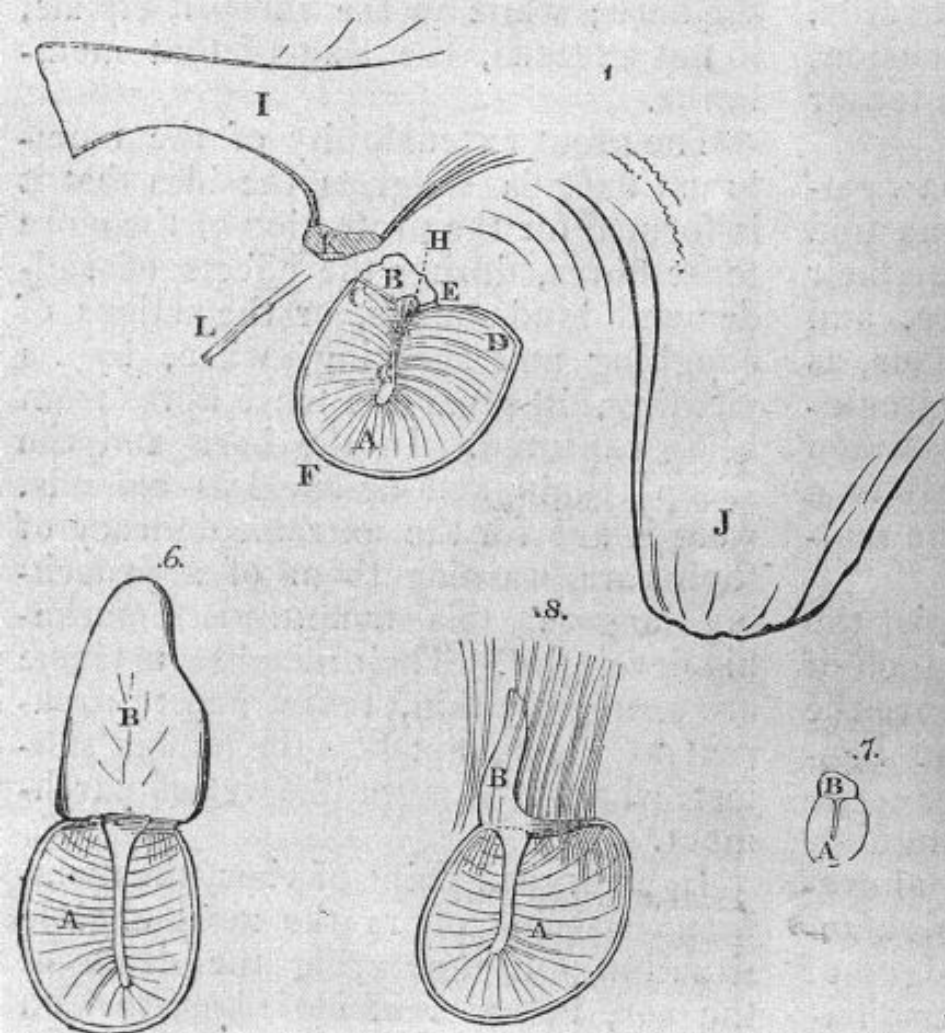
Wellcome Collection
183 Euston Road
London NW1 2BE UK
T +44 (0)20 7611 8722
E library@wellcomecollection.org
<https://wellcomecollection.org>

the membrana tensa, where the play of the malleus has its most extensive movement. The precise situation of the membrana flaccida being well learnt, the instrument should only just pierce the membrane, on account of the situation of the neck of the malleus, which passes upwards immediately behind, and would be liable to be injured by an unskilful hand.

19, Russell-Street, Brixton Road.

Fig. 1.—External view of the membrana tympani, left ear.

- A, In this, and in each figure, the membrana tensa.
- B, In this, and in each figure, the membrana flaccida.
- C, Anterior superior angle.
- D, Posterior angle.
- E, Process between the angles.
- F, Oval circumference, with a second line introduced, to shew the extent of the groove.



- G, External surface of the malleus, to which the membrana tensa is not attached.
- H, Tubercle at the base of the manubrium of the malleus.
- I, Zygomatic process of the temporal bone.
- J, Mastoid process.
- K, Portion of the base of the zygomatic process sawn off.
- L, Situation of the glenoid fissure.

Fig. 2.—Internal view of the membrana tympani, right ear.

- B, Membrana flaccida much developed.
- C, Dotted line, completing an oval figure.
- E, Processus gracilis entering the glenoid fissure.

Fig. 3, Cat; Fig. 4, Rabbit; Fig. 5, Dog; Fig. 6, Sheep; Fig. 7, Rat; Fig. 8, Ox; C, Appearance of muscular fibres in the meatus externus; Fig. 9, Profile of the internal surface of the membrana tympani; C, Manubrium; D, Head; E, Neck; F, Tubercle of the os malleus.

