

## **M0011406: Anatomy of the human eye**

### **Publication/Creation**

April 1950

### **Persistent URL**

<https://wellcomecollection.org/works/bavjrgqe>

### **License and attribution**

This work has been identified as being free of known restrictions under copyright law, including all related and neighbouring rights and is being made available under the Creative Commons, Public Domain Mark.

You can copy, modify, distribute and perform the work, even for commercial purposes, without asking permission.



Wellcome Collection  
183 Euston Road  
London NW1 2BE UK  
T +44 (0)20 7611 8722  
E [library@wellcomecollection.org](mailto:library@wellcomecollection.org)  
<https://wellcomecollection.org>

Table 3. Figure 1. sheweth the Membranes and humors of the eye by lines drawne after the manner of a true eye.

Figure 2. Sheweth the horny coate with a portion of the Optick Nerue.

Figure 3. sheweth the same diuided by a transuerse section.

Figure 4. sheweth the Vaca or Grapy coate with a portion of the Opticke Nerue.

Figure 5. The Grapie coate of a man.

Figure 6. The Horny, Grapie, and the Choroides.

Figure 7. The interior superficies of the Grapie coate.

Figure 8. The Posterior part of the horny coate together with the saide Net separated from the Eye.

Fig. 9. The coat of the vitreous or glassy humor cald *Hyaloides*.

Figure 10. Three humors ioyned together.

Figure 11. The forward part of the Cristalline.

Figure 12. The Cristalline humor covered yet with his Coate.

Figure 13. The Cristalline bared on the sides.

Figure 14. The Cristalline of a man.

Figure 15. His Coate.

Fig. 16. The watery, disposed upon the Cristalline round about.

Fig. 17. The hairy processes beaming lie sprinkled through the foreside of the coate of the glassy humor.

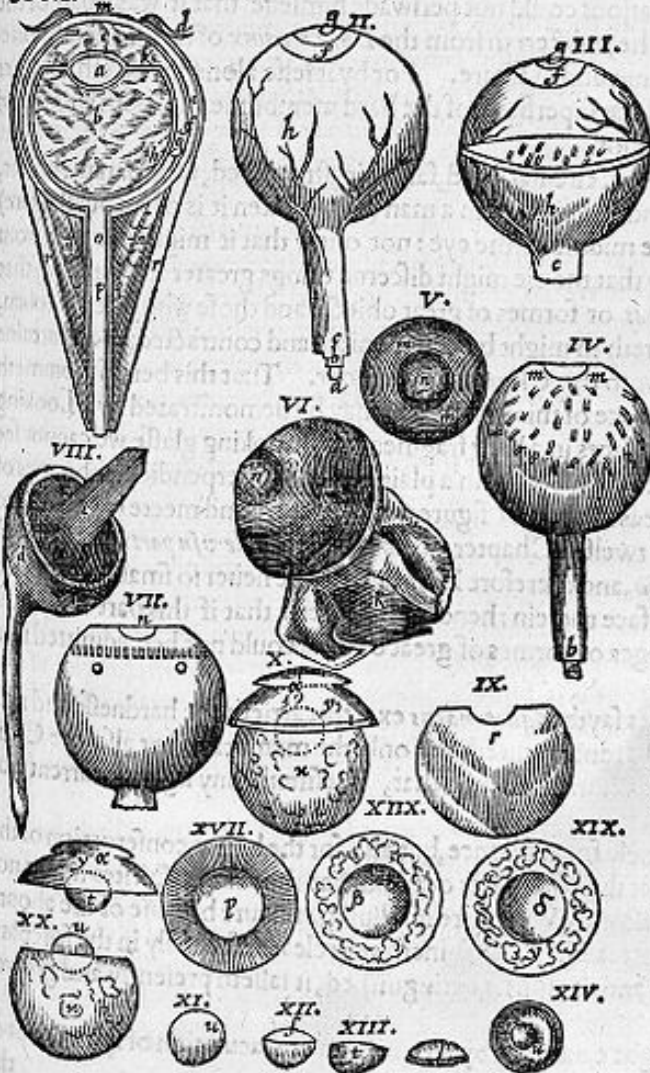
Figure 18. The foreside of the glassy humour.

Figure 19. The place of the watery humour.

Fig. 20. The glassy humour containing or comprehending the Cristalline.

TABVLA. III.

FIG. 1.



The explication of the first Figure by it selfe.

- a. The Cristalline humour.
- b. The Glassy humour.
- c. The watery humour.
- d. The utmost coate called *Adnata*.
- e. the dark part of the horny Tunicle which is not transparent.

- f, the Grapy coate called *Vaca*.
- g, the Net-like coate called *Retiformis*.
- h. the coat of the glassy humor cald *Hyaloides*.
- i, the coat of the Cristalline. (des.)
- kk, the hairy processes cald *Processus ciliares*.
- l, the impression of the Grapy coate where it departeth from the thick coate.
- m, the horny coate, a part of the thick coate.
- nn, the fat betwixt the Muscles,
- o, the Optick Nerue,
- p, the *Dura Meninx*.
- q, the *Pia Mater* or thin *Meninx*.
- rr, The Muscles,

The explication of the other 19. figures together

- a, 2, 4, 8. The Optick Nerue,
- b, 2, 4. The thin *Meninx* clothing the nerue
- c, 2, 3. the thick *meninx* clothing the Nerue.
- d 8, the posterior part of the horny Coate.
- e 8, the coate called *Ret na* gathered together on an heape.

- f, 2, 3, the Raynbow of the eye.
- g, 2, 3, the lesser circle of the eye or the pupilla
- h, 2, 3. Vessels disperfed through the *Dura Meninx*.

- i, 3, 6. the Grapy coate, but i in the 3. Figure sheweth how the vessels doe ioync the hard membrane with the Grapie coate.
- k, 6. the horny or hard membran turnd ouer
- ll, 3, 4. Certaine fibres & strings of vessels, wherby the grapy coat is tied to the horny.
- mm, 4, 5. the impression of the Grapie coate where it recedeth or departeth from the horny coate.

- nn, 4, 5, 6, 7, the pupilla or Apple of the eye.
- oo, 7, The Ciliar or hairy processes.

- p, 7. The beginning of the grapy coate made of a thin membrane dilated, but p in the 17. figure sheweth the Ciliar processes sprinkled through the fore-part of the glassy humour.

- r, 9, the bosom or depression of the glassy humor receiuing the Cristalline. (line
- s, 12, 15, the bredth of the coat of the cristalline.
- t, 12, 13, 14, 16, the posterior part of the cristalline humor which is spherical or round.
- u, 11, 14, 20, the fore-part of the same Cristalline depressed.

- x, 10, 20, the amplitude of the glassy humor
- y, 10, 16, 19, the amplit. of the watry humor
- z, 10, the place where the glassy humour is distinguished from the watry by the interposition of the *Hyaloides* or coate of the glassy humor.

- a, 10, 16, the place where the grapie Coate swimmeth in the watric humour.
- β, 18, The Cavity or depression of the glassy humor which remaineth in the Cristalline is exempted or taken from it.
- α, 19. The cavity or depressio of the watry humor made by the same meanes.