

M0011403: Illustration of the human eye, from Vesalius: De humani corporis fabrica, 1555

Publication/Creation

April 1950

Persistent URL

<https://wellcomecollection.org/works/c92c8ehq>

License and attribution

This work has been identified as being free of known restrictions under copyright law, including all related and neighbouring rights and is being made available under the Creative Commons, Public Domain Mark.

You can copy, modify, distribute and perform the work, even for commercial purposes, without asking permission.



Wellcome Collection
183 Euston Road
London NW1 2BE UK
T +44 (0)20 7611 8722
E library@wellcomecollection.org
<https://wellcomecollection.org>

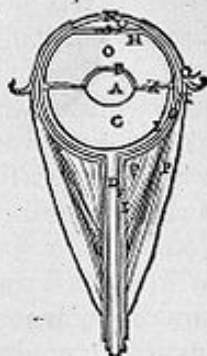


TERTIVM libri quarti Caput describens, ac necessariò propter neruorum seriem, olfactus organi constructionem prosequens, arbitrabar me in præsentia prolixius ueriusq; de olfactus instrumento præcepturum, quàm illo Capite nudam ipsius constructionem enarrans, faciendum duxeram. Verùm quum aliud nihil certius mihi, studiosè admodum odoratus organi naturam inquirenti, hætenus occurrerit, præsens Caput cum illo commune esse uelim. Præter^a duos enim illos neruis non absimiles cerebri processus, qui in^b octauo capitis ossis sinus pertingunt, & frontis ossis^c sinus, & substantiam illis contentam, & duræ cerebri membranæ ac ossium^d foramina, hîc penitus nihil recensere possem. Nolo namque hoc loco de odoribus, & huius sensus medio, & dein temperie, aliquid pertractare: ne meus iste conatus, qui præter opinionem iam excreuit, impensius, atque adedò in immensum crescat.

a 13 fig. C.
D. 13 fig.
L, L.
b 8 fig. cap.
6 lib. 1 A.
B, A.
c 104 fig.
cap. 12 lib.
1 K.
d 13 fig. D.
D & G, G.

DE OCULO, VISVS INSTRUMENTO.

Caput XIII.

PRIMA DECIMIQUARTI
CAPITIS FIGURA.

Hæc figura, earum quæ præsentis Capiti præponuntur prima, alteram oculi partem exprimit, una sectione ab anteriori sede per posteriorem, atq; ita per neruum uisorium diuisi: perinde scilicet, ac si quis diuise secundum longitudinem cepæ alteram partem ea superficie delinearet, quæ alteri parti connata continuâq; fuerat. Atq; hoc etiam modo cælos, & quatuor elementa, in plano depingere solemus.

A Humor crystallinus.

B Tunica anteriori humoris crystallini sedi obducta, tenuissimaq; ceparum pellicula instar pellucida.

C Humor uitreus.

D Nerui uisorijs substantia.

E Tunica, quam reti assimilamus, quamq; resoluta dilatata^a ne uisorijs nerui efficiat substantia.

F Tenuis cerebri membrana portio, quæ neruo obducitur uisorio.

G Uuea tunica, in quam tenuis uisorium neruum induens membrana degenerat, ac expanditur.

H Hac sede uuea tunica in posteriora comprimitur, & corneam illi obductam non contingit tunicam.

I Pupilla, seu foramen, quo uuea est peruisa.

K Tunica ab uuea initium ducens, & cilijs seu palpebrarum pilis imagine correspondens, ac interstitium pariter uitrei humoris ab aqueo.

Dura