

M0011314: Edward the Confessor touching for the King's Evil (scrofula)

Publication/Creation

1950

Persistent URL

<https://wellcomecollection.org/works/mj3rgbme>

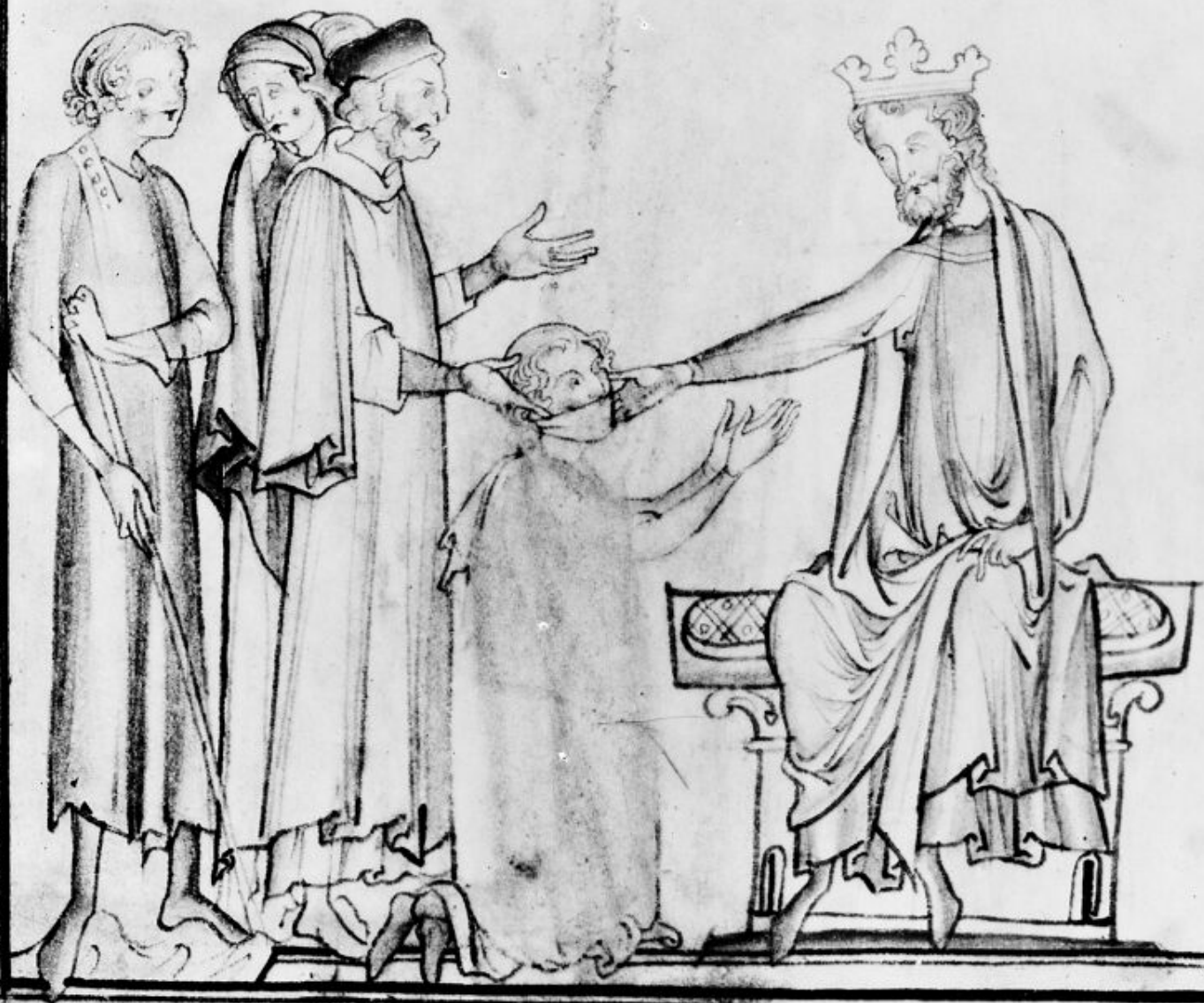
License and attribution

This work has been identified as being free of known restrictions under copyright law, including all related and neighbouring rights and is being made available under the Creative Commons, Public Domain Mark.

You can copy, modify, distribute and perform the work, even for commercial purposes, without asking permission.



Wellcome Collection
183 Euston Road
London NW1 2BE UK
T +44 (0)20 7611 8722
E library@wellcomecollection.org
<https://wellcomecollection.org>



p ar l'unges languir e entēdie. ne feme iofne e bele
 a s'untres uout ia ke despēdie s'uz la goue out escronele
 s'adeut lucurs ia de mortel e pout arier gareisin
 f'ors s'ulement de deu du celp. ar art dūme s'iden nun
 s'urrir desire. mais ne puet. k'e p'urrir li fait la buche
 p'ar murrir. kar deus uel uent. li rois la garist. pilatuche