

M0011404: Illustration of the human eye, from Vesalius: De humani corporis fabrica, 1555

Publication/Creation

April 1950

Persistent URL

<https://wellcomecollection.org/works/hqrmmuht>

License and attribution

This work has been identified as being free of known restrictions under copyright law, including all related and neighbouring rights and is being made available under the Creative Commons, Public Domain Mark.

You can copy, modify, distribute and perform the work, even for commercial purposes, without asking permission.



Wellcome Collection
183 Euston Road
London NW1 2BE UK
T +44 (0)20 7611 8722
E library@wellcomecollection.org
<https://wellcomecollection.org>

- L Dura cerebri membrana portio, nervum visorium obvolvens.
M Dura oculi tunica, quam dura cerebri membrana constituit.
N Dura oculi tunica pars, quæ cornu instar pellucida visitur.
O, O Humor aqueus.
P, P Musculi oculum moventes.
Q Adhærens, alba ne oculi tunica.

SECUNDA. III.

IIII.

V.

VI.



VII.

VIII.

IX.

X.

XI.

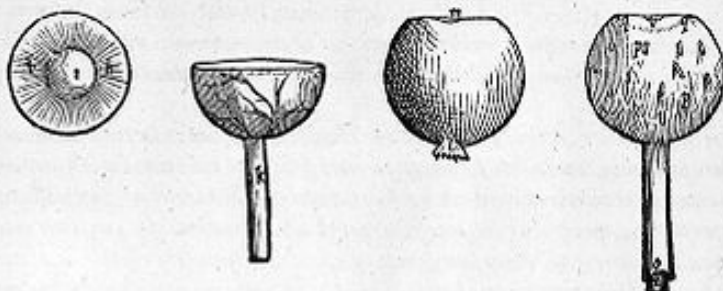


XII.

XIII.

XIII.

XV.

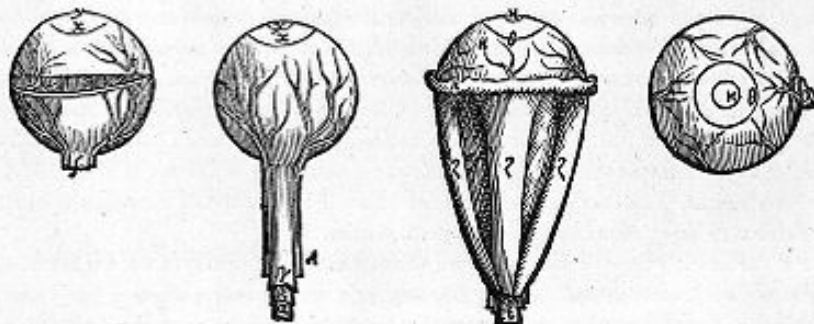


XVI.

XVII.

XVIII.

XIX.



DECEM ET OCTO FIGURARVM HIC SERIATIM
primam subsequens, & earundem characterum Index.

SECUNDA figura crystallinum duntaxat humorem anteriori sede ita exprimit, atq; is omnibus illum
ambientibus partibus liberatus, è directo intuenti occurreret.

TERCIA figura nudum prorsus crystallinum humorem commonstrat, ea sede se ostendentem, qua ex
R. latere ab aliquo spectaretur. Verum R. asperitatem sedemq; notat, cui oculi tunica, palpebrarum pilos referēs,
humori crystallino connascitur.

22 2 QVARTA