

## **M0009563: Wellcome Historical Medical Library: steel stacks, north end**

### **Publication/Creation**

09 August 1946

### **Persistent URL**

<https://wellcomecollection.org/works/rhyndagq>

### **License and attribution**

You have permission to make copies of this work under a Creative Commons, Attribution license.

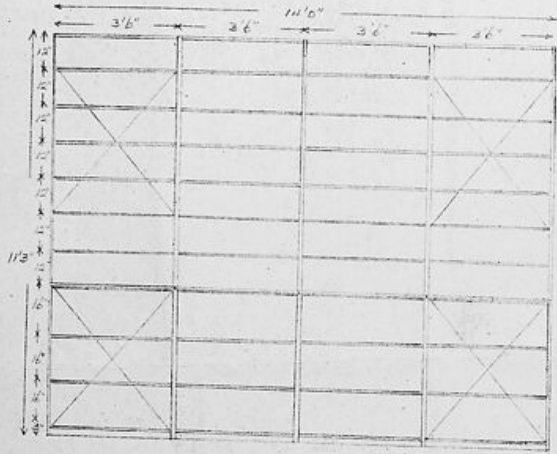
This licence permits unrestricted use, distribution, and reproduction in any medium, provided the original author and source are credited. See the Legal Code for further information.

Image source should be attributed as specified in the full catalogue record. If no source is given the image should be attributed to Wellcome Collection.



Wellcome Collection  
183 Euston Road  
London NW1 2BE UK  
T +44 (0)20 7611 8722  
E [library@wellcomecollection.org](mailto:library@wellcomecollection.org)  
<https://wellcomecollection.org>

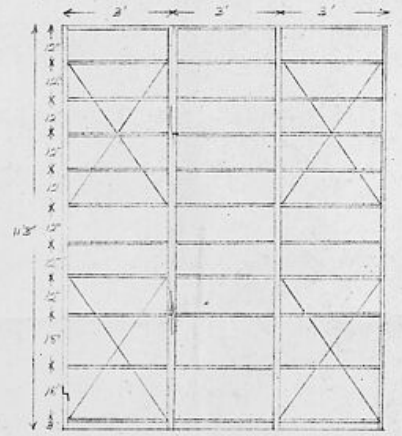
D



STACK 1



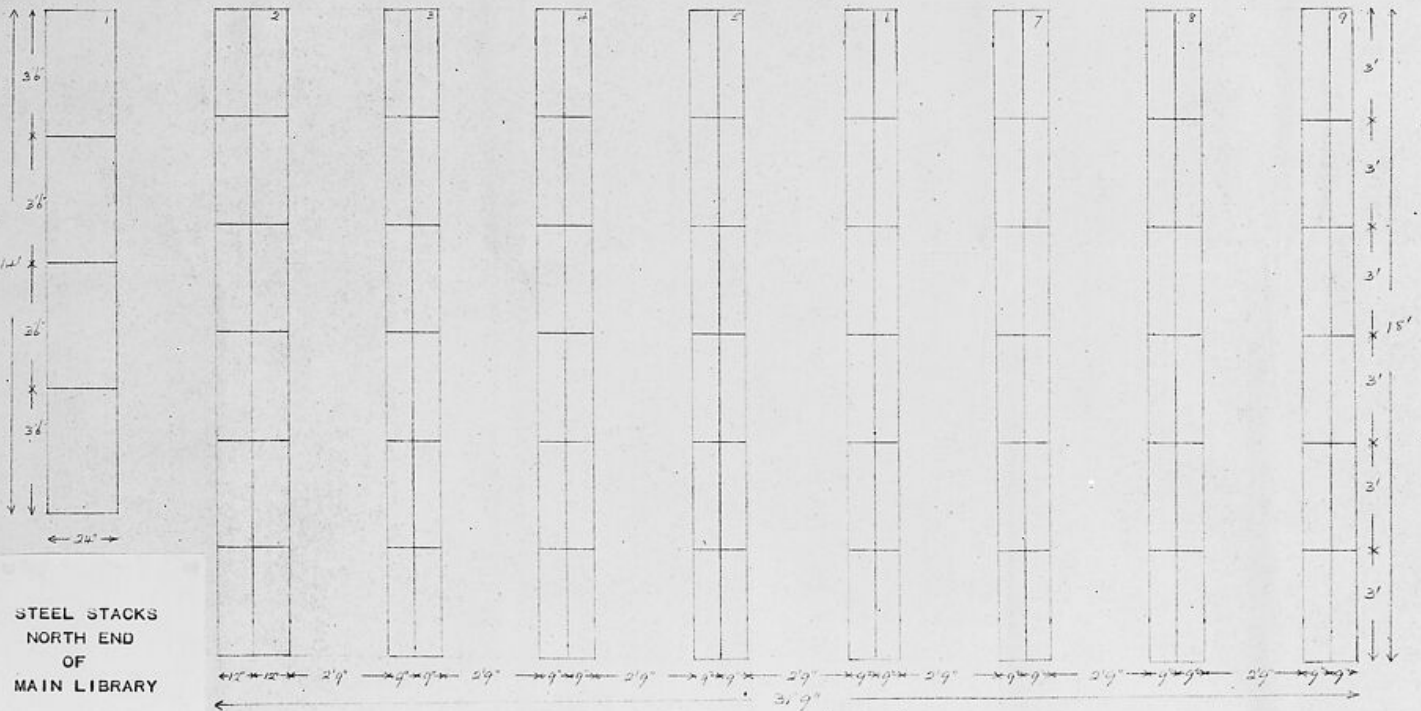
SIDE ELEVATION



TYPICAL OF STACKS 2 TO 9

DOUBLE FACED 9' DEEP EACH FACE

ALL STACKS FITTED WITH SHEET STEEL DOUBLE PANEL PLATES, COVER CARROLLS, FLUSH BARS & REAR BRACING.



STEEL STACKS  
NORTH END  
OF  
MAIN LIBRARY

FLOOR PLAN B

WALLACE HISTORICAL MASON MUSEUM