

**M0010279: Plan of back to back cottages with cesspool between them,  
Preston, England**

**Publication/Creation**

21 October 1947

**Persistent URL**

<https://wellcomecollection.org/works/rxdyydqr>

**License and attribution**

This work has been identified as being free of known restrictions under copyright law, including all related and neighbouring rights and is being made available under the Creative Commons, Public Domain Mark.

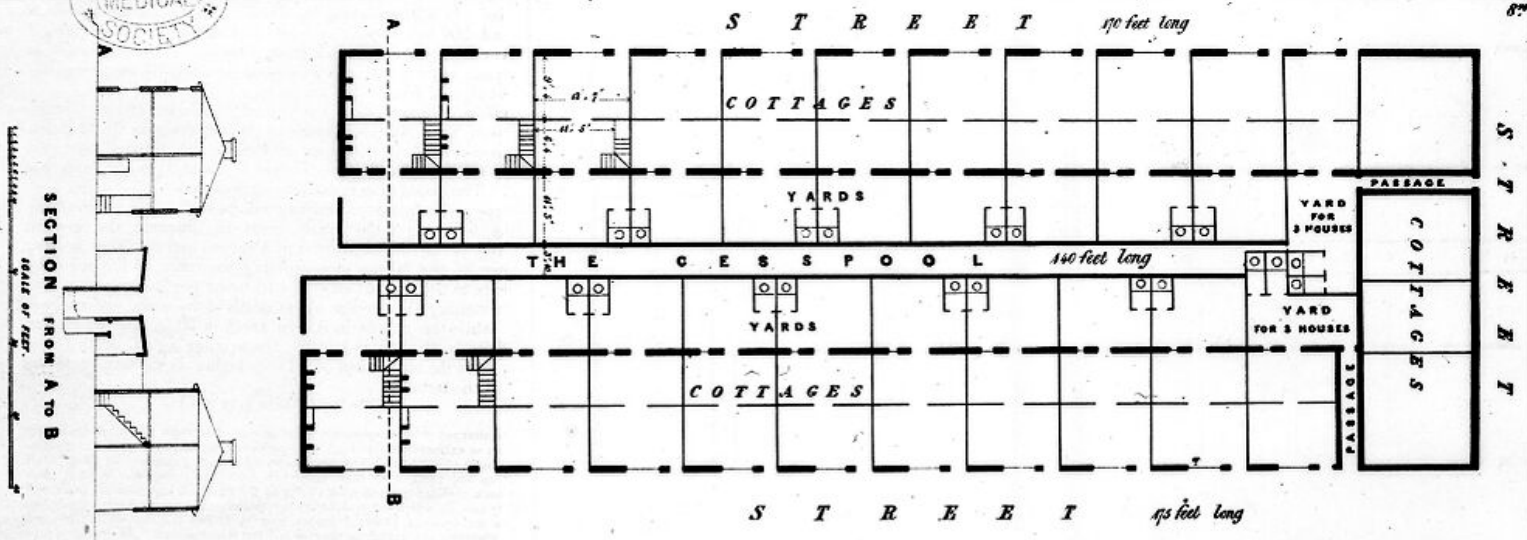
You can copy, modify, distribute and perform the work, even for commercial purposes, without asking permission.



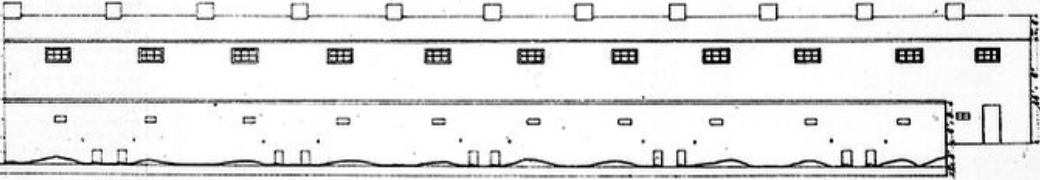
Wellcome Collection  
183 Euston Road  
London NW1 2BE UK  
T +44 (0)20 7611 8722  
E [library@wellcomecollection.org](mailto:library@wellcomecollection.org)  
<https://wellcomecollection.org>



SECTION FROM A TO B  
SCALE OF FEET



Ridge of the Roof  
Spout  
Windows which can't be opened  
Coping of Cesspool Wall  
Holes for Ashes  
Level of Yards, shown by the mouths of drains  
Holes from Privies  
Height of Walls  
Sloping bottom



BACK ELEVATION FROM THE CENTRE OF CESSPOOL.

**DESCRIPTION.** Between the Back Yards of the two rows of Cottages, a Cesspool extends the whole length of the Street, which receives the Contents of the Privies & Drains, & the Ashes & refuse of the whole Block; At the time of our visit planks were floating in the liquid Alch. The Yards are surrounded by Walls 6 1/2 feet high; there is no access to 18 of them, except through the back doors of the Houses; into these square wells the openings from the Privies act as chimneys from the Cesspool, & the foul air so rising into them has no means of escape, except over or through the Cottages on each side, or at the end of the Street which is not closed by Buildings. Several of the Yards have the additional odour of a Pigsty and its dung heap. A door to each Privy would be an advantage, but they are nearly all removed, as unfortunately they just fit recesses in the back rooms, and are more useful as tables than doors. The Contents of the Cesspool belong to the Landler, and are taken out twice in a year. The heap of one emptying had lain for several months within 5 Yards of the end of the Cottages and 2 other heaps were at a short distance. From the appearance of the adjoining Land this street will probably be extended to nearly double its present length. Three other neighbouring Blocks of Cottages are built in a similar plan; the Cesspool of one of them is about 166 Yards long, and the other two about 96 Yards each.

PLAN OF COTTAGES REFERRED TO IN THE REPORT ON PRESTON - BY THE REV. J. CLAY.