

M0009562: Wellcome Historical Medical Library: card cabinet and reading room furniture

Publication/Creation

09 August 1946

Persistent URL

<https://wellcomecollection.org/works/d5zjcbt4>

License and attribution

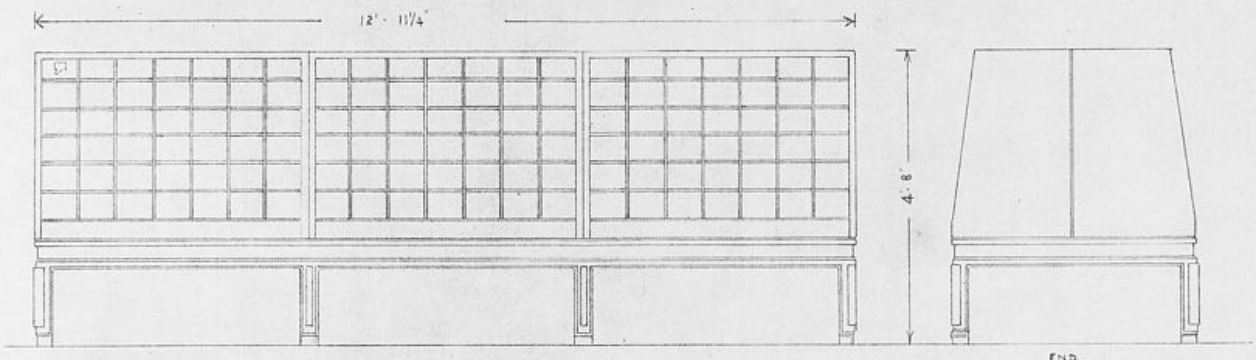
You have permission to make copies of this work under a Creative Commons, Attribution license.

This licence permits unrestricted use, distribution, and reproduction in any medium, provided the original author and source are credited. See the Legal Code for further information.

Image source should be attributed as specified in the full catalogue record. If no source is given the image should be attributed to Wellcome Collection.

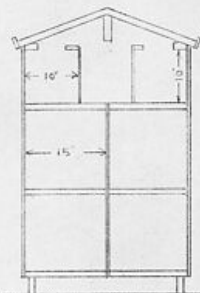


Wellcome Collection
183 Euston Road
London NW1 2BE UK
T +44 (0)20 7611 8722
E library@wellcomecollection.org
<https://wellcomecollection.org>

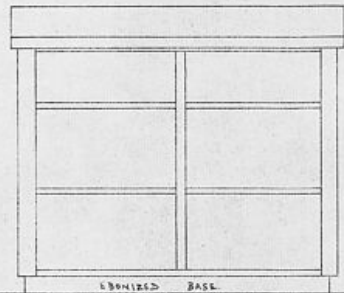


CARD INDEX CABINET
252 TRAYS FOR 4x6 CARDS

END

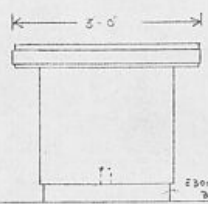
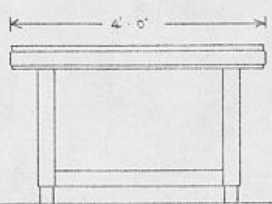


SECTION



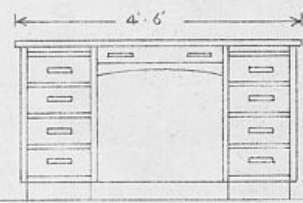
EBONIZED BASE

FOLIO CASE

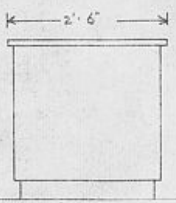


EBONIZED BASE

STUDY TABLES



DESK



END

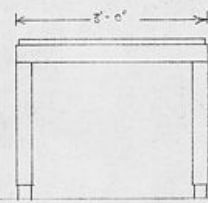
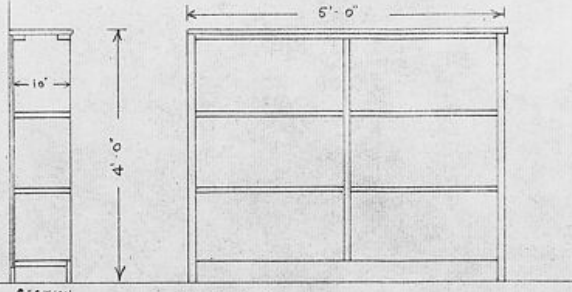


TABLE 3'-0" x 2'-0"

SILENCE ROOMS

TABLE 5'-0" x 2'-0"



SECTION

BOOK CASE
SILENCE ROOMS

SCALE 1/4" = 1'-0"

CARD CABINET
AND
FURNITURE READING
ROOM

LIBRACO LTD
LOMBARD WALL
CHARLTON
LONDON S.E.7