

**M0010430: Valves in veins, 1585**

**Publication/Creation**

19 February 1948

**Persistent URL**

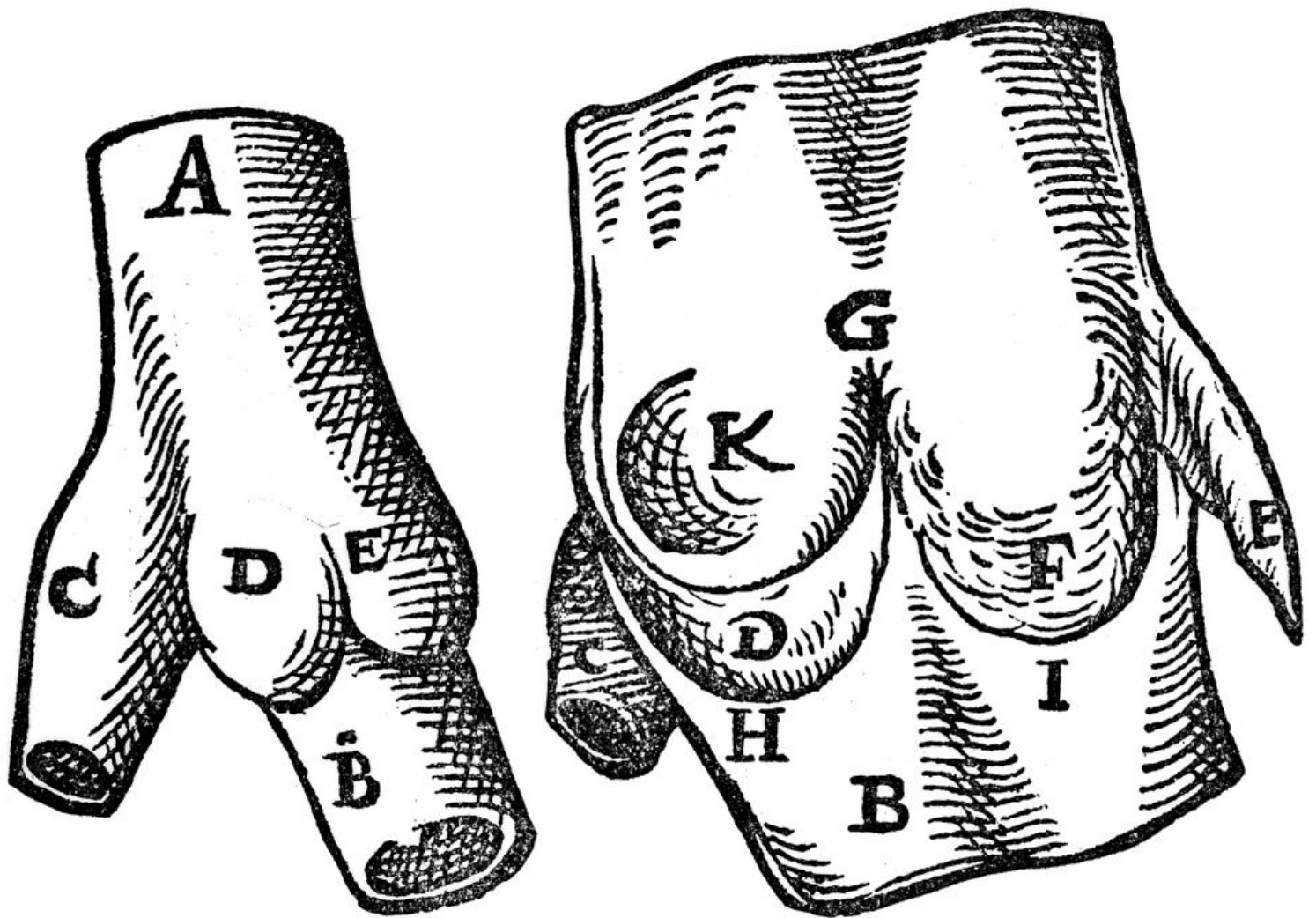
<https://wellcomecollection.org/works/snuub6fq>

**License and attribution**

Conditions of use: it is possible this item is protected by copyright and/or related rights. You are free to use this item in any way that is permitted by the copyright and related rights legislation that applies to your use. For other uses you need to obtain permission from the rights-holder(s).

**wellcome  
collection**

Wellcome Collection  
183 Euston Road  
London NW1 2BE UK  
T +44 (0)20 7611 8722  
E [library@wellcomecollection.org](mailto:library@wellcomecollection.org)  
<https://wellcomecollection.org>



FIGURES 2 AND 3.—From Salomon Alberti, *De Valvulis* etc., 1585. Figure 1 shows the outside of part of a leg-vein, *AB*, which receives a tributary vein, *C*, from a muscle. *DE* are the valve sinuses. Figure 2 is of the same vein slit up longitudinally to show the internal arrangement. *ABC* are as in Figure 1. *D* is one cusp of the bicuspid valve. *F* is the site from which the second cusp, *E*, has been partly cut away and reflected. *G* is the cornu formed by the junction of the two cusps. *K* is the recess at the entry of the tributary vein *C*. These two figures are the first drawings of a venous valve, and are quite remarkably typical of such structures.