

Record of prisoners' weights

Publication/Creation

Oct 1943-Dec 1944

Persistent URL

<https://wellcomecollection.org/works/vba6gqfs>

License and attribution

You have permission to make copies of this work under a Creative Commons, Attribution, Non-commercial license.

Non-commercial use includes private study, academic research, teaching, and other activities that are not primarily intended for, or directed towards, commercial advantage or private monetary compensation. See the Legal Code for further information.

Image source should be attributed as specified in the full catalogue record. If no source is given the image should be attributed to Wellcome Collection.



Wellcome Collection
183 Euston Road
London NW1 2BE UK
T +44 (0)20 7611 8722
E library@wellcomecollection.org
<https://wellcomecollection.org>

RAMC 1280/3
VOL. 1

NOTE BOOK

WEIGHTS

COMMENCED OCTOBER 1943.

(ノート A5)

67
22

134

114

74

WEIGHT IN KILO'S.

P.O.W. No.	OCTOBER 1943.	NOVEMBER 1943	DECEMBER 1943.	JANUARY 1944	FEBRUARY 1944	MARCH 1944	APRIL 1944	MAY 1944
1	55.5	57.5	57.0	54.0	53.0	54.5	55.0	55.2
2	56.5	60.0	60.0	60.0	58.5	59.0	57.0	60.0
3	48.0	49.5	53.0	52.5	52.0	52.0	51.0	54.0
5	54.5	57.5	58.0	56.5	56.5	57.0	56.0	55.5
6	51.0	52.0	53.5	53.5	52.0	53.5	53.0	54.0
9	55.5	—	—	—	—	—	—	—
11	51.0	—	—	—	—	—	—	—
13	53.0	52.5	54.5	54.0	53.0	55.0	54.0	57.5
14	53.0	49.5	60.0	57.5	54.5	58.0	X	—
15	53.0	—	—	—	—	—	—	—
17	50.0	48.5	51.5	53.0	51.5	49.5	57.0	55.0
18	55.0	55.0	DEAD	—	—	—	—	—
20	55.5	59.5	63.0	62.0	64.5	68.0	X	—
22	55.5	54.0	54.5	54.0	51.0	51.5	51.0	50.2
26	61.5	63.0	66.5	67.0	65.0	65.0	64.0	65.7
30	58.0	59.0	62.0	58.0	57.0	58.5	56.0	58.2
31	54.0	53.0	55.5	54.0	53.0	54.5	53.5	53.0
32	53.0	55.5	58.0	56.0	56.0	56.0	54.0	57.7
34	52.5	—	—	—	—	—	—	—
36	52.0	52.5	54.0	52.5	54.0	52.5	51.5	53.0
37	56.5	—	—	—	—	—	—	—
43	51.0	52.0	51.0	53.5	52.0	54.0	52.5	57.0
44	71.0	73.0	74.5	75.0	73	78.0	75.0	75.5
45	52.5	54.0	53.0	54.5	54.0	55.0	X	—
46	48.6	—	—	—	—	—	—	—
						834.5		858.5

WEIGHT IN KIKO'S.

P.O.W. No.	OCTOBER 1943.	NOVEMBER 1943.	DECEMBER 1943.	JANUARY 1944.	FEBRUARY 1944.	MARCH 1944.	APRIL 1944.	MAY 1944.	JUNE 1944.
47	50.0	—	—	—	—	—	—	—	—
51	51.0	51.5	55.0	53.0	50.5	51.5	51.0	54.2	—
52	58.5	58.5	62.0	62.0	59.0	59.0	57.0	61.0	—
53	57.5	58.5	60.5	62.0	60.0	59.0	60.0	58.0	—
54	49.5	—	—	—	—	—	—	—	—
55	57.5	—	—	—	—	—	—	—	—
56	54.0	52.5	56.0	55.0	56.0	54.0	53.5	55.0	—
57	48.0	—	—	—	—	—	—	—	—
60	62.5	61.5	64.0	61.0	58.0	58.0	56.5	56.0	—
61	57.5	60.0	62.5	60.5	62.0	62.0	65.0	67.0	—
62	52.5	—	—	—	—	—	—	—	—
63	62.0	60.0	58.0	62	64	DUTY	64.	65.0	—
64	59.0	60.0	62.0	59.0	56.5	57.0	56.	57.0	—
65	52.5	—	—	—	—	—	—	—	—
66	58.0	—	—	—	—	—	—	—	—
68	52.0	61.0	58.0	58.0	61.0	68.0	64.5	65.0	—
69	54.5	53.5	57.5	56.0	55.0	56.0	55.5	59.0	—
75	51.5	—	—	—	—	—	—	—	—
76	53.5	53.0	55.5	53.5	52.0	54.5	53.5	56.2	—
77	60.0	—	—	—	—	—	—	—	—
78	48.0	—	—	—	—	—	—	—	—
79	42.0	46.0	47.0	46.0	46.0	44.5	45.0	144	—
80	56.5	54.5	58.5	61.5	59.0	63.5	62.5	65.3	—
81	49.0	50.0	53.5	51.5	49.5	53.5	49.5	50.0	—
82	63.5	67.5	68.0	67.0	61.5	144	144	144	—
							1628.0	768.2	—

WEIGHT IN KIKO'S.

[illegible]

WEIGHT IN KILO'S.

[illegible]

WEIGHT IN KILOS

[illegible]

WEIGHT IN KILO'S

P.Q.W. NO.	OCTOBER 1943.	NOVEMBER 1943.	DECEMBER 1943.	JANUARY 1944.	FEBRUARY 1944.	MARCH 1944.	APRIL 1944.	MAY 1944.	JUNE 1944.
201	50.5	52.0	56.0	56.0	54.0	53.0	X	—	
202	62.0	65.0	64.0	66.0	69.0	67.0	68.0	68.5	
203	61.5	61.0	65.5	63.5	63.5	65.0	66.5	67.5	
204	44.5	41.0	44.5	40.5	38.5	40.5	X	—	
205	54.0	—	—	—	—	—	—	—	
206	58.0	61.5	63.0	60.0	61.5	65.0	63.5	65.7	
208	52.5	52.5	51.5	53.5	53.5	54.5	55.5	54.0	
209	52.0	49.5	51.5	51.5	50.0	51.5	X	—	
212	55.5	56.0	59.0	57.0	58.0	57.5	58.0	60.0	
213	42.5	—	—	—	—	—	—	—	
214	50.5	—	—	—	—	—	—	—	
215	51.0	52.5	56.0	54.5	55.0	56.0	55.0	56.0	
216	46.5	47.0	49.0	48.0	49.0	47.0	48.0	49.0	
217	54.0	54.5	60.0	56.5	MOJO	60.0	56.0	60.0	
219	50.0	—	—	—	—	—	—	—	
220	50.0	52.5	53.0	51.5	49.5	49.0	49.0	54.7	
222	50.5	54.5	55.5	51.5	49.0	51.0	50.0	50.5	
223	52.0	—	—	—	—	—	—	—	
224	49.5	52.0	50.5	48.5	48.0	48.0	47.0	49.2	
225	44.5	45.0	48.5	46.0	46.0	46.0	45.5	46.8	
226	53.5	55.5	54.5	59.0	55.5	55.5	54.5	55.0	
227	50.5	50.5	54.0	53.0	53.5	52.5	56.0	55.5	
228	53.0	—	—	—	—	—	—	—	
229	48.5	51.0	51.5	50.0	49.0	49.5	53.0	57.5	
231	52.0	—	—	—	—	—	—	—	

53150

84520

WEIGHT IN KILO'S.

R.O.W. No.	OCTOBER 1943	NOVEMBER 1943	DECEMBER 1943	JANUARY 1944	FEBRUARY 1944	MARCH 1944	APRIL 1944	MAY 1944	JUNE 1944
232	51.5	52.0	54.5	51.0	52.5	51.0	49.5	54.0	
233	46.0	48.5	51.5	50.0	49.0	49.5	49.0	51.0	
236	51.5	53.0	55.0	55.0	56.0	58.0	58.0	60.0	
237	65.0	—	—	—	—	—	—	—	
238	62.0	—	—	—	—	—	—	—	
239	47.0	46.5	47.5	49.0	47.5	48.0	46.5	46.8	
240	55.0	—	—	—	—	—	—	—	
241	62.5	63.0	65.0	62.0	65.0	62.5	X	—	
242	66.0	66.0	71.0	69.0	76.5	86.0	82.0	79.5	
243	60.0	—	—	—	—	—	—	—	
245	57.0	60.0	64.5	68.0	68.0	68.0	66.0	62.5	
246	52.5	—	—	—	—	—	—	—	
247	72.0	74.0	74.0	75.0	72.5	74.0	76.5	76.8	
248	56.5	—	—	—	—	—	—	—	
250	49.5	51.0	54.0	54.0	52.0	53.0	53.0	55.2	
252	59.5	57.5	63.0	68.5	66.5	63.5	60.0	65.5	
253	52.0	51.5	56.5	54.5	54.0	54.5	57.0	60.0	
255	50.0	49.5	53.5	54.0	53.0	54.5	53.5	54.0	
259	58.0	—	—	—	—	—	—	—	
260	54.0	54.5	57.5	56.5	55.0	56.0	55.0	56.0	
261	45.5	—	—	—	—	—	—	—	
262	50.0	52.0	54.0	53.0 58.0	53.5	53.0	52.5	52.5	
263	47.0	—	—	—	—	—	—	—	
266	56.0	58.5	61.5	59.0	59.0	59.0	58.5	59.0	
268	48.0	50.5	55.0	52.5	51.0	52.5	51.0	54.0	
							6183.0	806.30	

ROW No	OCTOBER 1943	NOVEMBER 1943	DECEMBER 1943	JANUARY 1944	FEBRUARY 1944	MARCH 1944	APRIL 1944	MAY 1944	JUNE 1944
269	53.0	52.5	53.0	54.5	54.5	57.0	55.5	57.0	
270	52.5	54.5	58.5	57.0	57.0	61.0	57.0	59.8	
271	48.5	50.0	54.0	51.5	51.0	51.5	X	-	
273	65.5	65.0	66.5	65.5	66.5	68.0	X	-	
274	53.0	53.5	55.5	55.0	53.5	55.0	54.0	61.2	
276	48.5	50.0	53.5	57.0	52.0	52.0	52.5	55.2	
277	52.0	55.0	59	56.5	57.0	57.5	56.0	57.5	
278	53.0	54.5	57.0	64.5	52.5	MOTO	53.5	57.0	
280	60.0	59.5	63.5	62.0	60.0	63.0	64.0	69.0	
281	51.5	53.0	55.5	53.0	51.5	53.0	52.0	55.5	
282	45.0	—	—	—	—	—	—	—	
283	48.0	—	—	—	—	—	—	—	
284	49.5	51.5	59.5	53.0	52.0	51.0	50.5	53.5	
285	57.0	56.0	57.0	58.0	57.0	55.0	56.0	58.5	
286	50.0	51.0	52.0	49.0	49.0	47.0	47.5	49.7	
287	56.0	57.5	60.5	59.0	60.0	59.0	58.5	61.0	
288	58.5	58.5	62.0	61.5	61.5	63.5	61.5	61.5	
290	53.0	53.0	55.0	53.5	53.5	53.5	54.5	56.7	
290	62.5	65.0	67.5	65.5	64.0	67.0	65.5	70.5	
291	52.0	51.0	54.0	53.5	53.5	53.5	52.0	53.2	
292	48.5	51.0	55.0	55.0	54.0	54.0	53.5	54.5	
293	42.0	43.5	43.5	43.0	43.0	44.0	42.5	45.5	
294	50.0	50.5	54.5	53.0	52.0	52.0	51.5	53.0	
295	50.0	48.5	53.0	50.0	50.5	51.5	50.5	51.2	
297	50.5	51.5	54.0	52.0	51.0	51.5	50.5	54.2	
							7322.0	1195.20	

7322'o

WEIGHT IN KILOS

ROW NO.	OCTOBER 1943	NOVEMBER 1943	DECEMBER 1943	JANUARY 1944	FEBRUARY 1944	MARCH 1944	APRIL 1944	MAY 1944	JUNE 1944
298	58.0	59.0	57.0	59.5	60.5	60.0	61.5	61.5	
299	45.5	47.0	52.0	49.0	52.5	52.0	52.0	57.0	
300	44.0	45.5	50.0	47.0	46.5	47.5	46.5	47.5	
303	62.5	61.0	64.5	65.0	64.5	66.5	65.5	69.0	
304	45.0	46.0	48.0	47.5	44.5	49.5	X	—	
305	55.5	—	—	—	—	—	—	—	
306	49.5	52.0	53.5	52.5	51.5	51.5	52.0	55.0	
307	62.5	64.5	65.5	63.5	63.0	62.5	62.0	65.0	
308	55.0	—	—	—	—	—	—	—	
309	49.0	51.5	56.0	54.0	54.0	53.0	53.0	53.5	
311	60.0	60.0	62	61.5	61.0	63.0	62.0	65.0	
312	86.5	86.0	88.5	87.5	82.0	80.0	88.0	87.5	
313	57.0	57.5	58.0	59.0	57.5	59.0	59.0	60.0	
314	50.5	51.5	56.0	53.0	54.0	54.5	55.0	55.0	
315	50.0	51.0	54.0	51.0	49.5	52.0	51.0	54.7	
316	59.5	62.5	64.5	66.5	69.0	70.5	71.5	72.0	
317	49.5	—	—	—	—	—	—	—	
318	45.0	—	—	—	—	—	—	—	
319	56.5	55.0	54.0	58.0	57.0	59.0	57.5	62.4	
320	70.5	67.0	69.0	68.0	68.0	66.0	66.5	69.0	
322	60.0	—	—	—	—	—	—	—	
323	55.5	—	—	—	—	—	—	—	
324	53.5	54.0	55.0	53.5	54.0	54.5	53.0	59.3	
325	53.5	54.5	58.5	56.5	56.0	58.5	58.0	63.0	
327	50.0	—	—	—	—	—	—	—	
							8336.0	1050.40	

WEIGHT IN KILO'S

[illegible]

WEIGHT IN KILO'S

ROW NO	OCTOBER 1943	NOVEMBER 1943	DECEMBER 1943	JANUARY 1944	FEBRUARY 1944	MARCH 1944	APRIL 1944	MAY 1944	JUNE 1944
359	55.0	54.0	59.0	56.5	53.0	54.0	57.0	64.0	
360	47.5	53.5	56.0	56.0	51.0	51.0	X	-	
363	45.0	46.5	47.0	47.0	45.0	47.5	47.5	46.0	
365	56.0	58.0	61.0	58.0	56.5	57.5	57.5	60.2	
367	48.0	50.0	52.0	50.5	49.0	52.0	51.0	52.3	
368	53.0	56.5	60.5	59.0	55.0	57.0	57.5	60.0	
370	47.0	48.0	50.0	50.5	48.0	54.0	54.5	53.5	
371	64.0	65.0	69.0	66.5	66.0	67.0	66.0	62.7	
372	50.5	54.0	55.5	53.5	54.0	60.0	60.0	65.5	
373	54.5	—	—	—	—	—	—	—	
375	50.5	52.5	54.0	53.5	52.5	52.5	X	-	
376	48.0	51.0	54.0	52.0	49.5	51.0	54.5	52.3	
377	50.0	48.5	50.5	48.0	50.0	53.0	48.0	51.0	
379	61.5	62.0	63.5	65.0	64.0	63.0	64.5	67.3	
381	54.0	54.5	58.5	55.5	57.0	59.0	60.0	59.2	
382	54.5	56.0	59.5	59.0	57.5	57.0	56.0	57.7	
383	52.5	50.5	54.5	52.5	52.0	52.0	52.5	53.2	
385	55.0	—	—	—	—	—	—	—	
386	53.0	55.0	55.0	56.0	57.0	60.0	58.5	60.0	
387	55.0	56.5	62.5	58.5	57.0	56.5	55.5	58.5	
388	52.0	54.0	58.0	56.0	54.0	56.0	54.5	54.9	
393	48.5	—	—	—	—	—	—	—	
394	55.0	60.0	66.0	67.5	62.0	62.5	X	-	
395	59.5	60.0	57.5	57.0	57.5	59.5	57.0	58.2	
396	53.5	—	—	—	—	—	—	—	

10335.5 1036.50

[illegible]

[illegible]

P.O.N. No.	WEIGHT IN KILOS								
	OCTOBER 1943	NOVEMBER 1943	DECEMBER 1943	JANUARY 1944	FEBRUARY 1944	MARCH 1944	APRIL 1944	MAY 1944	JUNE 1944
472	50.0	49.0	50.0	51.5	50.0	51.5	50.0	53.0	
473	52.0	—	—	—	—	—	—	—	
474	50.5	53.5	57.0	54.5	53.5	54.0	54.5	57.5	
475	42.0	44.0	DEAD	—	—	—	—	—	
477	53.0	55.0	54.5	55.0	53.5	56.0	54.0	62.5	
478	57.0	57.0	60.0	62.0	59.0	62.0	59.0	65.5	
481	46.0	47.5	50.0	47.0	47.0	49.0	47.0	49.5	
482	58.0	56.5	58.0	58.0	58.0	60.5	X	—	
483	46.0	45.0	45	46.0	46.5	46.0	46.0	48.0	
484	67.0	70	72.5	72.0	74.0	75.0	74.0	75.0	
485	51.0	50.0	54.0	52.0	50.0	53.5	52.0	53.0	
486	53.5	55.0	56.0	53.5	53.0	58.5	53.5	56.0	
487	44.0	43.5	46.0	42.5	41.0	43.5	42.5	47.0	
488	56.0	54.5	58.0	60.0	59.0	55.0	60.0	59.9	
489	64.0	65.0	66.0	67.0	67.5	70.5	69.5	70.5	
490	55.5	54.5	60.0	63.0	63.5	66.0	X	—	
491	53.5	54.0	57.5	55.0	55.0	56.0	56.5	58.0	
492	55.0	55.5	59.0	58.0	57.0	55.5	57.0	58.5	
493	49.5	—	—	—	—	—	—	—	
494	58.5	59.0	61.5	60.0	60.0	59.0	60.0	60.5	
495	51.5	51.0	50.5	49.5	50.5	49.0	50.0	51.0	
497	54.0	55.5	56.0	55.0	55.0	55.0	53.5	56.5	
499	51.5	45.0	DEAD	—	—	—	—	—	
500	60.0	64.5	69.0	69.0	69.0	69.0	X	—	
501	46.0	50.0	50.5	48.0	48.0	47.5	49.0	51.5	

13049.0 1033.40

WEIGHT IN KILOS.

R.O.W. NO.	OCTOBER 1943	NOVEMBER 1943	DECEMBER 1943	JANUARY 1944	FEBRUARY 1944	MARCH 1944	APRIL 1944	MAY 1944	JUNE 1944
502	49.5	—	—	—	—	—	—	—	—
503	51.0	—	—	—	—	—	—	—	—
504	50.5	49.5	51.5	50.0	49.0	48.5	50.0	47.0	—
505	52.0	53.0	53.0	55.0	53.5	56.0	56.5	57.0	—
508	52.0	55.5	59.0	57.5	57.0	61.0	60.0	60.5	—
510	56.0	60.0	62.5	61.5	61.0	63.0	60.0	60.0	—
511	52.0	52.5	54.5	54.0	56.0	56.5	56.5	61.3	—
512	52.0	51.5	54.0	53.0	52.0	53.5	52.0	53.8	—
513	64.5	64.0	66.5	67.0	63.5	66.5	X	—	—
516	59.0	58.0	60.0	59.0	57.5	59.0	61.5	63.5	—
517	50.0	50.0	53.0	53.0	51.0	52.0	50.5	51.2	—
518	52.0	52.0	52.0	52.5	53.0	52.5	53.0	55.5	—
519	51.0	54.5	58.0	58.0	60.0	58.0	63.0	67.0	—
520	50.0	52.0	51.5	52.5	50.0	51.0	51.0	52.0	—
521	54.5	57.0	56.0	55.0	54.0	56.5	55.0	57.0	—
524	58.5	64.0	65.0	62.5	60.0	60.0	56.5	58.0	—
525	52.0	54.0	57.5	56.0	54.5	56.0	55.0	56.0	—
526	56.5	—	—	—	—	—	—	—	—
527	46.0	48.5	49.0	50.5	52.0	54.5	52.5	55.5	—
528	55.0	—	—	—	—	—	—	—	—
531	53.0	55.5	58.0	55.5	55.0	56.0	53.5	55.0	—
532	49.0	48.0	50.0	51.5	51.0	53.0	X	—	—
533	48.5	49.5	56.0	54.5	53.0	60.5	X	—	—
534	50.0	54.5	Too ill	DIED	—	—	—	—	—
535	49.5	49.5	53.5	53.5	53.0	53.0	53.0	54.0	—

13988.5 90830

WEIGHT. IN KILO'S.

[illegible]

WEIGHT IN KILOS

ROW NO.	OCTOBER 1943	NOVEMBER 1943	DECEMBER 1943	JANUARY 1944	FEBRUARY 1944	MARCH 1944	APRIL 1944	MAY 1944	JUNE 1944
577	57.0	60.0	64.0	59.0	57.5	58.0	61.0	62.0	
578	46.0	—	—	—	—	—	—	—	
579	50.0	50.0	57.5	51.5	49.0	50.5	52.0	49.5	
580	50.0	—	—	—	—	—	—	—	
581	40.0	—	—	—	—	—	—	—	
582	59.0	58.5	61.0	67.0	60.0	59.5	62.0	69.0	
583	49.0	50.5	52.0	52.5	50.0	52.0	53.0	53.8	
584	42.5	—	—	—	—	—	—	—	
585	59.0	—	—	—	—	—	—	—	
586	48.5	52.0	53.0	50.5	49.0	49.0	51.5	48.5	
587	45.5	48.5	51.0	49.0	48.0	48.5	48.5	51.0	
588	45.5	—	—	—	—	—	—	—	
589	50.5	—	—	—	—	—	—	—	
590	57.0	57.5	55.5	57.0	57.5	57.5	57.5	59.0	
591	49.0	—	—	—	—	—	—	—	
592	47.5	—	—	—	—	—	—	—	
593	48.0	49.0	52.5	51.0	51.5	53.0	51.5	53.0	
594	52.0	—	—	—	—	—	—	—	
595	54.0	58.0	58.0	55.5	56.5	56.5	1 *	—	
596	58.5	—	—	—	—	—	—	—	
597	41.0	—	—	—	—	—	—	—	
598	56.5	—	—	—	—	—	—	—	
599	45.0	—	—	—	—	—	—	—	
600	49.0	—	—	—	—	—	—	—	
601	45.5	—	—	—	—	—	—	—	

15033.5

445.80

WEIGHT IN KILO'S

[illegible]

WEIGHTS IN KILO'S

ROW NO.	OCTOBER 1943	NOVEMBER 1943	DECEMBER 1943	JANUARY 1944	FEBRUARY 1944	MARCH 1944	APRIL 1944	MAY 1944	JUNE 1944
628	47.0	48.0	49.0	50.0	47.0	48.0	X	—	—
629	50.0	—	—	—	—	—	—	—	—
630	42.0	37.5	—	—	—	—	—	—	—
631	49.0	—	—	—	—	—	—	—	—
632	52.0	—	—	—	—	—	—	—	—
633	45.0	45.0	48.0	49.0	47.0	49.0	X	—	—
634	48.0	47.5	50.5	50.0	48.5	50.0	51.0	54.5	—
635	49.5	50.0	52.5	52.0	51.0	51.5	52.0	52.4	—
636	48.5	51.0	52.0	52.0	51.0	54.0	58.0	56.0	—
637	47.0	—	—	—	—	—	—	—	—
638	44.0	—	—	—	—	—	—	—	—
639	44.0	46.0	46.5	46.5	45.5	45.5	46.5	46.8	—
640	51.5	—	—	—	—	—	—	—	—
641	58.0	—	—	—	—	—	—	—	—
642	54.5	55.0	59.0	56.0	57.0	56.5	X	—	—
643	58.0	—	—	—	—	—	—	—	—
644	58.0	—	—	—	—	—	—	—	—
645	48.5	—	—	—	—	—	—	—	—
646	54.5	—	—	—	—	—	—	—	—
647	46.5	48.0	53.5	50.0	49.5	50.0	48.5	53.0	—
648	44.5	—	—	—	—	—	—	—	—
649	53.0	—	—	—	—	—	—	—	—
650	51.0	52.5	55.5	53.5	51.5	51.5	52.0	53.0	—
651	53.5	—	—	—	—	—	—	—	—
652	50.5	52.0	51.5	51.0	48.5	49.0	X	—	—

15765.0 3/5.20

WEIGHT IN KILOS

P.O.W. No	OCTOBER 1943	NOVEMBER 1943	DECEMBER 1943	JANUARY 1944	FEBRUARY 1944	MARCH 1944	APRIL 1944	MAY 1944	JUNE 1944
653	58.0	59.0	DEAD	—	—	—	—	—	
654	48.0	—	—	—	—	—	—	—	
655	43.0	45.0	46.5	47.0	47.0	49.0	49.0	50.5	
656	49.0	50.5	52.0	51.5	51.0	50.0	50.5	54.2	
657	48.5	—	—	—	—	—	—	—	
658	45.0	50.5	50.5	50.0	51.0	52.0	57.0	54.9	
659	52.0	—	—	—	—	—	—	—	
660	46.5	48.0	48.5	48.0	49.5	48.0	48.0	49.5	
661	44.0	46.0	47.0	47.0	46.0	46.5	46.5	50.0	
662	50.5	—	—	—	—	—	—	—	
663	43.5	47.5	50.5	51.0	50.0	54.0	53.0	54.2	
664	48.5	50.5	54.5	53.0	50.0	50.5	X	—	
665	61.0	65.0	67.0	64.5	62.0	62.0	61.5	59.0	
666	50.5	52.0	49.5	51.0	50.0	52.0	53.0	33.0	
667	55.0	55.5	60.0	59.0	65.0	66.0	62.0	66.5	
668	44.0	—	—	—	—	—	—	—	
669	41.0	—	—	—	—	—	—	—	
670	50.0	51.5	53.5	52.5	54.0	52.0	52.0	54.7	
671	49.0	51.0	51.5	52.0	51.0	55.0	52.5	55.5	
672	51.5	—	—	—	—	—	—	—	
673	47.5	—	—	—	—	—	—	—	
674	47.5	51.5	52.0	52.0	50.0	50.0	51.5	50.5	
675	51.5	57.0	52.0 Too little	DEAD	—	—	—	—	

16395.5 652.50

	<u>DEC.</u>	<u>JAN</u>	<u>FEB</u>	<u>MAR</u>	<u>APRIL</u>	<u>MAY</u>
676	49.5	52.0	50.5	50.5	X	—
677	51.5	51.5	51.0	51.0	49.5	53.5
678	58.0	56.5	56.0	56.5	56.0	60.0
679	54.0	55.0	60.5	53.5	53.0	54.0
680	53.0	51.5	50.0	50.5	50.5	51.0
681	51.0	53.0	51.5	53.0	X	51.2
682	58.0	54.0	52.0	55.0	X	—
683	50.0	49.5	50.5	50.5	X	—
684	47.0	46.5	46.5	46.0	46.0	47.8
685	45.0	55.0	DEAD	—	—	—
686	53.5	50.5	51.5	50.0	50.0	50.2
687	55.0	52	51.5	50.5	51.5	54.0
688	54.0	52	49.0	52.0	X	—
689	49.5	47.5	47.0	49.0	49.0	53.0
690	53.5	52.5	51.5	53.0	X	—
691	48.0	49.0	49.0	49.0	47.0	50.5
692	55.5	56.0	53.0	55.0	53.5	57.0
693	60.0	58.0	58.5	59.0	56.0	58.5
694	61.0	59.0	57.0	57.0	55.0	56.0
695	45.0	45.0	45.0	47.0	48.0	51.5
696	53.5	52.5	51.0	53.0	53.5	56.2
697	42.0	44.5	43.0	44.0	X	—
698	54.0	54.0	51.0	55.5	X	—
699	51.0	50.0	49.0	50.0	48.5	50.2
700	55.5	54.0	55.0	54.5	54.5	57.5
					172.70	861.10

	DEC.	JAN	FEB	MAR.	APRIL	MAY
701	66.0	67.5	69.0	70.5	X	-
702	49.5	50.0	48.0	50.0,	50.0	53.2
703	58.0	57.5	57.5	55.0	54.0	55.0
704	53.5	51.5	52.0	51.0,	50.5	53.5
705	56.0	53.0	54.0	53.0	55.0	54.5
706	56.0	60.0	61.0	63.0	64.0	61.0
* 709	55.0	58.0	63.0	58.0	X	-
710	44.5	44.5	44.5	43.0	X	-
711	45.0	43.0	42.5	43.0	43.0	42.5
712	62.0	61.0	57.5	58.0	X	-
713	53.0	50.0	49.0	50.0	50.0	49.0
714	56.0	55.0	55.0	53.0	52.0	55.5
715	49.5	48.0	47.5	48.5	46.5	49.5
716	72.0	74.0	72.5	78.0 79.5	79.5	80.1
717	52.0	51.0	51.5	51.0	50.0	50.5
718	68.5	65.0	63.0	64.0	63.0	68.0
719	NOT WEIGHED	54	58.0	64.0	65.0	61.0
720	45.0	45.0	44.0	45.0	45.5	43.7
721	45.5	DEAD	-	-	-	-
722	54.5	57.5	51.5	52.5	52.5	51.5
723	46.5	48.5	51.0	53.5	54.5	56.0
724	55.0	58.5 55.5	54.0	55.0	55.0	60.2
725	55.0	55.5	55.0	53.5	52.0	53.5
707	54.5	54.5	53.0	52.5	53.0	58.0
708	58.5	57.0	53.0	56.0	53.0	60.0

1116.20

18305.0

APRIL

MAY

726	63.0	69.0
727	70.5	71.0
728	79.0	77.0 78.0
729	57.0	54.0
730	61.0	63.2
731	68.0	69.2
732	57.5	58.5
733	67.5	70.2
734	54.0	55.5
735	52.5	54.0
736	58.0	64.9
737	52.0	53.6
738	53.0	57.9
739	55.0	55.0
740	57.5	62.0
741	57.5	58.4
742	58.0	58.0
743	64.0	66.4
744	57.5	61.5
745	55.0	59.2
748	61.5	60.0
744	65.0	65.0
748	49.0	50.0
749	61.0	64.5
750	60.0	59.8

19799.0

1838.80

APRIL.

MAY

751	53.5	54.0
752	56.0	58.0
753	53.0	53.0
754	51.0	56.3
755	54.0	55.5
756	60.0	58.0
757	50.0	49.4
758	57.5	59.5
759	55.0	55.5
760	61.5	61.2
761	59.0	60.7
762	56.0	58.5
763	61.0	62.5
764	47.5	48.0
765	58.5	59.2
766	58.0	62.0
767	58.5	56.5
768	55.0	57.0
769	60.0	60.5
770	54.0	54.8
771	53.0	56.0
772	57.0	59.0
773	55.5	51.7
774	53.0	57.0
775	66.0	68.7

1432.50

212045.0

on, 1

52.5

X

APRIL

MAY

23260.00

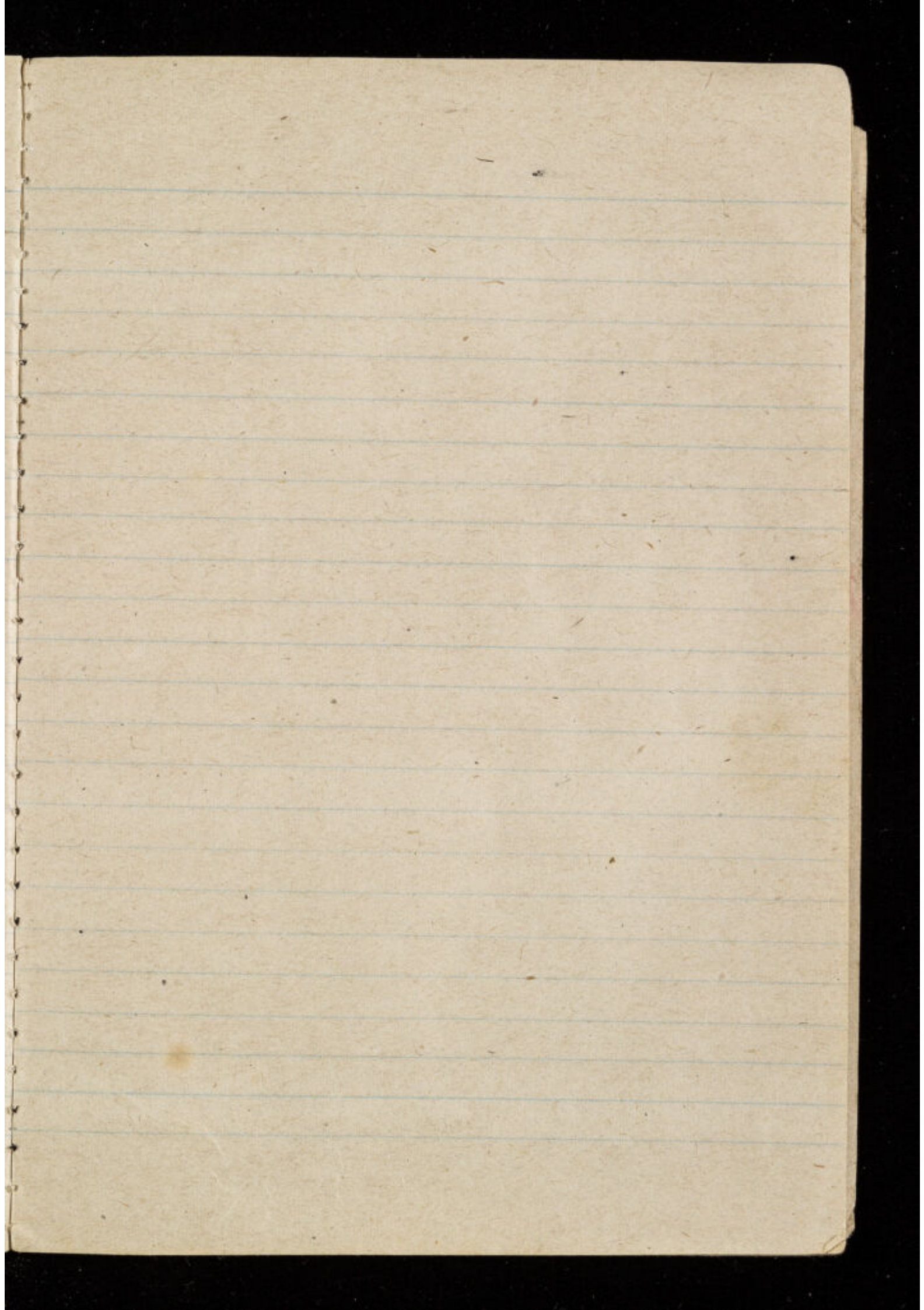
776	54.0	54.5
777	56.5	59.3
778	53.0	56.0
779	68.5	70.7
780	47.0 52.5	50.0
781	50.0	52.5
782	61.0	60.5
783	55.0	59.2
784	49.0	48.0
785	53.5	53.2
786	49.5	54.0
787	61.0	61.5
788	52.5	49.0
789	59.5	63.7
790	51.0	51.0
791	49.5	47.8
792	55.0	58.5
793	52.0 63.0	52.5
794	63.0	66.7
795	64.5	68.0
796	50.5	52.0
797	55.0	56.7
798	61.0	65.8
799	55.0	58.0
800	53.0	55.0

ODIAN

65.0

22584.0

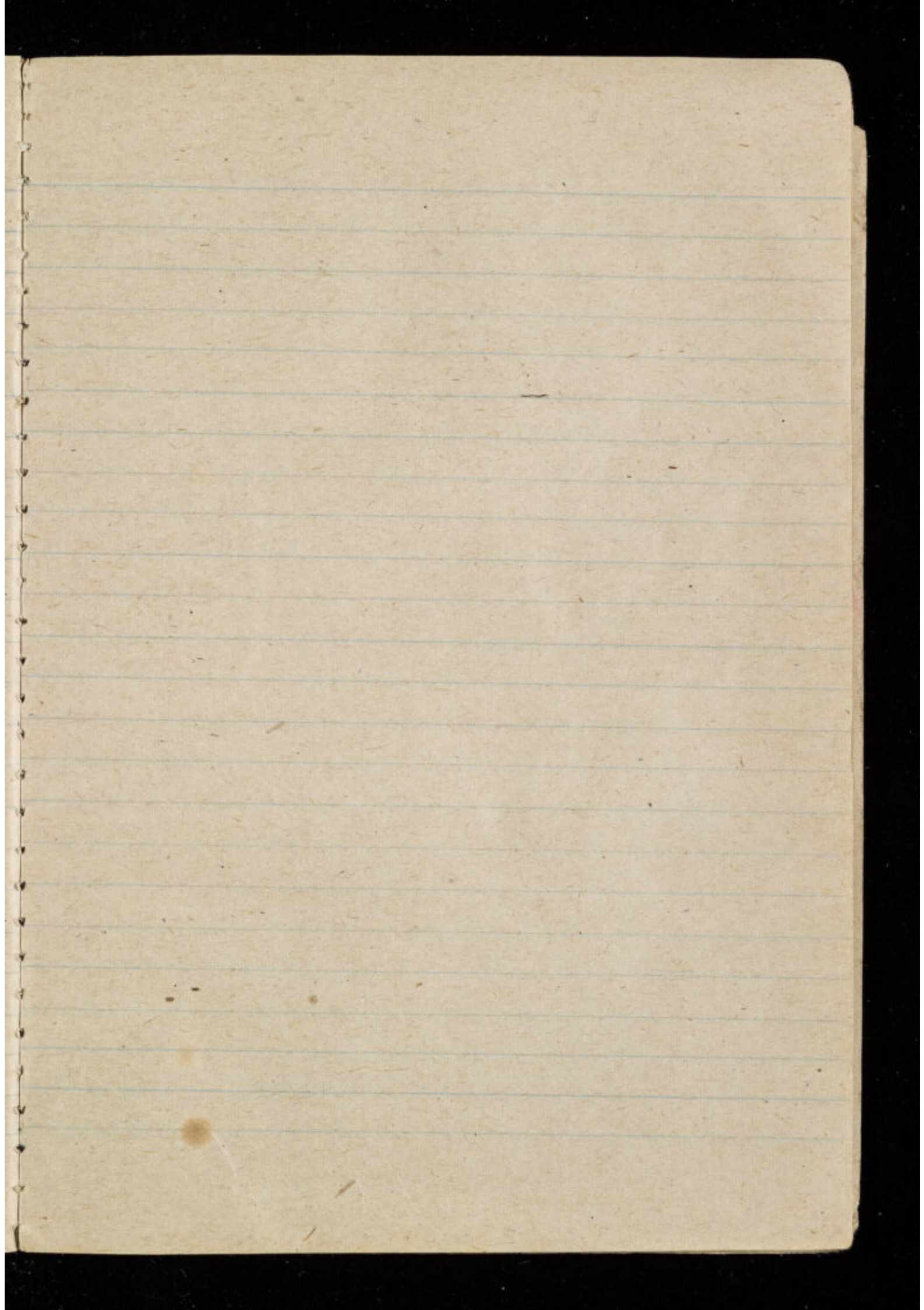
1428
1424.12



A Number of Blank Pages

Follow which have not

been Photographed.



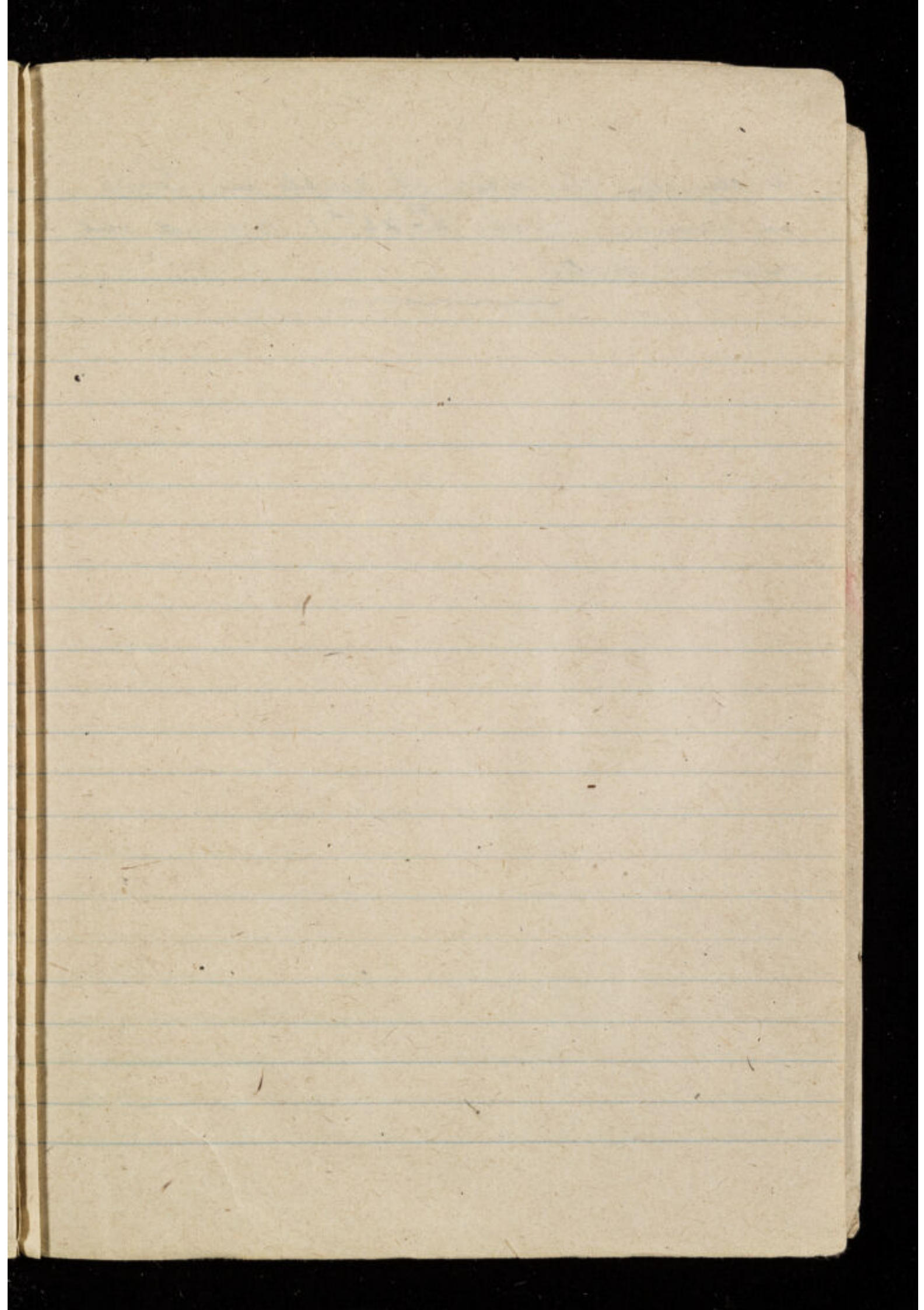
A few days before Christmas we
had very little hope of any extra's
in the way of Christmas fare as we
had been told that

The Christmas celebrations of 1944 were not on the same scale as those of Christmas 1943, but as was pointed out in the speech by the Commandant on Christmas morning the difficulties of supply of festive fare, and the severity of war conditions are fully realised by the prisoners in this camp. The efforts of the Commandant and Nippon Officers to obtain Christmas fare and to make the celebrations as enjoyable as was possible under difficult circumstances was fully appreciated by all the prisoners in this camp, and they are very thankful to the Commandant and Nippon officers for their generous gifts of Kical, Pine squash, cigarettes, sweets and oranges from the Christmas Tree, in addition to the pig, goat, bananas and sweet tea provided through the cookhouse.

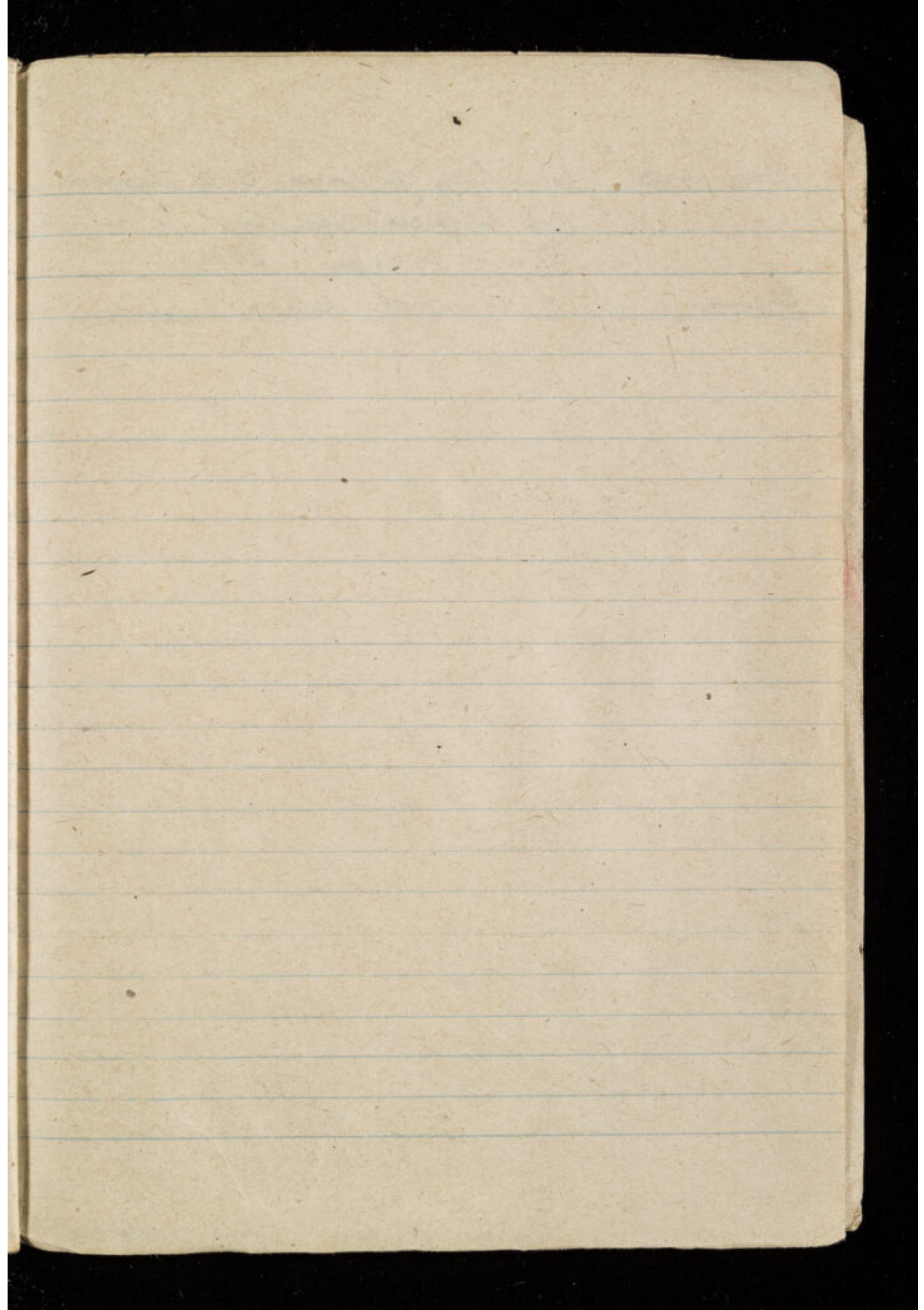
The thoughtfulness of the Commandant and Nippon officers in allowing us to hold our religious services in the

morning and the card service during
the afternoon was greatly appreciated.

The issue of mail from home, a
total of 670 letters;



Vaccination for whole of people in Camp
in January 1944 (16th - 23rd) carried out
on above dates.



Oct. 1943. New Party Average 51.0 Kilogramme
Old Party Average 53.6 "
General Average 53.06.

Beginning of cold weather period

774 / 53. 40
73

680.
521

600 / 10.62

940
2.2

1182

44 / 200

14.4 43/7

HACF

SEPTEN

CENMEN

REEL

W.C.

9 8 9 9 9

Part of the book is missing

RAMC 1280/3

VOL. 2

NOTE BOOK

WEIGHTS

COMMENCED JUNE 1944

(ノート A5)

9
1350
13
14
100
148
1000

P.O.W No	MAY 1944	WEIGHTS IN KILOGS				NOS 1-68		
		JUNE 1944	JULY 1944	AUG 1944	SEPT 1944	OCT 1944	NOV 1944	DEC 1944
1	55.2	59.0	57.0	57.5	60.0	58.0	59.7	59.8
2	60.0	62.5	60.0	62.5	62.5	/	/	/
3	54.0	55.0	54.5	54.0	55.0	52.0	54.0	54.3✓
5	55.5	57.0	55.0	59.0	58.0	/	/	/
6	54.0	54.0	54.0	55.0	57.5	/	/	/
13	57.5	60.0	59.0	62.0	62.5	60.5	63.7	61.5✓
17	55.0	57.0	54.0	57.0	58.7	55.0	58.5	59.0✓
22	50.2	53.7	52.4	56.0	58.0	55.0	59.0	57.0✓
29	65.7	65.0	65.0	63.5	65.5	/	/	/
30	58.2	60.0	59.5	61.0	59.0	55.0	57.0	59.0✓
31	63.0	57.5	52.5	57.5	58.5	58.0	59.5	59.5✓
32	54.7	53.2	51.5	54.0	51.0	49.0	54.0	55.0✓
36	53.0	54.7	53.5	56.0	53.4	54.0	14.1	52.0
43	67.0	58.5	57.5	58.0	63.5	/	/	/
44	75.5	75.8	72.0	73.5	72.0	73.5	72.5	72.0✓
51	54.2	55.0	55.0	56.0	57.0	56.0	59.0	60.0✓
52	61.0	61.5	60.5	62.5	63.4	62.0	63.4	66.0✓
53	58.0	59.0	63.4	59.0	60.0	58.0	61.5	60.8✓
56	55.0	60.0	58.0	56.0	55.2	53.5	55.0	55.5✓
60	56.0	59.0	57.0	57.0	59.0	/	/	/
61	67.0	66.0	64.0	65.0	67.0	65.0	65.8	64.5✓
63	65.0	65.0	65.0	64.0	63.5	60.5	62.0	60.5✓
64	57.0	59.8	58.0	57.5	61.4	/	/	/
68	65.0	64.7	62.5	62.0	65.5	64.0	64.3	64.5✓
		1435.9	1401.8	1425.5	1447.0	989-	968.200	1020.9

1950

1951

WEIGHT IN KILOS

Nos. 69-120

P.O.W No.	MAY	JUNE	JULY	AUG	SEPT	OCT	NOV	DEC
69	59.0	60.3	61.0	60.3	58.5	60.0	61.5	58.5 ^v
76	56.2	57.0	55.0	56.0	57.5	/	/	/
79	ILL	ILL	ILL	DEAD	/	/	/	/
80	65.3	67.0	66.5	67.0	64.0	66.0	68.5	67.0 ^v
81	50.0	56.5	54.3	55.0	56.5	61.0	62.0	61.0 ^v
84	52.2	56.0	52.0	52.0	53.3	51.0	52.0	53.5 ^v
85	57.0	61.0	59.9	62.7	61.5	62.0	60.0	59.0 ^v
87	51.0	54.0	53.5	55.0	57.2	56.5	57.5	60.5
88	58.0	59.7	59.0	63.0	62.5	59.0	61.0	60.0
89	55.0	58.0	56.0	57.5	56.0	59.0	59.0	57.3
90	52.5	54.3	51.0	52.0	51.0	50.0	53.0	52.0
96	53.7	54.7	53.5	56.0	55.5	55.0	58.8	58.0
97	62.7	64.0	63.5	63.0	71.0	66.5	68.5	66.0 ^v
100	53.0	55.5	53.0	56.5	58.0	56.5	56.0	53.5 ^v
102	63.5	65.0	65.0	68.0	69.0	62.5	66.5	66.0 ^v
103	66.2	68.7	63.5	68.0	68.2	67.0	65.0	66.0 ^v
106	60.2	63.5	62.0	62.0	60.5	57.5	58.0	57.5 ^v
107	69.7	72.0	70.0	74.0	71.0	62.5	65.0	65.0 ^v
108	52.2	55.5	54.0	59.0	59.5	57.0	59.3	57.5 ^v
112	62.0	64.5	64.5	65.0	62.2	62.0	62.0	58.0 ^v
113	53.5	54.5	53.0	56.0	55.7	54.5	54.0	56.0 ^v
115	50.2	53.5	DEAD	/	/	/	/	/
119	60.6	63.0	61.5	63.5	65.2	63.5	64.0	63.0 ^v
120	64.0	64.8	65.0	68.0	70.0	71.5	75.0	75.5 ^v
		1283.5	1296.2	1339.5	1393.0	1263.5	1286.60	1270.5

Nos 121 to 180

1378-1344.5 1382.5 1338.8 1182.40 1225.90 1210.5

Weight in KILOS.

Nos: 183 to 229

POW No	MAY	JUNE	JULY	AUG	9 SEPT	10 OCT	11 NOV	12 DEC
183	46.0	48.0	48.0	51.0	52.5	52.0	54.0	55.0 ^v
185	76.5	77.0	75.0	77.0	77.7	74.0	75.0	75.0 ^v
187	50.0	52.5	50.0	54.0	54.5	 		
189	64.2	65.0	64.0	65.5	65.0			
192	55.0	54.0	52.0	52.5	55.0	54.0	55.0	57.0 ^v
193	55.0	58.0	55.5	57.5	58.0	55.0	56.0	58.5 ^v
198	49.0	49.5	49.0	51.0	52.5	49.5	52.5	50.5 ^v
199	55.5	54.5	53.5	56.0	55.0	53.5	55.5	54.0 ^v
200	61.7	63.5	62.0	65.5	65.0	62.5	64.0	63.6 ^v
202	63.5	66.5	63.0	65.5	67.0	63.5	65.0	65.0 ^v
203	67.5	67.0	65.5	62.5	68.1	65.5	67.7	68.0 ^v
206	65.7	64.8	65.0	63.5	63.5	62.0	63	62.0.
208	54.0	54.0	53.0	54.5	144	56.0	54.5	51.0.
212	60.0	62.0	61.2	63.0	64.0	62.0	65.7	67.0 ^v
215	56.0	56.5	54.5	56.5	57.8	58.0	55.8	55.0 ^v
216	49.0	53.0	51.0	54.0	55.7	53.0	54.5	52.5 ^v
217	60.0	64.5	63.8	66.5	64.8	61.5	65.0	62.5 ^v
220	54.7	57.0	56.5	59.0	59.4	59.0	62.0	61.5 ^v
222	50.5	54.0	54.0	51.5	59.0	53.5	55.0	51.5 ^v
224	49.2	52.0	51.5	54.0	54.8	52.7	55.5	54.0 ^v
225	46.8	49.5	49.0	51.8	51.2	48.5	48.0	46.0 ^v
226	55.0	57.0	55.0	55.0	57.0	54.0	57.0	52.5 ^v
227	55.7	57.0	54.5	53.0	56.0	54.5	57.5	58.0 ^v
229	57.5	59.0	57.0	60.5	55.0	59.0	63.0	63.0 ^v
		1375.5	1363.5	1400.8	1365.5	1265.20	1301.20	1284. -

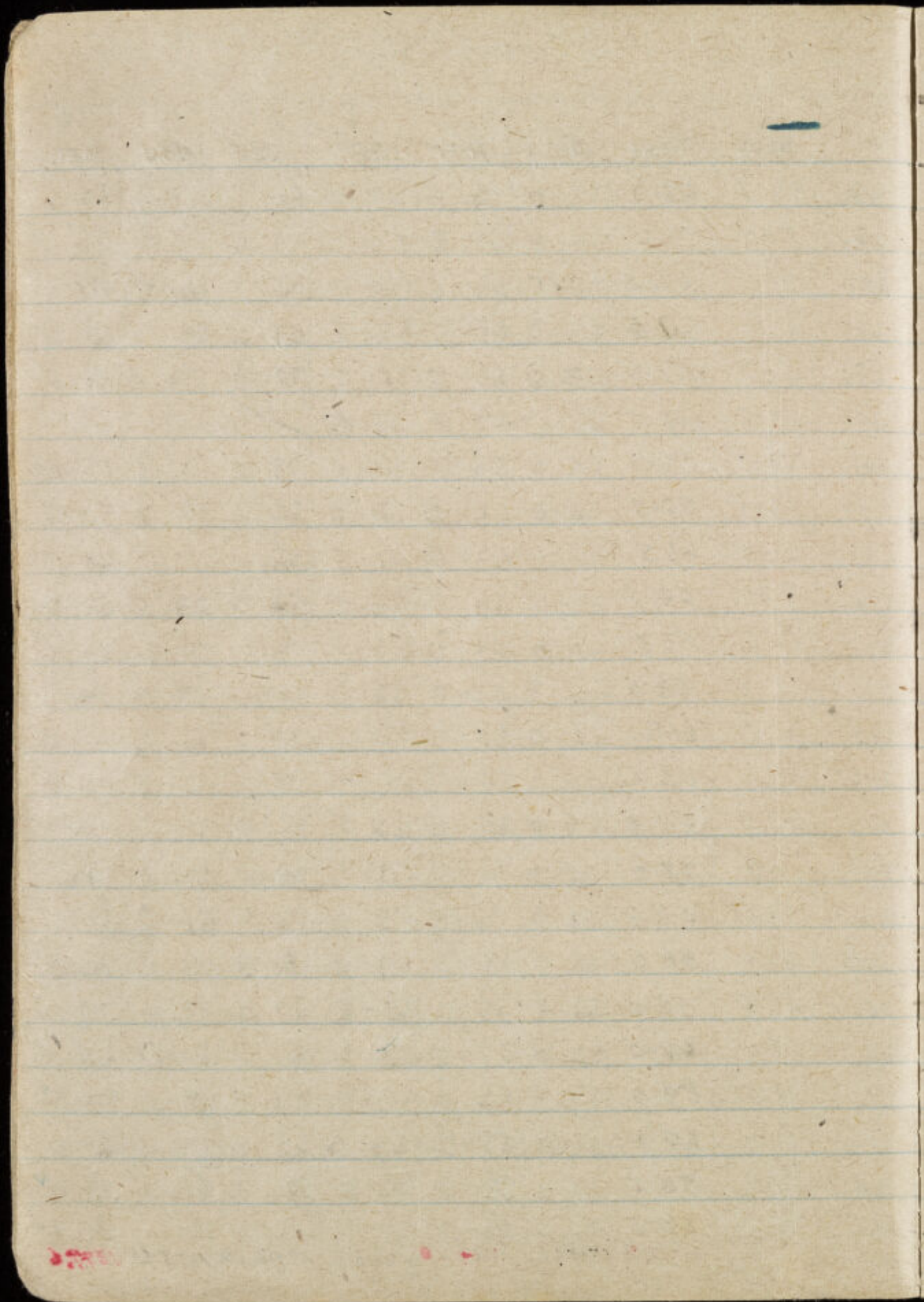
Weight in KILOS

Nos: 232 - 284

POW No	MAY	JUNE	JULY	AUG	9 SEPT	10 OCT	11 NOV	12 DEC
232	54.0	57.0	54.0	58.0	57.5	/	/	/
233	51.0	51.5	50.0	51.5	51.0	/	/	/
236	60.0	60.0	59.0	62.0	64.0	61.0	61.5	59.5 ⁺
239	46.8	50.0	50.0	49.0	48.5	47.0	49.0	47.5 [✓]
242	79.5	84.5	87.0	87.0	81.7	81.5	83.4	83.5 [✓]
245	62.5	62.0	59.5	59.5	59.5	/	/	/
247	76.3	78.0	78.0	79.0	78.9	76.0	75.7	74.0 [✓]
250	55.2	55.0	54.0	57.0	60.0	57.0	58.0	57.0 [✓]
252	65.5	66.5	70.0	72.0	70.7	67.2	69.2	70.0 [✓]
253	60.0	60.7	56.5	54.5	56.0	53.5	54.5	53.5 [✓]
255	54.0	56.3	57.0	55.5	55.0	56.0	56.0	56.0 [✓]
260	56.0	58.0	55.0	58.0	59.0	/	/	/
262	52.5	53.0	53.0	57.0	55.5	50.0	55.5	56.0 [✓]
266	59.0	60.2	59.0	59.8	57.5	55.5	57.0	59.0 [✓]
268	54.0	54.7	54.0	56.5	56.7	55.0	56.0	56.0 [✓]
269	57.0	55.0	55.0	57.5	58.0	56.0	58.0	57.8 [✓]
270	59.8	61.5	61.0	63.0	64.0	62.8	66.5	64.5 [✓]
274	61.2	62.3	65.0	66.5	67.2	64.0	64.0	56.0 [✓]
276	55.2	56.5	55.5	57.0	58.0	54.5	54.0	55.0 [✓]
277	57.5	60.8	59.0	61.0	61.0	60.0	62.5	62.0 [✓]
278	57.0	59.7	57.0	57.9	57.5	57.0	59.5	62.8 [✓]
280	69.0	74.3	70.0	71.0	72.4	69.0	70.6	68.5 [✓]
281	55.5	54.5	54.5	57.0	59.0	58.0	60.0	60.0 [✓]
284	53.5	55.0	52.5	57.0	56.5	53.8	55.5	54.5 [✓]
		1447.7	1425.5	1464.2	1465.1	11948.0	12264.0	1223.2

Weight in KILOS Nos: 285 to 315

POW No	MAY	JUNE	JULY	AUG	9 SEPT	10 OCT	11 NOV	12 DEC
285	58.5	63.0	63.0	63.5	65.0	62.5	63.8	63.6✓
286	49.7	51.7	49.5	51.5	50.0	50.5	51.0	51.0✓
287	61.0	62.3	60.0	63.0	64.0	62.0	64.0	64.0✓
288	61.5	60.5	62.0	61.5	62.5	59.5	60.0	60.0✓
289	56.7	58.7	58.0	58.5	58.5	57.0	57.0	56.5✓
290	70.5	69.5	66.5	69.5	78.5			
291	53.2	55.0	53.0	56.5	60.0	59.0	53.8	63.0✓
292	54.5	56.5	52.0	54.5	54.2	52.0	55.3	54.0✓
293	45.5	46.5	45.0	46.0	47.5	46.0	49.7	48.0
294	53.0	54.5	53.0	54.0	53.5	53.0	53.5	52.0✓
295	51.2	51.7	49.0	51.0	50.0	47.5	49.5	52.0✓
297	54.2	53.0	52.8	53.0	55.3	53.0	55.0	52.0✓
298	61.5	61.5	61.0	61.0	61.5	59.5	61.5	60.0✓
299	51.0	50.0	50.0	52.0	51.5	50.3	51.0	51.0✓
300	47.5	49.0	49.0	51.0	53.5	51.0	55.0	54.0✓
303	69.0	72.0	70.0	71.0	72.0	70.0	71.4	69.5✓
306	55.0	55.0	52.8	55.5	55.0	57.0	66.2	67.0✓
307	65.0	66.5	66.0	68.5	69.4	68.5	70.5	70.0✓
309	53.5	52.5	52.5	55.0	55.2	57.5	58.0	59.0✓
311	65.0	64.0	62.0	57.5	58.6	60.5	64.0	63.0✓
312	87.5	89.0	87.0	83.0	89.0	87.3	88.5	87.0✓
313	60.0	60.0	59.0	58.0	57.0	65.0	67.0	66.0✓
314	55.0	55.5	55.0	59.0	60.5	57.0	61.0	62.0✓
315	54.7	57.5	55.0	56.5	58.0	54.5	56.4	55.0✓
		1415.4	1383.1	1410.5	1440.2	1340.2	1378.6	1377.6



Weight in KILOS.

Nos 316 to 359

POW NO	MAY	JUNE	JULY	AUG	SEPT	OCT	NOV	DEC
316	72.0	74.8	75.0	76.0	77.2	72.0	72.0	72.0 ^v
319	62.4	62.0	62.0	63.0	63.2	61.3	63.2	62.0 ^v
320	69.0	72.0	75.0	75.5	74.5	72.5	74.3	71.0 ^v
324	59.3	61.8	59.0	59.0	60.3	58.0	58.0	60.2
325	63.0	65.0	65.5	64.0	64.5	66.5	69.0	71.0
331	64.2	63.5	63.0	63.5	63.0	61.7	61.7	62.0
332	53.0	54.0	52.0	54.0	57.5	53.0	57.0	57.0
333	57.5	59.0	58.5	62.5	64.0	66.5	68.3	67.5
335	63.5	63.0	62.0	63.0	64.5	62.0	62.7	63.0
339	54.5	58.7	57.0	56.5	56.7	52.5	56.8	55.5
342	53.0	55.0	54.0	55.0	57.0	59.5	58.5	57.5
343	51.8	53.5	51.0	53.0	53.5	49.0	51.0	52.0
346	55.0	54.3	52.0	52.5	53.0	52.5	56.0	55.6
347	62.0	62.5	62.0	62.0	61.0	60.5	60.5	58.0
348	55.2	58.0	55.5	59.0	58.0			
349	53.0	55.0	53.0	ILL	ILL	ILL	ILL	ILL
351	56.5	64.0	58.0	59.0	58.4			
352	56.5	59.0	57.2	59.5	60.0	57.5	58.7	56.5
353	57.7	59.5	59.8	62.0	63.5	63.0	63.5	63.2
354	47.5	48.3	50.0	51.0	54.0	52.5	54.5	54.5
355	59.6	62.0	57.8	62.0	60.2	58.5	62.0	60.5
356	61.0	62.5	62.0	65.0	64.0	63.0	63.5	62.0
357	53.7	55.0	51.0	53.0	52.5	56.0	54.2	53.0
359	64.0	63.0	62.0	62.0	64.5	63.0	62.0	62.0
		1445.4	1414.3	1392.1	1400.5	1261.00	1287.40	1276.5

Weight in Kilos

Nos. 363 to 409

POW No	MAY	JUNE	JULY	8 AUG	9 SEPT	10 OCT	11 NOV	12 DEC
363	46.0	49.0	48.0	52.0	50.0	52.0	53.3	50.0
365	60.2	63.5	63.5	64.5	67.0	62.5	64.5	63.0
367	52.3	54.5	55.0	56.0	55.0	52.0	53.5	53.2
368	60.0	64.0	55.0	58.0	60.0	56.5	58.0	56.5
370	53.5	57.0	55.0	55.0	57.0	53.0	56.3	56.0
371	62.7	69.3	68.5	72.5	72.5	72.5	72.5	71.5
372	65.5	66.2	63.5	65.7	65.1	61.5	63.0	60.5
376	52.3	57.0	55.0	55.0	54.0	52.3	66.9	55.5
377	51.0	54.3	54.0	55.0	58.0	56.0	57.5	57.0
379	67.3	67.7	67.2	67.0	67.0	65.0	65.5	64.0
381	59.2	61.5	60.0	62.5	64.7	65.0	63.8	65.0
382	57.7	61.0	61.0	62.5	65.0	61.5	64.5	65.0
383	53.2	54.5	55.0	56.5	59.5	57.0	60.0	57.0
386	60.0	61.0	60.2	61.0	62.0	55.0	53.5	53.5
387	58.5	60.0	60.0	61.5	62.2	61.0	60.5	58.5
388	54.9	56.5	57.5	58.0	60.0	57.3	60.0	59.0
395	58.2	61.0	59.0	61.0	62.7	62.5	61.8	62.5
400	48.0	47.5	49.9	47.5	49.0	45.3	46.7	47.0
402	68.7	70.0	70.0	70.0	70.2	68.0	69.0	69.5
403	52.5	53.5	59.0	59.0	59.5	57.0	58.0	56.8
405	62.0	61.5	61.0	63.9	67.0	65.0	69.0	69.5
406	60.0	60.3	60.5	64.0	63.5	61.0	61.9	61.5
408	52.0	58.0	56.0	57.5	60.0	55.0	58.5	58.0
409	51.2	58.3	55.5	57.5	62.0	60.0	59.7	57.0
	1424.1	1401.3	1443.9	1472.9	1413.2	1457.2	1447.1	

WEIGHT IN KILOS

Nos 413 to 472

P.O.W. No	MAY	JUNE	JULY	8 AUG	SEPT	OCT	NOV	DEC
413	55.0	61.0	59.0	61.5	63.4	60.5	64.0	62.0
415	59.8	61.7	61.0	62.5	64.2			
417	64.5	63.0	60.5	62.0	61.5	59.0	61.2	62.0
419	55.5	57.0	57.0	57.5	59.0	56.0	58.0	57.6
422	58.0	60.5	58.0	56.5	60.3	55.0	58.5	56.5
426	64.2	64.5	64.0	64.5	64.3	62.0	64.5	61.0
427	57.0	56.0	52.5	54.0	53.5	51.2	54.0	54.0
429	77.2	78.0	78.0	78.0	74.5	69.0	67.0	66.0
433	44.0	47.0	43.0	43.5	47.5	46.5	47.3	48.0
436	61.2	62.5	60.0	61.0	62.5			
438	59.0	61.2	62.5	65.0	65.0	67.0	66.5	66.0
439	78.0	79.0	64.0	DEAD.				
440	59.9	63.5	65.0	60.6	66.5	64.0	66.5	64.0
445	53.0	56.0	54.0	54.0	55.5	51.0	51.7	50.8
450	57.6	59.5	58.0	59.5	59.5	58.0	60.5	59.0
451	60.7	61.5	62.2	60.0	63.0			
453	56.2	59.3	57.5	57.5	61.0	58.5	59.0	58.0
455	56.0	57.5	55.0	58.0	59.5	58.0	59.3	58.5
459	91.3	94.5	90.0	94.0	96.8	95.0	93.0	90.0
462	72.5	71.7	69.0	71.0	71.5			
464	62.0	61.2	59.5	59.5	59.5	58.0	60.0	59.0
469	63.0	63.0	61.0	65.0	62.0	60.5	63.5	62.3
470	62.0	64.0	64.0	61.5	66.5	63.0	64.0	62.5
472	53.0	54.0	52.0	52.0	52.7	50.5	53.0	52.5
		1617.1	1466.80	1423.6	1459.7	1141.20	1181.50	1149.6
					1449.7			

Weight in KILOS. Nos. 474 to 516

POW No	MAY	JUNE	JULY	AUG	SEPT	OCT	NOV	DEC
474	57.5	59.0	58.0	58.0	59.0	56.0	57.2	57.7
477	62.5	66.0	62.0	63.0	68.0	68.0	66.0	65.2
478	65.5	65.7	65.0	65.5	68.7	62.0	66.7	60.0
481	49.5	51.7	50.0	53.0	52.5	51.2	54.0	55.0
483	48.0	50.5	48.5	50.0	51.0	50.0	50.5	50.0
484	75.0	74.2	71.5	74.0	74.0	70.0	71.7	71.7
485	53.0	54.0	54.0	55.0	56.0	55.0	57.5	56.0
486	56.0	56.0	53.5	53.5	51.2	49.0	49.0	48.0
487	47.0	47.5	45.8	45.0	51.0	49.5	50.0	49.5
488	59.9	63.5	60.0	61.0	62.0			
489	70.5	72.0	70.0	70.5	71.0	68.0	70.0	68.0
491	58.0	58.0	56.5	55.0	55.0	53.5	55.0	51.5
492	58.5	59.0	59.5	59.5	58.0	58.0	60.0	58.0
494	60.5	61.5	63.5	64.5	62.5			
495	51.0	55.5	52.0	52.0	53.0	53.5	54.5	56.0
497	56.5	58.0	57.0	59.5	62.0	58.0	58.0	57.8
501	51.5	53.0	52.0	53.0	53.5	51.0	53.5	52.5
504	47.0	50.5	48.0	50.0	52.0	50.0	54.0	55.5
505	57.0	55.0	57.0	56.0	56.5	58.0	58.0	55.5
508	60.5	60.0	59.0	60.0	58.9	58.0	59.0	57.0
510	60.0	61.5	61.5	60.0	61.0	59.0	60.5	61.5
511	61.3	63.5	61.5	56.2	65.0	59.5	60.6	60.5
512	53.8	53.5	53.5	50.5	55.0	53.5	54.5	55.0
516	63.5	64.0	65.5	66.5	68.0	65.0	67.7	66.0
		1413.8	1384.8	1389.30	1442.24.8	1265.80	1287.20	1272.5

WEIGHT IN KILOS

517 to 582

POW Nº	MAY	JUNE	JULY	AUG	SEPT	OCT	NOV	DEC
517	51.2	52.0	54.0	51.8	51.2	51.0	53.2	52.0
518	55.5	55.5	54.0	57.0	57.5	55.5	56.0	55.0
519	67.0	67.0	63.8	62.8	62.0	60.0	60.7	59.5
520	52.0	55.0	52.1	54.0	59.2	57.0	59.5	58.0
521	57.0	61.2	58.0	58.0	58.5			
524	58.0	61.0	64.0	65.0	63.4	60.5	61.0	61.0
525	56.0	57.5	55.0	57.5	59.5			
527	55.5	56.5	55.5	60.0	61.0	58.0	61.0	60.7
531	51.0	54.0	56.5	58.0	56.5	53.5	54.0	52.5
535	54.0	57.0	57.5	58.0	59.0	57.5	60.0	58.5
544	57.0	58.0	59.0	60.0	61.0	60.0	61.6	63.0
545	56.0	59.0	55.0	59.5	59.0	59.0	63.5	62.0
546	55.6	58.0	57.8	59.5	60.0	57.2	59.0	61.0
553	67.7	71.0	67.5	68.5	67.5	66.0	66.2	66.3
554	57.5	61.5	60.0	62.5	63.5	63.0	69.5	69.0
559	64.5	63.2	63.3	63.0	63.5	63.5	62.5	61.0
561	47.5	50.0	45.0	49.3	51.0	49.0	51.5	51.5
566	57.2	58.5	58.0	58.5	60.5	57.5	59.0	57.0
570	62.5	122	122	122	64.0	63.0	67.0	68.5
572	54.5	55.5	55.2	55.0	58.5	57.0	57.3	58.0
576	57.6	60.0	58.5	60.0	61.5	60.0	61.5	60.5
577	62.0	64.5	60.0	62.5	67.0	63.0	63.5	64.5
579	49.5	50.5	50.0	49.0	50.0	49.5	50.0	48.0
582	69.0	73.5	69.5	71.0	73.0	68.0	69.5	70.4
		1357.2	1329.2	1361.4	1447.8	1298.20	1330.1	1318.1

WEIGHT IN KILOS

593 to 661

POW N ^o	MAY	JUNE	JULY	AUG	SEPT	OCT.	NOV	DEC
583	53.8	56.5	53-0	53.5	55.0	55.5	57.5	57.5
586	48.5	50.0	52-0	52.5	50.5	57.5	50.5	44.5
587	51.0	54.5	52-0	54.0	54.0	51.3	53.8	52-0
590	59.0	62.0	64-0	67.0	69.0	70.5	73.0	70.0
593	53.0	57.0	56-0	56.0	57.0	59.0	57.0	60.0
604	47.8	50.0	48.5	51.0	51.5	48.5	51.5	50.0
605	60.5	62.2	61-0	62.5	63.2	59.5	60.0	60.0
606	62.0	62.5	63.5	62.5	62.5	61.0	62.0	62.0
607	52.5	54.5	51.5	53.0	54.0	53.0	54.7	55.0
614	57.4	58.5	58.5	60.0	59.0			
617	56.0	59.8	58.5	58.8	62.2	59.2	61.3	60.0
621	57.0	59.0	58.0	59.5	61.0	59.5	59.0	60.0
625	57.7	50.7	50.0	50.0	54.5	53.0	59.0	56.0
634	54.5	57.0	55.0	58.0	62.2	60.5	63.7	63.0
635	52.4	59.5	61.5	64.0	65.5	64.0	65.0	64.5
636	56.0	55.5	54.0	55.0	55.0	55.7	55.0	52.0
639	46.8	49.0	48.5	49.5	50.0	50.0	49.2	50.6
647	53.0	55.0	55.5	55.0	59.7	57.5	60.2	60.0
650	53.0	55.0	54.0	57.0	58.0	56.0	55.5	58.0
655	50.5	52.0	48.0	50.0	51.0	49.6	54.0	53.5
656	54.2	55.0	55.5	57.0	57.9	54.5	56.7	56.0
658	54.9	53.2	55.0	55.0	53.0	47.0	50.0	47.0
660	49.5	53.0	49.5	53.0	52.0	52.0	53.5	53.5
661	50.0	50.0	48.0	50.0	50.3	49.5	52.0	51.5
		1331.4	1311.-	1349.8	1362.-	1283.20	1314.10	1296.6

Weights in Kilos Nos 663 to 700

P.O.W No	MAY	JUNE	JULY	AUG	SEPT	OCT.	NOV	DEC
663	54.2	58.5	56.0	58.5	57.7	56.5	59.0	57.5
665	59.0	65.5	61.0	64.0	63.0	61.0	63.0	64.0
666	53.0	54.5	55.0	58.5	57.0	56.0	61.7	62.5
667	66.5	65.0	62.5	60.5	61.5	58.0	60.5	59.8
670	54.7	57.0	57.0	60.0	60.0	59.0	58.3	58.5
671	55.5	56.8	54.5	56.0	59.2	55.5	58.0	55.0
674	50.5	53.0	52.0	52.0	52.5	52.0	58.0	60.0
677	53.5	52.0	52.0	55.0	57.0	54.5	57.2	55.0
678	60.0	63.0	63.0	63.0	62.0	63.0	68.5	57.0
679	54.0	53.0	56.0	57.0	60.2	59.0	61.5	59.4
680	51.0	55.2	54.4	55.5	56.3	57.0	58.5	59.0
684	47.8	50.5	49.0	49.0	49.5	47.6	50.0	51.0
686	50.2	52.0	52.5	55.0	56.0	53.0	57.0	55.0
687	54.0	54.0	53.0	52.8	55.0	54.5	53.5	55.0
689	53.0	54.5	54.0	56.5	55.5	54.0	58.0	58.5
691	50.5	51.3	50.0	49.5	50.0	51.5	52.0	52.0
692	57.0	59.0	58.5	59.0	58.0	58.0	61.2	63.0
693	58.5	59.0	60.0	62.0	62.7			
694	56.0	58.0	57.0	57.0	60.5	59.0	60.0	59.0
695	51.5	55.5	53.0	52.0	57.5	55.5	59.7	58.5
696	56.2	59.3	59.5	61.5	64.4	64.0	66.5	69.0
699	50.2	51.4	51.0	51.0	52.3	51.0	54.5	52.0
700	57.5	58.2	57.0	57.0	57.5	59.6	61.0	59.5
	1298.5	1275.4	1302.3	1325.3	1289.20	1297.60	1297.7	

1932

1932

Weights on Kinos Nos. 702 to 729

POW Nº	MAY	JUNE	JULY	AUG	SEPT	OCT	NOV	DEC
702	53.2	55.0	58.3	57.0	60.0	55.0	58.5	57.0
703	55.0	58.5	57.5	59.5	63.0	60.0	64.0	60.5
704	53.5	52.5	51.5	54.0	55.0	54.0	59.0	58.0
705	54.5	56.5	57.0	56.0	56.0	55.0	55.5	53.5
706	61.0	63.7	63.7	60.5	61.0	62.5	66.0	66.5
707	58.0	57.3	56.0	59.0	58.0	55.5	57.0	55.5
708	60.0	61.5	58.5	58.0	55.5	56.5	60.5	65.5
711	42.5	43.5	43.5	48.5	50.0	50.5	55.0	53.7
713	49.0	50.0	51.5	52.0	53.0	52.5	57.0	56.0
714	55.5	54.5	53.0	56.0	54.0	50.0	53.0	51.0
715	49.5	51.5	49.0	50.0	51.3	49.0	52.0	52.0
716	80.1	80.0	79.0	79.0	82.0	80.0	78.0	79.5
717	50.5	52.5	50.0	54.5	54.5	51.0	54.9	54.5
718	68.0	69.3	67.0	68.0	73.4	<div style="border-top: 1px solid black; height: 10px; width: 100%;"></div>		
719	61.0	70.0	68.5	72.0	72.0	73.0	77.0	77.0
720	43.7	48.5	47.0	47.8	48.0	45.5	48.0	47.0
722	51.5	52.0	52.2	53.8	57.0	54.5	56.0	54.5
723	56.0	57.5	54.8	56.0	57.0	55.0	57.5	54.5
724	60.2	57.0	60.5	60.0	61.8	62.0	66.5	64.3
725	53.5	54.0	51.5	55.0	54.8	52.5	55.0	55.0
726	69.0	71.0	72.0	74.7	76.5	76.0	76.0	74.0
727	71.0	69.3	70.0	73.5	72.5	71.0	74.0	76.0
728	78.0	75.5	78.5	76.0	77.5	74.0	77.5	76.4
729	54.0	56.0	52.5	53.0	54.0	51.5	51.0	54.0

1417.1 1403- 1432.8 1457.8 1346.5 1408.2 1392.7

WEIGHT IN KILOS. Nos: 730 to 753

P.O.W N ^o	MAY	JUNE	JULY	AUG	SEPT	OCT	NOV	DEC.
730	63.2	64.3	63.5	65.0	64.0	60.0	46.5	63.0
731	69.2	64.7	65.5	66.5	69.4	65.0	70.0	66.0
732	58.5	63.5	64.0	65.0	66.5	63.0	65.3	63.0
733	70.2	71.0	68.8	69.7	69.3	67.5	68.9	68.5
734	56.5	53.0	54.0	58.0	58.5	56.5	54.0	51.0
735	54.0	56.0	55.5	56.8	57.2	55.0	56.3	56.7
736	64.9	67.0	66.0	65.8	67.2	65.0	63.5	63.4
737	53.6	54.5	53.5	56.0	53.5	51.0	52.2	50.5
738	59.9	62.5	60.5	63.0	67.7	64.0	62.5	65.5
739	55.0	57.0	56.8	59.5	58.0	56.5	56.5	54.0
740	62.0	64.0	62.8	64.5	62.4	61.0	61.0	60.3
741	58.4	61.0	59.0	60.0	64.0	58.5	59.5	58.0
742	58.0	60.5	58.5	59.0	58.5	58.0	58.0	57.7
743	66.4	67.0	65.0	68.0	66.0	63.0	65.4	61.0
744	61.5	65.5	65.0	68.5	71.2	68.0	70.5	66.5
745	59.2	60.0	58.5	60.0	60.0	57.0	58.4	57.5
746	60.0	62.6	61.0	59.8	58.5	60.5	63.0	61.5
747	65.0	65.0	63.0	65.0	66.3	63.5	64.2	64.5
748	50.0	53.0	51.0	53.5	55.0	51.5	53.5	52.0
749	64.5	65.0	63.0	64.8	63.5	60.5	61.3	61.2
750	59.8	64.0	61.0	61.0	61.0	54.5	57.0	56.0
751	54.0	53.0	52.0	51.0	55.0	54.0	55.0	57.5
752	58.0	57.0	57.0	58.0	59.0	56.2	57.2	58.0
753	53.0	55.0	54.3	58.0	58.0	55.5	57.3	58.0
		1466.1	1430.5	1473.4	1494.7 1483.7	1425.20	1467.00	1431.2.

WEIGHT IN KILOS

754-777

POW.								
NO.	MAY	JUNE	JULY	AUG	SEPT	OCT	NOV	DEC
754	56.3	57.5	57-0	59-0	59.5	55.8	57-0	56.3
755	55.5	54.0	53-0	53-0	52.8	51-0	51.5	50.8
756	58.0	60.0	59.5	60-0	57-0	54-0	54-0	53.7
757	49.4	50.5	50-0	51-0	54.5	53-0	54-0	54-2
758	59.5	60.0	60-0	61-0	61.5	58.7	59.5	62.0
759	55.5	59.7	62-0	62.5	61.2	60.5	64.0	60.5
760	61.2	63.0	62-0	61.5	63.8	61.2	62-0	63-0
761	60.7	62.5	63-0	63.5	64.2	62.3	64-0	63.5
762	58.5	61.5	61.5	62.5	65.7	61-0	62.7	60.0
763	62.5	64.0	58-0	60-0	59.2	58-0	60.5	61-0
764	48.0	50.0	49.5	49-0	49.5	47.5	50-0	51.3
765	59.2	64.0	65-0	65-0	65.5	65-0	63.5	64-0
766	62.0	64.0	62.5	65-0	66-0	62-0	63-0	61.5
767	56.5	61.0	59-0	59-0	61.2	59-0	59-0	60.5
768	57.0	57.0	53.5	51.5	55.5	51.5	55.5	55-0
769	60.5	63.0	59.5	62.5	63.5	61-0	61-0	60-0
770	54.8	57.5	57-0	58.8	58.5	57-0	59-0	56.5
771	56.0	57.0	56.5	55.5	57-0	56-0	56.5	55.8
772	59.0	62.3	62-0	63.5	65-0	62-0	62-0	60-0
773	51.7	60.5	57-0	59-0	59-0	57-0	57-0	56-0
774	57.0	58.0	56-0	56.5	57-0	57.3	56.5	58-0
775	68.7	71.7	72.5	71-0	72.5	69.5	70.2	69.3
776	54.5	55.5	55-0	56-0	57.7	57-0	57-0	57.5
777	59.3	63.5	60.5	61-0	61-0	59-0	58.5	57-0
		1437.2	1411.5	1420.3	1409.3	1397.2	1412.2	1407.4

WEIGHT IN KILOS

Nos 778 - 800

ROW NO	MAY	JUNE	JULY	AUG	SEPT	OCT	NOV	DEC
778	56.0	57.5	57.5	59.5	61.0	58.0	58.5	60.2
779	70.7	70.0	67.0	69.0	67.0	64.5	68.0	67.8
780	50.0	49.0	49.0	49.0	50.5	48.0	48.0	48.5
781	52.5	54.0	53.5	55.5	57.2	56.0	56.0	53.5
782	60.5	64.0	60.0	59.0	64.0	58.0	61.0	57.0
783	59.2	62.0	58.8	59.8	60.0	59.0	58.2	57.8
784	48.0	47.5	46.5	47.5	50.0	48.0	49.5	51.3
785	53.2	56.0	52.0	55.0	55.0	51.0	54.5	52.5
786	54.0	56.5	53.5	55.0	57.0	55.0	56.0	55.5
787	61.5	62.7	61.5	62.0	61.0	59.5	59.5	57.5
788	49.0	53.0	53.0	53.0	55.5	53.5	53.7	53.0
789	63.7	65.0	63.5	64.5	64.2	62.5	63.0	62.0
790	51.0	52.0	51.5	52.0	53.0	52.5	53.5	52.0
791	47.8	48.5	47.5	50.0	51.0	48.5	51.4	48.5
792	58.5	59.0	60.0	61.5	63.0	57.5	61.2	59.5
793	52.5	55.5	54.0	56.5	54.5	52.5	54.0	53.5
794	66.7	67.0	67.0	68.0	70.5	66.5	70.0	69.5
795	68.0	69.0	67.0	67.3	68.7	66.8	68.2	68.5
796	52.0	51.8	51.2	50.0	51.3	48.0	47.6	48.0
797	56.7	59.0	60.0	60.5	60.5	59.5	61.0	61.0
798	65.8	66.5	65.5	68.0	68.0	66.5	65.5	65.0
799	58.0	58.5	57.0	57.0	60.0	56.0	59.0	59.0
800	55.0	59.0	54.0	55.0	59.0	58.5	56.0	55.8

1343. — 1320. — 1334.6 1361.9 1303.20 1333.30 1316.9

WEIGHT IN KILOS

Nos 801 to 824

POW NO	MAY	JUNE	JULY	AUG	SEPT	OCT	NOV	DEC
801		61.3	60.0	62.0	64.0	62.0	64.0	63.5
802		69.5	67.0	69.0	72.5	70.0	72.5	71.0
803		65.0	65.0	67.5	66.3	64.5	66.0	67.4
804		68.0	67.0	69.0	69.7	68.5	71.2	69.5
805		63.5	64.5	66.5	66.7	62.0	66.7	67.5
806		52.0	51.0	51.5	53.4	51.0	52.0	54.0
807		58.0	57.5	59.0	60.0	56.0	57.0	51.5
808		57.5	55.0	58.0	62.2	56.5	60.0	56.5
809		64.5	65.4	65.0	65.0	61.0	64.2	60.0
810		58.5	55.5	58.0	60.7	56.4	59.3	60.0
811		55.0	52.0	53.5	55.8	53.0	55.0	56.5
812		65.5	64.0	65.5	68.0	63.0	64.0	64.0
813		57.0	52.0	54.5	55.0	53.0	52.0	52.0
814		56.0	54.8	58.8	58.0	57.5	58.5	58.3
815		74.3	70.6	70.0	69.7	66.0	67.4	66.8
816		76.5	76.0	78.0	76.0	72.8	72.5	71.0
817		59.0	56.0	58.5	62.0	61.0	60.0	61.5
818		55.0	54.0	58.0	56.5	55.0	55.5	55.0
819		55.0	53.8	56.0	58.5	55.0	56.5	55.5
820		66.7	65.0	65.0	64.2	63.0	65.0	64.5
821		60.5	56.5	57.0	59.7	56.2	58.9	56.0
822		59.5	56.0	56.0	58.0	55.0	57.0	59.0
823		59.5	57.5	59.0	58.3	55.0	55.0	52.0
824	73.0	73.0	71.5	68.5	71.4	68.0	68.3	66.5
		1510.2	1452.8	1483.0	1523.5	1462.40	1479.50	1457.2
					1513.6			

Weight in KILOS

POW Nº	MAY	JUNE	JULY	AUG	SEPT	OCT	NOV	DEC
825		65.0	64.5	65.0	67.0	61.5	64.6	62.4
826		61.5	59.5	62.0	62.0	59.5	60.5	59.5
827		58.0	56.0	59.8	60.0	58.0	59.0	60.0
828		61.3	58.0	59.7	59.7	57.0	58.7	57.5
829		61.0	59.0	57.0	59.0	58.0	58.5	59.0
830		68.5	65.0	67.5	66.0	64.5	66.3	63.5
831		60.0	57.0	57.0	59.0	55.0	57.5	56.5
832		54.3	56.0	56.8	64.2	62.5	60.0	62.0
833		60.3	61.0	62.0	63.0	61.0	63.0	62.0
834		55.5	56.0	59.0	57.5	57.0	58.5	57.5
835		70.0	66.0	66.5	68.1	64.0	64.5	64.0
836		62.0	59.8	61.0	61.6	58.0	58.0	61.0
837		55.0	55.0	57.8	57.0	55.3	56.0	56.4
838		59.8	57.0	57.0	59.5	58.0	61.0	61.0
839		69.8	68.0	69.0	70.5	68.3	69.3	67.0
840		54.5	52.5	62.5	62.6	60.0	60.0	58.5
841	-	61.0	59.0	60.0	61.5	60.0	61.0	60.5
842		65.0	63.5	65.0	61.7	58.5	62.0	61.5
843	-	64.5	64.0	62.0	62.3	59.0	61.5	60.0

26583.30 265588 26748.5 24159.60 24782.00 24584.4
 59.473 25667.30 ~~267~~ 414 413 414
 57.515 26759.30 58.357 60.005 57.38
 -264.18 64.045 2.146 1.648 0.682
 59.689 60.371
 1188.- 1147.2 1167.6 1135.0 115990 1147.2
 1182.4 1180

WEIGHT IN KILOS

POW
No.

MAY

JUNE

JULY

AUG

SEPT

OCT

NOV

DEC

WEIGHT IN KILOS

POW
Nº

MAY

JUNE

JULY

AUG

SEPT

OCT

NOV

DEC

1945

A Number of Blank Pages

Follow which have not

been Photographed.

1951-2

181

10

394	69. -	440
381	53.5	450
332	61.5	452
334	59.5	454
335	60. -	454
339	48.5	454
340	53. -	458
343	55. -	461
354	56.5	463
375	54. -	465
376	57.2	467
377	47.5	469
378	44.5	470
381	63. -	471
382	46. -	472
383	55. -	473
388	55. -	478
389	55.5	479
398	50.5	484
403	50.1	492
		493

60

昭和18年1月石佛農作業賃金支給明細書

WORKING PAY

MONTH JANUARY

番号 NO	前月繰入金 BALANCE DRT/FWD	1-10 日	11-20 日	21-31 日	合計 TOTAL	タバコ CIGARETTE	繰越 BALANCE
658		3	7	7			175
659		4	7	8			190
660		5	4	7			160
661		4	8	7			195
662		4	7	7			185
663		-	4	-			40
664		2	5	6			135
665		-	1	-			10
666		5	4	7			165
667		4	8	6			185
668							
669		3	7	6			160
670							
671		3	8	8			190
672							
673		1	-	4			50
674							
675		3	6	6			155
676		3	6	-			90
677							
678		4	2	-			60
679		-	4	6			100
680		3	6	1			100
681		3	1	-			40
682							
683		3	-	-			30
684		1	-	2			30
685		5	8	4			170
686		4	8	5			170
687		5	7	5			170
688		4	6	6			160
689		4	9	7			205
690		4	8	7			195

Weights 28/6/45

Average 55.
Nearest 68.5
Lightest 41.
Woolf
Newton

33	50.-	412	56.5	499	55.-
40	54.-	413	48.0	504	59.3
41	49.8	414	52.-	505	52.-
46	62.-	415	61.-	506	52.-
90	51.1	418	60.-	507	58.-
97	55.1	420	57.-	511	55.5
115	64.2	422	52.-	518	55.-
122	54.5	427	50.6	519	51.-
149	51.5	430	55.5	520	59.6
155	59.-	432	53.5	522	56.5
194	51.-	437	44.5	525	53.5
200	62.5	442	50.-	530	61.5
216	56.2	444	51.-	532	57.3
300	44.5	445	44.4	535	46.1
310	52.-	447	54.5	526	49.5
324	62.-	449	53.2	542	68.5
331	53.5	450	58.2	545	65.0
332	61.5	452	49.1	547	41.6
334	59.5	454	41.-	555	67.-
335	60.-	457	53.5	562	52.3
339	48.5	458	49.-	565	48.7
340	53.-	461	45.4	569	53.5
343	55.-	463	55.2	581	59.5
354	56.5	465	56.5	587	56.5
375	54.-	467	68.-	598	59.-
376	57.2	469	56.-	603	52.5
377	47.5	470	55.1	606	58.-
378	44.5	471	55.-	618	59.5
381	63.-	472	56.4		
382	46.-	473	57.-	550	60.-
383	55.-	478	49.8	539	49.8
388	55.-	479	58.5		
389	55.5	489	57.-		
398	50.5	492	54.-		
403	50.1	493	60.-		

179
1674.2
1878.4
1951.2
5503.8

1951.2

1878.4

5504

CH

314
~~365~~
~~667~~
~~679~~
713
716
~~770~~

1760