

**M0009149: Section made from the liver of a syphilitic foetus**

**Publication/Creation**

27 April 1945

**Persistent URL**

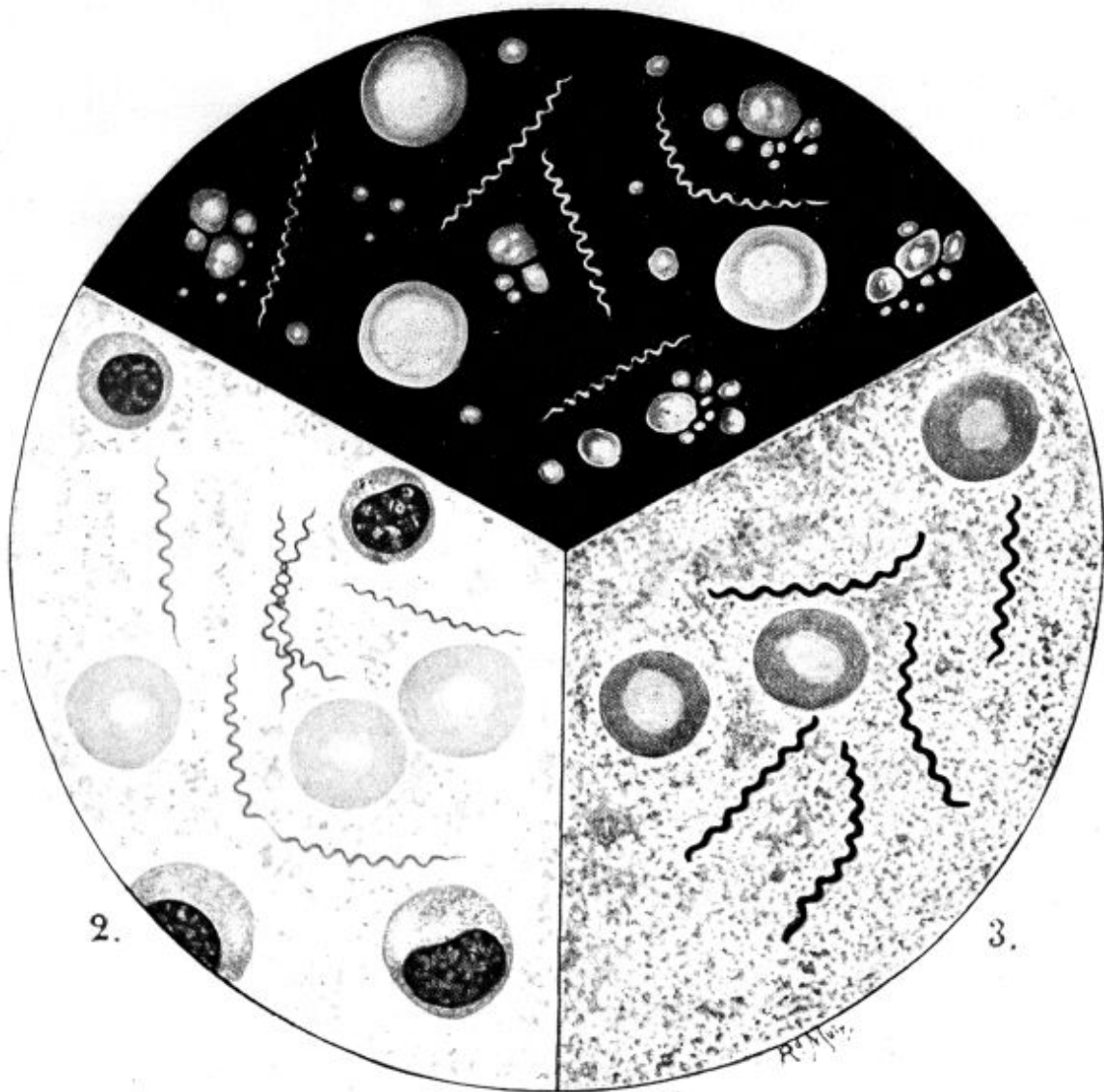
<https://wellcomecollection.org/works/ppuaunw9>

**License and attribution**

Conditions of use: it is possible this item is protected by copyright and/or related rights. You are free to use this item in any way that is permitted by the copyright and related rights legislation that applies to your use. For other uses you need to obtain permission from the rights-holder(s).



Wellcome Collection  
183 Euston Road  
London NW1 2BE UK  
T +44 (0)20 7611 8722  
E [library@wellcomecollection.org](mailto:library@wellcomecollection.org)  
<https://wellcomecollection.org>



Spirochoeta pallida (*Treponema pallidum*)

The causative organism of Syphilis. Found in large numbers in the primary chancre and later in skin lesions mucous patches gummata, and in vascular and cerebral lesions. In Congenital Syphilis spirochoetes are found in enormous numbers in certain organs of the infected foetus.

1. Shows the spirochoetes in the exudate derived from the primary sore when viewed by dark ground illumination.
2. Film from a chancre.
3. Film differently stained.