

**M0009182: WHMM display item: anatomical eye by Giovanni Battista Verle
of Venice**

Publication/Creation

17 August 1945

Persistent URL

<https://wellcomecollection.org/works/pnsjwjde>

License and attribution

Conditions of use: it is possible this item is protected by copyright and/or related rights. You are free to use this item in any way that is permitted by the copyright and related rights legislation that applies to your use. For other uses you need to obtain permission from the rights-holder(s).



Wellcome Collection
183 Euston Road
London NW1 2BE UK
T +44 (0)20 7611 8722
E library@wellcomecollection.org
<https://wellcomecollection.org>

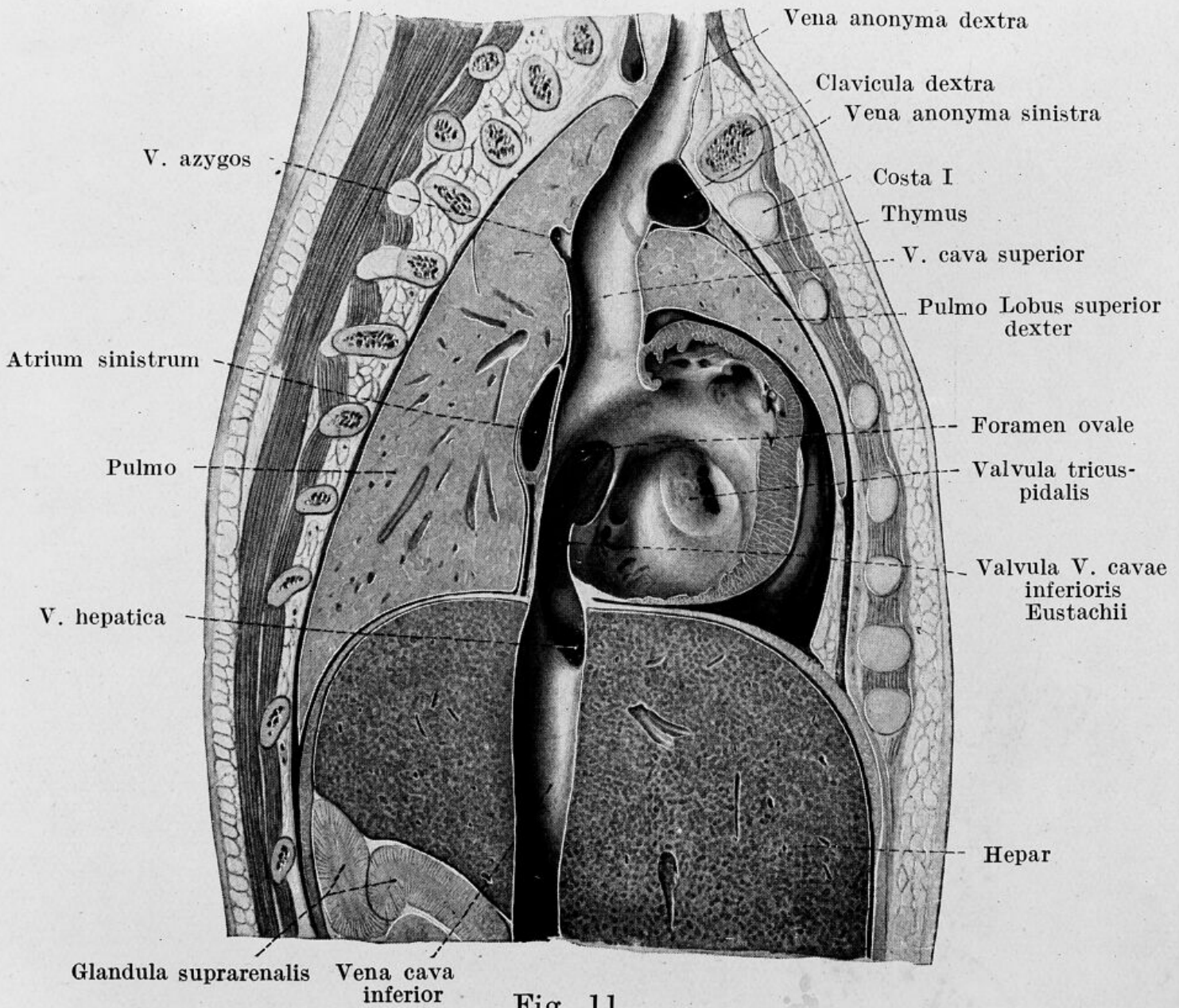


Fig. 11.

Sagittalschnitt in der Ebene der V. cava inferior durch den Thorax eines nicht geatmeten Kindes. Lateralansicht von rechts. Nat. Gr. Mündung der Hohlvenen, Ostium atrio-ventriculare dextrum, Foramen ovale.