

M0009183: WHMM display of artificial eyes

Publication/Creation

17 August 1945

Persistent URL

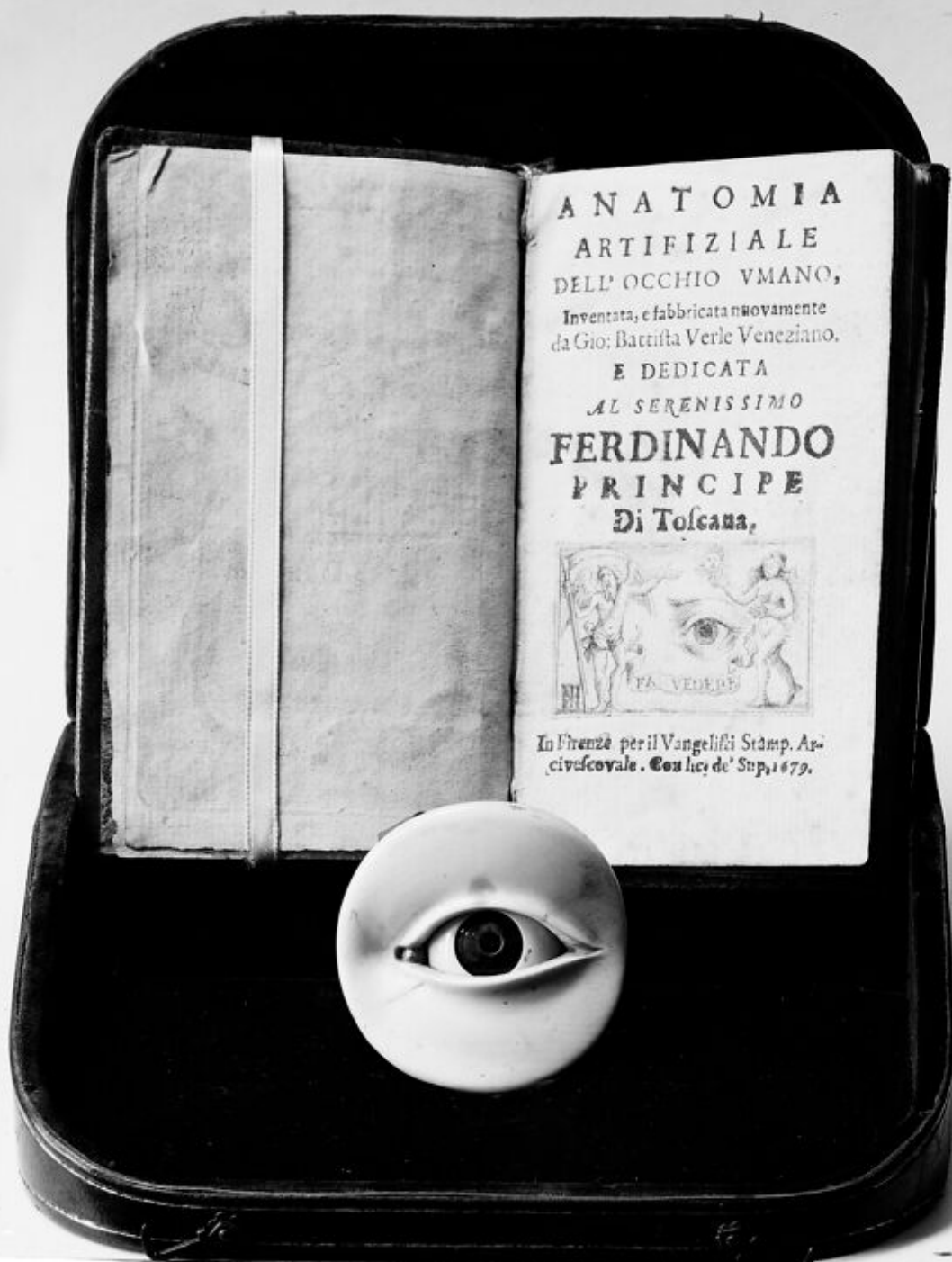
<https://wellcomecollection.org/works/u42p6nfg>

License and attribution

Conditions of use: it is possible this item is protected by copyright and/or related rights. You are free to use this item in any way that is permitted by the copyright and related rights legislation that applies to your use. For other uses you need to obtain permission from the rights-holder(s).



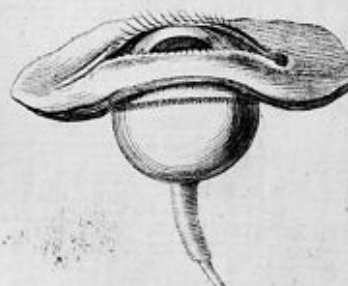
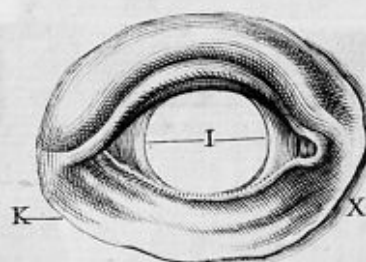
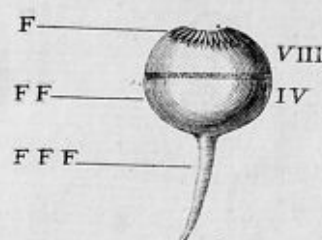
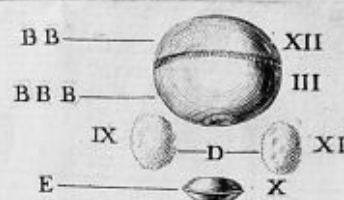
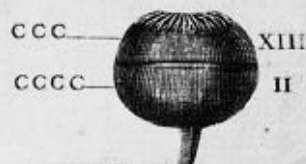
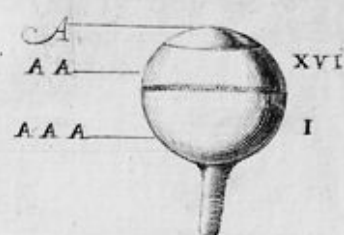
Wellcome Collection
183 Euston Road
London NW1 2BE UK
T +44 (0)20 7611 8722
E library@wellcomecollection.org
<https://wellcomecollection.org>



ANATOMIA
ARTIFIZIALE
DELL' OCCHIO VMANO,
Inventata, e fabbricata nuovamente
da Gio: Battista Verle Veneziano.
E DEDICATA
AL SERENISSIMO
FERDINANDO
PRINCIPE
Di Toscana,



In Firenze per il Vangelisti Stamp. Ar.
civilecovale. Con lic. de' Sup. 1679.



An artificial eye made by Gio Battista Verle of Venice and presented by him to Cosmo III of Medicis. An anatomical model in ivory used for instruction in conjunction with the "Anatomia artificiale dell' occhio umano" by the same Gio Battista Verle, 1679.