

**M0009190: Torso of male, showing organs, muscles, veins and arteries,  
from Eustachi: Explicatio tabularum anatomicarum, 1744**

**Publication/Creation**

17 August 1945

**Persistent URL**

<https://wellcomecollection.org/works/ddfjsepx>

**License and attribution**

This work has been identified as being free of known restrictions under copyright law, including all related and neighbouring rights and is being made available under the Creative Commons, Public Domain Mark.

You can copy, modify, distribute and perform the work, even for commercial purposes, without asking permission.



Wellcome Collection  
183 Euston Road  
London NW1 2BE UK  
T +44 (0)20 7611 8722  
E [library@wellcomecollection.org](mailto:library@wellcomecollection.org)  
<https://wellcomecollection.org>

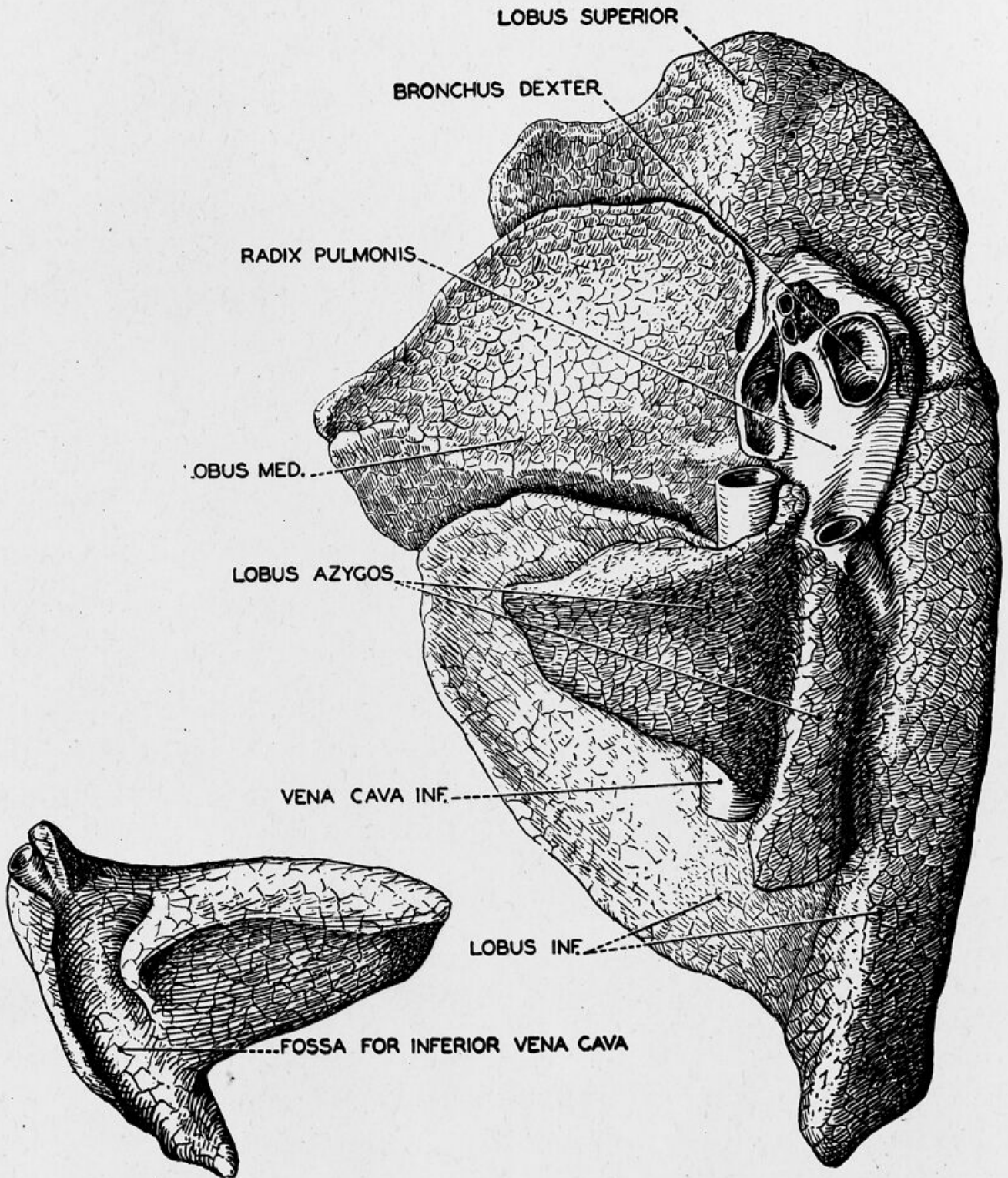


FIG. 62. Right lung, posterior surface. The insert shows the azygos lobe alone.