

M0009147: Ducrey's bacillus

Publication/Creation

27 April 1945

Persistent URL

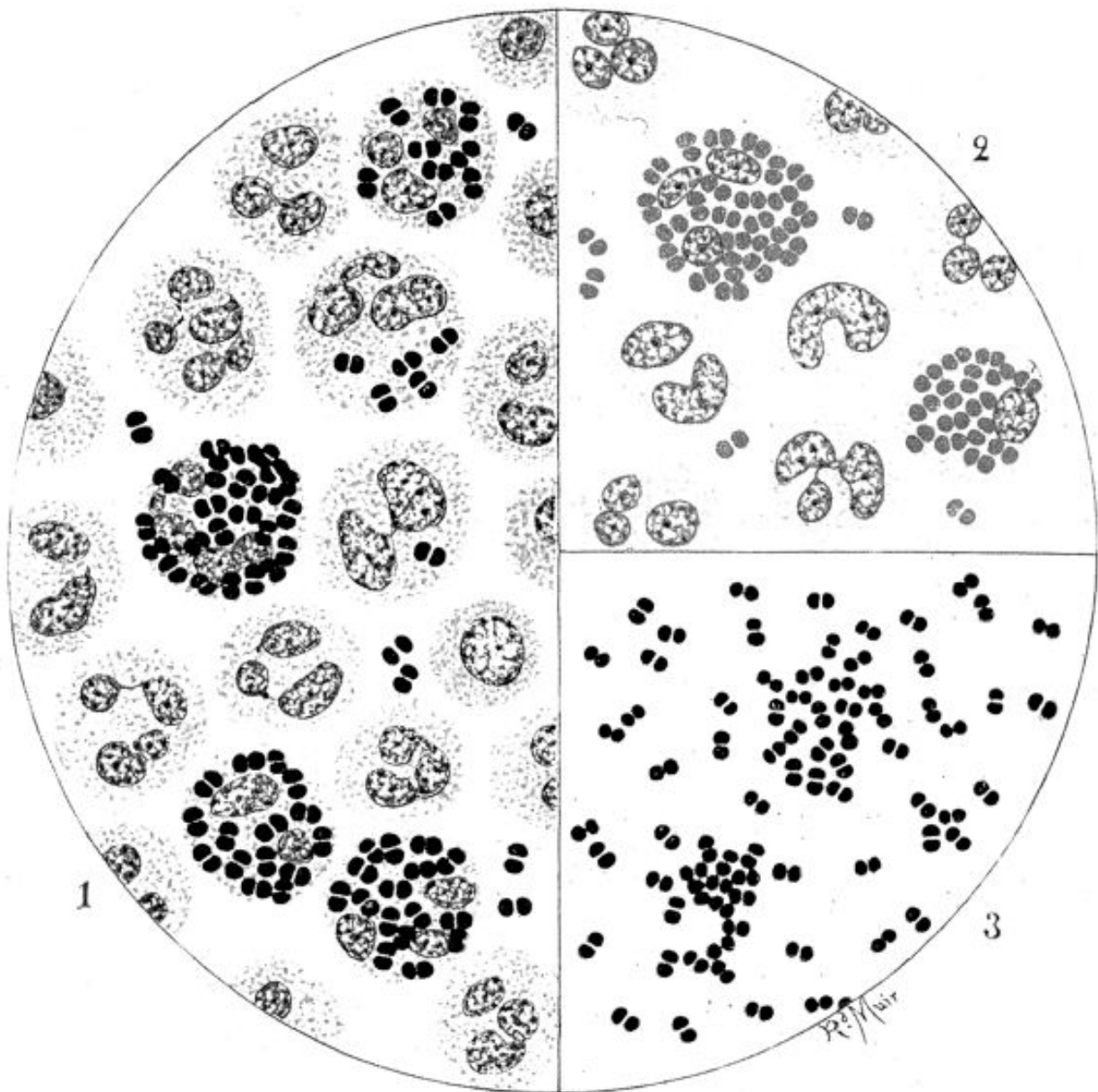
<https://wellcomecollection.org/works/zgc42cfh>

License and attribution

Conditions of use: it is possible this item is protected by copyright and/or related rights. You are free to use this item in any way that is permitted by the copyright and related rights legislation that applies to your use. For other uses you need to obtain permission from the rights-holder(s).

**wellcome
collection**

Wellcome Collection
183 Euston Road
London NW1 2BE UK
T +44 (0)20 7611 8722
E library@wellcomecollection.org
<https://wellcomecollection.org>



The Gonococcus (*Neisseria gonorrhoeae*)

The causative organism of Gonorrhoea. Usually affects the male urethra as well as the genito-urinary tract of the female subject.

1. A film of pus, stained eosin and methylene blue, showing numerous gonococci within the polymorphonuclear leucocytes.
2. The preparation stained to show the intracellular position of the organisms.
3. Film made from a pure culture of the gonococcus showing diplococci.