

## **M0006788: Illustration of Cynognathus Crateronotus skull**

### **Publication/Creation**

16 April 1940

### **Persistent URL**

<https://wellcomecollection.org/works/ahp447tj>

### **License and attribution**

Wellcome Library; GB.

Conditions of use: it is possible this item is protected by copyright and/or related rights. You are free to use this item in any way that is permitted by the copyright and related rights legislation that applies to your use. For other uses you need to obtain permission from the rights-holder(s).

**wellcome  
collection**

Wellcome Collection  
183 Euston Road  
London NW1 2BE UK  
T +44 (0)20 7611 8722  
E [library@wellcomecollection.org](mailto:library@wellcomecollection.org)  
<https://wellcomecollection.org>

The following known from imperfect remains from the Permian of Russia are probably *Theriodontia*; *Deuterosaurus* Eichw., *Rhopalodon* Fischer, with lanceolate molars and sclerotic ring.

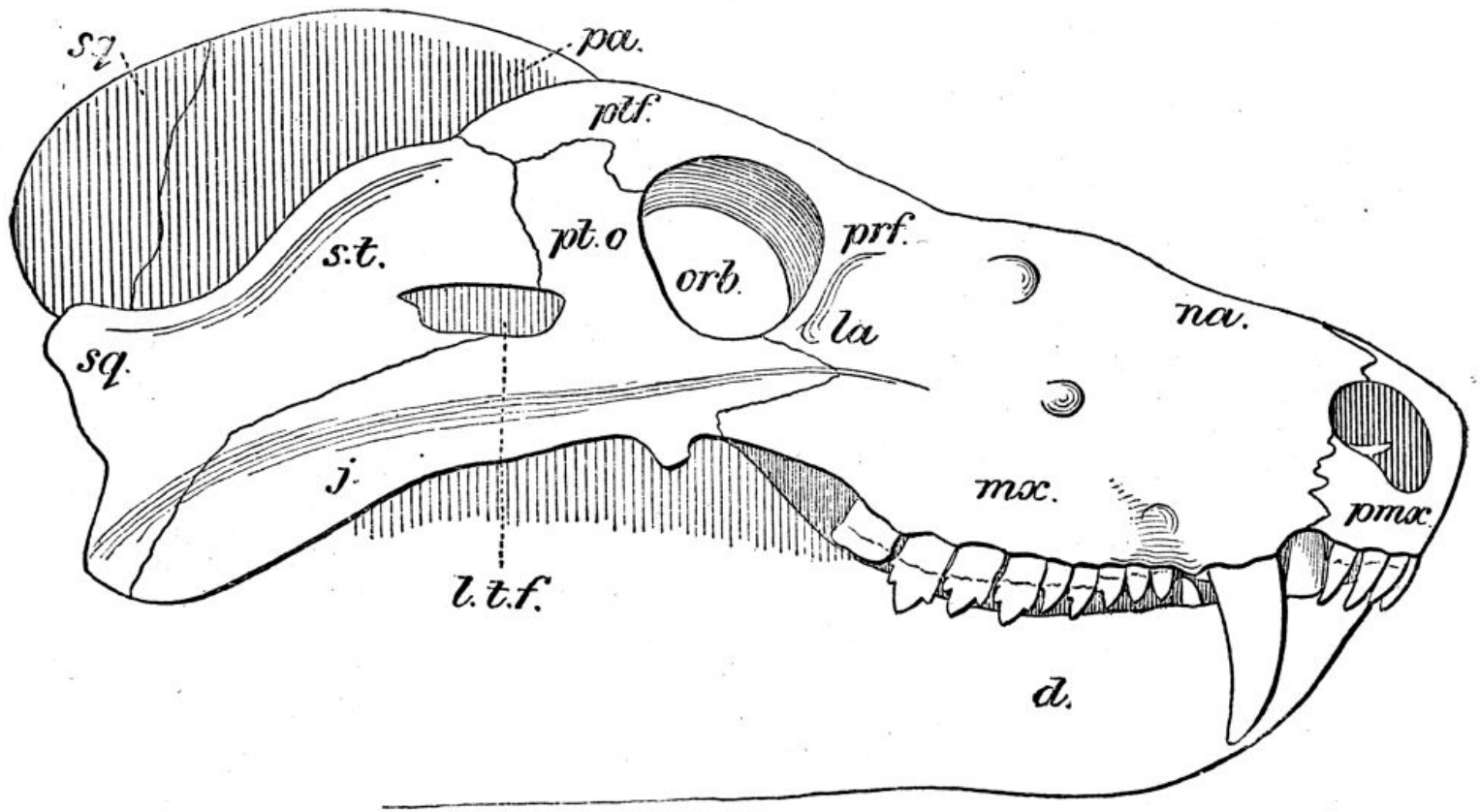


FIG. 222.—*Cynognathus crateronotus*, right side of skull with imperfect mandible (after Woodward slightly restored). The molars possibly project further than in life and the crown of the last is broken. *d* dentary; *j* jugal; *l.t.f.* small lateral temporal vacuity; *la* lacrymal; *mx* maxilla; *na* nasal; *orb* orbit; *pa* parietal; *pmx* premaxilla; *prf* prefrontal; *pto* postorbital; *ptf* postfrontal; *st* supratemporal; *sq* squamosal.