

M0006391: Wellcome Historical Medical Museum display: drawings of birth postures from South and West Africa

Publication/Creation

12 October 1939

Persistent URL

<https://wellcomecollection.org/works/nngwhu4a>

License and attribution

Wellcome Library; GB.

Conditions of use: it is possible this item is protected by copyright and/or related rights. You are free to use this item in any way that is permitted by the copyright and related rights legislation that applies to your use. For other uses you need to obtain permission from the rights-holder(s).

**wellcome
collection**

Wellcome Collection
183 Euston Road
London NW1 2BE UK
T +44 (0)20 7611 8722
E library@wellcomecollection.org
<https://wellcomecollection.org>

SOUTH AND WEST AFRICA

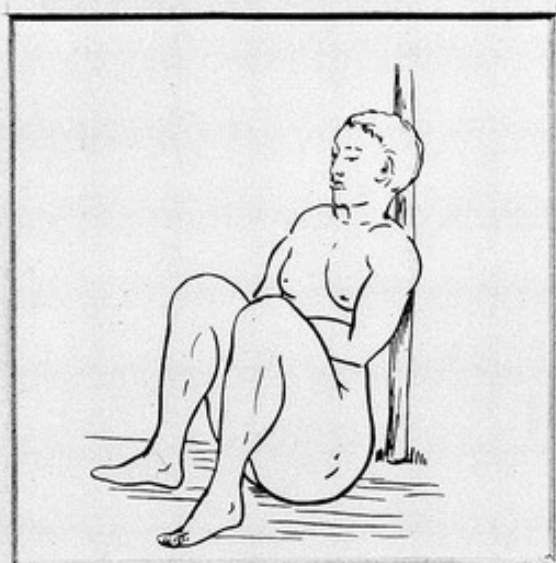


DIFFICULT LABOUR

RESTRAINT OF BREATHING AND MOVEMENT TO INDUCE THE PATIENT TO STRUGGLE AND SO BRING ON DELIVERY.

LOANGO, W. AFRICA.

Witkowski. Histoire des Accouchements. p. 418.



SITTING POSTURE

A STICK GIVING SUPPORT

KAFFIR, S. AFRICA

After Engelmann (Hovorka and Kronfeld, Vergleichende Volksmedizin.) p. 557.



PRONE POSITION

ASSISTANT APPLYING PRESSURE IN PROLONGED LABOUR.

LOANGO, W. AFRICA

Witkowski. Histoire des Accouchements. p. 415.