

M0006388: Wellcome Historical Medical Museum display: drawings of birth postures from Melanesia and Polynesia

Publication/Creation

12 October 1939

Persistent URL

<https://wellcomecollection.org/works/f9uqm624>

License and attribution

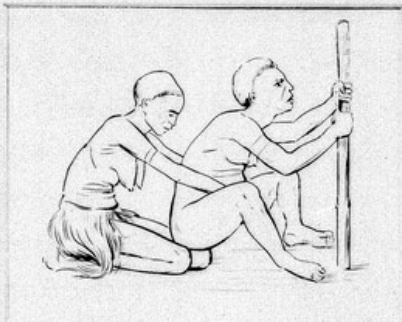
Wellcome Library; GB.

Conditions of use: it is possible this item is protected by copyright and/or related rights. You are free to use this item in any way that is permitted by the copyright and related rights legislation that applies to your use. For other uses you need to obtain permission from the rights-holder(s).

**wellcome
collection**

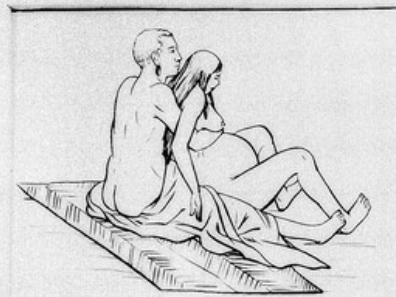
Wellcome Collection
183 Euston Road
London NW1 2BE UK
T +44 (0)20 7611 8722
E library@wellcomecollection.org
<https://wellcomecollection.org>

MELANESIA AND POLYNESIA



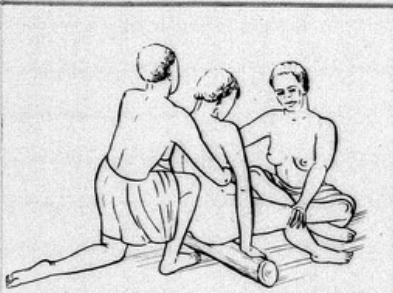
SQUATTING POSTURE
 A STAKE GIVING SUPPORT, AND AN ASSISTANT APPLYING PRESSURE
 SINAUGOLO, BRITISH NEW GUINEA

Reproduced from "The Body and Mind of the Primitive Man" by H. H. S. 1907



SITTING POSTURE
 HUSBAND GIVING SUPPORT AND APPLYING PRESSURE
 TAHITI

Reproduced from "The Body and Mind of the Primitive Man" by H. H. S. 1907



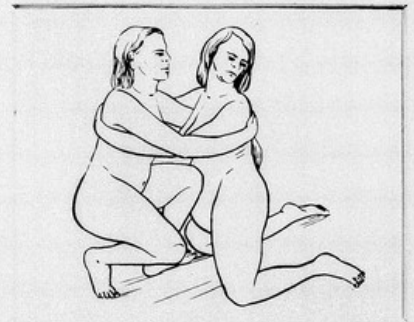
SITTING POSTURE
 ASSISTANT SUPPORTING AND APPLYING PRESSURE
 BUKA, SOLOMON ISLANDS

From "The Body and Mind of the Primitive Man" by H. H. S. 1907



SITTING POSTURE
 ASSISTANT SUPPORTING AND APPLYING PRESSURE
 AUSTRALIA

From "The Body and Mind of the Primitive Man" by H. H. S. 1907



KNEELING POSTURE
 ASSISTANT APPLYING PRESSURE WITH HER KNEE
 MAORI, NEW ZEALAND

From "The Body and Mind of the Primitive Man" by H. H. S. 1907