

## **M0007235: Manuscript illustrations of foetus in utero**

### **Publication/Creation**

6 September 1940

### **Persistent URL**

<https://wellcomecollection.org/works/ba2f4j7y>

### **License and attribution**

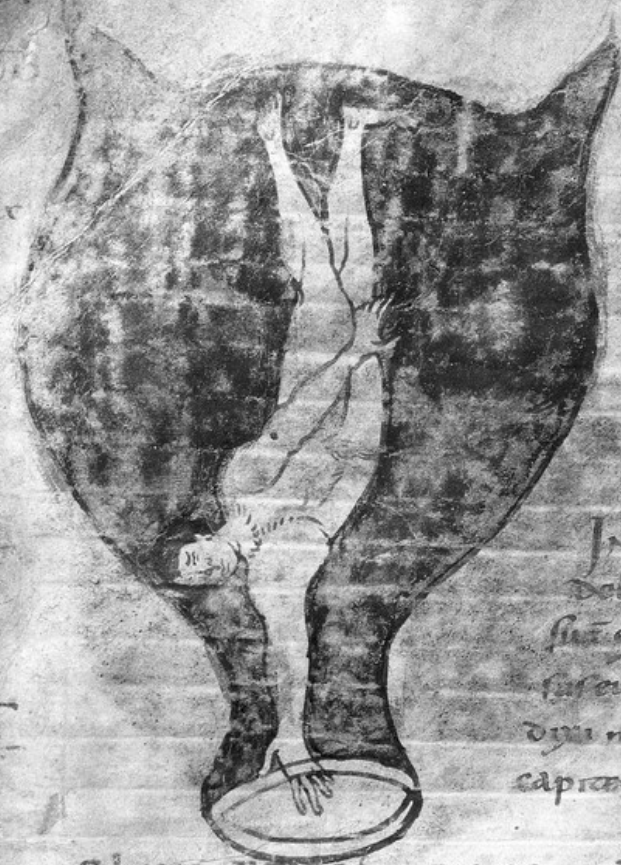
Wellcome Library; GB.

This work has been identified as being free of known restrictions under copyright law, including all related and neighbouring rights and is being made available under the Creative Commons, Public Domain Mark.

You can copy, modify, distribute and perform the work, even for commercial purposes, without asking permission.



Wellcome Collection  
183 Euston Road  
London NW1 2BE UK  
T +44 (0)20 7611 8722  
E [library@wellcomecollection.org](mailto:library@wellcomecollection.org)  
<https://wellcomecollection.org>



CLIII  
SICUT BAS  
MANUS EI TORIS  
Inuenit quid facere  
Debet et duob; homeris et manu  
sua ex utraq; inficiens ne pro-  
prietate ei reuocet & sicut superius  
dixi manib; compositis adprehensio  
capituli paulatim & leuiter eum foris adducat. *figura 17a.*



CLIM ET SUBRECUSSIONE  
caput habeat & ambas manus foris  
eicerit oportet & obsecro <sup>prope</sup> prius <sup>ita</sup> missa  
manus <sup>ita</sup> caput infanti ad orificiū cor-  
rigat & comprehensis manib; infans

CLV SIM PEDIB; DESCENDING.  
In aliqua parte uulvae reli cū corp;  
reli cū corp; inclinauerit quid facere debet  
sicuti <sup>utroq;</sup> ror sur dixi obstruere missa  
manū suā eum componat & sic adducat