

M0006661: Drawing of the ventral side of the skull of Eogyrinus Attheyi

Publication/Creation

27 March 1940

Persistent URL

<https://wellcomecollection.org/works/xr8yw8gf>

License and attribution

Wellcome Library; GB.

Conditions of use: it is possible this item is protected by copyright and/or related rights. You are free to use this item in any way that is permitted by the copyright and related rights legislation that applies to your use. For other uses you need to obtain permission from the rights-holder(s).



Wellcome Collection
183 Euston Road
London NW1 2BE UK
T +44 (0)20 7611 8722
E library@wellcomecollection.org
<https://wellcomecollection.org>

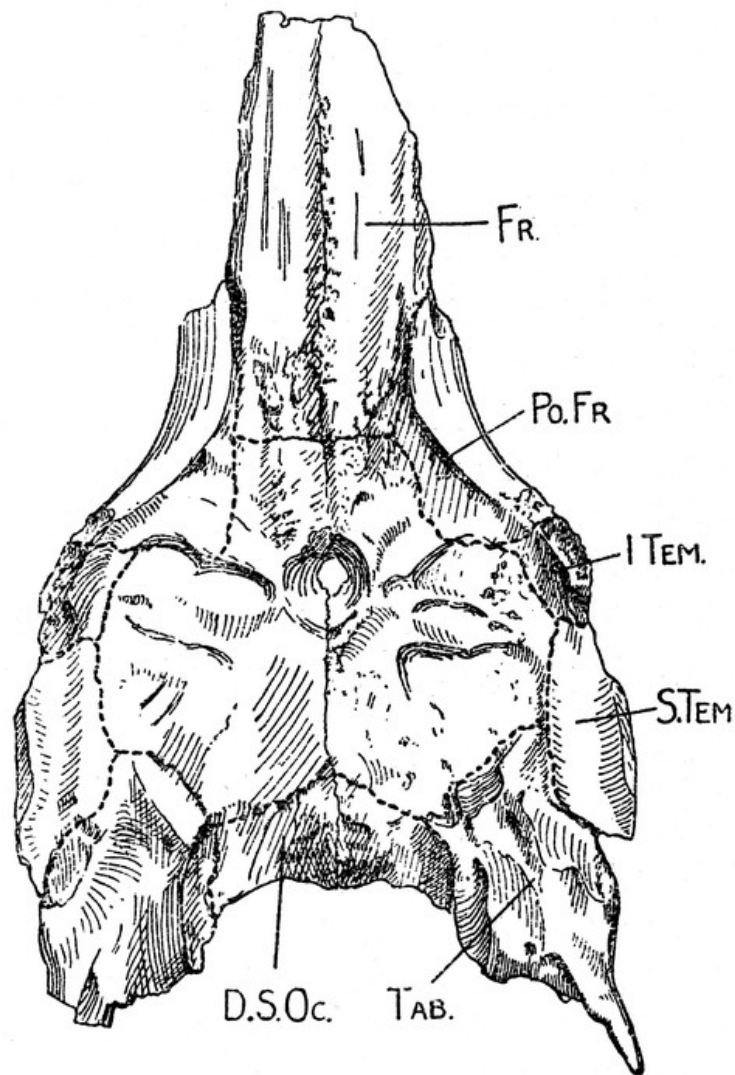


FIG. 19.—*Eogyrinus Attheyi*. The table of a skull viewed from the ventral side $\times \frac{2}{3}$. Newcastle Museum, No. D.M.S.W. 35. The reference line S. Tem. ends in the middle of the wide, smooth groove of the supratemporal, with which the upper border of the squamosal formerly articulated.