

M0006018: Brachiopods.

Publication/Creation

12 January 1939

Persistent URL

<https://wellcomecollection.org/works/zbmmwx9s>

License and attribution

Wellcome Library; GB.

Conditions of use: it is possible this item is protected by copyright and/or related rights. You are free to use this item in any way that is permitted by the copyright and related rights legislation that applies to your use. For other uses you need to obtain permission from the rights-holder(s).

**wellcome
collection**

Wellcome Collection
183 Euston Road
London NW1 2BE UK
T +44 (0)20 7611 8722
E library@wellcomecollection.org
<https://wellcomecollection.org>

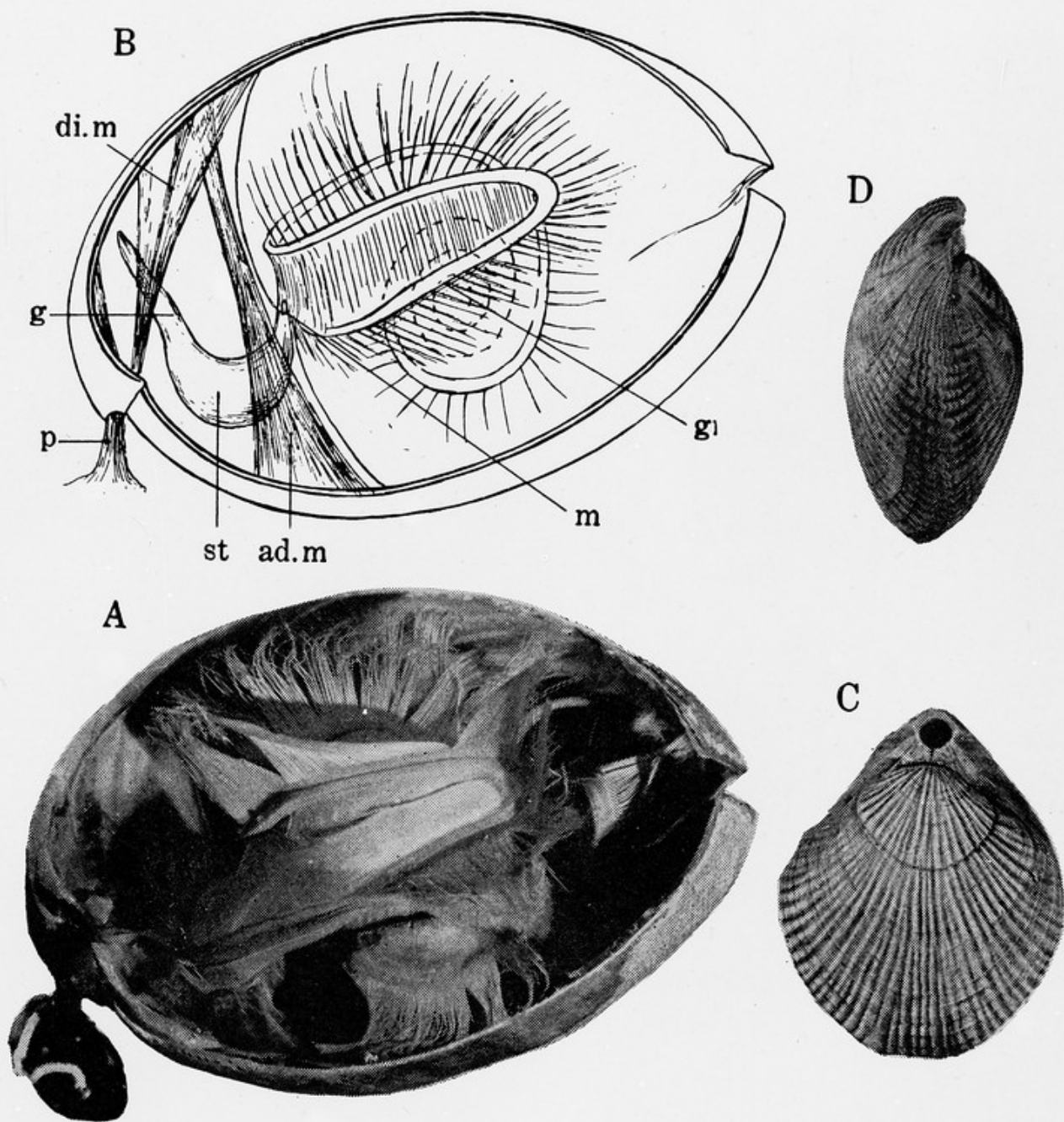


FIG. 25. — Brachiopods. *A*, living brachiopod in the position of growth, the near side cut away to show the relation of animal to shell. The chief structures of the animal are shown semidiagrammatically in *B*. Note that the body (left) is very short, the anterior two-thirds of the shell housing only the coiled and plumose gills (*gi*). The peduncle (*p*) emerges through a foramen at the posterior end of the shell. The mouth (*m*) leads to a simple digestive system indistinctly divisible into stomach (*st*) and gut (*g*). Two sets of long muscles run through the body, the closing ones (*ad. m.*) being opposed by those that open the shell (*di. m.*). *C* and *D*, lateral views of the shell of another living brachiopod, showing the opening for the peduncle and the relation of the two valves. Peabody Museum, Yale University.