

**M0006041: Diagram of the limb of a primitive land animal / M0006041EB:
Diagram of a crossopterygian fin M0006041EC**

Publication/Creation

20 January 1939

Persistent URL

<https://wellcomecollection.org/works/arwr684q>

License and attribution

Wellcome Library; GB.

Conditions of use: it is possible this item is protected by copyright and/or related rights. You are free to use this item in any way that is permitted by the copyright and related rights legislation that applies to your use. For other uses you need to obtain permission from the rights-holder(s).

**wellcome
collection**

Wellcome Collection
183 Euston Road
London NW1 2BE UK
T +44 (0)20 7611 8722
E library@wellcomecollection.org
<https://wellcomecollection.org>

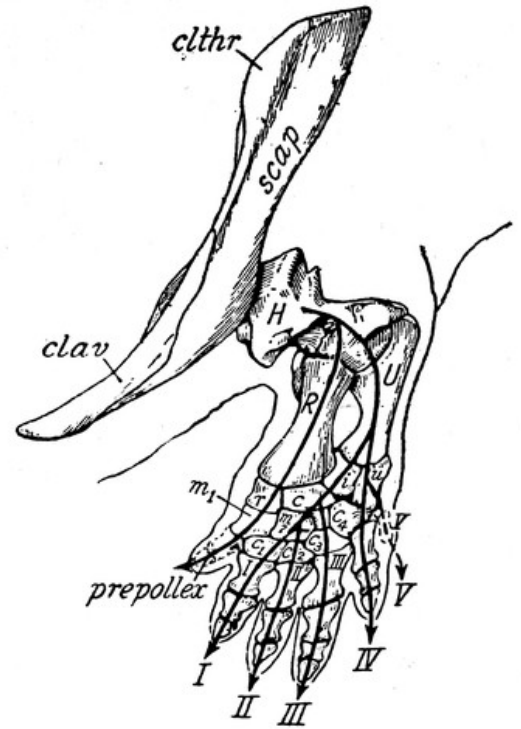
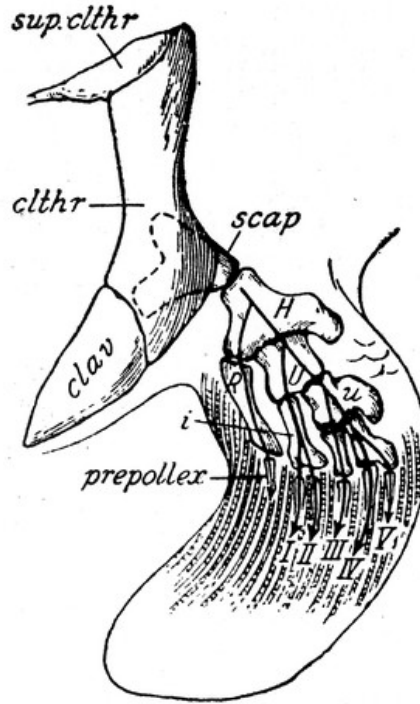
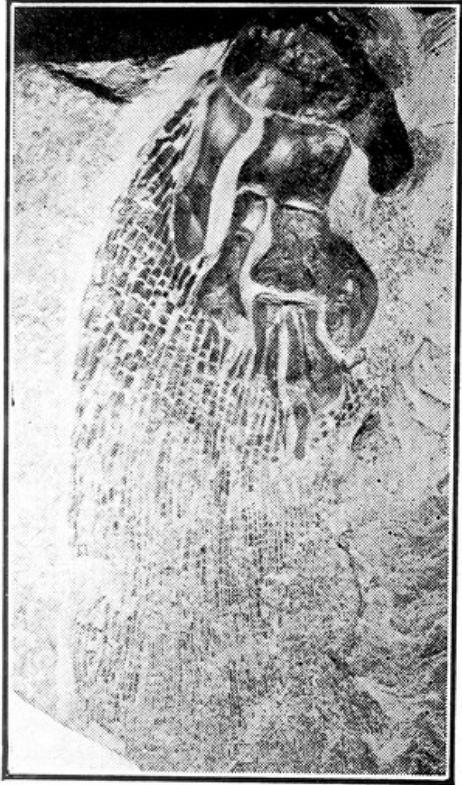


Fig. 104. — Resemblances between a crossopterygian fin and the limb of a primitive land animal. At the left, an unretouched photograph of the left front fin of *Eusthenopteron foordi* from the Upper Devonian at Scaumenac, Quebec; center, a diagram of the elements in the corresponding left fin; right, the limb of a late Paleozoic amphibian, *Eryops*. Photograph from W. H. Bryant, Buffalo Museum of Science. Diagram after W. K. Gregory.

sup. clthr

clthr

scap

clav

H

U

i

prepollex

I *II* *III* *IV* *V*

