

## **M0006040: A primitive fish (*Pharyngolepis oblongus*)**

### **Publication/Creation**

14 January 1939

### **Persistent URL**

<https://wellcomecollection.org/works/anxfs3ep>

### **License and attribution**

Wellcome Library; GB.

Conditions of use: it is possible this item is protected by copyright and/or related rights. You are free to use this item in any way that is permitted by the copyright and related rights legislation that applies to your use. For other uses you need to obtain permission from the rights-holder(s).

**wellcome  
collection**

Wellcome Collection  
183 Euston Road  
London NW1 2BE UK  
T +44 (0)20 7611 8722  
E [library@wellcomecollection.org](mailto:library@wellcomecollection.org)  
<https://wellcomecollection.org>

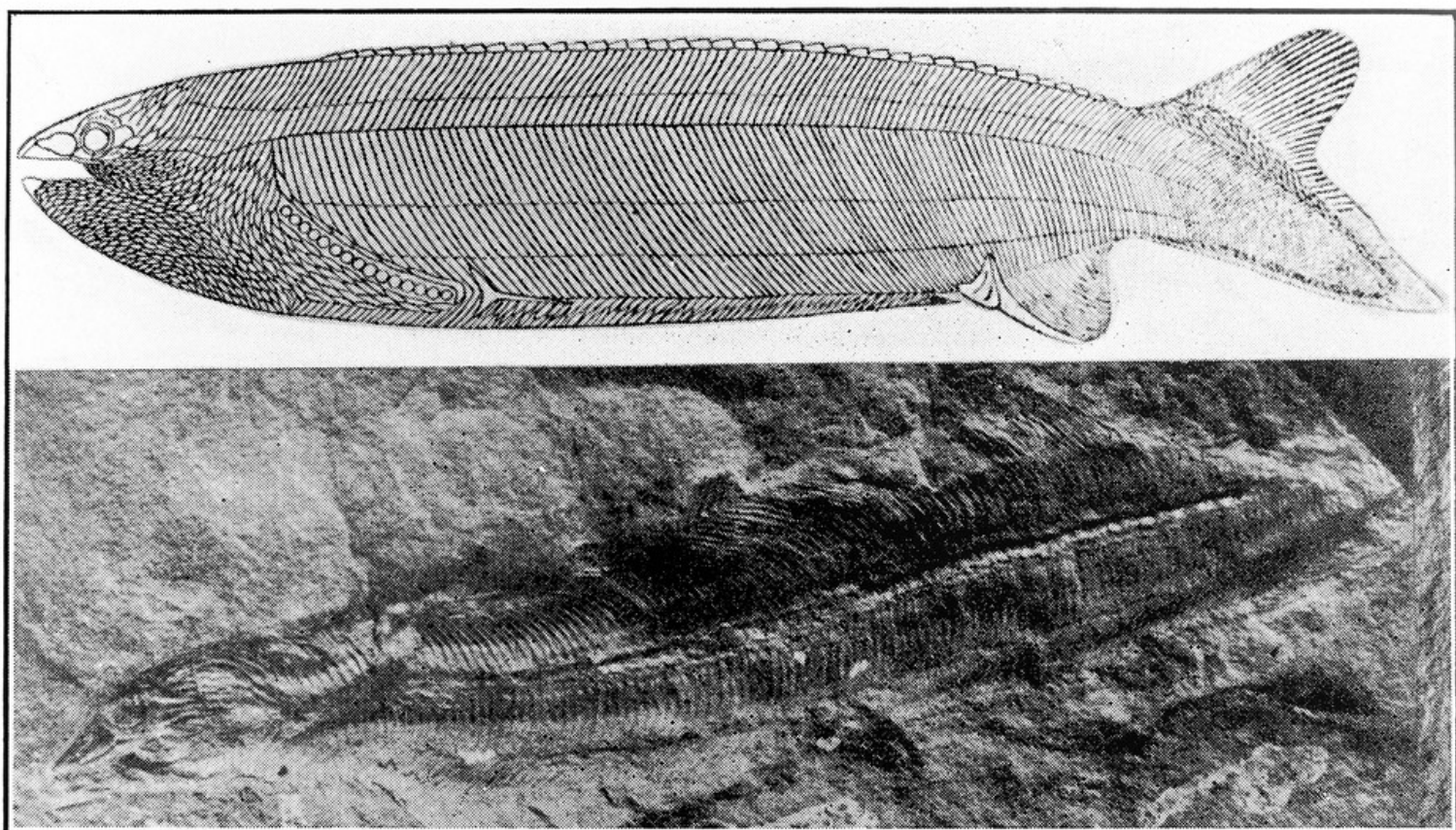


Fig. 102. — A primitive fish (*Pharyngolepis oblongus*) from the uppermost Silurian (Downtonian) of Norway,  $\times \frac{2}{3}$ . Above, a reconstruction, side view; below, a photograph of a specimen in the rock, dorsal view. After Kiaer.