

M0006039: Section of the North Wall of the Grand Canyon

Publication/Creation

14 January 1939

Persistent URL

<https://wellcomecollection.org/works/n5ntt7kq>

License and attribution

Wellcome Library; GB.

Conditions of use: it is possible this item is protected by copyright and/or related rights. You are free to use this item in any way that is permitted by the copyright and related rights legislation that applies to your use. For other uses you need to obtain permission from the rights-holder(s).



Wellcome Collection
183 Euston Road
London NW1 2BE UK
T +44 (0)20 7611 8722
E library@wellcomecollection.org
<https://wellcomecollection.org>

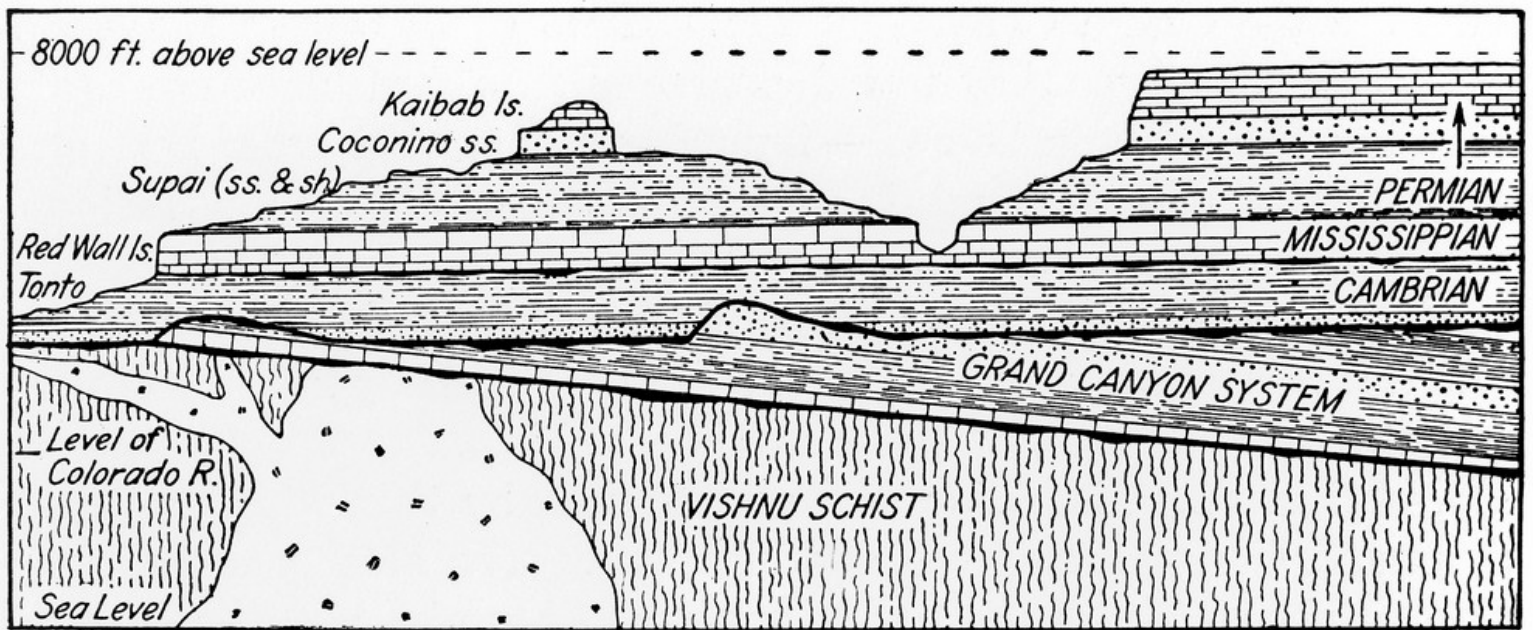


Fig. 25. — Section of the north wall of the Grand Canyon opposite El Tovar Hotel. Granite intrudes the Vishnu schist. The butte at the left is Buddha Temple. Adapted from Darton, U. S. Geol. Survey.