

M0004818: Portrait of Paul Ehrlich (1854-1915)

Publication/Creation

October 1936

Persistent URL

<https://wellcomecollection.org/works/nynmncjt>

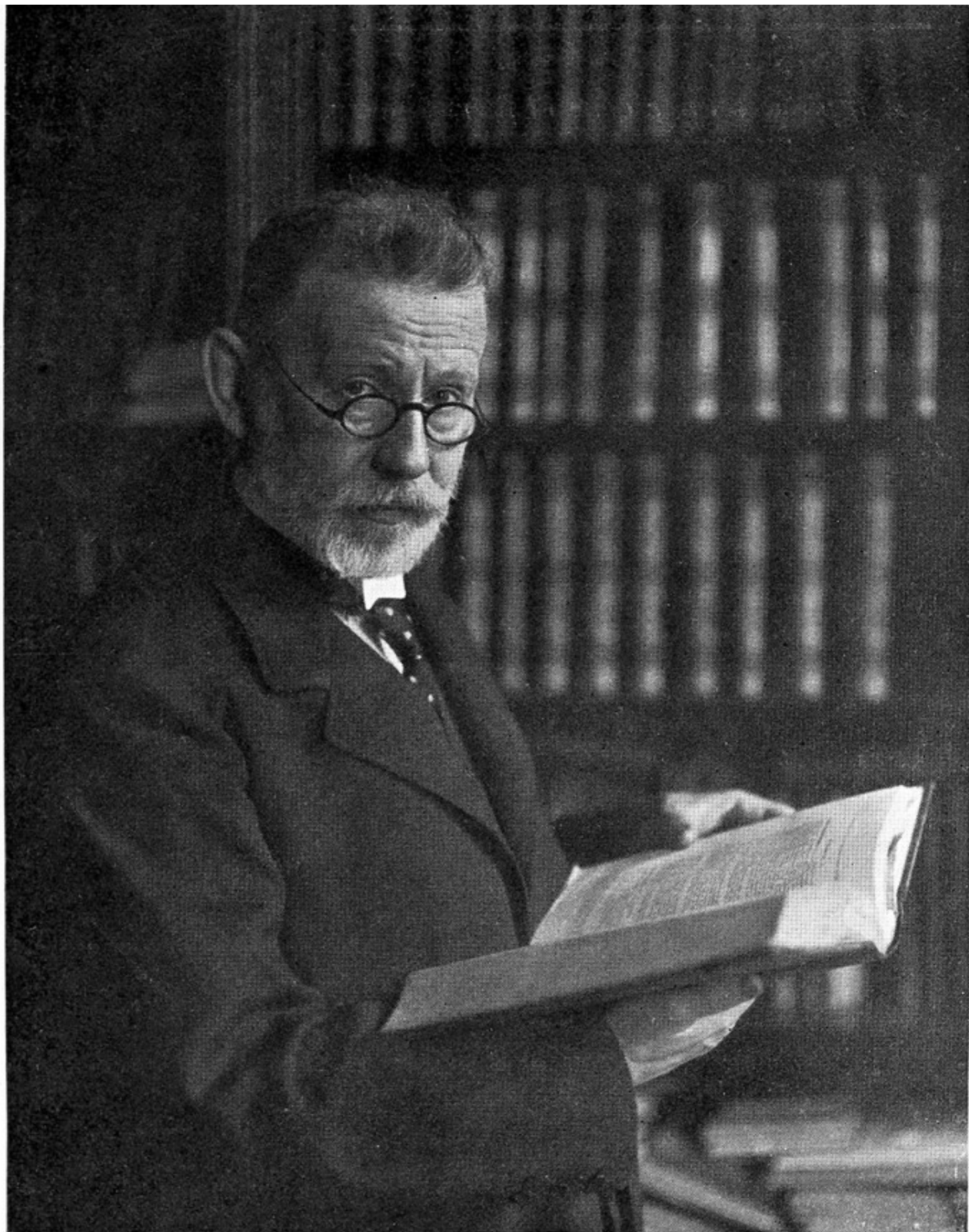
License and attribution

Wellcome Library; GB.

Conditions of use: it is possible this item is protected by copyright and/or related rights. You are free to use this item in any way that is permitted by the copyright and related rights legislation that applies to your use. For other uses you need to obtain permission from the rights-holder(s).

**wellcome
collection**

Wellcome Collection
183 Euston Road
London NW1 2BE UK
T +44 (0)20 7611 8722
E library@wellcomecollection.org
<https://wellcomecollection.org>



* 1854 **PROFESSEUR EHRLICH**

Conseiller supérieur médical intime,
Directeur de l'Institut Royal de Thérapeutique expérimentale,
et de l'Institut Georges Speyer, à Francfort-sur-Mein,
Professeur honoraire de l'Université de Göttingen.

*(Etude histologique et pathologique du sang, colorations vitales, colorations des nerfs,
études sur l'immunité, le cancer, les sérums, etc., etc.)*