

## **M0005014: Various types of museum display case**

### **Publication/Creation**

4 November 1936

### **Persistent URL**

<https://wellcomecollection.org/works/ndt7ghbf>

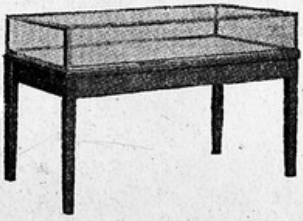
### **License and attribution**

Wellcome Library; GB.

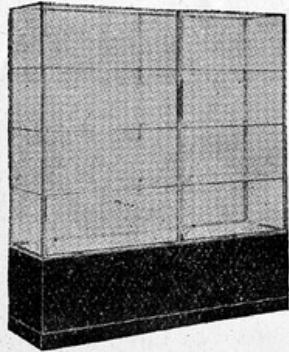
Conditions of use: it is possible this item is protected by copyright and/or related rights. You are free to use this item in any way that is permitted by the copyright and related rights legislation that applies to your use. For other uses you need to obtain permission from the rights-holder(s).



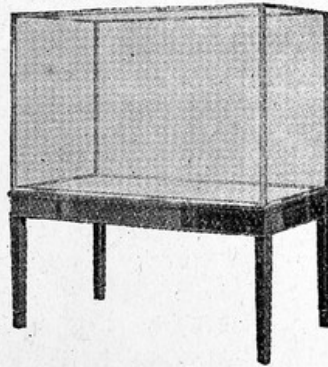
Wellcome Collection  
183 Euston Road  
London NW1 2BE UK  
T +44 (0)20 7611 8722  
E [library@wellcomecollection.org](mailto:library@wellcomecollection.org)  
<https://wellcomecollection.org>



**Table Cases.** Low and high styles, each equipped with hinged lid, two point lock and lid support.



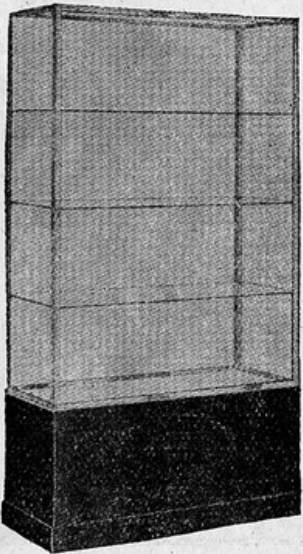
**Wall Case—Double Door.** Front panels hinged. Glass shelves supported by corner shelf brackets, adjustable every inch.



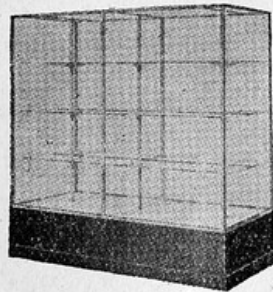
**Center Case—South Kensington Type.** End panels hinged. Dimensions which experience has proved most practical.



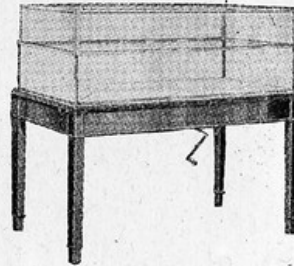
**Table Case—Double Faced Sloping Top.** Hinged lids, equipped with two point locks. Exhibition section 9" high at center, 6" high at sides.



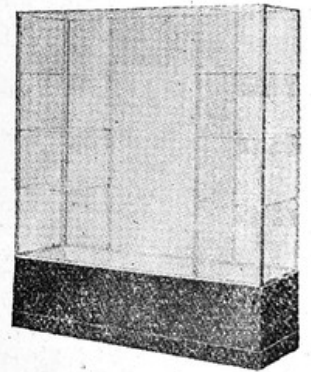
**Wall Case—Single Door.** Front Panel hinged, shelves adjustable every inch.



**Center Case.** Two hinged doors on each face. Glass shelves supported by arm brackets on center uprights, adjustable every inch.



**MacLean Type Elevating Exhibition Cases.** The turning of a crank, inserted in the base lifts and lowers.



**Wall Case—Fleming Design.** Center panel hinged. Glass shelves supported by corner shelf brackets, adjustable every inch.