

## **M0004274: Display case on optics**

### **Publication/Creation**

17 October 1935

### **Persistent URL**

<https://wellcomecollection.org/works/z38a24mh>

### **License and attribution**

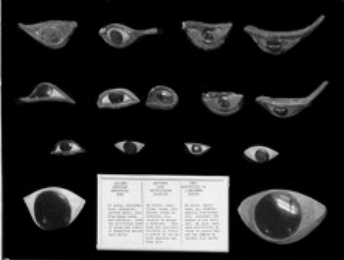
You have permission to make copies of this work under a Creative Commons, Attribution license.

This licence permits unrestricted use, distribution, and reproduction in any medium, provided the original author and source are credited. See the Legal Code for further information.

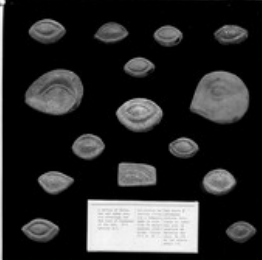
Image source should be attributed as specified in the full catalogue record. If no source is given the image should be attributed to Wellcome Collection.



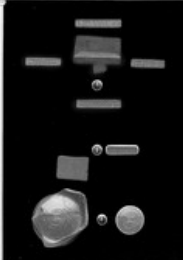
Wellcome Collection  
183 Euston Road  
London NW1 2BE UK  
T +44 (0)20 7611 8722  
E [library@wellcomecollection.org](mailto:library@wellcomecollection.org)  
<https://wellcomecollection.org>



Textual information, likely a description of the eye models or related scientific concepts.



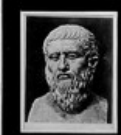
Textual information, likely a description of the eye models or related scientific concepts.



Textual information, likely a historical document or scientific treatise related to optics.



Textual information, likely a historical document or scientific treatise related to optics.



Textual information, likely a biographical note or description of the man.



Textual information, likely a biographical note or description of the man.



Textual information, likely a biographical note or description of the man.



Textual information, likely a biographical note or description of the man.



Textual information, likely a biographical note or description of the man.



Textual information, likely a biographical note or description of the man.



Textual information, likely a biographical note or description of the man.



Textual information, likely a biographical note or description of the man.



Textual information, likely a biographical note or description of the man.

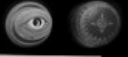


Textual information, likely a biographical note or description of the man.



Textual information, likely a biographical note or description of the man.

Textual information, likely a historical document or scientific treatise related to optics.



Textual information, likely a historical document or scientific treatise related to optics.