

## **M0003523: Factory ambulance building and room**

### **Publication/Creation**

4 July 1933

### **Persistent URL**

<https://wellcomecollection.org/works/mah35aqz>

### **License and attribution**

Conditions of use: it is possible this item is protected by copyright and/or related rights. You are free to use this item in any way that is permitted by the copyright and related rights legislation that applies to your use. For other uses you need to obtain permission from the rights-holder(s).

**wellcome  
collection**

Wellcome Collection  
183 Euston Road  
London NW1 2BE UK  
T +44 (0)20 7611 8722  
E [library@wellcomecollection.org](mailto:library@wellcomecollection.org)  
<https://wellcomecollection.org>

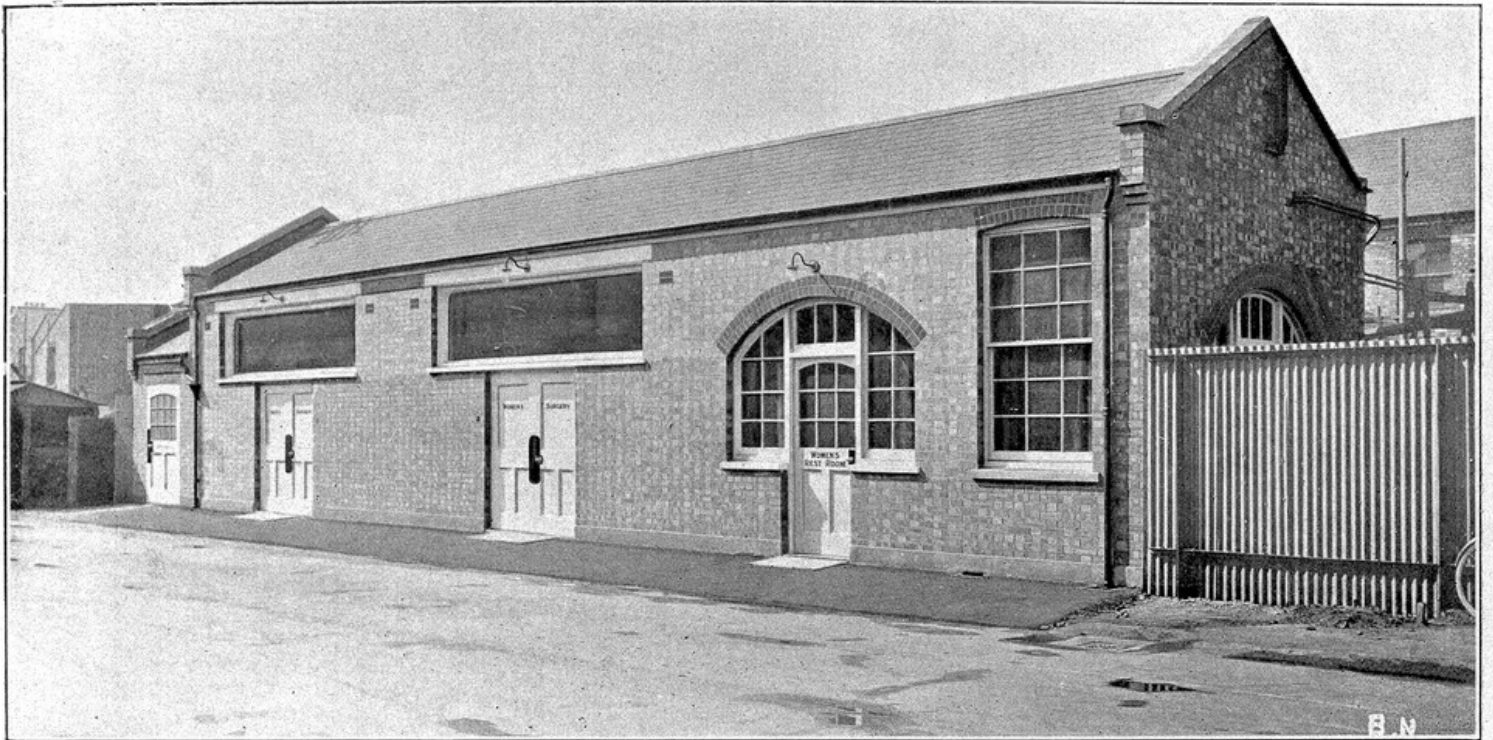


PLATE VI.—Ambulance Room built on main roadway in centre of works. Note easy access and double doors to Ambulance Room for stretcher cases ; also plate glass lights above the doors. The excellent lighting obtained is shown in PLATE VII.

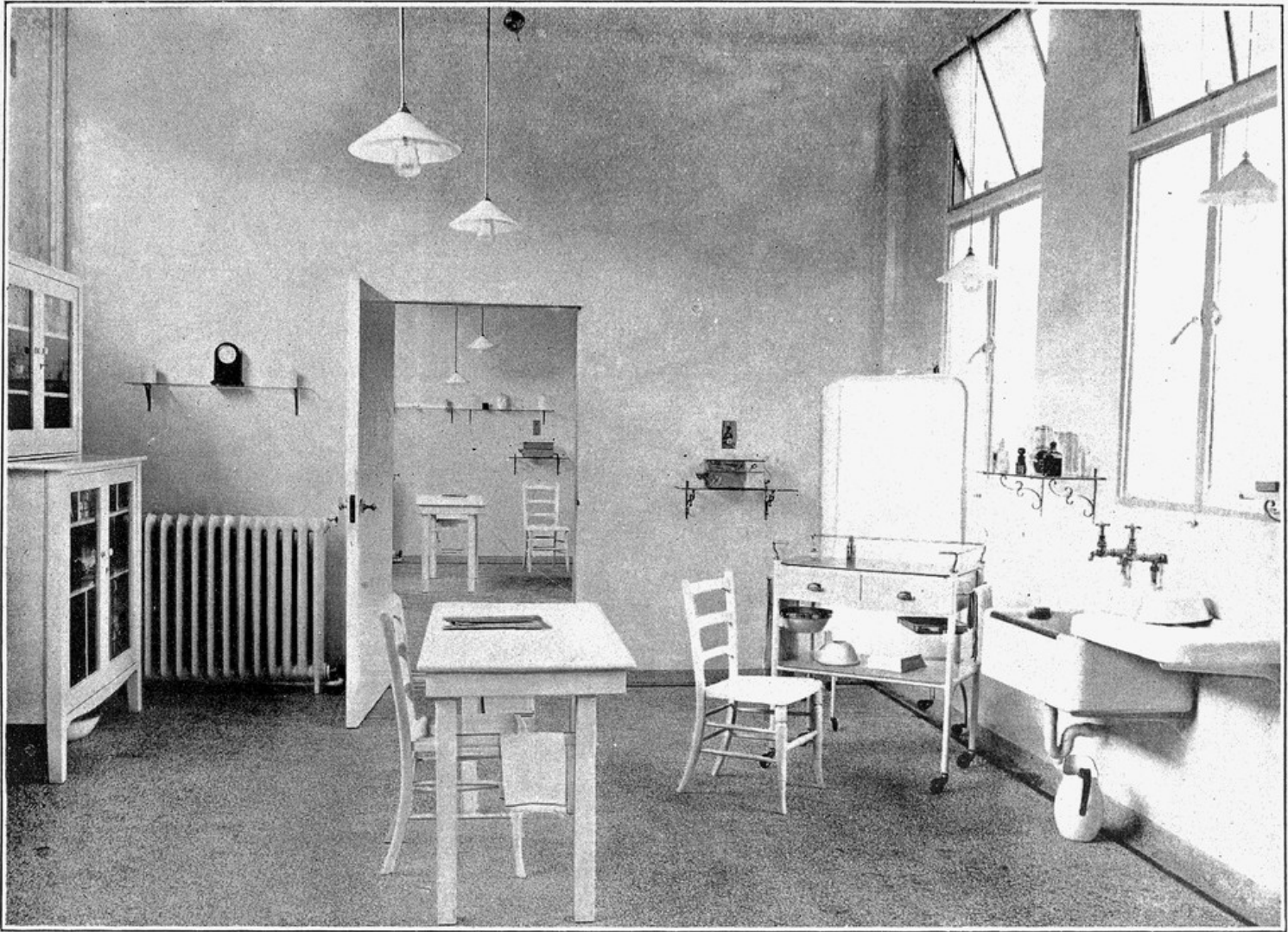


PLATE VII.—Separate Ambulance Rooms for men and women with a communicating door. The rounded edges and corners are well shown. Each Ambulance Room is fully equipped; the couch is not seen being behind and to the left of the camera.