

M0003696: Lancet with end of handle wound with Llama wool

Publication/Creation

November 1933

Persistent URL

<https://wellcomecollection.org/works/hsd7t52f>

License and attribution

Conditions of use: it is possible this item is protected by copyright and/or related rights. You are free to use this item in any way that is permitted by the copyright and related rights legislation that applies to your use. For other uses you need to obtain permission from the rights-holder(s).

**wellcome
collection**

Wellcome Collection
183 Euston Road
London NW1 2BE UK
T +44 (0)20 7611 8722
E library@wellcomecollection.org
<https://wellcomecollection.org>

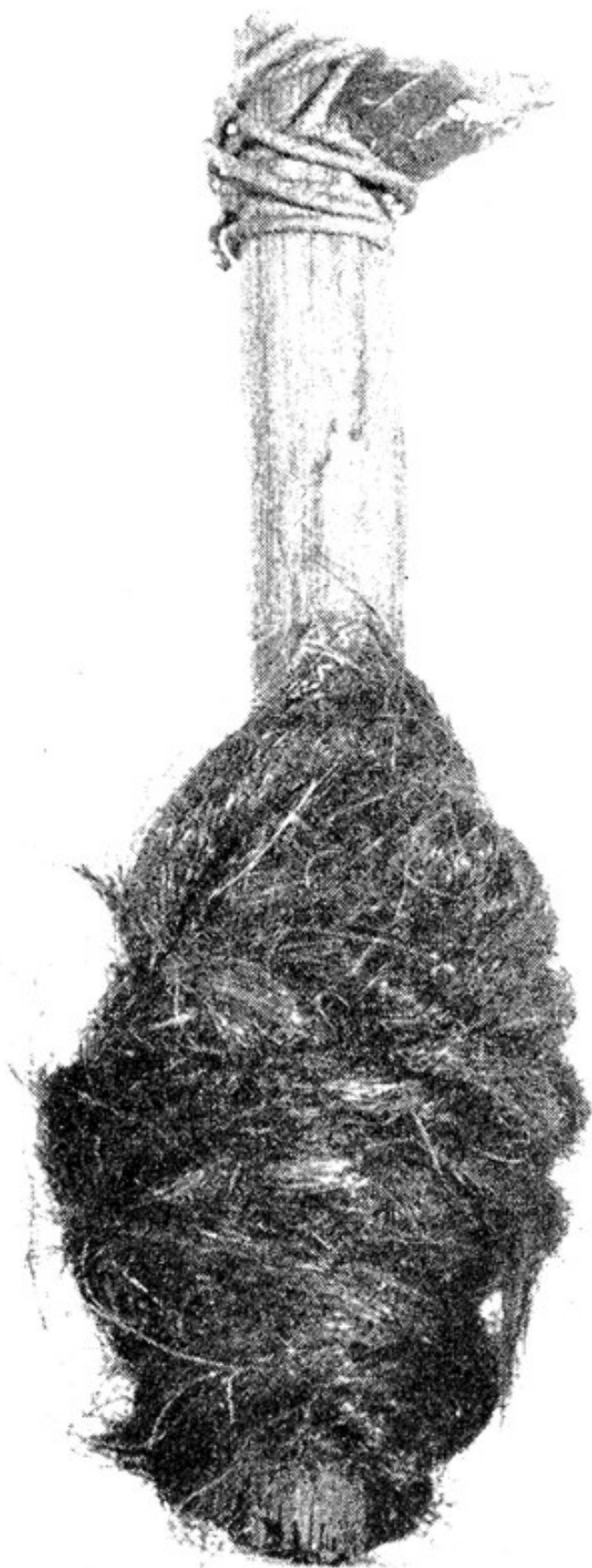


FIG. 15. Lancet is $2\frac{1}{2}$ in. long. End of the handle is wound with llama wool. Point is made of obsidian. Garcilasso de la Vega in "Royal Commentaries" (Book II, Chap. XII) says: "Being laid on the vein with a gentle fillip cuts it with less pain than our ordinary lancets do."