

## **M0003695: Prehistoric Andean copper and bronze instruments**

### **Publication/Creation**

November 1933

### **Persistent URL**

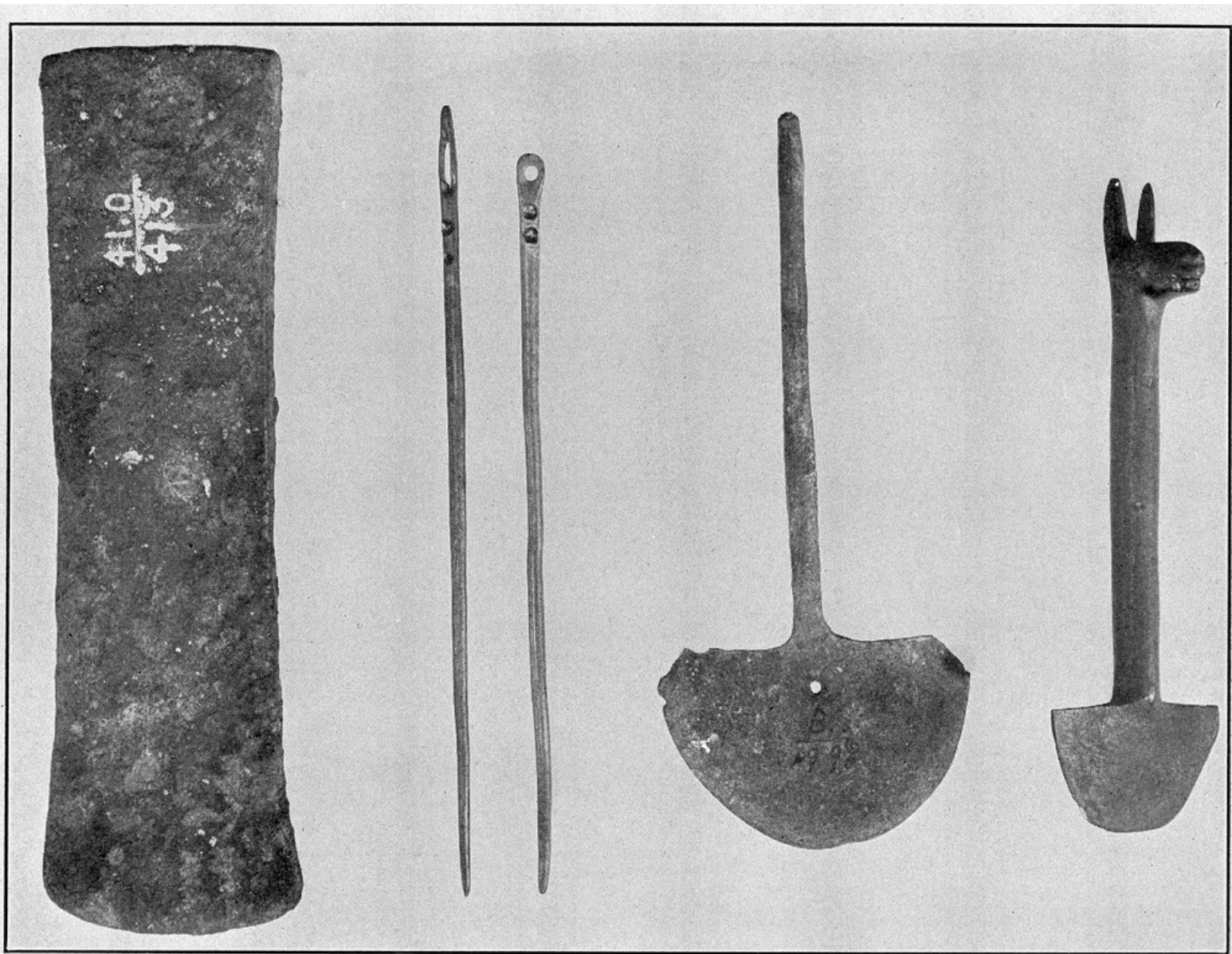
<https://wellcomecollection.org/works/ukhud7te>

### **License and attribution**

Conditions of use: it is possible this item is protected by copyright and/or related rights. You are free to use this item in any way that is permitted by the copyright and related rights legislation that applies to your use. For other uses you need to obtain permission from the rights-holder(s).

**wellcome  
collection**

Wellcome Collection  
183 Euston Road  
London NW1 2BE UK  
T +44 (0)20 7611 8722  
E [library@wellcomecollection.org](mailto:library@wellcomecollection.org)  
<https://wellcomecollection.org>



—*Courtesy of the American Museum of Natural History*

FIG. 12. PREHISTORIC COPPER AND BRONZE IMPLEMENTS

FROM THE ANDEAN HIGHLANDS. MODIFICATIONS OF SOME OF THESE MAY HAVE SERVED FOR SURGICAL PURPOSES. *Left to right:* A BROAD COPPER OR BRONZE BLADE; A COPPER NEEDLE FROM AN EXCAVATION NEAR LLAYAYLL, LAKE TITICACA; A COPPER NEEDLE FROM KASAPATA; A COPPER PIN OR TOPO, CERROCA, BOLIVIA; A COPPER KNIFE, SHORT BLADE, WITH HEAD OF LLAMA ON THE HANDLE.