

M0003712: Two skulls with surgery performed on them

Publication/Creation

27 November 1933

Persistent URL

<https://wellcomecollection.org/works/bwybu2g6>

License and attribution

Conditions of use: it is possible this item is protected by copyright and/or related rights. You are free to use this item in any way that is permitted by the copyright and related rights legislation that applies to your use. For other uses you need to obtain permission from the rights-holder(s).



Wellcome Collection
183 Euston Road
London NW1 2BE UK
T +44 (0)20 7611 8722
E library@wellcomecollection.org
<https://wellcomecollection.org>

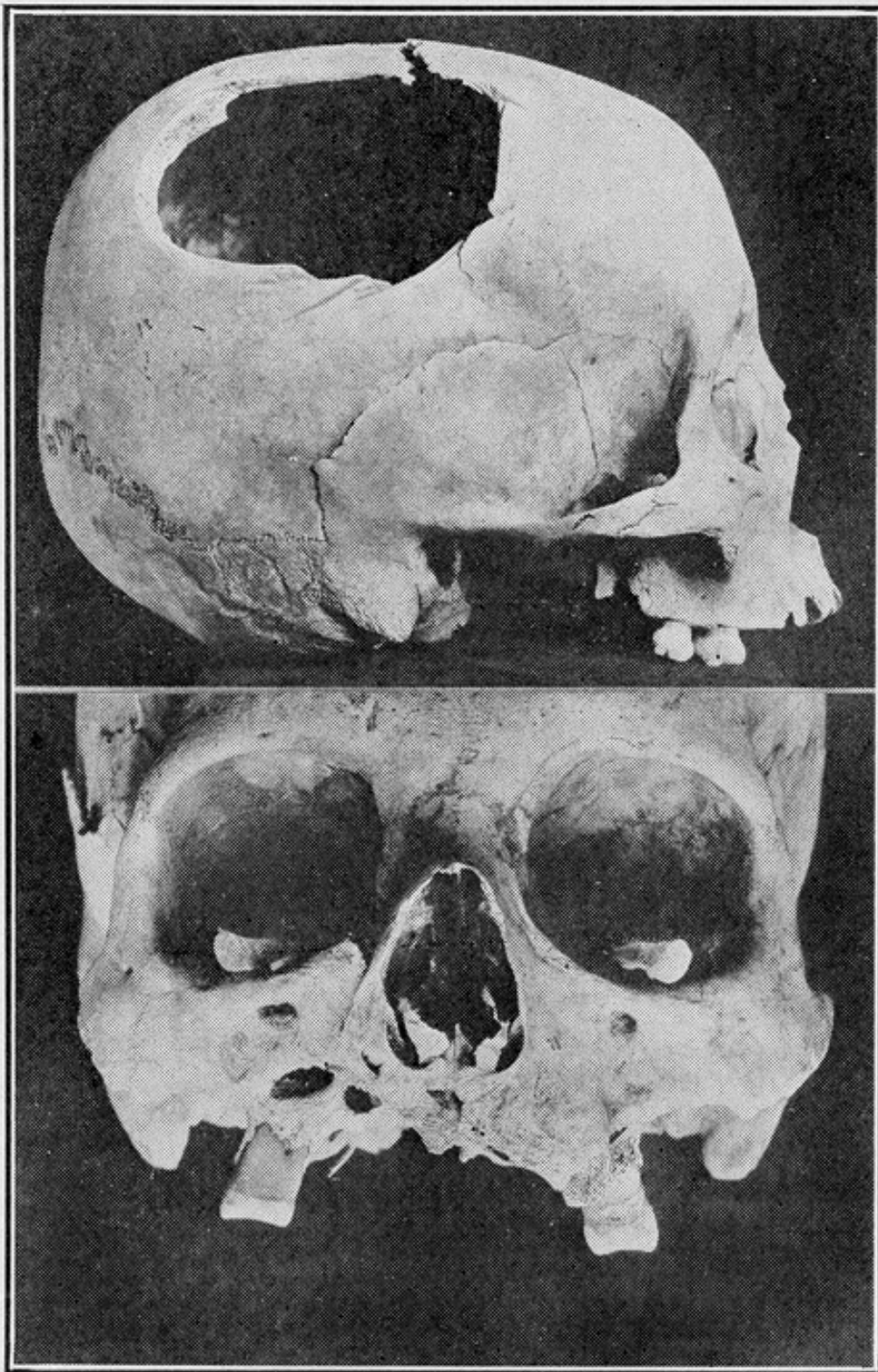


FIG. 24. ANCIENT SURGERY

Above: A LARGE TREPHINED OPENING, MADE BY STRAIGHT AND CURVED CUTTING, IN A FEMALE SKULL, No. 257, SAN DIEGO MUSEUM, FROM CINCO CERROS, PERU. *Below:* IT LOOKS AS IF THE SURGEON HAD CUT AWAY THE PARTS DISEASED BY *uta*. SKULL No. 86, SAN DIEGO MUSEUM, FROM CHAVINA, PERU.