

M0003454: "Seket'enauch", a physician and his wife.

Publication/Creation

15 March 1933

Persistent URL

<https://wellcomecollection.org/works/rdpx8hj2>

License and attribution

Conditions of use: it is possible this item is protected by copyright and/or related rights. You are free to use this item in any way that is permitted by the copyright and related rights legislation that applies to your use. For other uses you need to obtain permission from the rights-holder(s).



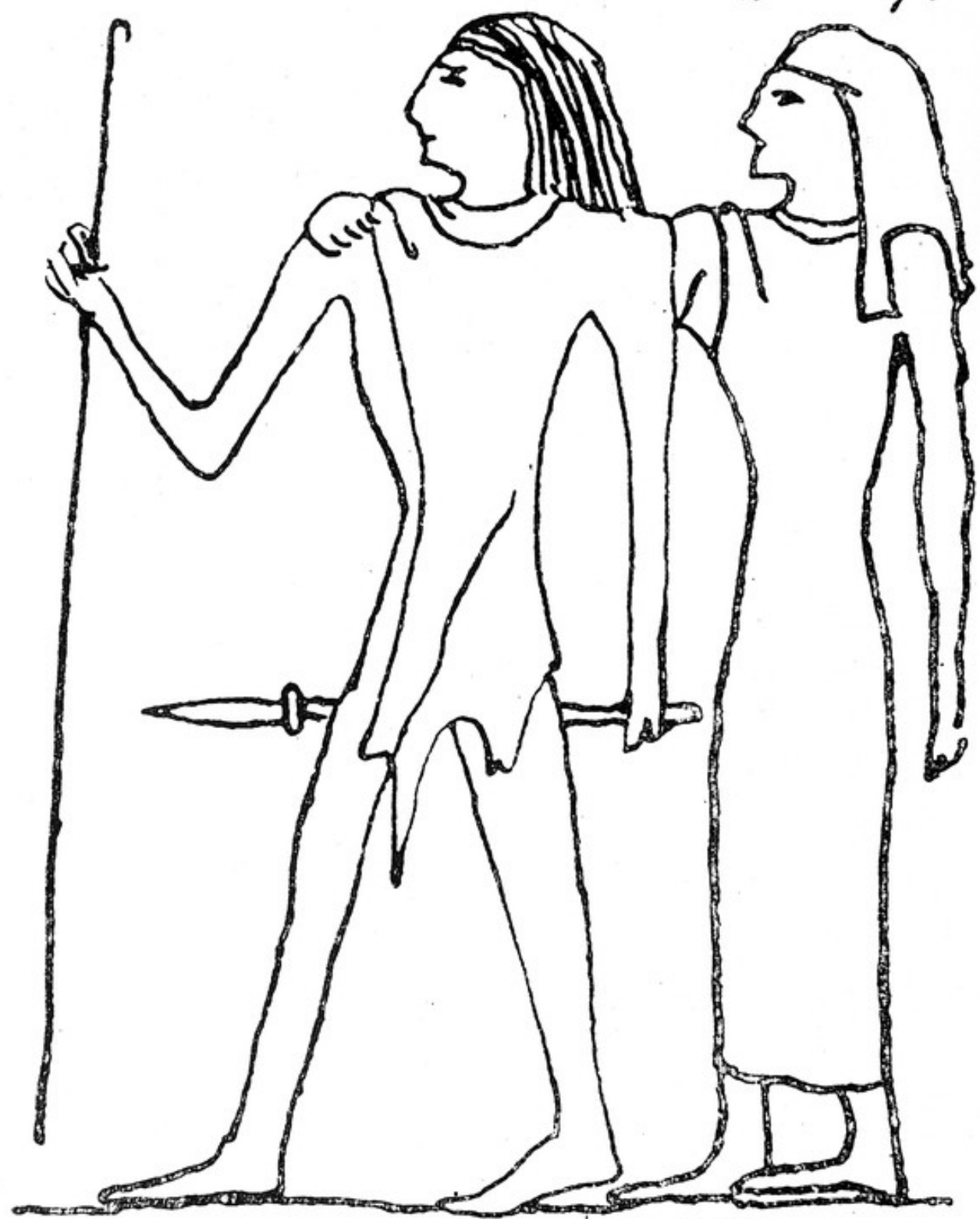
Wellcome Collection
183 Euston Road
London NW1 2BE UK
T +44 (0)20 7611 8722
E library@wellcomecollection.org
<https://wellcomecollection.org>

VI

Seket'enanch

Handwritten symbols: a hook-like shape, a downward-pointing arrow, a circle, a triangle, and a female symbol.

Handwritten scribbles consisting of several parallel diagonal lines.



C. N. Sheldon-Williams. 1936.

This is quite wrong - is not at all like the figures in the sketch. PA 12/2/32

FIG. 1.