

M0003526: Attendant packing red lead

Publication/Creation

4 July 1933

Persistent URL

<https://wellcomecollection.org/works/arhre29b>

License and attribution

Conditions of use: it is possible this item is protected by copyright and/or related rights. You are free to use this item in any way that is permitted by the copyright and related rights legislation that applies to your use. For other uses you need to obtain permission from the rights-holder(s).



Wellcome Collection
183 Euston Road
London NW1 2BE UK
T +44 (0)20 7611 8722
E library@wellcomecollection.org
<https://wellcomecollection.org>

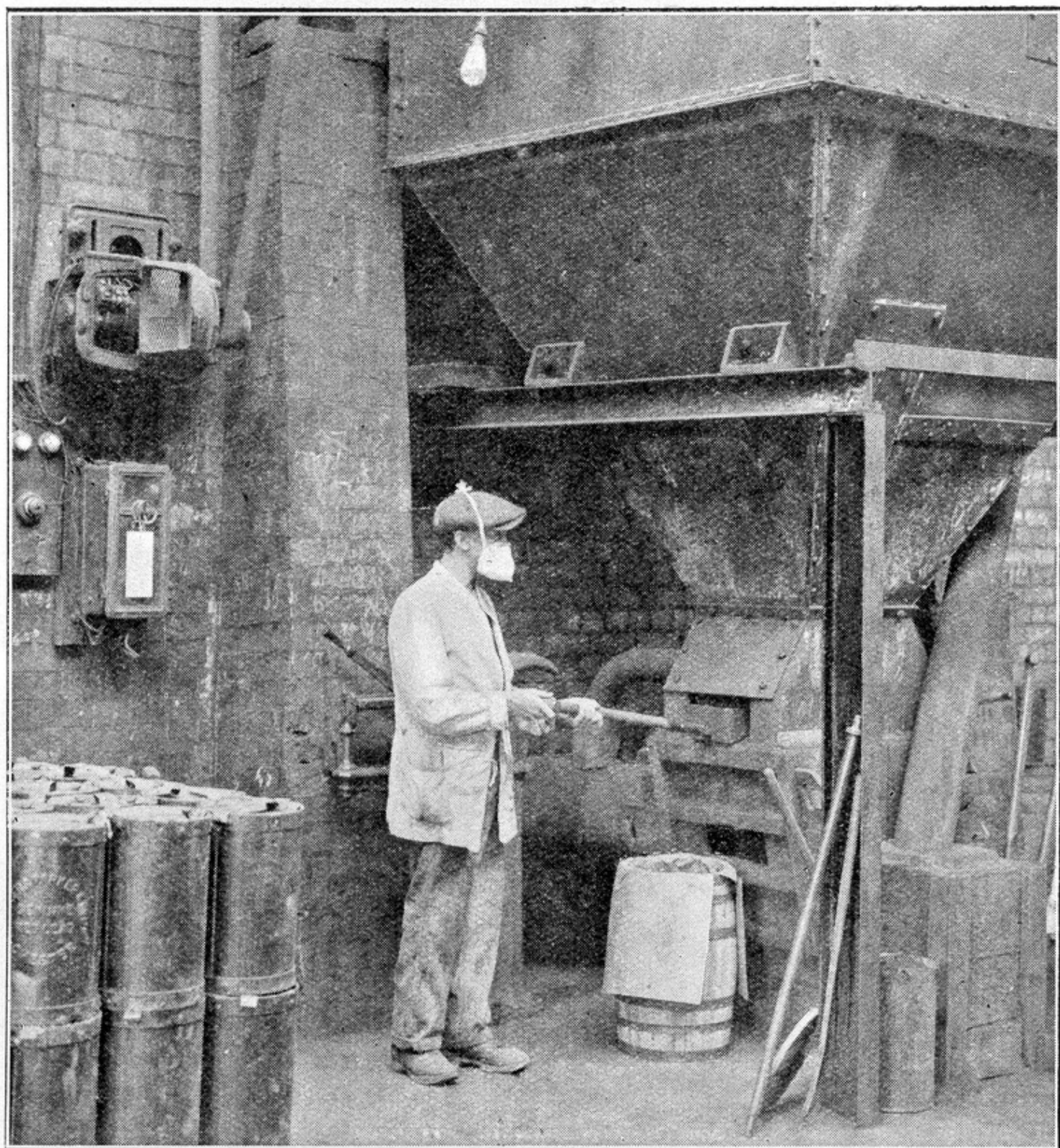


FIG. 16.—Packing red lead. The process of packing is still attended with risk of poisoning. The attendant wearing a respirator is seen shovelling red lead into a barrel, immediately above which is the inlet of an exhaust ventilator. (Courtesy of Messrs. Walker, Parker & Co.)