

Sales catalogue: Chessire, Gibson & Co

Publication/Creation

27 January - 05 February 1919

Persistent URL

<https://wellcomecollection.org/works/fwx4q8j7>

License and attribution

This work has been identified as being free of known restrictions under copyright law, including all related and neighbouring rights and is being made available under the Creative Commons, Public Domain Mark.

You can copy, modify, distribute and perform the work, even for commercial purposes, without asking permission.

**wellcome
collection**

Wellcome Collection
183 Euston Road
London NW1 2BE UK
T +44 (0)20 7611 8722
E library@wellcomecollection.org
<https://wellcomecollection.org>

A. J. TAYLOR Esq. Deceased.

**Strensham Court
and the Moat Farm,
STRENSHAM, WORCESTERSHIRE.**

Specimen
Q.
File
No Purchase

Catalogue

OF

FURNITURE, &c.

To be SOLD BY AUCTION in
BIRMINGHAM

By order of the Public Trustee,

5/2/1919.

CHESSHIRE, GIBSON & Co.

Auctioneers,

21, Waterloo Street,

BIRMINGHAM.

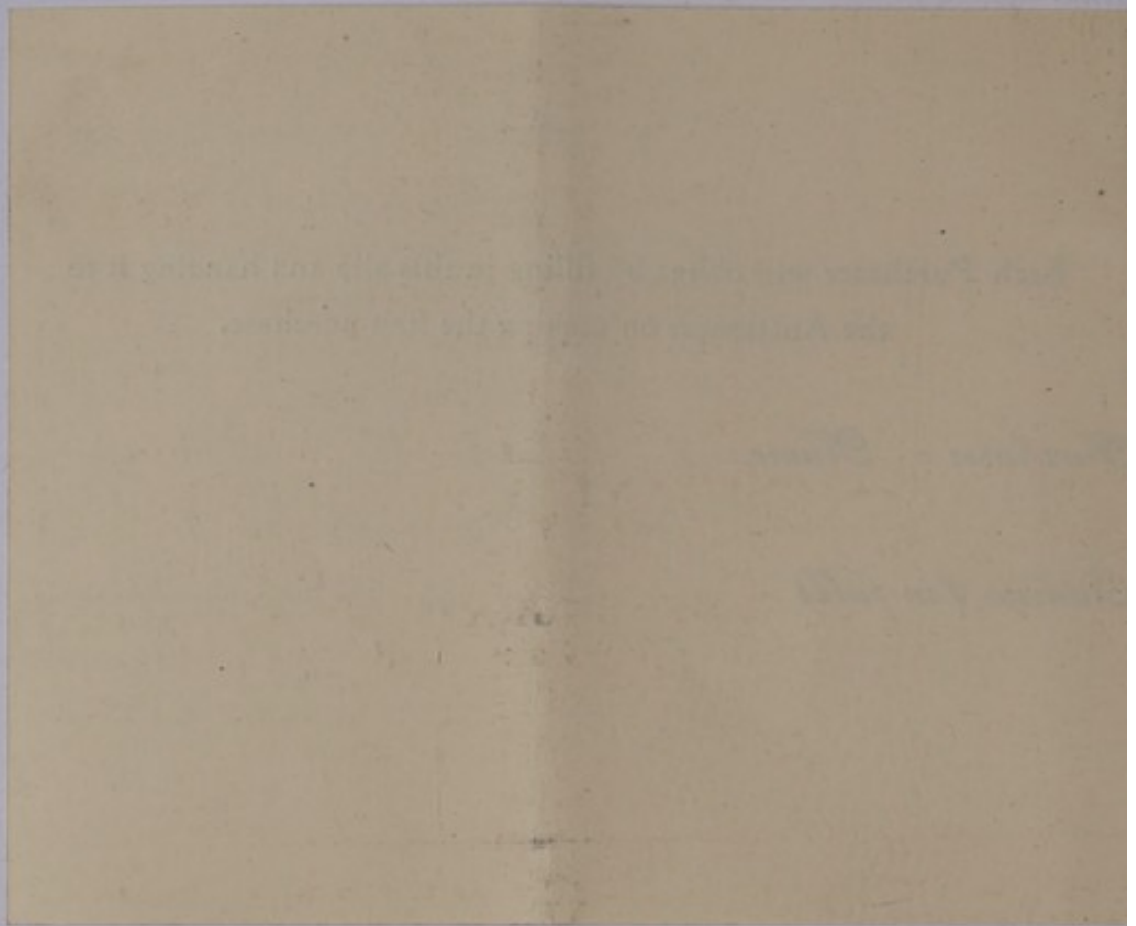
Stamp: BIRMINGHAM AUCTIONEERS AND VALUERS

THE UNIVERSITY OF CHICAGO
LIBRARY
540 EAST 57TH STREET
CHICAGO, ILL. 60637
U.S.A.

Each Purchaser will oblige by filling in this slip and handing it to
the Auctioneer on making the first purchase.

Purchaser's Name.....

Address (in full).....
.....



NA/HMM/CM/Sal/24/307

By Order of the Public Trustee.

A. J. TAYLOR, Esq., Deceased.

Strensham Court and The Moat Farm,
STRENSHAM, WORCESTERSHIRE.

CATALOGUE OF THE
Household Furniture

OIL PAINTINGS, ENGRAVINGS AND PRINTS,
Linen, China and Glass and General Effects,

Being the contents of the Two above Residences,
removed to Birmingham for convenience of selling,

THE SALE WILL BE HELD BY MESSRS.

CHESSHIRE, GIBSON & CO.,

On the premises lately occupied by Messrs. JORDANS LTD.
as a Basket Warehouse,

No. 35, STATION ST., BIRMINGHAM,

On each of the Four Days, extending from

Monday January 27th to Thursday January 30th, 1919,

Commencing at 10-30 o'clock punctually each day.

*On view (by Catalogue only, price two shillings each), on Thursday and Friday,
January 23rd and 24th, 1919, from 10 a.m. to 3 p.m.*

ALSO, BY THE SAME DIRECTION, ON THE SAME PREMISES,

On WEDNESDAY, FEBRUARY 5th, 1919,

Commencing at 10-30 a.m.,
a Sale will be held of the

VALUABLE AND COMPREHENSIVE
LIBRARY OF BOOKS

REMOVED FROM THE SAME RESIDENCES.

On view on Tuesday, February 4th, 1919, from 10 a.m to 3 p.m.

Auctioneer's Offices,
21, Waterloo Street
Birmingham

CONDITIONS OF SALE.

1.—The highest bidder to be the purchaser. The Auctioneers, however, reserve to themselves the right to bid, to accept or refuse any person's bidding or biddings, and to withdraw, divide, or re-arrange any lot; and should any dispute arise between two or more bidders respecting any lot, the lot in dispute shall be put up again and re-sold.

2.—The Vendors reserve the right to bid by themselves or an Agent.

3.—The advance upon the biddings to be regulated by the Auctioneers, and no bidding to be retracted or withdrawn. Purchasers to give in their names and places of abode, and to pay down 25 per cent. on the amount of the purchase money if required, and the remainder of the purchase money on receipt of invoice and before delivery of goods.

4.—Each lot to be at the purchaser's risk from the fall of the hammer; to be removed with all faults, defects, and errors of description, at the expense of the purchaser, but should any purchaser obtain his goods before payment of the account, the receipt of the same by him shall be a binding contract for the payment of the account, together with interest after the rate of £5 per cent. per annum until settlement, and all lots shall remain after the Sale at the risk of the purchaser.

5.—Any damage caused to the Freehold by removal of any of the lots shall be made good by the purchaser.

6.—No property to be removed during the hours of sale unless paid for at the fall of the hammer, and with the consent of the Auctioneer.

7.—All disputes whatever respecting any lot or lots, or the sale and delivery of the goods, shall be determined by the Auctioneers, or in their absence by the Clerk of the Sale, whose decision shall be binding.

8.—That on failure of complying with the above conditions, the money deposited in part payment becomes forfeited to the vendor, who shall be at liberty to re-sell the lots by public or private sale, without previously tendering any notice; and the deficiency, if any, with all expenses attending the same, shall be recoverable by the seller from the first purchaser, who shall not be entitled to any excess in price on such second sale.

LASTLY.—The provisions and powers contained in the above conditions shall, at the option of the Auctioneer, be taken to apply to all lots purchased throughout the sale by any purchaser, so that in case any re-sale should become necessary, the default may, at the option of the Auctioneers, be held to apply to the whole of such lots, notwithstanding that the purchaser may express his willingness to accept any one or more lots.

CHESHIRE, GIBSON & CO.,

Auctioneers and Valuers.

21, Waterloo Street, Birmingham.

ORDER OF SALE.

FIRST DAY, MONDAY, JANUARY 27th.

Second Floor.

Glass and China.

SECOND DAY, TUESDAY, JANUARY 28th.

First Floor.

Bedroom Furniture, Carpets, Persian Rugs, Velvet Curtains, Dressing Cases, Linen and Blankets.

THIRD DAY, WEDNESDAY, JANUARY 29th.

Ground Floor.

Contents of Reception Rooms, Antique Furniture, Piano-fortes, Tapestries, Carpets, Rugs, Oil Paintings, Statuary, Bronzes, Office Furniture, Sporting Items, etc.

FOURTH DAY, THURSDAY, JANUARY 30th.

Second and Third Floor.

Bedroom Furniture, Proof Engravings, Cheffoniers, Book-cases, Suit Cases, etc.

Basement.

Bedroom Furniture, Copper, Brass and Pewter Cooking Utensils, Pic-nic Baskets, Croquet Sets, Weighing Machine, Sewing Machines, etc.

FIFTH DAY, WEDNESDAY, FEBRUARY 5th.

Library of Books.

(See separate Catalogue).

FIRST DAY'S SALE,
MONDAY, JANUARY 27th, 1919.

Commencing at 10-30 a.m.

Second Floor.

Glass and China.

- Lot
- 1 Seven glass vases, green glass scent bottle, and fern pot
 - 2 Four Doulton fern pots, majolica basket, three small plates, six glass shades, and basket
 - 3 Two pairs of cut decanters and odd ditto
 - 4 Eight water bottles and four glasses
 - 5 Thirteen candlestick glasses, eight water bottles, and pickle jar
 - 6 Two pairs of wine decanters and spirit bottle
 - 7 Six glass menu holders and eight glass vases
 - 8 Six green hyacinth glasses, rose bowl and honey jar
 - 9 Two cut sugar bowls and two glass flower bowls
 - 10 Eleven flower glasses
 - 11 Two flower vases, two sweetmeat stands, and five soda water tumblers
 - 12 Two flower holders, sixteen small glass vases, and fourteen salt cellars
 - 13 Nine vases and pair of Dutch E.P. mounted spirit bottles
 - 14 Two cut glass dishes and cake stand
 - 15 Three sardine dishes, glass epergne, and four ice plates
 - 16 Six antique goblets with spiral stems
 - 16a Five ditto
 - 17 Water jug, decanter, and one bottle
 - 18 A frosted glass double-handled wine cooler
 - 19 An engraved honey jar and three cut glass salts
 - 20 Four cut dishes, 6in.
 - 21 Four ditto, 7in.
 - 22 Four ditto, 8in.
 - 23 Four ditto, 5in.
 - 24 Fourteen frosted ice plates, four ruby plates, and four small glass dishes
 - 25 Eight lipped finger bowls, six plain ditto, and four glasses
 - 26 Three pairs of cut-glass salt cellars
 - 27 Seven oval cut-glass dishes
 - 28 Four engraved and four cut liqueurs, two engraved glass butter tubs with covers

Lot

- 29 Shaped dish, with liqueur bottle and five thimble glasses
- 30 Thirty frosted ice plates, cut-glass dish, and plain dish
- 31 Antique cut-glass urn-shaped vase and bowl 15in high
- 32 A 7½in engraved glass fruit bowl and two cut clarets
- 33 Venetian glass vase, engraved Hungarian-shaped goblet
- 34 Antique purple ribbed glass decanter, two green and gold vases and scent bottle
- 35 Venetian glass double-handled vase, 13in. high, and engraved glass vase 12in. high
- 36 Green glass vase 24in high, and flower vase with gilt decorations 13in. high.
- 37 Nine dark and eighteen light green clarets
- 38 Green glass liqueur decanter and seven glasses on tray
- 39 Amber ditto and eight ditto
- 40 Sheffield plated spirit frame, with three coloured glass bottles
- 41 Engraved star pattern service of glass, consisting of five water bottles and glasses, seven water glasses, fifteen lipped finger bowls, nine unlipped finger bowls, sixteen clarets, one liqueur
- 42 Twenty-four engraved amber hock glasses
- 43 Twenty-four plain spirit glasses
- 44 Twenty-four ditto
- 45 Twelve ditto and fourteen ports
- 46 Eighteen plain champagne glasses
- 47 Eleven plain finger bowls
- 48 Two engraved and cut claret jugs, vine decoration
- 49 Two ditto wine decanters, vine decoration
- 50 Eighteen ditto lipped finger bowls, vine decoration
- 51 Seventeen ditto unlipped finger bowls, vine decoration
- 52 Ten ditto small jugs, vine decoration
- 53 Six ditto salt stands and one small dish, vine decoration
- 54 Fifteen ditto champagnes, vine decoration
- 55 Fifteen ditto sherries, vine decoration
- 56 Three ditto water bottles, vine decoration (one repaired).
- 57 Three ditto goblets, vine decoration.
- 58 Eight ditto water bottles and ten glasses, vine decoration.
- 59 Thirty-one ditto ports and two clarets, vine decoration.
- 60 Eight amber champagnes.
- 61 Four antique engraved goblets with crests, etc., cut stems.
- 62 Four ditto.
- 63 Six engraved goblets
- 64 Twelve cut amber sherries
- 65 Valuable Bohemian cut-glass ruby and gilt dessert service, consisting of two flower and fruit stands (three-tier), eight fruit stands, twenty-three fruit plates, eight fruit dishes, four vases with covers, two jugs, four tumblers
- 66 Seventeen antique cut finger bowls, lipped
- 67 Ten ditto spirit glasses

- Lot
 68 Seven ditto ports and two liqueurs
 69 Three ditto goblets
 70 Eleven ditto dishes and eight bowls
 71 Seven ditto cruet bottles and cream jug
 72 Twenty-one Venetian sherries with gilt decoration
 73 Five richly cut wine decanters, large
 74 Five ditto, small
 75 Five moulded goblets, sugar bowl, two water bottles and glass
 76 Fifteen ditto and cut champagnes
 77 Eleven plain tumblers
 78 Three water jugs, water bottle and glass, claret jug, and two plain glasses
 79 Glass bowl and two cylindrical glasses with cut stems
 80 Two moulded dishes, small cut bowl, five cruet bottles, and four pieces of odd glass ware
 81 Richly cut glass fruit bowl, 10in diam, and six small bowls
 82
 83

China.

- 84 Green and gold double-handled dish, two small dishes, egg cruet (damaged), and nineteen pieces of tea and breakfast ware
 84a Four cheese dishes
 84b Four muffin dishes, and three covers
 85 Worcester tea service, by *Fligh*, painted and gilt decoration, consisting of tea pot, sugar basin, cream jug, slop bowl, bread and butter plate, four cups and five saucers
 86 Dresden plate, cup with cover, and three vases
 87 Pair of small tea pots with lamp stands, gilt and hand-painted floral decoration
 88 Hand-painted blue and gilt china inkstand with ormolu mounts and pen rack at back
 89 Lustre jug and white and gold tazza
 90 Hand-painted white and gold inkstand, fitted with three bottles
 91 Yellow and gilt Worcester jug vase
 92 Floral pattern tea service, thirty-five pieces
 93 Two handsome Oriental plates, decorated in flowers, 15in. diam. with lion crest on rims
 94 Ditto, 14in. diam., ditto
 95 Ditto 10½in. diam. and one 9in. diam.
 96 Ditto 12½in. diam.
 97 Ditto 13½in. diam.
 98 An Oriental plate decorated in flowers, 15½in. diam.
 99 Majolica jug with figures in relief
 100 Pair of Chinese vases with figures, 9½in. high

- Lot
- 101 Pair of Dresden vases, decorated with figures, 7in. high
- 102 Chinese teapot and stand with flowers in relief, Chinese bowl, and two Staffordshire bowls
- 103 Chinese plate, 8in. diam.
- 104 Handsome Dresden china clock, on gilt pedestal 19in. high, with hand-painted panels richly decorated with vine in relief, and pair of vases 15in. to match
- 105 Pair of Dresden china figures, 5in. high
- 106 Ditto
- 107 Ditto
- 108 One Dresden china figure, small, and another (broken)
- 109 Dresden china figure, "Lady with Spinning Wheel," 6½in. high (slightly damaged)
- 110 Dresden china vase and cover, decorated in Cupids
- 111 Three Dresden china birds and salt cellar
- 112 A handsome Dresden china group, "Male and female figures"
- 113 Biscuit china cottage pastille burner
- 114 Chinese teapot and two small jugs
- 115 Dresden jug with cover, decorated figures
- 116 Worcester teapot, Dresden swan and malachite tazza vase
- 117 Dresden cup and saucer and Royal Sevres cup and saucer, decorated figure panels
- 118 Wedgwood box, Dresden cup and saucer, alabaster dog, and Oriental cup with cover
- 119 Chinese teapot and Wedgwood jug
- 120 Three Worcester jugs and ten pieces of china and glass
- 121 Four jardinières with rose decoration
- 122 Pair of blue glass cornucopia vases, blue glass vase, and water bottle
- 123 Wedgwood teapot and pair of terra cotta Egyptian pattern vases, 6½in. high
- 124 Two Doulton plates and hot-water plate
- 125 Pair of richly gilt double-handled vases, decorated with figure panels (one damaged)
- 126 Pair of Chinese cylindrical vases, 10in., and centre vase to match, with cover
- 127 Pair of Worcester vases with hand-painted flowers (one damaged), Chinese jug and cylindrical vase (damaged)
- 128 Two Worcester plates, dish, eight saucers, cup and plate, and three glazed dishes and plate
- 129 Barrel ornament with figure and china stand (stand broken)
- 130 Three Etruscan-pattern vases and jug
- 131 Hungarian perforated vase and decorated goblet
- 132 Four Oriental cups and saucers
- 133 Marble female figure, 12in. high
- 134 Majolica ornament, "Bittern"
- 135 Dresden bowl cover and stand, decorated with birds on panels
- 136 Two blue and gold Dresden plates, Delft flower vase

- Lot
- 137 Two hand-painted ewers and basins (small) and six pieces of breakfast ware
- 138 Pair of pink and gold lustre vases, 15in. high
- 139 Richly gilt opal glass toilet service, twenty-four pieces
- 140 Majolica lobster dish (damaged)
- 141 Pair of Battersea enamel candlesticks, floral decoration, 10in. high
- 142 Ditto, 10½in. high
- 143 One ditto, 10½in. high, and another 5½in. high
- 144 Ten Dresden plates with perforated edges, decorated in birds, insects and flowers
- 145 Handsome Crown Derby vase with stopper, richly decorated with flowers in relief, 18in. high
- 146 Handsome Chinese bowl with floral decoration, 15in. diam.
- 147 Dresden dish, decorated with birds and insects, 22in. diam., and ten plates
- 148 Handsome white and gold spode Copeland breakfast service, consisting of fifty-seven plates, eighteen breakfast cups, fifteen saucers, two slop basins, three muffin dishes and covers, and eleven egg cups
- 149 Worcester china tea and coffee service, consisting of fifteen cups, nineteen saucers, four bread and butter plates, and two slop basins
- 150 Two Copeland and Garrett sugar basins, six cups and saucers, and eleven egg cups
- 151 Staffordshire dessert service, mauve and gilt, decorated with flowers, and consisting of fruit stand, six dishes, ten plates, and two tureens and stands (cover of one broken)
- 152 Handsomely decorated Worcester china tea service, by *Chamberlain*, buff ground, hand-painted with birds and insects on panel, and consisting of teapot and stand (slightly damaged), sugar, cream jug, slop basin, ten cups, and nine saucers
- 153 13in. card or cake tray, by *Chamberlain*, with gilt handle
- 154 Blue, white and gold dinner service, twenty-eight pieces
- 155 Handsome pair of Chinese vases, decorated in cherry blossom, with ormolu mounts, 19½in. high
- 156 White and gold tea and coffee service with floral decoration
- 157 Costly Worcester china dinner service, by *Chamberlain*, blue and gold band border, each piece separately decorated with flowers, and consisting of sixteen meat dishes, two soup tureens and stands, four vegetable dishes, four gravy tureens and stands, salad bowl, cheese dish, twenty-five soup plates (one broken), sixty meat plates, and twenty-four cheese plates
- 158 Valuable pair of Worcester double-handed vases with covers, by *Chamberlain*, decorated with flowers, 7½in. high

Lot

- 159 Pair of Worcester double-handled vases, decorated with flowers, 9in. high
- 160 Pair of ditto perforated vases, 10in. diam
- 161 Ditto with covers, by *Chamberlain*, decorated with flowers, 7in. high
- 162 White and gold Worcester dinner service, by *Chamberlain*, richly decorated with flowers, and consisting of dish and drainer, two soup tureens and stands, hot water dish and cover, salad bowl, two gravy tureens and stands, twenty-three soup plates, thirty-five meat plates, eleven cheese plates
- 163 Four Worcester white and gold fruit stands, by *Chamberlain and Co.*, with perforated borders
- 164 Handsome blue and white dinner service, one hundred and five pieces
- 165 Four Dresden cups and saucers
- 166 Floral pattern Worcester green and gold dessert service, consisting of eight stands and eighteen plates
- 167 Blue and gold breakfast service, seventy-seven pieces
- 168 Seven white and gold coffee cups and saucers
- 169 White and gold afternoon tea service on tray, seven pieces
- 170 Cream breakfast service, decorated in birds and insects, twenty-eight pieces
- 171 White and gold afternoon tea service on tray, eleven pieces
- 172 Buff, white and gold Worcester tea and breakfast service with floral decorations, and consisting of sugar basin and cover, two slop basins, two milk jugs, egg cruet, two muffin dishes with covers, two bread and butter dishes, five egg cups, thirty-one plates, thirty cups, thirty-six saucers, and butter cooler
- 173 Richly decorated gilt and white Worcester china dessert service, by *Chamberlain*, consisting of one fruit stand, twelve dishes, two sugar stands with covers, and twenty plates
- 174 Blue and gold French china tea and breakfast service, by *La Roche*, Palais Royale, and consisting of two basins, two milk jugs, four bread and butter plates, thirteen small plates, twenty-four cups, and twenty-five saucers
- 175 Large Italian hand-painted plaque, "Joseph in the Well," 17½in. diam (damaged)
- 176 Floral pattern tea service, forty-six pieces
- 177 Two Worcester flower vases and Majolica bowl
- 178 Japanese vase (damaged), two Chinese bowls and a saucer
- 179 Seven breakfast cups and saucers
- 180 Four Worcester vases and eight pieces of glass and china
- 181 E.P. engraved and chased ewer and basin
- 182 Two game dishes and covers, salad bowl and dish

- Lot
 183 White and gold dessert service, by *Copeland & Garrett*, consisting of seven fruit dishes (three damaged) and thirteen plates
 184 Five coffee cups, eleven saucers, and Worcester dish
 185 Four Chinese saucers, two cups, table lamp, and seven ornaments
 186 Three white china cake stands, Worcester flower basket, two Majolica vases, and five rings, etc
 187 Ten plates and thirteen pieces of china
 188 Alabaster tazza vase, soup tureen, two jardinières, and wicker-covered bottle
 189 Twelve white china plates, four vases, two feeding cups, and ten odd pieces
 190 Soup tureen and four casseroles, etc
 191 Eleven soup plates, two jugs, and bed bottle
 192 White tea and dinner ware, forty-six pieces
 193 Five large white meat dishes and two strainers
 194 Ten white dishes
 195 Six glass globes and shades
 196 Seven pie dishes, six vegetable dishes, and thirteen salad dishes
 197 White and gold breakfast ware, forty-seven pieces
 198 Willow pattern tea ware, thirty-three pieces
 199 Eight glazed stoneware coffee pots and teapot
 200 Five ditto jugs
 201 Five wooden plates, vase, toast rack, and brown ware jug
 202 Six brown stoneware jugs
 203 Nineteen glazed stoneware casseroles
 204 Floral pattern double toilet service with slop pail, twenty pieces
 205 Ditto twenty pieces
 206 Floral pattern toilet ware, eight pieces
 207 Floral pattern double toilet service, fifteen pieces
 208 Ditto twenty pieces (basin broken)
 209 Floral pattern toilet service, eight pieces
 210 Ditto ten pieces
 211
 212
 213

END OF FIRST DAY'S SALE.

Second Day's Sale, TUESDAY, JANUARY 28th, 1919.

Commencing at 10-30 a.m.

First Floor.

Lot

- 214 Folding table, in mahogany.
- 215 Arm chair, in mahogany, hair stuffed.
- 216 Ditto.
- 217 Handsome wardrobe, in walnut, the centre enclosed by panelled doors, and fitted with six sliding trays and hanging cupboards at sides, 7ft. by 1ft. 7in. by 6ft.
- 218 24ft. of crimson velvet pile stair carpet.
- 219 Seven prints in frames and oleograph.
- 220 Sepia drawing, "Moseley Hall," in maple frame, water-colour drawing in frame, and three others.
- 221 Mahogany bidet and fitting.
- 222 Pair of Chenille window curtains.
- 223 Ditto.
- 224 Small mahogany table with drawer.
- 225 Arm chair in oak, hair stuffed.
- 226 Easy chair ditto.
- 227 Pair of engravings, portraits, in bird's-eye maple frames.
- 228 Set of six racing prints in frames.
- 229 3ft 6in massive all brass bedstead and box spring mattress
- 230 Hair mattress
- 231 Feather bolster and two pillows.
- 232 Handsome circular fronted four-tier chest of five drawers in mahogany, 3ft. 8in. by 2ft.
- 233 Toilet glass in mahogany frame.
- 234 Iron fender.
- 235 6ft. mahogany four-post bedstead, with two massive carved pillars and cretonne upholstery at end.
- 236 4ft. ottoman, covered in tapestry.
- 237 Antique swinging cradle, in mahogany, with cane sides and canopy top, supported on massive base.
- 238 Four Dickens' coloured prints in oak frames.
- 239 Handsome 6ft. four-post bedstead, in mahogany, with richly carved canopy top and pillars, the ends and top being upholstered with crimson damask.
- 240 Large engraving, "Royal Agricultural Society Meeting," in bird's-eye maple frame, after *Richard Ansdell*.

- Lot
- 241 Large steel engraving, "The Horse Fair," after *Rosa Bonheur*, in gilt frame.
- 242 Wool and hair mattress.
- 243 Flock ditto.
- 244 Wool and hair mattress.
- 245 Two mahogany towel airers.
- 246 Ditto.
- 247 Set of four chairs, in walnut, with ornamental backs.
- 248 Night stool and bed steps, in mahogany.
- 249 Arm chair, in mahogany, hair stuffed.
- 250 Handsome five-tier mahogany chest of six drawers, circular fronted, 4ft. by 2ft. by 4ft. 3in.
- 251 Toilet glass, 24in. by 17in., in massive mahogany frame, with shaped top.
- 252 Persian rug, 8ft. by 4ft. 2in.
- 253 Small antique mahogany table.
- 254 3ft. 3in. dressing table, in mahogany, fitted with drawer.
- 255 3ft. ditto.
- 256 4ft. 6in. mahogany washstand, fitted with three drawers (marble top damaged).
- 257 Rosewood dressing case with brass inlay, fitted with five glass bottles with silver mounts, three ivory-backed brushes, and tray containing six silver-mounted boxes, scissors, button hook, etc.; also leather case for same.
- 258 Brass bound mahogany dressing case, fitted with four glass bottles with silver mounts, two ivory-backed hair brushes, and two trays containing seven silver-mounted boxes, two razors with tortoise-shell handles, scissors, button hook, etc.
- 259 Handsome mahogany winged wardrobe, fitted with three sliding trays and drawers in centre, with hanging cupboards at sides, 7ft. 6in. by 2ft. by 6ft. 6in.
- 260 4ft. mahogany kneehole washstand with marble top and five drawers (top damaged).
- 261 4ft. mahogany kneehole dressing table, fitted with five drawers.
- 262 Mahogany bidet (no fitting).
- 263 Three china foot pans and sundry china.
- 264 Engraving, "Coming of Age in the Olden Time," after *W. F. Frith, R.A.*, in oak frame.
- 265 Engraving, "Coronation of Queen Victoria," in bird's-eye maple frame.
- 266 Four-fold painted photograph screen, five photos, etc., in frames, two political cartoons in frames, and print, "Bolton Abbey."
- 267 3ft. dressing table, in mahogany (inlaid), and fitted with two drawers.
- 268
- 269
- 270 3ft. 3in. massive all-brass bedstead and box spring mattress.

Lot

- 271 Hair mattress.
 272 Bolster and two pillows.
 273 Overmantel in mahogany frame, 32in. by 21in.
 274 Four coloured photos in gilt frames.
 275 Large Wilton pile carpet, about 23ft. by 17ft.
 276 Persian rug 9ft. by 4ft. 3in.
 277 3ft. mahogany dressing table with carved front.
 278 Antique toilet glass in mahogany frame.
 279 6ft. mahogany four-post bedstead with carved pillars on massive claw feet, having ornamental gilt cornices and ends upholstered in blue figured silk.
 280 Cheval glass, 45in. by 24in., in handsome carved walnut frame.
 281 Ditto with brass candle holders.
 282 Couch in walnut, hair stuffed and upholstered in cretonne, with saving cover and cushion.
 283 Couch upholstered in cretonne and hair stuffed, with squab and mattress.
 284 Couch in mahogany, spring and hair stuffed, with squab, etc.
 285 Bordered Wilton pile carpet, 10ft. 6in. by 6ft. 9in.
 286 Two hearth rugs to match.
 287 Patent folding card table in mahogany, with green cloth top and fitted with drawer.
 288 Five-tier mahogany chest of seven drawers, with brass ends and brass fittings, 3ft. 3in. by 1ft. 7in.
 289 3ft. 9in. walnut dressing table with shaped top and fitted with drawer.
 290 Ditto.
 291 3ft. 5in. ditto.
 292 Rosewood spindle arm chair with cushion.
 293 Ditto with cane seat and two cushions covered in tapestry.
 294 Cheval glass, 42in. by 22in., in handsome mahogany frame with ornamental top.
 295 Cheval glass, 46in. by 21in., in mahogany frame.
 296 Toilet glass, in mahogany frame, with ornamental top.
 297 Wilton pile carpet, large flower pattern, about 18ft. by 10ft.
 298 Crimson velvet pile carpet, 11ft. 6in. by 11ft. 3in.
 299 Axminster hearthrug.
 300 Pedestal bedside cupboard in mahogany
 301 Mahogany winged wardrobe, having eight sliding trays in centre; also cupboards with sliding trays at sides, the four panelled doors enclosing same having carved ornamentation and massive carved handles.
 302 4ft. mahogany kneehole dressing table with movable mirror and fitted with three drawers and two cupboards.
 303 4ft. washstand in mahogany, with marble top and back fitted with two drawers.

- Lot
- 304 Openwork steel fender.
- 305 Ditto.
- 306 Wardrobe in mahogany, with plate glass centre and fitted with three shelves and large drawer under, 3ft. 8in. by 1ft 6in by 6ft 3in
- 307 3ft dressing chest in mahogany, fitted with four drawers
- 308 Chippendale pattern oval-shaped toilet glass in mahogany frame
- 309 3ft 6in washstand in mahogany, with marble top and back, having two cupboards under
- 310 Two mahogany chairs with cane seats and towel airer
- 311 4ft five-tier mahogany circular-fronted chest of six drawers
- 312 Capercaillie in glass case
- 313 Wilton pile carpet, 12ft. 3in. by 6ft. 9in.
- 314 Hearthrug to match.
- 315 Pair of heavy crimson velvet window curtains, 9ft. 6in. by 5ft.
- 316 Ditto.
- 317 Valances to match.
- 318 Pair of heavy crimson velvet window curtains with gold border, 14ft. by 5ft. 6in.
- 319 Ditto.
- 320 Ditto.
- 321 Ditto.
- 322 Ditto.
- 323 Ditto.
- 324 Valances to match.
- 325 Ditto.
- 326 Ditto.
- 327 Arm chair upholstered in crimson damask.
- 328 Pierced steel fender and set of fire-irons with ormolu mounts.
- 329 Mahogany luggage rest.
- 330 3ft. massive all-brass bedstead and box spring mattress.
- 331 Wool and hair mattress, bolster and pillow.
- 332 Pair of coloured prints in gilt frames, and two prints in bird's-eye maple frames, and crayon drawing of horse in frame.
- 333 Two sporting prints in oak Oxford frames, two photos ditto, sketch ("Lake Como") in rosewood frame, and water-colour in frame.
- 334 Quantity of felt pads for staircase.
- 334a 3ft. massive all-brass bedstead and box spring mattress.
- 335 Hair mattress.
- 336 Two feather bolsters.
- 337 Mahogany bidet (fitting damaged).
- 338 Toilet glass, 23in. by 17in., in mahogany frame.
- 339 3ft 4in. mahogany dressing table with drawer.
- 340 Persian rug, 5ft. 6in. by 4ft.
- 341 Crimson velvet pile carpet, 6ft. 6in. by 7ft. 6in.

What
to this

- Lot
 342 Mahogany hanging wardrobe with bevelled plate-glass centre and drawer under, 4ft. by 1ft. 6in. by 6ft. 6in.
 343 Handsome overmantel in ornamental carved walnut frame, 60in. by 43in.
 344 Handsome old mahogany winged wardrobe, the centre enclosed by two doors and fitted with six sliding trays, with four drawers under, having hanging cupboard on one side and cupboard with three shelves and drawer on the other, 8ft. by 1ft. 9in. by 7ft. 9in.
 345 Handsome gilt picture frame for portrait, with gilt mount, 3ft. 4in. by 3ft. 3in.
 346 Six sporting prints in oak frames.
 347 Coal vase, in walnut, with liner and scoop.
 348 Antique 3ft. bow-fronted chest of three drawers with brass mounts.
 349 Bootjack in mahogany and toilet glass in mahogany.
 350 Large oak cupboard, fitted with three shelves and two drawers, 5ft. by 2ft. by 6ft. 3in.
 351 Small circular stone-topped table on ebonized pedestal.
 352 Brass-bound oak linen chest.
 353
 354
 355

Blankets, Linen, etc.

- 356 Two pairs of blankets.
 357 Ditto.
 358 Ditto.
 359 Ditto.
 360 One pair of blankets.
 361 Ditto.
 362 Ditto.
 363 Ditto.
 364 Ditto.
 365 Ditto.
 366 Ditto.
 367 Ditto.
 368 Two pairs of blankets.
 369 Ditto.
 370 Ditto.
 371 Ditto.
 372 Ditto.
 373 One pair of blankets.
 374 Two odd blankets.
 375 Crochet-work quilt.
 376 Two white counterpanes.
 377 Two ditto.

- Lot
378 Two white counterpanes.
379 Marseilles counterpane.
380 Large red satin eiderdown quilt.
381 Smaller ditto.
382 Small red satin eiderdown quilt.
383 Ditto.
384 Ditto.
385 Eiderdown quilt.
386 Ditto.
387 Ditto.
388 Ditto.
389 Ditto.
390 Two needlework bedspreads.
391 Bath blanket and counterpane.
392 Worked bed cover with blue figured satin border.
393 Two pairs of linen sheets (small).
394 Ditto.
395 Ditto.
396 Ditto.
397 Ditto.
398 Ditto.
399 Ditto.
400 Ditto.
401 Ditto (large).
402 Ditto.
403 Ditto.
404 Three linen sheets (large).
405 One pair ditto (extra large).
406 Ditto.
407 Ditto.
408 Ditto.
409 Ditto.
410 Ditto.
411 Ditto.
412 Ditto.
413 Two pairs of calico sheets.
414 Ditto.
415 Ditto.
416 One pair of large twill sheets.
417 Three twill sheets.
418 Pair of small twill sheets.
419 Three large calico sheets.
420 Large damask table cloth.
421 Ditto.
422 Ditto.
423 Ditto.
424 Ditto.
425 Ditto.

- Lot
426 Large damask table cloth.
427 Ditto.
428 Ditto.
429 Ditto.
430 Ditto.
431 Ditto.
432 Ditto.
433 Ditto.
434 Ditto.
435 Ditto.
436 Ditto.
437 Ditto.
438 Ditto.
439 Ditto.
440 Ditto.
441 Ditto.
442 Ditto.
443 Ditto.
444 Ditto.
445 Ditto.
446 Two damask table cloths.
447 Two damask table cloths (smaller).
448 Ditto.
449 Four damask sideboard cloths.
450 Ditto.
451 Ditto.
452 Ditto.
453 Ditto.
454 Ditto.
455 Ditto (various).
456 Ditto.
457 Twelve damask tray cloths.
458 Ditto.
459 Ditto.
460 Ditto.
461 Ditto.
462 Ditto.
463 Eight ditto (various).
464 Two bath sheets.
465 Three ditto.
466 Six bath towels.
467 Ditto.
468 Ditto.
469 Ditto.
470 Three ditto.
471 Ditto.
472 Four ditto.
473 Six toilet covers.

- Lot
 474 Six toilet covers.
 475 Ditto.
 476 Ditto.
 477 Ditto.
 478 Ditto.
 479 Ditto.
 480 Twelve face towels.
 481 Ditto.
 482 Ditto.
 483 Ten ditto.
 484 Six small bath towels.
 485 Twelve face towels.
 486 Ditto.
 487 Ten ditto.
 488 Eight roller towels.
 489 Twelve kitchen towels.
 490 Ditto.
 491 Ditto.
 492 Nine ditto.
 493 Fifteen small and two large huckaback towels.
 494 Six damask dining table slips.
 495 Ditto.
 496 Four larger ditto.
 497 Five ditto.
 498 Five ditto.
 499 Nine damask tray cloths.
 500 Two worked afternoon tea cloths.
 501 Four damask afternoon tea cloths.
 502 Four kitchen table cloths.
 503 Twelve linen pillow slips.
 504 Ditto.
 505 Seventeen assorted ditto.
 506 Twelve damask serviettes.
 507 Ditto.
 508 Ditto.
 509 Ditto.
 510 Ditto.
 511 Ditto.
 512 Ditto.
 513 Ditto.
 514 Ditto.
 515 Ditto.
 516 Ditto.
 517 Ditto.
 518 Ditto.
 519 Ditto.
 520 Ditto.
 521 Twenty-four ditto.

Lot

- 522 Seventeen damask serviettes.
 523 Twelve damask tray cloths.
 524 Fifty-five damask fringed d'oyleys.
 525 Four dozen small d'oyleys.
 526 Thirty-one lace and worked toilet mats.
 527 Two dozen lace and muslin antimacassars.
 528 Thirty-two ditto.
 529 Twelve worked antimacassars.
 530 Two sofa rugs and two blankets.
 531 Twelve linen shirts, dust sheets, and sundry linen.
 532
 533
 534
 535
 536 Two pairs of chintz window curtains.
 537 Bordered plush door curtain.
 538 One pair of chintz curtains, bed valances, etc.
 539 Pair of chenille window curtains.
 540 Pair of large curtains in figured silk, with bands.
 541 Ditto.
 542 Ditto.
 543 Coloured silk table cover, four aprons, towel, and two dust sheets.
 544 Chintz curtain valances, chair covers, etc.
 545 Sixteen holland saving covers.
 546
 547

END OF SECOND DAY'S SALE.

Third Day's Sale.

WEDNESDAY, JANUARY 29th, 1919.

Commencing at 10-30 a.m.

Ground Floor.

- Lct
- 548 Brown oak corner cupboard, fitted with four shelves and panelled doors.
 - 549 Brown oak dinner gong with beater.
 - 550 Fumed oak tray top table, fitted with undershelf.
 - 551 Chinese lacquer cabinet, fitted with six drawers, decorated with domestic scenes on panels.
 - 552 Handsomely carved mahogany settee, upholstered in tapestry, with loose cushion.
 - 553 Gilt occasional easy chair with circular back, upholstered in figured silk.
 - 554 Brass standard lamp with copper oil reservoir.
 - 555 Handsome rosewood card table with folding top, lined blue baize, inlaid and mounted in ormolu.
 - 556 Capital 5ft. carved mahogany hall table.
 - 557 Elegant gilt empire console mirror, 5ft. 6in. by 8ft. 3in.
 - 558 Alabaster vase on pedestal, 22in. high (damaged).
 - 559 Italian marble vase on pedestal, inlaid mosaic, 20in. high.
 - 560 Handsomely carved alabaster vase on pedestal, decorated birds and flowers, 25in. high.
 - 561 Ditto 18in. high.
 - 562 Alabaster vase on pedestal, 28in. high.
 - 563 An eight-day travelling clock, repeater chime, in leather case.
 - 564 Pair of Japanese vases, pair of Chinese vases, glass vase, and two match stands.
 - 565 Leather attaché case.
 - 566 Walnut octagonal occasional table on carved pillar support.
 - 567 Carved mahogany duet music stool, upholstered in silk tapestry.
 - 568 Pair of gilt fire screens with silk-worked panels, wreaths of flowers, on brass pole supports.
 - 569 Set of nine handsomely inlaid walnut marquetry chairs with shaped high backs, cabriole legs, loose seats with cretonne saving covers.
 - 570 Handsome 4ft. 3in. carved oak dower chest with carved panelled front and sides.
 - 571 Carved walnut settee with shaped and carved back, spring and hair stuffed, upholstered in blue silk needlework and plush.

- Lot
- 572 Handsome 6ft. 6in. richly carved and gilt console table with marble top.
- 573 Elaborately carved gilt framed console mirror, 9ft. by 6ft., for last lot
- 574 Pair of handsome ormolu six-light candelabra with cupid supports and vine decoration, 30in. high.
- 575 Heavy bronze vase, decorated with figure, 11in. high.
- 576 Handsome bronze figure, "The Dying Gladiator," on marble base, 23in. diam.
- 577 Bronze group, "Stags and Fawn."
- 578 Morocco writing case in leather.
- 579 Leather letter bag.
- 580 Antique mahogany corner whatnot, fitted with drawer.
- 581 Pair of antique ebonized and gilt fire screens with oval gilt framed water-colours, "Allegorical subjects," finely executed.
- 582 Ormolu mounted buhl pot stand.
- 583 Pair of carved mahogany shield back arm chairs.
- 584 Ditto.
- 585 Ditto.
- 586 Mahogany frame fire screen with horizontal and vertical sliding panels.
- 587 Carved old oak stool.
- 588 Antique mahogany frame high-back arm chair, upholstered in tapestry.
- 589 Inlaid marqueterie table with shaped top, fitted with two drawers, on cabriole legs, claw and ball feet.
- 590 A pair of shield banner screens with needlework panels, in gilt frames on carved wood gilt stands.
- 591 One metal music stand with brass pole.
- 592 Ormolu mounted inlaid walnut marqueterie work table, fitted with three drawers under.
- 593 Very handsome inlaid walnut marqueterie card table with folding top, carved cabriole legs, claw and ball feet, lined green baize, decorated with birds, flowers and figures.
- 594 Old oak chest with panelled front, fitted with two drawers under.
- 595 Elaborately carved black oak writing table, fitted with two drawers.
- 596 Two letter clips.
- 597 Pair of antique elaborately carved gilt frame wall mirrors, engraved figure decoration, 16½in by 6½in.
- 598 Carved oak wall bracket.
- 599 Italian marble double-handled vase on pedestal, decorated with Bacchanalian heads, 17in. high.
- 600 Ormolu mounted eight-day timepiece in walnut case.
- 601 Walnut stool with hair stuffed needlework top.
- 602 Italian marble mosaic chess table on marble column base.

- Lot
- 603 Valuable bronze figure, "Samson," after *Michael Angelo*, 27in. high.
- 604 Carved ivory screen, "The Bear Hunt," mounted on antlers.
- 605 Elegant ormolu mounted Empire clock, by *Vascher*, decorated with figures of children and olive wreaths.
- 606 E.P. mounted oak spirit tantalus with three cut bottles.
- 607 E.P. mounted oak lemonade and soda bottle stand fitted with lemon knife, ice pick, sugar bowl and sifter, and four spoons.
- 608 Nickel-plated toilet fixture.
- 609 Set of twenty-seven carved Chinese bone chessmen (imperfect).
- 610 Handsome 4ft. 3in. carved mahogany hall table with cabriole legs and lion-claw feet.
- 611 Puff billiard table and Pope Joan board.
- 612 Brass mounted jewel case and patent enema in case.
- 613 Rosewood dressing case and morocco covered lady's work box.
- 614 Table game in cover.
- 615 Pair of antique mahogany fire screens with silk panels.
- 616 Carved walnut stool with needlework top.
- 617 Ditto.
- 618 Ditto.
- 619 Handsome shaped top Chinese lacquer chess table, decorated with domestic scenes and figures, the top fitted with loose slab, forming chessboard, inlaid pearl panels enclosing backgammon board with drawer under, on carved pillar with dolphin feet.
- 620 Richly carved 9ft. brown oak sideboard, fitted with five drawers, two cupboards and cellarette under, with carved pilasters, lion and dolphin panels, inscribed "Anno, 1670."
- 621 Handsome fourteen-day bracket clock, by *Viner*, London, in carved oak case with oxidised dial, 22½in. high.
- 622 Antique tortoiseshell tea caddy, fitted with two bottles, on lion claw feet.
- 623 Pair of Empire ormolu two-light candelabra with Acanthus capitals, 20in. high.
- 624 Handsome pair of bronze vases, "Neptune and Faun," 18in. high.
- 625 Inlaid rosewood travelling hot-water footstool with zinc liner.
- 626 Ivory-mounted thermometer and bronzed candlestick.
- 627 Bronze copy of temple and carved wood font.
- 628 Oak book slide and Laplander's knife, in bone sheath.
- 629 Pair of Indian brass vases with covers, 7½in. high.
- 630 Pair of Benares vases, Benares tray and bouquet holder.
- 631 Brass vase with cover, 7in. high.
- 632 Olive wood camel and string box and carved Swiss figure ornament.

Lot

- 633 Pair of engraved teeth, by *H. M. A. Phillips*, "St. Helena" and "Napoleon's Tomb."
- 634 Pair of bronze candlesticks, 9in. high.
- 635 Pair of carved double spiral candlesticks, 13½in. high.
- 636 Pair of elegant brass four-light candelabra, decorated with female figures on columns, 25in. high.
- 637 Very handsome pair of ormolu mounted Empire seven-light candelabra, decorated with figure and griffin at base of plinth, 23in. high.
- 638 Copper coffee urn with spirit lamp.
- 639 Hand-painted angel on gilt panels, in Florentine frame.
- 640 Bronze figure, "Bacchus on Donkey," 8½in. high.
- 641 Pair of brass candlesticks, decorated cupids, 10in. high.
- 642 Pair of miniature fire screens on bronzed pillar supports.
- 643 Two morocco leather blotter cases.
- 644 Pair of massive brass fire dogs with horse and ball decoration.
- 645 Handsome Pollard oak shaped-top table, fitted with drawer, cabriole legs, claw and ball feet.
- 646 Antique carved gilt frame fire screen with needlework panel, "Landscape with Hawk."
- 647 Antique mahogany card table with folding top, lined green baize, with drawer and cabriole legs under.
- 648 Elaborately carved oak hat and umbrella stand with figure decoration, surmounted by stag's antlers.
- 649 Three old helmets with vizers and gauntlets.
- 650 Ormolu mounted marble eight-day timepiece, decorated with figures of children and bust of Socrates.
- 651 Bronze group on marble base, "Centaur carrying off Female," 18in. high.
- 652 Bronze figure, "Venus," 20in. high.
- 653 Handsome fourteen-day French timepiece in buhl case with ormolu mounts, by *T. Langlois*, Paris, with brass dial.
- 654 Capital 4ft. 3in. mahogany side table with cabriole legs and lion claw feet.
- 655 4ft. 3in. carved oak Dower chest with panelled top, front and sides.
- 656 Fox skin carriage rug.
- 657 Raccoon skin ditto.
- 658 Blue melton ditto, lined.
- 659 Ditto.
- 660 Very elaborately carved Indian hardwood centre table, decorated with domestic scenes in panels on border, the cornice richly carved and saw-pierced with bird, animal and leaf decoration, the pillar base decorated with cranes and lion head feet.
- 661 Japanese wood carving, female figure with birds, 33in. high.
- 662 Chinese lacquer card box, richly decorated, fitted with seven card boxes and covers, twelve counter trays, and pearl card counters.

- Lot
 663 Inlaid ivory sandal wood glove box and china inkstand.
 664 Ivory chessmen.
 665 Pigskin leather writing case.
 666 Lady's walnut workbox with needlework panel, "Spaniel."
 667 Brown oak stationery case, fitted with drawer.
 668 Small bronze horse and carriage and pen rack.
 669 Circular inlaid walnut curio cabinet, fitted with shelf and cupboard under, enclosing three drawers.
 670 4ft. rosewood oblong table.
 671 Light oak tool chest, fitted with well and two drawers under, with large quantity of tools.
 672 Case of thirteen double-spar auger bits, from $\frac{1}{4}$ - $\frac{1}{8}$ of an inch.
 673 Handsome 5ft. carved oak library table.
 674 Brown oak stationery case, fitted with folding doors.
 675 Carved oak brush box, pair of hand screens, and C.I. door stop.
 676 Pair of brass three-light candelabra, 23in. high, with Dresden figures attached 12 $\frac{1}{2}$ in. high.
 677 Antique oak tray-top two-tier dumb waiter on carved stand.
 678 Morocco leather dressing case, fitted with cut-glass silver mounted bottles.
 679 Silver-mounted writing set in case, consisting of paper knife, pen and seal.
 680 Pen case with leather case.
 681 Carved oak stool.
 682 Italian marble octagonal table, inlaid with mosaics of birds and flowers, on marble stand.
 683 Inlaid mahogany occasional table, fitted with undershelf.
 684 Three morocco leather floor hassocks.
 685 "Vapo" cresolene lamp and two antlers.
 686 P.C.-size film camera with ensign anastigmat lens, in leather case.
 687 Two hunting knives with leather sheaths.
 688 Six-chambered *Wilkinson & Webley* revolver, in oak case.
 689 Travelling chess in mahogany case with chessmen.
 690 Ditto.
 691 Six circular bevelled glass panels and eleven tiles.
 692 Box of foreign shells and wet and dry bulb thermometer.
 693 Three jardinieres and sundries.
 694 Rosewood case of seven razors and Swiss knife, fork and spoon, in sheath.
 695 Set of bone chessmen and dominos.
 696 Mosaic inkstand and metal stamp box.
 697 Two brass and one oak pen trays.
 698 Leather case, fitted with small hammer, vice, and six other tools.
 699 Five-chambered revolver in light oak case.
 700 Twelve-bottle homœopathic medicine case.
 701 Brass-mounted oak book slide, and carved wood card box.

- Lot
- 702 Brown oak inkstand, stationery case, and wooden food bowl.
- 703 Brown oak E.P. mounted cigar and cigarette box.
- 704 Pair of brass letter scales and nine brass weights.
- 705 Two alabaster vases (damaged).
- 706 Valuable upright grand full compass overstrung pianoforte, by *W. Hoffman*, in inlaid rosewood case, fitted with candle sconces.
- 707 Carved walnut music stool with revolving top.
- 708 6ft 6in. rosewood sideboard, fitted with china shelf and three mirror panels in back, and open shelves under.
- 709 Capital 3ft. 6in. walnut chest of two drawers, fitted with secretaire, with fall front, nine stationery drawers and pigeon holes.
- 710 Rosewood portfolio stand with brass lion claw feet.
- 711 Antique carved elm Elizabethan high-back chair, upholstered in needlework.
- 712 Small Japanese lacquer nest of five drawers.
- 713 Oblong walnut writing table with shaped top and drawer under.
- 714 Ormolu mounted Empire kingwood inlaid writing table, fitted with cabriole legs and drawer under.
- 715 Brown oak revolving bookcase, fitted with reading slope.
- 716 Antique oak gate-legged oval table, fitted with two fall leaves.
- 717 Handsomely carved walnut Prie Dieu chair, upholstered in needlework.
- 718 Antique carved elm arm chair with upholstered seat and back in needlework.
- 719 Saw-pierced steel fender with brass mounts and set of fire brasses.
- 720 Ditto.
- 721 Richly carved 4ft. 6in. rosewood sideboard, fitted with two china shelves and mirror panels in back, and three shelves under.
- 722 Walnut filing cabinet with two drawers.
- 723 Elaborately carved wood cabinet with cupboard and drawer under, decorated with figures.
- 724 Walnut two-leaf Pembroke table with carved legs.
- 725 Valuable full compass grand pianoforte, by *Erard*, in burr walnut case.
- 726 Carved walnut music stool with revolving top.
- 727 Antique carved walnut tea caddy, fitted with oval cut-glass sugar bowl and two tea boxes.
- 728 A 2 $\frac{3}{4}$ in. astronomical telescope with three day and one night eye pieces and finder, on brass tripod, in mahogany case.
- 729 A four-draw deer-stalking telescope in leather case.
- 730 A dumpy level, by *W. H. Harling*, in mahogany case, with tripod and staff (nearly new).
- 731 A mahogany tripod stand.

- Lot
- 732 Antique oak table, 3ft. 2in. by 2ft. 2in.
- 733
- 734
- 735 A valuable old oak 4ft. 6in. Jacobean chest of ten drawers, with carved and panelled fronts, panelled sides, and brass drop handles.
- 736 A capital 16ft. 6in. mahogany extending dining table, with five loose leaves.
- 737 A 4ft. 6in. carved oak chest, with panelled front, sides and top.
- 738 A 4ft. 6in. carved brown oak writing table, fitted with drawer and lion head feet.
- 739 A mahogany arm chair, upholstered in morocco.
- 740 A capital four-fold embossed and painted leather screen, in painted frame.
- 741 Ditto in oak frame.
- 742 A 3ft. 3in. brass mounted steel fender and set of steels.
- 743 A 4ft. ditto.
- 744 A 4ft. 6in. ditto.
- 745 Four brass curtain rods.
- 746 A valuable antique wrought-iron Spanish treasure chest with hand-painted panels and massive lock, 30in. by 20in. by 18in.
- 747 An old oak Dutch sea chest, fitted with handsomely wrought iron bands, lock plate, with domed top and massive spring lock. Size: 4ft. by 2ft. by 2ft. 6in.
- 748 A capital 3ft. 6in. carved oak chest with carved panelled front and sides.
- 749 A valuable barometer and thermometer, by *Negretti and Zambra*, in light oak case.
- 750 A carved oak Prie Dieu chair with needlework seat and back.
- 751 A handsome 6ft. 6in. Chesterfield couch, upholstered in silk tapestry with cretonne saving cover.
- 752 A set of fire steels.
- 753 Two fire brasses and four irons.
- 754 An antique Pollard oak shaped tray-top occasional table.
- 755 A well-modelled Carrara marble figure on pedestal, "Eros," 5ft. 6in. high.
- 756 Ditto, "Psyche," ditto.
- 757 A well-modelled Carrara marble figure, "Female with necklace," 3ft. 6in. high.
- 758 Carved mahogany dining room suite, upholstered in crimson morocco, and consisting of two carving chairs and nine small chairs.
- 759 Three carved mahogany chairs, upholstered in morocco.
- 760 Four white and gold drawing room chairs, upholstered in figured silk tapestry.
- 761 Two window seat cushions, upholstered in silk damask.
- 762 Bordered turkey carpet, 12ft. by 12ft.

- Lot
- 763 Bordered Axminster carpet, 12ft. by 13ft. 6in.
- 764 Bordered Brussels carpet and underfelt, 16ft. by 13ft.
- 765 Crimson Axminster landing carpet, 8ft. 9in. by 9ft.
- 766 Ditto 9ft. by 6ft.
- 767 Crimson Axminster corridor carpet, 13ft. by 3ft. 6in.
- 768 Ditto 11ft. by 3ft. 6in.
- 769 Pair of antlers on shield.
- 770 A brass-mounted steel fender.
- 771 A capital 4ft. 3in. oak linen chest, fitted with two drawers.
- 772 Two bronze letter balances, pair of letter scales, and weights and letter clip.
- 773 Two match stands, stamp box, and plaster boy.
- 774 Jardiniere, pair of candlesticks, and sundries.
- 775 Ebony walking stick inlaid with mother-of-pearl
- 776

Office Furniture.

- 777 A Roneo copying machine.
- 778 A capital walnut 2ft. 6in. filing cabinet, fitted with eighteen drawers.
- 779 An oak two-drawer card index.
- 780 An oak four-drawer filing cabinet.
- 781 A costly *Elliott & Hatch* book typewriter, fitted with 3ft. brown oak roll top desk, with two drawers and box of accessories.
- 782 Handsome 4ft. 6in. mahogany pedestal shaped top writing table, fitted with two cupboards under.
- 783

Sporting Items.

- 784 A salmon rod, by *J. Enricht & Son*, Castle Connell, in case, and reel with line.
- 785 A trout ditto, and three bottom rods.
- 786 A landing net and creel.
- 787 A rook rifle, by *Holland & Holland*, in case.
- 788 A valuable twelve-bore hammerless breech loading gun, by *Holland & Holland*, in leather case.
- 789 Ditto.
- 790 A leather gun case and waterproof ditto.
- 791 An air gun, regulation pattern, B. S. A.
- 792 An old muzzle loading gun.
- 793 Two leather cartridge cases.
- 794 A game bag and two holders.
- 795 Two shooting seats and walking stick.
- 796 Two cavalry swords in steel sheaths.
- 797 Ditto.

- Lot
 798 A cavalry sword, steel sheath and leather case, and silver-mounted pouch.
 799 Three pairs of foils and two wire masks.
 800 Bow and arrows with case.
 801 Ten barbed Egyptian arrows.
 802

Antique Tapestry.

- 803 Valuable panel of antique wall tapestry, "Europa and the Gods," with floral border, 9ft. by 12ft. 6in., in fine condition
 804 Valuable panel of antique wall tapestry, "Mercury and Jupiter," 9ft. by 8ft. 3in., in fine condition.

Oil Paintings.

(By or attributed to).

Schalcken.

- 805 "Woman in Cellar holding Candle" (on panel), 9½in. by 7½in.
 806 "Lady with Candle in hand looking out of Window," 12½in. by 10½in.

Unknown.

- 807 "Sunset, with Farm Buildings and Trees," 24in. by 20in.
 808 "Piebald Mule," 19in. by 23in.
 809 "Pair of Horses," 19in. by 23in.
 810 Ditto 10in. by 13in.
 811 "Lady in Garden," 19½in. by 15½in.
 812 "Landscape with Cathedral," 14in. by 17½in.
 813 "Nell Gwynne with pearl bead necklace, leaning on hand," 29½in. by 24½in.
 814 "Mary, wife of William III.," 29½in. by 24½in.
 815 "Gentleman in long brown wig," 29in. by 24in.
 816 "Group of three horses: Brunette, Tourist, and Sambo," 27½in. by 40in.
 817 "The Holy Family," 8in. by 6in.

E. W. Webb, 1848.

- 818 "Group of two horses, Clown and Mercury," 27½in. by 35½in.

E. Bristow.

- 819 Pair of "Dead Game," 6in. by 8in.

Unknown.

- 820 Pair of panels (oval).
 821 "Cupid with Doves" (on china), 9in. by 7in.

- Unknown.
- Lot
822 "Cupid with Doves" (circular), 36in.
823 "Figure Subject," 28in. by 22in.

Snyders.

- 824 "Monkeys with overturned basket of Fruit on table," 28½in.
by 42in.

Unknown.

- 825 "Scene from Hudibras," 34in. by 43in.
826 Ditto (companion picture), 34in. by 43in.
827 "Group with Soldier in Plate Armour," 23in. by 27½in.
828 "Landscape with Pony and Sheep, Dog and Goat, Bull,
Sheep and Goat," 46in. by 65in.
829 "Street Scene with Memorial Cross," 15in. by 13in.
830 "The Bear Hunt," 66in. by 95in.
831 "Gentleman holding Helmet on Table," 48½in. by 36½in.
832 "Classical Landscape with figures in foreground," 32½in. by
46in.
833 "Landscape with Castle Ruins and Boy Fishing in fore-
ground," 32in. by 42in.
834 "The Fish Dealer," 32in. by 65in.

E. Hannard.

- 835 "Dead Partridge," 12in. by 10in.

Unknown.

- 836 "Five Children at Play," 21½in. by 26in.
837 "Virgin and Child," 20½in. by 17in.
838 "Landscape with Figures," 14½in. by 16½in.
839 "Portrait of Lady," 17½in. by 11½in.
840 "Virgin Mary with Lamb, crowned by Angel (in Florentine
frame), 35in. by 32½in.

G. Stevens, 1845.

- 841 "Dead Game, Hare and Partridges," 29½in. by 24in.

Unknown

- 842 "Dutch Kitchen, interior with figures," 26½in. by 21½in.
843 "Man and Boy with Bird's Nest," 29in. by 24in.
844 "Boy with Guinea Pigs," 35in. by 27in.
845 "Virgin and Child," 29in. by 21½in.
846 "Boy with Bagpipes," 35in. by 27in.
847 "Coast Scene with Fishermen, Women and Boys," 27½in.
by 35½in.

Water-Colours.

- Lot
 848 "Lake with Silver Birches," 22in. by 15in.
 849 "Female with Casket," 6in. by 7in.
 850 "Portrait" (oval).

Engravings.

- 851 Set of four coloured Prints, by *J. Harris*, after *H. Alken*,
 "The First Steeplechase on Record."
 852 Set of four aquatints, by *T. Sutherland*, after *H. Alken*, "The
 Death," "Meeting at Cover," "Breaking Cover," and
 "Full Cry."

END OF THIRD DAY'S SALE.

Fourth Day's Sale.

THURSDAY, JANUARY 30th, 1919.

Commencing at 10-30 a.m.

Third Floor.

- Lot
- 855 3ft. 3in. mahogany bedstead and box spring mattress.
 - 856 Wool mattress.
 - 857 Three pillows.
 - 858 3ft. mahogany bedstead.
 - 859 Wool and hair mattress.
 - 860 Bolster and pillow.
 - 861 Folding chair, bedstead, and three cushions.
 - 862 Nest of six drawers in walnut, 1ft. 10in. by 1ft. 6in. by 4ft.
 - 863 Butler's wardrobe in mahogany, with drawer under, and containing bed 3ft. 3in. by 1ft. 9in. by 6ft.
 - 864 4ft. mahogany toilet table.
 - 865 Toilet glass in mahogany frame.
 - 866 Sundry toilet ware.
 - 867 Four-tier 4ft. mahogany chest of five drawers with rounded corners.
 - 868 Toilet glass in mahogany frame.
 - 869 4ft. mahogany toilet table, fitted with two drawers.
 - 870 Sundry toilet ware.
 - 871 Mahogany dressing table, fitted with drawers, 3ft. 3in. by 1ft. 10in.
 - 872 Three chairs with cane seats and backs.
 - 873 Handsome 7ft. 6in. mahogany wardrobe, having six drawers in centre and hanging cupboards at sides.
 - 874 Toilet glass, 23in. by 17in., in mahogany frame, with candle holders.
 - 875 Two wicker clothes baskets.
 - 876 Arm chair in oak, upholstered.
 - 877 Ditto.
 - 878 Mahogany wash stand with marble top.
 - 879 Pair of mahogany wash stands with marble tops.
 - 880 Two mahogany bidets.
 - 881 Medicine chest in mahogany, fitted with two drawers and number of bottles.
 - 882 Axminster hearthrug.
 - 883 Two strips of carpet.
 - 884 Three chairs with cane seats and ornamental backs.

- Lot
- 885 Night stool in mahogany, with special fittings.
- 886 Handsome mahogany three-tier chest of six drawers, supported by turned pillars, 4ft. by 2ft.
- 887 Toilet glass in ornamental mahogany frame.
- 888 Toilet glass in mahogany frame.
- 889 Large blue and white foot pan and sundry toilet ware.
- 890 Mahogany towel rail and set of fire irons.
- 891 Leather suit case.
- 892 Ditto.
- 893 Spanish mahogany 7ft. 6in. wardrobe, enclosed by pair of panelled doors, having five sliding trays, with nest of four drawers on either side.
- 894 3ft. all-brass bedstead with box spring mattress.
- 895 Hair mattress.
- 896 Pair of mahogany 3ft. 6in. toilet tables, each fitted with two drawers.
- 897 Toilet glass in mahogany frame.
- 898 Ditto.
- 899 Toilet ware in blue and white.
- 900 3ft. 6in. brass and iron bedstead with box spring mattress
- 901 Hair mattress.
- 902 Wool and hair mattress.
- 903 Bolster and two pillows.
- 904 Folding "Madeira" arm chair with leg rest.
- 905 Leather suit case.
- 906 Dressing bag with silver-mounted fittings.
- 907 Set of four brass water cans.
- 908 Two brass candle holders.
- 909 Ditto.
- 910 Handsome bordered pile carpet, 7ft. by 10ft.
- 911 Two 6ft. rugs to match.
- 912 Lantern in japanned case.
- 913 Pair of 8in. brass candlesticks.
- 914 Pair of 9in. ditto.
- 915 Pair of ditto.
- 916 Pair of Indian brass vases, two small bowls, clock, and brass candlestick.
- 917 4ft. mahogany kneehole dressing table with two drawers.
- 918 Large leather portmanteau.
- 919 Mahogany luggage rest.
- 920 Openwork steel fender.
- 921 Two sets of fire irons.
- 922 3ft. brass and iron bedstead with box spring mattress.
- 923 Wool mattress.
- 924 Hair mattress.
- 925 Bolster and pillow.
- 926 Mahogany towel rail, china foot pan, and large jug.
- 927 Adjustable invalid's chair with foot rest and cushion.

- Lot
- 928 Pair of 4ft. toilet tables in mahogany, each fitted with two drawers, the washstand having marble top and back.
- 929 Sundry toilet ware.
- 930 Bedside cupboard in mahogany.
- 931 Toilet glass in mahogany frame, supported by turned pillars and ornamental base.
- 932 Five birch chairs with cane seats.
- 933 3ft. all-brass bedstead with woven wire spring mattress.
- 934 Hair mattress.
- 935
- 936
- 937 Hair mattress.
- 938 Feather bolster and pillow.
- 939 Large leather kit bag.
- 940 Mahogany bidet and fittings.
- 941 Openwork steel fender and set of fire irons.
- 942 Mahogany luggage rest.
- 943 Engraving, after *Landseer*, "Bolton Abbey in the Olden Time," in bird's-eye maple frame, 32in. by 28in.
- 944 Engraving, after *Landseer*, 37in. by 26in., in bird's-eye maple frame.
- 945 Set of four coloured prints, "The Great Industrial Exhibition of 1851," in bird's-eye maple frames.
- 946 Pair of engravings, after *Richard Ansdell*, "Partridge and Rabbit Shooting," in gilt frames.
- 947 Engraving, "The Hon. Robert Henry Clive," and two others.
- 948 Four-tier bamboo corner whatnot.
- 949 Mahogany night stool and bed steps.
- 950 Small mahogany coffee table.
- 951 Four-fold screen.
- 952 Handsome mahogany 7ft. 6in. wardrobe with hanging cupboard in centre, and sliding trays at sides, the whole enclosed by panelled doors with massive circular handles.
- 953 5ft. 6in. mahogany half-tester bedstead with box spring mattress.
- 954 Hair mattress.
- 955 Bolster and pillow.
- 956 Handsome toilet table in walnut, fitted with two drawers, 4ft. 6in. by 2ft. 6in.
- 957 4ft. 3in. mahogany toilet table, fitted with two drawers.
- 958 Toilet ware.
- 959 Ditto.
- 960 Mahogany 6ft. wardrobe with six sliding trays and hanging cupboard at side.
- 961 Electric lighted clock with bell and battery.
- 962 Clock with gate ornament on mahogany stand.
- 963 Large wooden box for logs or peat.
- 964 Couch.

Lot

- 965 Handsome old Spanish mahogany 8ft. 6in. wardrobe, having chest of six drawers with circular ends in centre, and hanging cupboards at sides.
- 966 Two corner brackets in ebony, two prints in frames, stamp box and inkstand.
- 967 Arm chair, upholstered in velvet.
- 968 Wicker easy chair, covered in chintz and two cushions.
- 969 Ditto.
- 970 Two armed cane-seated chairs.
- 971 Three coved-back cane-seated chairs.
- 972 Large wool hearthrug.
- 973 Japanned hip bath.
- 974 Japanned sponge bath.
- 975 Two chairs with cane seats and folding table.
- 976 Handsome mahogany wardrobe, fitted with eight sliding trays and hanging cupboard at side. 6ft. by 1ft. 10in. by 6ft. 6in.
- 977 Bedside cupboard in mahogany.
- 978 Mahogany wardrobe, fitted with sliding trays and hanging cupboard at side, 5ft. 6in. by 1ft. 9in. by 6ft.
- 979 4ft. mahogany toilet table, fitted with two drawers.
- 980 Ornamental toilet glass in mahogany frame.
- 981 4ft. mahogany washstand with marble top and back, fitted with two drawers.
- 982 Sundry toilet ware.
- 983 Foot pan and sundry toilet ware.
- 984 Double-ended couch ottoman.
- 985 Mahogany bedside cupboard.
- 986 Two mahogany bidets.
- 987 Set of three mahogany bed steps.
- 988 Leather case containing two ivory-backed hair brushes, and two clothes brushes; also two ivory-backed hair brushes, button hook, paper knife, etc.
- 989 Spirit flask in leather case, leather letter case, writing pad, etc.
- 990 Toilet glass in mahogany frame.
- 991 Medicine cupboard.
- 992 Night commode and bed steps in mahogany.
- 993 Pedestal cupboard in mahogany.
- 994 Mirror on pierced metal frame.
- 995 Two ditto.
- 996 Japanned hip bath.
- 997
- 998

Second Floor.

- 999 Rosewood cheffonier with mirror back and three cupboards, 5ft. by 1ft. 3in.

- Lot
- 1000 Three-tier dwarf bookcase, in mahogany, with projecting centre, supported by four spiral columns and fitted with shelves, 10ft. by 1ft. 6in.
- 1001 Carved rosewood bookcase, having marble top and fitted with drawers and three shelves under, 4ft. by 1ft. 6in.
- 1002 Three-tier oak dinner waggon, supported by four spiral pillars, with carved back, 5ft. by 1ft. 4in.
- 1003 Rosewood table on handsome base, 3ft. 9in. by 2ft.
- 1004 Mahogany office table, fitted with four drawers, 5ft. by 2ft. 6in.
- 1005 Old two-leafed mahogany table, 4ft. 6in. by 3ft. 6in.
- 1006 Ditto.
- 1007 Small mahogany dining table with extension, 4ft. 3in. by 4ft. 6in.
- 1008 Cheffonier in walnut with shaped top, having centre enclosed by two panelled doors, supported by spiral columns, the wings being enclosed by glass doors and fitted for ornaments, the back also being fitted with three plate glass mirrors and ornamental shelves, supported by spiral columns, 7ft. by 1ft. 6in.
- 1009 Ditto.
- 1010 Mahogany table, fitted with drawer, 4ft. 3in. by 2ft.
- 1011 Octagonal table in oak, supported by massive carved column with dragon's head feet, 4ft. 3in. by 4ft. 3in., with extension to make square table.
- 1012 Mahogany toilet table, 4ft. 6in. by 2ft.
- 1013 Ditto.

Engravings.

- 1014 Pair of proof engravings in oak frames, after *Gustave Dore*.
- 1015 Engraving, "Christ," in oak frame.
- 1016 Pair of proof engravings, after *Gustave Dore*, "Biblical subjects," in oak frames.
- 1017 Ditto.
- 1018 Ditto.
- 1019 Ditto.
- 1020 Ditto.
- 1021 Ditto.
- 1022 Large proof engraving, "Gambling Scene," after *Gustave Dore*, in oak frame.
- 1023 Pembroke table in mahogany with drawer 3ft. by 2ft. 9in.
- 1024

Basement.

- 1025 Two sets of fire irons.
- 1026 Ditto.
- 1027 Three-tier painted chest of drawers, 3ft. by 1ft. 9in.
- 1028 Three-tier painted chest of four drawers, 3ft. 4in. by 1ft. 6in.
- 1029 Ditto.

- Lot
- 1030 Painted dressing table with drawer and wash stand.
- 1031 Handsome old oak cupboard, 4ft. by 2ft. by 5ft. 10in., the top enclosed by two panelled doors having three drawers under fitted with brass mounts.
- 1032 Three paper baskets and letter case.
- 1033 Linen press with drawer.
- 1034 Two looking glasses in birch frames.
- 1035 Clock in oak case, by *Cooper, Son & Co.*, Worcester.
- 1036 Racquet press and three tennis racquets.
- 1037 Racquet press and two tennis racquets.
- 1038 Two looking glasses in birch frames.
- 1039 Ditto.
- 1040 Two wicker clothes baskets.
- 1041 Ditto
- 1042 Specimen case containing "Fox Coming from Earth."
- 1043 Collector's chest of seven drawers containing large variety of birds' eggs.
- 1044 Nest of six drawers in deal, 1ft. 3in. by 9in. by 2ft. 3in.
- 1045 Wire fender guard with brass rim and two towel rails.
- 1046 Toilet glass in frame and two towel rails.
- 1047 Three circular stools.
- 1048 Two looking glasses in frames.
- 1049 Pair of 3ft. mahogany toilet tables, each fitted with two drawers.
- 1050 Mahogany bookcase and medicine cupboard.
- 1051 Fender with brass rim and three wire fire guards.
- 1052 Cupboard, in mahogany, with drawer under, 2ft. 8in. by 1ft. 9in. by 4ft. 6in.
- 1053 Four-tier painted chest of five drawers, 3ft. 4in. by 1ft. 9in.
- 1054 Ditto 3ft. 2in. by 1ft. 5in.
- 1055 Folding birch chair with cane seat and back.
- 1056 Painted two-tier washstand with drawers.
- 1057 Two painted washstands.
- 1058 Oak coal vase.
- 1059 Painted knee-hole dressing table, fitted with five drawers, 3ft. 9in. by 1ft. 9in., and washstand fitted with drawer and two cupboards to match.
- 1060 Toilet glass in birch frame.
- 1061 Ditto.
- 1062 Wire fender with brass rim and two fire guards.
- 1063 Painted dressing table.
- 1064 Two mahogany towel airers.
- 1065 Four wire fire guards.
- 1066 Painted gent's wardrobe, the top fitted with four sliding trays, with four drawers under, 3ft. 10in. by 2ft. by 6ft. 6in.
- 1067 Four-tier oak corner bracket.
- 1068 Three towel rails.

- Lot
 1069 Three-tier painted chest of four drawers, 2ft. 10in. by 1ft. 10in.
 1070 Four-tier painted chest of five drawers, 3ft. 8in. by 1ft. 10in.
 1071 Painted washstand with two drawers and child's chair.
 1072 Two painted toilet tables with drawers.
 1073 Two japanned coal vases with covers.
 1074 Wire fire guard with brass rim.
 1075 3ft. 6in. four-tier painted chest of five drawers.
 1076 Ditto.
 1077 Four kitchen chairs.
 1078 Steel fender and iron ditto (damaged).
 1079 Two japanned coal vases with covers.
 1080 Painted toilet table with two drawers, and wicker clothes basket.
 1081 Five-tier painted chest of six drawers, 3ft. 8in. by 1ft. 10in.
 1082 Set of four steps and oak stool.
 1083 Japanned bath and cover.
 1084 Three-tier painted chest of three drawers, 3ft. by 1ft. 9in.
 1085 Four-tier painted chest of five drawers, 3ft. 6in. by 1ft. 9in.
 1086 Pair of painted toilet tables.
 1087 Japanned coal vase and cover.
 1088 Small oak linen press.
 1089 Two copper and one brass fern bowls.
 1090 Three-tier painted chest of three drawers, 3ft. by 1ft. 9in.
 1091 Set of three mahogany bed steps and night stool.
 1092 Two painted toilet tables.
 1093 Two larger ditto.
 1094 Mahogany toilet table with drawer, and mahogany towel rail.
 1095 Painted dressing table with drawer, and set of two steps.
 1096 Lady's dress stand.
 1097 Set of iron bedsteads.
 1098 Ditto.
 1099 Five birch chairs with cane seats.
 1100 Six ditto (various).
 1101 Two circular-backed chairs and three others with ornamental backs.
 1102 Four chairs with cane seats.
 1103 Circular oak table, 3ft. 11in. diam.
 1104 Ditto 3ft. 6in. diam.
 1105 Three bracket lamps.
 1106 Three massive brass lamps.
 1107 Three lamps.
 1108 Three lamps and sundries.
 1109 Circular oak table, 2ft. 8in. diam.
 1110 Large circular table in mahogany, fitted with eight drawers, and standing on handsome base, 4ft 3in diam.
 1111 4ft. mahogany toilet table.
 1112 3ft. 4in. ditto.

- Lot
- III3 4ft. mahogany toilet table.
- III4 3ft. 8in. ditto.
- III5 Ditto.
- III6 Old mahogany flap table, 4ft. 6in. by 3ft.
- III7 Trestle table and painted dressing table with drawer.
- III8 Pair of arm chairs in mahogany.
- III9 Mahogany tray stand.
- II20 Two pierced iron fenders with brass rims.
- II21 Two iron fenders.
- II22 Ditto.
- II23 Three-division knife box, in mahogany, with brass handle.
- II24 Bait can and brass lamp and knife box.
- II25 Primus stove and outfit and "Alformant" disinfector.
- II26 Foot pan, enamelled pail with cover, and bed pan.
- II27 Coal vase, two stools, and sundries.
- II28 Oak hat stand with mirror and brush box.
- II29 Old grandfather clock, by *Broadway*, in oak case, with painted dial showing changes of the moon, 8ft. high.
- II30 Handsome oak cupboard, the top enclosed by folding doors and fitted with three shelves with seven drawers, a cupboard, and two trays under, 6ft. by 1ft. 7in. by 6ft. 6in.
- II31 Two large globes of the world on pedestals.
- II32 Four-tier painted chest of five drawers, 3ft. 6in. by 1ft. 9in.
- II33 Two-fold fire screen, painted with magpies, etc.
- II34 Large box for peat or wood.
- II35 Ditto.
- II36 Butler's tray and stand in mahogany.
- II37 Settee in mahogany, hair stuffed, 6ft. 8in.
- II38 Easel.
- II39 Bamboo easel, tray, and three-fold screen.
- II40 3ft. mahogany chest of two drawers with brass bound ends.
- II41 Croquet set in case (incomplete), two cricket bats, etc.
- II42 Croquet set in case (incomplete).
- II43 Large deal box.
- II44 Pic-nic basket and outfit, comprising stove heater, kettle, enamelled dish with plated top, two plated boxes, flask with plated mount, cups and saucers, knives and forks, etc.
- II45
- II46 Pic-nic basket and outfit, comprising eight horn cups, three glasses in wicker covers, knives, forks, spoons and plates.
- II47 Thermos food cabinet, comprising two enamelled dishes with covers, in padded air-tight case.
- II48 Hand sewing machine, by *Singer*, complete in walnut case.
- II49 Larger ditto.
- II50 Avery's weighing machine.
- II51 Large meat safe.
- II52 Four hammock chairs.
- II53 Two copper lamps, supported on wrought-iron pedestals.

Lot

- 1154 Madeira basket arm chair and leg rest.
 1155 Slope desk and mahogany tray.
 1156 Large brass-bound mahogany writing desk and leather paper
 case.
 1157 Pierced iron fender with brass rim.
 1158 Ditto.
 1159 Ottoman, towel rail, and sundries.
 1160 Royal patent water filter.
 1161 Meat safe and sundries.
 1162
 1163

Cooking Utensils.

Copper, Pewter, etc.

- 1164 Two large pewter meat dishes.
 1165 Three pewter dishes and two plates.
 1166 Seven pewter dishes.
 1167 Twelve pewter plates.
 1168 Ten ditto.
 1169 Pewter jug with cover and four plate covers.
 1170 Pewter moulds, pepper castors, etc.
 1171 Coffee grinder, by *A. Kenrick & Sons*.
 1172 Wood bowl, eleven wood plates, spoon and fork.
 1173 Salter's balance scales.
 1174 Patent shredding machine.
 1175 Brawn press and enamelled vessel with cover.
 1176 *Marshall's* patent freezer, etc.
 1177 *Marshall's* patent ice cave and riddle.
 1178 Two carriage foot warmers.
 1179 Two brass maslin kettles.
 1180 Brass preserving pan, 11in.
 1181 Copper stew pan with cover, 11in.
 1182 Ditto 13in.
 1183 Large copper stew pan with cover, 22in. by 15in.
 1184 Three copper saucepans (two with covers).
 1185 Set of four copper saucepans with covers (in sizes).
 1186 Ditto.
 1187 Set of five ditto.
 1188 Copper breakfast warmer and lamps.
 1189 "Bain Marie" with ten pots and tray.
 1190 10in. copper stewpan with cover.
 1191 Ditto.
 1192 9in. ditto.
 1193 9½in. copper stewpan with cover and two handles.
 1194 10in. copper stock pot with cover.
 1195 Two copper kettles.

- Lot
 1196 Large copper bowl.
 1197 Four copper frying pans.
 1198 Ditto.
 1199 Ditto.
 1200 Large oval copper stewpan with cover, 14in. by 9in.
 1201 Large circular copper preserving pan with two handles, 15in. diam.
 1202 Four copper moulds.
 1203 Ditto.
 1204 Ditto.
 1205 Five copper cake tins.
 1206 Two copper moulds and sundry small ditto and spoon.
 1207 Large copper stewpan with cover, 12in. diam.
 1208 Ditto 12in. diam.
 1209 Set of three jacketted copper hot water supply cans (in sizes).
 1210 9½in. bi-metal soup pan and cover.
 1211 Bi-metal roasting dish.
 1212 9in. copper stewpan and cover.
 1213 Large fish kettle and cover.
 1214 Smaller ditto.
 1215 Copper coal vase.
 1116 Ditto.
 1117 Coal vase with scoop.
 1118 Sundry copper covers to saucepans, etc.
 1219 Two copper jugs.
 1220 Copper warming pan.
 1221 Ditto.
 1222 Number of moulds.
 1223 Canisters, etc.
 1224 Four candlesticks and sundries.
 1225 Large enamelled flour jar with cover.
 1226
 1227
 1228

END OF FOURTH DAY'S SALE.

NOTE! The Fifth Day's Sale, comprising the

LIBRARY OF BOOKS,

will be held on the same Premises on Wednesday, Feb. 5th, commencing at 10-30 a.m. (See separate Catalogue).

On View on Tuesday, February 4th, from 10-0 to 3-0 p.m.



