

## **Sales catalogue: Ward, Price & Co**

### **Publication/Creation**

24 May - 25 May 1921

### **Persistent URL**

<https://wellcomecollection.org/works/px6aup6x>

### **License and attribution**

This work has been identified as being free of known restrictions under copyright law, including all related and neighbouring rights and is being made available under the Creative Commons, Public Domain Mark.

You can copy, modify, distribute and perform the work, even for commercial purposes, without asking permission.



Wellcome Collection  
183 Euston Road  
London NW1 2BE UK  
T +44 (0)20 7611 8722  
E [library@wellcomecollection.org](mailto:library@wellcomecollection.org)  
<https://wellcomecollection.org>

HISTORIC  
GWYDYR CASTLE,  
CARNARVONSHIRE.



The South Front.

24 V. 21

Auctioneers :

WARD PRICE & CO.,  
Auctioneers, Valuers, and  
Estate Agents,  
83, WESTBOROUGH,  
SCARBOROUGH.

ANTIQUE SECTION.



Price 2/6 to admit two  
persons only to view.



# GWYDYR CASTLE.

The Ancestral Home of the Ancient Wynn Family.

---

1½ miles from Llanrwst L. & N.W. Railway Station, with easy access from Chester, and 28 miles Camarvon.

---

ILLUSTRATED CATALOGUE of the VALUABLE CONTENTS  
OF THIS

Important and Historic Mansion,

Embracing a VERY RARE and VALUABLE COLLECTION of FINE

## XVI to XVIII CENTURY FURNITURE

In Marqueterie and Finely Carved Oak, Walnut, Mahogany, and Satinwood,  
and including SEVERAL SETS of CHAIRS and STATE BEDSTEADS,  
Two Very Valuable and Important GOBELINS and BRUSSELS TAPESTRIES,  
Several Fine Examples of Petite Point, Old Needlework and Silk PICTURES,  
Valuable Specimen Set of ENAMELLED BOHEMIAN GLASS, also  
Four Unique Sets of JACOBEAN PERIOD BRASS FIRE DOGS.  
Valuable Carved BURGUNDIAN and other PANELS and GOTHIC FIGURES,  
and a few pieces of

**Antique Armoury, XI & XV Century Bronzes, Sheffield Plate, Carpets and Rugs,  
Old Oil Paintings and Mezzotints,**

Two Very Valuable PANELLED ROOMS of TUDOR and JACOBEAN PERIODS,  
with Magnificent Overmantels and Oak Beamed and Panelled Ceilings,  
and Old English and Spanish DECORATED LEATHER FRIEZES,

WHICH MESSRS.

---

## WARD PRICE & CO.

---

Have been honoured with instructions to SELL BY AUCTION, without reserve, in a  
MARQUEE in the CASTLE GROUNDS, on

**TUESDAY and WEDNESDAY, 24th and 25th MAY, 1921,**  
At 1 p.m. each day.

---

The Modern Furnishings and SMALL WARE, including a Very Fine Oak  
**Bedroom & Sitting Room Suite used by H.R.H. A.E. Prince of Wales**  
on his Tour to India,

**On THURSDAY, 26th MAY, 1921,**  
At 11 o'clock a.m. precisely.

The Collection will be on View on Friday and Saturday, 20th and 21st May next. Admission will be by this Catalogue only, and such Catalogue will only admit two persons. This rule will be strictly adhered to. A private view can be arranged by appointment, on Thursday, 19th May, for those ladies and gentlemen who are unable to view on the public view days.

Separate Catalogues for the Modern Furnishings, price 6d. each.

These Catalogues, price 2/6 each; other Catalogues and further particulars, may be obtained of the Auctioneers at the Castle on the view days, or at the

**Head Offices: 83, WESTBOROUGH, SCARBOROUGH.**

## Conditions of Sale.

- I.—The highest bidder in time to be the purchaser, the Auctioneer, however, reserves to himself the right to bid, to accept or refuse any person's bidding or biddings, and to withdraw, divide, or re-arrange any lot and should any dispute arise between two or more bidders respecting any lot, the lot in dispute shall be put up again and re-sold.
- II.—The advance upon the biddings to be regulated by the Auctioneer and no bidding to be retracted or withdrawn after it has been received. Purchasers to give their names and places of abode to the Sale Clerk, and to pay down 25 per cent. on the amount of the purchase-money if required, and the remainder of the purchase-money on receipt of invoice and before delivery of the goods.
- III.—Each lot to be at the purchaser's risk from the fall of the hammer; to be removed with all faults, defects, and errors of description, at the expense of the purchaser **WITHIN TWO DAYS OF THE SALE**, but should any purchaser obtain his goods before payment of the account, the receipt of the same by him shall be a binding contract for the payment of the account, together with interest after the rate of 7 pounds per cent. per annum until settlement.
- IV.—All sales shall be cash transactions at the fall of the hammer; and, notwithstanding, a bill of statement may be delivered to the purchaser for his or her convenience; no stamped receipt shall be given or required, except at the expense of such purchaser.
- V.—No property to be removed during the hours of sale unless paid for at the fall of the hammer, and with the consent of the Auctioneer.
- VI.—All disputes whatever respecting any lot or lots, or the sale and delivery of the goods, shall be determined by the Auctioneer, or in his absence by the Clerk of the Sale, whose decision shall be final and binding.
- VII.—That on failure of complying with the above conditions, the money deposited in part payment becomes forfeited to the vendor, who shall be at liberty to re-sell the lots uncleared by the time stated by public or private sale, without previously tendering any notice; and the deficiency, if any, with all expenses attending the same, shall be recoverable by the seller from the first purchaser, who shall not be entitled to any excess in price on such second sale.
- VIII.—The provisions and powers contained in the above conditions, shall, at the option of the Auctioneer, be taken to apply to all lots purchased throughout the sale by any purchaser, so that in case any re-sale should become necessary, the default may, at the option of the Auctioneer, be held to apply to the whole of such lots, notwithstanding that the purchaser may express his willingness to accept any one or more lots.
- IX.—The Auctioneer has taken every care in the compilation of the catalogue, and to the best of his knowledge and belief all the descriptions given therein are fair and accurate. He, however, wishes it to be thoroughly understood that he gives no guarantee whatever as to the genuineness, authenticity or value of any of the goods sold, and buyers at all his sales are expected to use and rely on their own judgment.

For the convenience of Buyers attending the Sale,  
the Auctioneers beg to give the  
following information.

---

HOTELS AT LLANRWST. (1 Mile.)

Eagles Hotel.                      Victoria Hotel.

HOTELS AT BETTWS-Y-COED. (5 Miles.)

Royal Oak Hotel.                      Waterloo Hotel.                      Gwydyr Hotel.

LLANRWST GARAGE FOR TAXIS. S. R. Roberts.

RAILWAY TIME TABLE.

Arrivals from Chester.		Departures to Chester.	
Chester. dep.	Llanrwst. arr.	Llanrwst. dep.	Chester. arr.
2 36 a.m.	5 30 a.m.	<i>a</i> 7 3 a.m.	9 1 a.m.
5 55 "	8 33 "	<i>b</i> 7 8 "	9 16 "
7 25 "	10 32 "	8 30 "	10 18 "
9 10 "	11 10 "	11 28 "	1 34 p.m.
10 10 "	12 48 p.m.	1 9 p.m.	3 20 "
12 30 p.m.	2 41 "	2 38 "	4 55 "
3 15 "	6 8 "	5 25 "	7 28 "
5 0 "	7 6 "	6 28 "	9 40 "
5 48 "	7 53 "	8 31 "	10 44 "
8 8 "	10 23 "	<i>a</i> Sats. only.	<i>b</i> Sats. excepted.

This train service must be verified from the Company's time tables.

BY ROAD.—The route from the South and the Midlands is by the celebrated London and Holyhead Road, *via* Llangollen and Corwen.

The route from the North is *via* Chester and Denbigh.

The above information is given in good faith, but no liability, in any way, can be accepted by the Auctioneers in regard to the same.

---

THE AUCTIONEERS, THEIR SALE CLERK OR HEAD PORTER will be PLEASED  
TO FAITHFULLY EXECUTE ANY COMMISSIONS for those ladies or  
gentlemen who are unable to attend the Sale personally.

## INTRODUCTORY NOTE.

---

**I**T may safely be said that it is very rarely that Collectors have the offer of so many items, at one time, of such Antiquity and of such undoubted authenticity as those now catalogued. It is an established fact that the majority of the English furniture of Antique interest now offered was made expressly for the Wynn family, for the Castle, at the period of which the several pieces are typical, the majority of the oak work having been made on the estate, and the remainder by craftsmen in the front rank at the several periods.

One of the leading authorities on Antique furniture of these periods, Mr. Percy MacQuoid, has illustrated and referred to some of the items in his works "The Age of Oak" and "The Age of Walnut," and in one case has deemed the item of sufficient interest to devote to it a full-page coloured plate. A note of the items referred to in these works is made when dealing with the particular lot.

Additional interest and value is given to the lots by reason of many of them having important historical associations, and also of the marvellous state of preservation of even the most ancient pieces.

The presence of a few very fine Continental specimens is explained by the fact that the Castle has been used by the owners as a storehouse to accommodate the most interesting object d'arts, which they collected from time to time in their Grand Tours which they made on official and other missions.

Little more need be said, except that no single item has been taken out or added to the sale, the whole being as it has stood for centuries.

In conclusion, it might be stated that about 12 years ago, "Country Life" deemed the property and its contents of sufficient importance to devote an eight-page illustrated article on the history of the Castle with its valuable and interesting contents, and the family who rebuilt and enlarged it in the early years of the XVI Century, and who, through their connections, have remained in unbroken occupation for NEARLY FIVE CENTURIES.

The Auctioneers would state that practically every lot is worthy of an illustration, but to include all would be impracticable.

All the Bulbous-leg Side Tables, which were made on the Estate at the period, are of equal quality and almost identical, only varying in the treatment of the carving.

# GWYDYR CASTLE.

---

## ANTIQUÉ CATALOGUE.

---

### *ADDENDA.*

Lot

- 55 Elizabethan Table, 6 ft. 2 in. long, 3 ft. 5 in. wide, 2 ft. 6 $\frac{3}{4}$  in. high  
71 Day-bed, 9 ft. 9 in. long, 2 ft. 6 in. wide  
78 Wynn Court Cupboard, 4 ft. 9 in. wide, 1 ft. 11 in. deep, 7 ft. 10 in. high  
98 Wynn Justice Chair, 6 ft. 4 in. high, 2 ft. 10 in. wide  
221 Welsh Dower Chest, 3 ft. 9 in. high

---

*Will Buyers kindly insert this information against the respective lots  
for reference?*





*Purchasers will oblige by filling up this Form  
and handing it to the Sale Clerk on making their  
first purchase.*

*Lot purchased No.*.....

*Name* .....

*Address* .....

Purchaser will oblige by filling up this form  
and handing it to the Sale Clerk on making their  
first purchase

Lot purchased No.

Name

Address

# CATALOGUE OF THE FIRST DAY'S SALE,

TUESDAY, 24th MAY, 1921,

At 1 p.m. precisely.

Valuable XVI, XVII, XVIII Century Oak, Walnut and Mahogany Reception Furniture, Important Tapestries, Oak Paneling, Petite Point, Bronzes, Draperies, Oil-paintings and Armoury.

## PORCH.

Lot

- 1 A stone Sphinx on base and Fossil
- 2 A small old Oak Hall Seat
- 3 An interesting old JACOBEOAN OAK HALL PORTER'S CHAIR, with hood and panelled back, ends and front

## CORRIDOR.

- 4 A well carved figure, Robinson Crusoe, on base
- 5 A stuffed Buzzard, in glazed case
- 6 A valuable antique brass mounted Candle Lamp Bracket with bell cover and flame finial, on staircase
- 7 Ditto
- 8 Ditto (loose)
- 9 Ditto (loose)
- 10 Ditto (loose)
- 11 A pair of very valuable EARLY STONE KYLINS at each
- 12 Ditto at each
- 13 A pair of rare and interesting carved GOTHIC CRUSADER FIGURES on bracket bases, at each
- 14 Ditto Ditto at each
- 15 One ditto Ditto
- 16 A very valuable and beautifully executed pair of JACOBEOAN CARVED DOE'S AND DEER'S HEADS, with real antlers, on finely carved shield shaped brackets, surmounted by Amorini and flowers in gilt with mask on lower point, at each
- 17 An antique 3 ft. 10 in. by 2 ft. Oak Hall Table with parquetted top on square legs with understretchers

Lot

- 18 A piece of antique CHAIN ARMOUR, bronze Javelin, Adje Head, and seven Arrows
- 19 Very interesting EARLY ENGLISH SWORD in original scabbard
- 20 Another very fine EARLY ENGLISH SWORD with engraved blade
- 21 Ditto ditto
- 22 A set of THREE very valuable EARLY XVIII CENTURY MAHOGANY DINING CHAIRS, having splat backs and loose seats, supported on ball and claw feet and fine cabriole legs, with very finely carved knees, in leaf design, at per chair. *Vide illustration on page 33*
- 23 A unique and extremely valuable set of EIGHT EARLY XVIII CENTURY MAHOGANY DINING CHAIRS, having fine splat backs and loose seats, in OLD NEEDLEWORK of fine design (two in odd covers), and supported on bold cabriole legs and claw and ball feet with well carved knees in Cabochon and ribbon design, at per chair. *Vide illustration on page 33*

## OAK ANTE ROOM

(commonly known as The CHAPLAIN'S ROOM.)

- 24 An interesting Oak Writing Table with carved edge, supported on pillar with carved lion mask knees and four claw feet
- 25 A Walnut Horse-shoe Crop Rack, Inkwell, and Slate Catherine Wheel
- 26 A box of Fossils and Minerals
- 27 A RARE JACOBAN WALNUT DAY-BED with original caned back in turned side rails, the whole supported on eight very finely shaped and carved legs on scroll feet, with dome shaped stretchers between, and hair stuffed cushion. *Vide illustration on page 36*
- 28 An interesting Oil-painting in old gilt frame, "Drummond Castle," 1854, by J. Thompson
- 29 A valuable 4 ft. 6 in. ANTIQUE OAK WELSH COURT CUPBOARD with bevelled panelled front and sides, turned supports, carved brackets in mask design, and with carved panel in centre rail
- 30 A pair of RARE 16 in. JACOBAN BRASS FIRE DOGS with bosses, the lower member being decorated in crowned female bust, finished in a flame terminal. *Vide illustration on page 36*
- 31 A valuable set of FOUR FINE STUART WALNUT CHAIRS with seat and back upholstered in ORIGINAL LEATHER with Wynn Crest embossed in gold, on turned legs and understretcher, and with finely carved front rail, in scroll design. For illustration *vide page 7*
- 32 A very quaint and unique pair of XVI CENTURY LEATHER FIGURES (4 ft. high) representing Queen Elizabeth and Sir Walter Raleigh, the corsage and ruffle of the former being finely perforated. *Vide illustration on page 51.* At per figure

## OAK HALL.

- 33 A pair of early XVI CENTURY CARVED GROTESQUE FIGURES of the period, 2 ft. 3 in. and 1 ft. 9 in. high respectively, at per figure
- 34 A very valuable 5 ft. by 3 ft. EARLY XVI CENTURY OAK REFECTORY with chequer inlaid frieze, and below a carved string in nulling design, with carved acanthus decoration at corners. The whole being supported on square legs and stretchers, with parqueted top, in remarkably fine condition. This table is the same width and of similar design as Lot 73, in the Dining Room and was used as an extension as occasion warranted. *Vide illustration on page 15*



Lot 31  
One of a Set of 4 Chairs.



Lot 57  
One of a Set of 12 Chairs.



Lot 69  
One of a Set of 12 Chairs.



Lot 106  
One of a Set of 5 Chairs.



Lot 42



Lot 43



Lot 44



Lot 113

Lot

- 35 An interesting and valuable ANTIQUE BRASS LANTERN BRACKET CLOCK, with engraved brass dial and decorated in dolphins and flowers in open work design, with two silver cherubs, on four brass feet, by Jeremie Gregory, Londini
- 36 An interesting EARLY ENGLISH STEEL CUIRASS in fine preservation
- 37 A valuable PAIR OF CHARLES I SINGLE OAK CHAIRS with bobbin rail supports and splats, surmounted by a carved top-rail with Crown decoration and on bobbin turned legs and front rail with diagonal side supports, at \_\_\_\_\_ per chair.  
*Vide* illustration on page 35
- 38 A rare and very valuable CHARLES II WALNUT CHAIR with carved splats in rose and scroll design surmounted by a finely carved top-rail with Crown and Amorini as supporters, carried by fine twisted and carved rails, the legs and understretchers being in the same design, the front rail being well carved in scroll design with Crown centre. *Vide* illustration on page 35
- 39 A very interesting and extremely well executed PANEL OF BURGUNDIAN CARVING in high relief in triptych form depicting the LEGEND OF ST. HUBERT. The work, which measures 9 ft. 9 in. by 4 ft. 2 in., is attributed to one of John Wynn's sons who, in those days, was a monk in St. Hubert's Monastery. This lot is illustrated on page 42, and is very suitable for use over a chimney-piece or similar purpose. Special reference is made to this piece and is illustrated in *Country Life*, 27th June, 1908
- 40 An exceptionally WELL CARVED DEER ON BASE, measuring 4 ft. 9 in. long, which was probably carved at the same time as the foregoing lot, and used as a surmounting ornament
- 41 A very valuable pair of rare JACOBEOAN BRASS FIRE DOGS (20 in. high) with bosses and a crowned female bust on lower member which is also decorated in rose and acanthus design, in exceptionally fine condition. *Vide* illustration on page 41
- 42 An extremely valuable CHARLES II OAK ARMCHAIR of exceptionally fine colour. The back is arranged in three panels with a marqueterie inlaid top-rail. The former are well carved, the top ones bearing the inscription, R.M. 1664, and the lower being in a geometrical Rose design. The arms, which are carved, are carried on turned supports and legs, with understretchers and the whole being in fine condition. This chair belonged to Richard Middleton, of Chirk Castle. *Vide* illustration on page 8
- 43 Another very valuable CHARLES II OAK ARMCHAIR with finely carved panelled back in arabesque design, the upper rail being similarly treated. The arms are carried on square shaped supports with square understretchers, the seat rail being carved in triple stringing. *Vide* illustration on page 8
- 44 An exceptionally fine CHARLES II. ARMCHAIR with four panelled back with carved inscription in each depicting M.W. 1666. The side rails and the centre of the top rail having fleur-de-lys terminals, the arms and the seat rail being treated in carved stringing, and the whole being carried on bobbin supports and stretchers. This chair was made for Mary Wynne, who became the Duchess of Ancaster, *vide Country Life*, June 27th, 1908. For illustration see page 8
- 45 An interesting valuable EARLY ENGLISH LONGSPEAR with chased ormolu mounted spear and chased ormolu and steel base
- 46 An extremely valuable and fine example of an EARLY XVI CENTURY OAK SIDE TABLE with godroon border and drawer fitted in frieze, which is carried on a facade design carved in rose decoration, the whole being supported on fine bulbous legs which are carved in acanthus and godroon design on boss shaped feet with understretchers
- 47 A very valuable and well executed PETITE POINT PANEL, in fine condition, fitted in a carved walnut frame on carved stand
- 48 A carved Oak Three-tier Easel Newspaper Rack Stand
- 49 An old wood block Map of Caernarvon, 1610, by John Speed in Hogarth frame
- 50 A finely carved Oak Shield with armorial bearings, in quarters



## OAK PARLOUR.

Lot

- 51 Comfortable Post Boy Mahogany-framed Armchair, with shaped circular ears, in light tapestry, on claw and ball feet, and cabriole legs with carved knees
- 52 A similar Chair, but of a slightly different shape
- 53 An interesting and very EARLY BRASS DIAL HANGING CLOCK, in Repoussé brass work frame
- 54 A very valuable EARLY ENGLISH MAHOGANY STOOL, 1 ft. 11 in. by 1 ft. 4 in., on cabriole legs and pad feet, in cardinal velvet

---

55 A MAGNIFICENT AND RARE ELIZABETHAN OAK CENTRE TABLE, with finely carved frieze in nulling and scroll design, the corners being well carved in acanthus design, and the whole supported upon four massive turned legs with square bulbous centre, which are tooled and upon which is boldly carved on each face the crests of the Wynn family, the square base being shaped and magnificently carved in acanthus design, and the whole being in perfect preservation. *Vide* illustration on opposite page

---

56 A unique and finely carved SMALL JACOBEOAN WALNUT TRINKET OR TREASURE BOX, 11 in. by 8 in., the sloped top being finely carved in eagle and cherub design, and fitted with an old secret brass dial lock

57 AN EXTREMELY VALUABLE AND UNIQUE SET OF TWELVE WILLIAM AND MARY HOOP BACK CHAIRS, with finely shaped splat, the centre of which is pierced and carved in rose and leaf design, the frame and shaped under-rails being profusely carved in the same design, and the seat, which has a shaped droop front, is covered in old crimson Utrecht velvet, the whole being supported on break scroll legs with finely carved knees and pad feet. The chairs are in a marvellous state of preservation. *Vide* illustration on page 7

58 A magnificent and very valuable WILLIAM AND MARY WALNUT FIRE SCREEN STAND, the pediment being very finely carved in cornucopia shell and scroll design, the under-rail being well carved in scroll and rose design and supported on two pairs of splay feet with carved knees. This Screen is fitted with an exceptionally FINE AND VALUABLE PETITE POINT PANEL, the centre depicting the JUDGMENT OF SOLOMON, and which is surrounded by a floral design on darker ground. *Vide* illustration on page 34

59 A valuable 4 ft. 7½ in. ANTIQUE OAK WELSH TRIDARN, the lower portion being enclosed by panelled doors, the sides being also panelled, the centre portion having carved panel doors on either side of a centre panel carved with inscription 1687, H.P.A., in smaller panel, with a dual arch canopy, and above the whole of which is a carved frieze, the canopy being supported on turned pillars with pendant bosses and splat ends. For illustration see page 51

60 A unique and rare pair of WILLIAM AND MARY PIERCED STEEL AND ENGRAVED PYRAMID-SHAPED FIRE DOGS, finished in urn-shaped terminal. For illustration see page 36

61 A valuable XVIII CENTURY HARPISCHORD, in very fine inlaid mahogany case on original stand. Total length 6 ft. 3 in. *Vide* illustration on page 23

62 A pair of rare XVII CENTURY CARVED WALNUT BELLOWS, carved in Tudor rose and leaf design with mask decoration

63 An antique CROMWELLIAN OAK OVAL GATE LEG TABLE, 4 ft. by 3 ft. 2 in., on turned legs with arched spandril, and drawer

64 A handsome amber ground Corridor Rug, 13 ft. by 4 ft. 3 in., with pink, green, and white design



Lot 55



Lot 65

Lot

65 THE REMARKABLY FINE TUDOR LINEN-FOLD OAK PANELLING TO THIS ROOM, which measures 19 ft. 6 in. by 19 ft. 9 in., with bay 8 ft. 6 in. by 2 ft. 6 in. in addition, the average height of the same being about 6 ft., complete with door en suite with original quaint fastener, and with which is included the finely hand-wrought and moulded principal Oak beams and supports with the same mouldings running through each, in Gothic design, and also is included the cross beams and the centre panels which are well carved and decorated with the Wynn crests and Tudor rose

THE ELIZABETHAN OAK MANTEL, with carved frieze in vine and grape design with dragon in centre, the whole supported upon two pairs of finely carved pillars, the capitals being carved in masks and scroll design, and above a very finely carved and perforated cornice in the Tudor rose design, and between these a magnificent overmantel, the centre panel bearing the date 1597, and having the raised Coat of Arms of the Wynns, treated heraldically with motto, and at each side, acting as supporters, are two figures of "Julius" and "Augustus."

THE RARE AND HANDSOME ANTIQUE SPANISH LEATHER FRIEZE 3 ft. deep, which is decorated in multi-coloured flowers and birds on gold ground

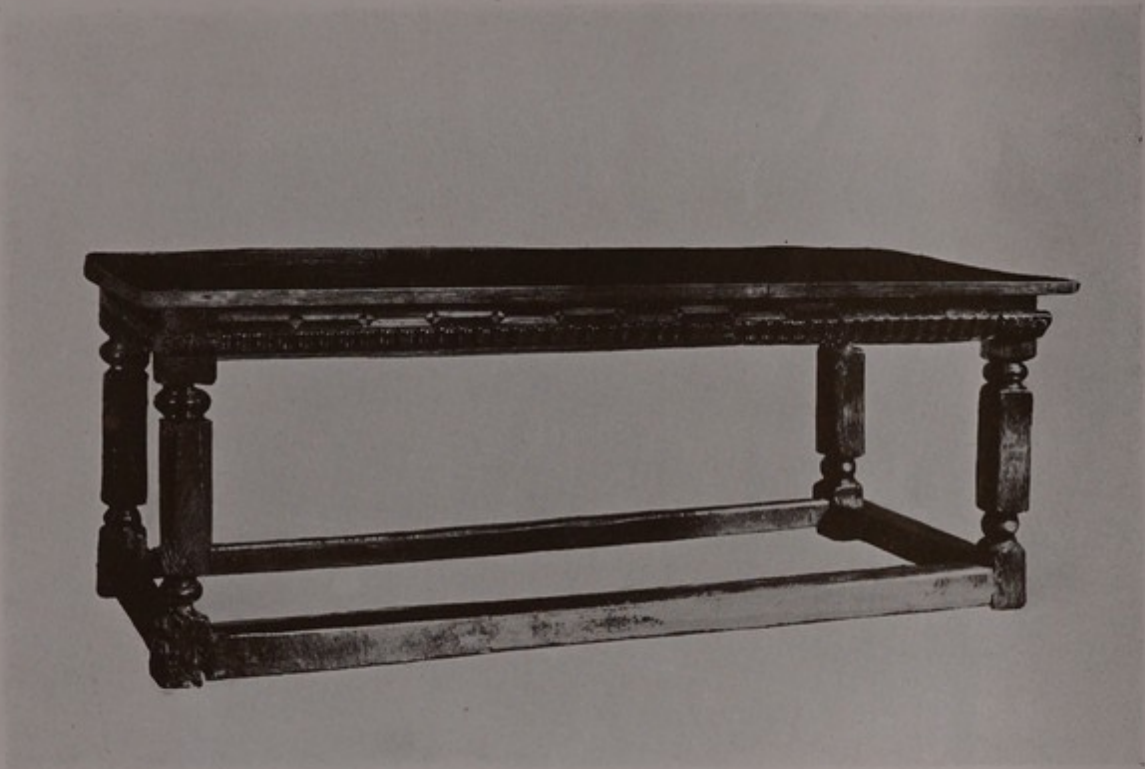
This lot may be withdrawn if sold with the Castle as it stands, or if the Estate is not sold. A telegram of advice will be sent, on request, on day prior to sale

This Room is particularly mentioned in the article on Gwydyr in "Country Life," 27th June, 1908. *Vide* illustration on opposite page

Lot  
66  
67

## OAK DINING ROOM.

- 68 Two very EARLY 16 in. BRASS ALMS DISHES, with panel depicting "The Return of the Spies from Canaan," at per dish
- 69 A VERY RARE SET OF TWELVE WILLIAM AND MARY WALNUT HIGH BACK CHAIRS, having exquisitely carved and perforated panel in leaf garland, Prince of Wales feathers, and Cabochon design, on the latter of which is carved an olive sprig, the complete panel showing the particularly fine treatment of the C. and S. scrolls, the whole being in a finely moulded frame, the seats being covered in valuable EARLY ENGLISH NEEDLEWORK in remarkably fine condition, and the whole supported on finely shaped scroll legs with shaped cross under-stretcher and turned tie in centre. For illustration see page 7
- 70 A valuable and interesting old carved Oak Two-fold Screen, with finely carved panels and top frieze panel
- 71 A remarkably FINE AND RARE EARLY WILLIAM AND MARY WALNUT DAY-BED, with adjustable head rest fitted with oval cane panel in beautifully carved frame, carried by finely carved and turned supports in Acanthus and Rose design. The bed is cane-seated in a richly carved frame, which is supported upon 6 finely shaped and carved scroll legs, with carved Acanthus knees and beautifully shaped stretchers, with milled carving, and also again decorated in Acanthus. *Vide* illustration on page 34
- 72 A Very valuable and finely executed EARLY ENGLISH NEEDLEWORK PANEL in finely carved Walnut frame on stand, with four splay legs terminating on scroll feet
- 73 A very valuable EARLY XVI CENTURY OAK REFRECTORY TABLE, 7 ft. 2 in. by 3 ft., with parquettèd Walnut top, over a chequer inlaid frieze with a carved string below in nulling design and carved Acanthus corners, the whole being supported by four square and turned legs with stretchers. This lot is in very fine condition, and is the same width and of similar design as Lot 34 in the Oak Hall, and, it is believed, was used as an extension to the same as occasion required. *Vide* illustration on opposite page
- 74 A pair of handsome Ormolu 3-branch Sconces, the scroll brackets terminating in a mask decoration.
- 75 Ditto
- 
- 76 A REMARKABLE AND EXTREMELY VALUABLE PAIR OF 4 ft. 6 in. XVI CENTURY OAK OBLONG SIDE-TABLES, with parquettèd tops, over a magnificently carved frieze in scroll and mask design, supported on four massive bulbous legs carved in godroon and acanthus design, the top terminals being carved in lions rampant, and having pierced brackets and under-stretchers, the top surface of the latter being finely carved in Guilloche design
- Note.*—These Tables are typical of all others in the Castle, which were made by the Estate Workmen for the Castle at the period, but of course these are more remarkable as being a pair, which are of great rarity. These tables will be sold at per table, the buyer having the option to take both at the price. See illustration on opposite page
- 
- 77 An interesting pair of XVII CENTURY ENGLISH WALNUT BELLOWS, carved horse effrayé centre with serpent border, and iron nozzle



Lot 73  
Lot 34 is also similar.



Lot 76  
One of a Pair.



Lot

78 THE RENOWNED JOHN WYNN'S COURT CUPBOARD, carried out in fine proportions in Gothic design and surmounted by a canopy dais, having been made in 1535 for the one whose name it bears, and who enlarged the Castle. The lower portion opens in three cupboards and two drawers decorated with armorial bearings and emblems of the Wynn family. The upper right panel bears the Arms of John Wynn, a chevron between three fleur-de-lys in the first and fourth, and on the second and third three eaglets displayed in fesse, at the side of which is the leek flower and initials I.W. The centre panel bears the two royal lions of England crowned passant above the York and Lancaster rose (the family being connected by marriage with the Royal House of Tudor). The other panel bears a helm with an eagle rising as crest, and the leek flower and initial appear again. The right hand drawer of the middle compartment bears the royal red dragon of Cadwalar and head in profile. Two heads are upon the other drawer, these emblems being an allusion to the story of Vychan defeating the English Army who invaded Wales, and having killed three of the principal English officers, was in consequence directed to bear the Arms—three Englishmen's heads. The centre bottom panel bears a repetition of the Wynn Arms. On the other panels appear the Arms of Gorweth (Father of Llewellyn) and his brother Roderic, ancestors of the Wynn family. The sides are finely carved in linen-fold, as also the back and the under portion of the canopy. The frieze under the cornice being in two panels, carved again in the Royal Dragon above referred to.

This lot has received considerable notice in Mr. Percy MacQuoid's work "Age of Oak," and is one of the very few pieces which is deemed worthy of a full page coloured plate. *Vide* illustration on opposite page



Lot

- 79 A VERY FINE AND RARE PAIR OF JACOBEAN BRASS FIRE DOGS, 1 ft. 10 in. high, of boss design, with crowned female bust decoration on lower member. *Vide* illustration on page 41
- 80 A remarkably FINE XVI CENTURY OBLONG OAK SIDE TABLE with finely carved godroon edge, above an exquisitely carved frieze in inverted dual facade design, with Guilloche string above, the whole being supported upon four handsome bulbous legs treated in godroon and Acanthus carving, with very finely carved period heads on the top terminals of same, and possessing fine pierced brackets and understretchers. *Vide* illustration on page 42
- 81 A VERY IMPORTANT PAIR OF EARLY DUTCH OIL-PAINTINGS, "Flower and Still Life" subjects in fine old gilt carved wood frames. *Vide* illustration on opposite page. At per picture
- 82 AN INTERESTING OLD OIL-PAINTING ON PANEL, in old gilt frame, "Prince Rupert"
- 83 A WELL EXECUTED OIL-PAINTING, in fine gilt frame surmounted by the Royal Crown on Cushion, "H.M. Queen Victoria taking the Sacrament"
- 84 A speculative old Oil-painting in fine old carved wood frame, "Interior"
- 85 AN EXTREMELY VALUABLE OLD WELSH OAK TRIDARN, the lower tier being fitted with two doors having two vertical and top horizontal panels with carved lozenge pattern centre, the frieze above being carved in dual inverted facade design; the centre tier being similarly treated in panels as the lower ones, the frieze above this being carved in Guilloche design; the canopy being carried on turned supports with turned boss pendants, and the cornice frieze being carved in indent design; the sides to the lower portion being panelled, with the top tier open
- 86 A VERY FINE XVII CENTURY OIL PAINTING in carved and gilt wood frame, size of canvas, 31 in. by 29 in., "Charles I in Armour on Charger with semi curtained back-ground"
- 87 A pair of interesting 3 ft. 3 in. Early Steel Fire Implements
- 88 THE REMARKABLY FINE XVII CENTURY PANELLING TO THE ROOM, also  
THE FINELY DECORATED EARLY ENGLISH FRIEZE, and  
THE MAGNIFICENTLY CARVED DOORWAY AND CHIMNEY PIECE, which work is attributed to Inigo Jones. *Vide* pages 20, 21, and 22 for full description and illustrations.



Lot 81



Lot 81



W. & A. K. Co. N.Y.

Lot 88

Lot

88 THE REMARKABLY FINE XVII CENTURY PANELLING TO THIS ROOM, which measures 27 ft. by 18 ft. 9 in. by an average height of 8 ft. 6 in., which is constructed in finely proportioned panels, the lower panels being double the width of the upper panels, in which is arranged a shaped Jacobean moulded inner panel

Above this is a FRIEZE about 3 ft. 6 in. deep in FINE EARLY ENGLISH LEATHER, decorated in coloured geometrical design, on a gold ground.

THE CHIMNEY PIECE is an exceptionally fine example of the carving of the period. The architrave around the marble is boldly moulded and carved in Acanthus. The shelf above is supported by pierced brackets. The overmantel is finely carved in 3 panels, the centre panel being carved with the Wynn armorial bearings. The side panels are of arch shape and profusely carved in a rich arabesque design with twin mask centres; the styles between the panels being also richly carved and surmounted by a mask. The whole is surmounted by a magnificently carved cornice in broken panels, carved in cherubs and allegorical design, the dividing brackets being also carved in cherubs, the whole being supported on two massive twisted pillars beautifully and delicately carved in entwining vine design, which rest on elaborately carved square bases, the facets of which bear profiles in period design; the top member of the plinth being richly carved in Acanthus design.

THE DOOR, which is set in a boldly carved architrave, is arranged in 4 panels, the top one being of dome shaped design decorated with a finely carved griffin, the centre large panel being heavily carved in geometrical design and the lower panels bearing carved dolphins. The richly carved dome-shaped pediment is carried on a beautifully carved frieze, in a similar design to that of the overmantel, upon which are two finely carved Amorini, with arms out-stretched behind 2 pierced Jacobean pediments, the whole being supported on 2 pairs of massive twisted columns, finely and delicately carved in entwining vine design, surmounted by very finely carved capitals in Corinthian design.

The design of these pieces is generally regarded as the work of Inigo Jones, who was undoubtedly connected with the district and also with the family, who held Court office when Inigo Jones held the office of Architect to the Court during the period when the work was carried out, in 1640. For illustration see opposite and following page.

This Panelling and enrichments were specially referred to in the article on Gwydyr in "Country Life," on 27th June, 1908.

*Note.*—This lot may be withdrawn if sold with the property as it stands, or if the property is unsold. On request, an advice by telegram will be despatched on day prior to sale





Lot 93  
One of a Set of 6 Chairs.



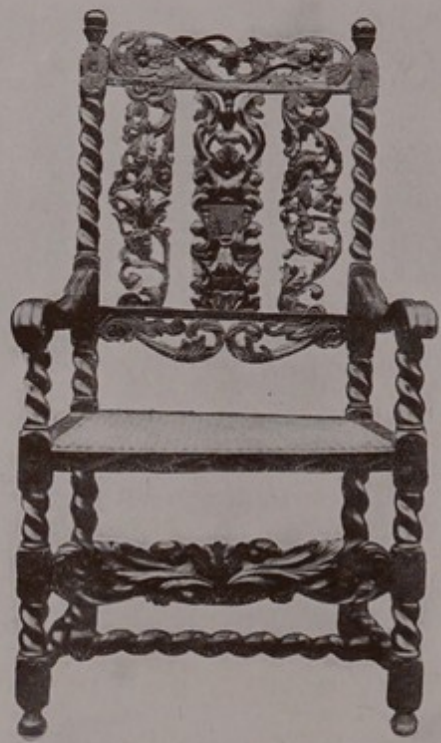
Lot 128  
One of a Set of 4 Chairs.



Lot 61



Lot 95



Lot 96



Lot 102

## THE STATE DRAWING ROOM.

Lot

- 89 A VERY RARE AND MAGNIFICENT PAIR OF JAMES I BRASS FIRE DOGS, 3 ft. 9 in. high, on tripod with cherub head decoration, the upper portion being beautifully turned in extremely well proportioned bosses. *Vide* illustration on page 36
- 90 A pair of interesting Early English Steel Fire Implements, 4 ft. 6 in. high with unusual terminals.
- 91 A MAGNIFICENT 5 ft. 6 in. OAK OCTAGONAL LIBRARY TABLE, the base of the under-carriage being exquisitely carved and the pillar being also heavily carved in spiral supports, which is AN EXCEPTIONALLY FINE EXAMPLE OF A JACOBEOAN FONT, and was probably removed from Gwydyr Private Chapel. The top is of later date, the frieze of which is carved in scroll design with also a carved centre
- 92 A VERY FINE STUART SILK-WORKED PICTURE, mounted in an early carved gilt frame, on a banner screen stand. This picture, according to tradition, is said to have been worked by Mary, Queen of Scots.
- 93 A VALUABLE SET OF SIX GOTHIC CHIPPENDALE DINING CHAIRS, with very fine ecclesiastical window design backs, with cluster column side supports and on four cluster column legs, and covered in fine old yellow ground Genoese velvet in red and blue design, at per chair. *Vide* illustration on page 23
- 94 A very interesting EARLY XVII CENTURY PAIR OF WALNUT BELLOWS which are exceptionally well carved in dolphin and shell design, with steel nozzle
- 95 A VERY RARE EXAMPLE OF A BEAUTIFULLY CARVED WALNUT CHARLES II CANE-SEATED ARM-CHAIR, with three very finely carved perforated splats, in Acanthus and rose design, supporting a finely carved top rail in a similar design with an eagle displayed, and Amorini as supporters, the front lower rail being treated similarly. The arms and seat rails also profusely carved in the predominating design both on the upper and side facets. The supports, legs and under-stretchers being of fine twisted design. This chair is illustrated and particularly referred to in Mr. Percy MacQuoid's work on page 12, "Age of Walnut." *Vide* illustration on opposite page
- 96 ANOTHER RARE EXAMPLE OF A VERY SIMILAR CHAIR OF THE SAME PERIOD and PRACTICALLY IDENTICAL with the foregoing lot, except for the slight variation in the treatment of the carving. *Vide* illustration on opposite page
- 97 A valuable Early English Gilt Fire Screen, on two pairs of shaped feet, with an exceptionally fine example of an EARLY ENGLISH NEEDLEWORK PANEL
- 98 THE WIDELY RENOWNED WYNN JUSTICE CHAIR, being a MAGNIFICENT SPECIMEN OF EARLY ELIZABETHAN FURNITURE. *Vide* pages 26 and 27 for detailed description and illustration.





Lot 98

Lot

98 THE WIDELY RENOWNED WYNN JUSTICE CHAIR. A MAGNIFICENT SPECIMEN of EARLY ELIZABETHAN FURNITURE, and perhaps one of the most remarkable examples in existence, to which is added considerable historical associations, in so far as it was used in the XVI Century in the dispensation of justice for the district, by the Wynn forbears. The back is arranged in an arch-shaped panel, finely enriched in carving with the Wynn arms inset in four quarters, the first and fourth bearing three lions passant, and the second and third three eaglets in fesse, the finely carved canopy being supported on exquisitely carved and delicately shaped bulbous supports, in Acanthus decoration. The arms are finished in eagle head terminals, which are carried on supports beautifully carved in scroll design with eaglets in fesse, and these are finished on fine carved claw and ball feet. The seat rail is also finely carved in scroll and eagle head design, the same being supported by a finely carved and pierced deep arched bracket in Gothic design on three sides. This piece is in remarkably fine preservation and is unique in the best sense of the word, it being worthy of a place of honour in a national museum. *Vide* illustration on opposite page.

Lot

- 99 An interesting EARLY ENGLISH MAHOGANY FOOT-STOOL, on claw and ball feet, and covered in Early English needlework. This Foot-stool was used by Queen Caroline during her State Trial in the House of Lords.
- 100 A valuable EARLY ENGLISH MAHOGANY STOOL on cabriole legs and pad feet, with loose seat covered in crimson velvet
- 101 A VERY HANDSOME AND WELL CARVED OAK PEDESTAL BUFFET OR LIBRARY TABLE, 9 ft. by 3 ft. 6 in., with parquetted top. The pedestals are enclosed by finely carved dual panel doors, on each side of which is a finely reeded column finished in capitals, the bases being profusely carved and carried on plinth with squatting lion mask; the frieze and centre drawer being well carved. This piece is unusual as it is also carved at the back, making it suitable for use as a centrepiece.
- 102 A VERY RARE AND EXTREMELY VALUABLE SET OF THREE BOTTLE GREEN BOHEMIAN GLASS PIECES, being profusely decorated in enamel, and presented to the Wynn family by the Elector of Bohemia in 1667, which date appears on the pieces. The set comprises a fine 17 in. Bocal decorated in portrait equestrian figures of the German Emperors and inscription with a cover finely decorated in floral design and finished in high circular bossed terminal. Also two Goblets, 7 $\frac{3}{4}$  in. high, decorated with armorial crest surmounted by date, on massive and studded bases. For illustration see page 24
- 103 AN INTERESTING LOUIS XVI ORMOLU MOUNTED BUHL BRACKET CLOCK, with enamel and gilt dial, presented by H.R.H. the Duke of Albany.
- 104 A VERY FINE EXAMPLE OF AN OAK JACOBEOAN CRADLE, finely inlaid with the sprays of tulips in two coloured woods, the uprights and rails being inlaid in chequer pattern, the hood bearing a carved shield with the inscription R.W. 1634. This Cradle was made for Sir Richard Wynn, and is the only specimen of an inlaid oak cradle illustrated and referred to in Mr. Percy MacQuoid's work "The Age of Oak." For illustration see page 35
- 105 A RARE AND EXTREMELY INTERESTING ANTIQUE IRON TANKARD, with silver-mounted rim engraved "Fear God, Honour Ye King," I.R., and Crown, and on the front a large silver Portrait Medallion of James II, with inscription
- 106 AN EXTREMELY RARE AND VALUABLE SET OF FIVE WILLIAM AND MARY WALNUT HIGH-BACK CHAIRS, the same having a cane back with a most elaborately carved frame, the cresting of which is of very fine conception in perforated lattice and rose design, which is surmounted in the centre with a magnificently carved basket of fruit. The seat is in old green Utrecht velvet, the front drooping rail carved in rose and leaf design. The whole supported on scroll legs with finely carved knees and scroll feet, and carved and shaped under-stretchers. These Chairs are particularly referred to in Mr. Percy MacQuoid's work "The Age of Walnut," with illustration. For illustration see page 7
- 107 AN INTERESTING XVII CENTURY BRASS HANGING CLOCK, in gilt chased frame with brass dial
- 108 VERY FINE OCTAGONAL WILLIAM AND MARY WALNUT SNAP-TOP TABLE, on fine pillar and tripod, with well carved knees on hoof feet, the same being COVERED IN VERY FINE EARLY ENGLISH PETITE POINT, the centre figure panel being surrounded by a design border. In exceptionally good preservation. For illustration see page 34
- 
- 109 A HIGHLY IMPORTANT PANEL OF GOBELINS TAPESTRY, about 19 ft. by 10 ft. 4 in. Subject, "Apotheosis of Bacchus," with Latin inscription "Pro Vite et Vino Bacch. Gens Omnis Adoratum." In remarkably fine preservation. *Vide* illustration on opposite page



Lot 109



Lot 110

Lot

- 110 ANOTHER EXTREMELY IMPORTANT PANEL OF BRUSSELS TAPESTRY, about 19 ft. by 11 ft. 3 in. Subject, "Alexander the Great," and Battle Screen. This also is in a fine state of preservation, and is a fine example of the period. *Vide* illustration on opposite page
- 
- 111 AN EXCEPTIONALLY FINE MAHOGANY CHIPPENDALE CORONATION CHAIR with fully upholstered back and arms in the original crimson velvet, the whole being supported on cabriole legs with finely carved knees and carved scroll feet. This was used as a Peer's Seat at the coronation of George III. *Vide* illustration on page 33
- 112 A VERY FINE STOOL IN SIMILAR DESIGN in original covering en suite, and was used as a Peeress' Stool at the same function. *Vide* illustration on page 33
- 113 AN EXTREMELY INTERESTING AND FINE SPECIMEN OF A XVII CENTURY WALNUT ARMCHAIR IN BOLD RUSSIAN DESIGN, which is covered in the original finely embossed Leather, the same being in a remarkable state of condition and having the Russian Royal Coat of Arms at the rear of the back. The back support rails are finished in finely carved terminals and the whole rests on 4 very boldly carved claw and ball feet with 4 magnificently carved stretchers, rails in period design. This chair is believed to have been made by Peter the Great when in England and presented to the Wynn Family. For illustration *vide* page 8
- 114 One pair of fine embossed Brass Sconces
- 115 Ditto
- 116 Ditto
- 117 A VERY VALUABLE AND TYPICAL XVI CENTURY OAK SIDE TABLE, 3 ft. 11 in. by 2 ft. 5 in. with carved edge in Guilloche design with frieze, carved in dual inverted facade design on finely proportioned bulbous legs decorated in godroon and Acanthus design with stretcher rails carved in successive lozenge design
- 118 VERY RARE XV CENTURY BRONZE INCENSE BURNER supported on three winged Griffins, the cover being surmounted by a tall classical figure. A loose inkwell of later date has been fitted, but does not in any way detract from its value or interest
- 119 A VERY INTERESTING XVI CENTURY ENGLISH BRONZE BELL with inscription around base "Scte Michael Archagle, Ora Pro Nobis, 1599." The upper inscription being "Johannes Weinens me fecit, 1599"
- 120 VERY FINELY CARVED OAK CHEST WHICH IS EN SUITE WITH LOT 101. This possesses a very finely carved frieze and plinth in scroll design, the front having similar carved panels as the companion piece with nail head centres, on each side of which are flat reeded columns with capitals, the sides being panelled
- 121 AN EXTREMELY RARE XI CENTURY BRONZE BELL which originally came from Dolwyddelen
- 122 A VERY INTERESTING XVI CENTURY BRONZE MATINS BELL chased with the twelve Apostles, and surmounted by a quaint handle, supported by cherubs
- 123 ANOTHER SIMILAR BELL, with ecclesiastical figure decoration
- 124 Very fine pair of ENGLISH BRONZE LIONS on finely shaped ormolu scroll bases
- 125 AN EXTREMELY HANDSOME AND VALUABLE SIX FOLD SCREEN, 6 ft. 8 in. high, covered in very FINE OLD SPANISH LEATHER, highly decorated in multi coloured floral design on gold ground
- 126 A pair of finely designed ORMOLU SIX LIGHT CANDELABRA (27 in. high), with woman and child supports on shaped bases
- 127 A pair of valuable and well proportioned ITALIAN ALABASTER URN-SHAPED VASES AND COVERS, 2 ft. 4 in. high, decorated in relief in classical design

Lot

- 128 An extremely valuable set of FOUR EARLY ENGLISH MAHOGANY SHAPED FRONTED ARMCHAIRS, with finely shaped backs and arms, on scroll legs with finely carved knees, the front rail being carved in the York and Lancaster rose. The back panel, seat and arm rests being covered in FINE OLD ENGLISH NEEDLEWORK in remarkable preservation. For illustration, see page 23
- 129 An interesting Early English Gilt and Oak-frame Chair of similar design but slightly larger and upholstered in old green velvet
- 130 A VERY VALUABLE OIL PAINTING, "PORTRAIT OF DEER KEEPER," with motto:—  
Size of canvas, 32 in. by 29 in.  
" At Gwydyr Park, I kept the Deer.  
Now here I stand to guard ye Beer.  
So Bacchus did his Crook resign,  
To be the Immortal God of Wine."
- 131 A VERY IMPORTANT AND VALUABLE XVI CENTURY ITALIAN OIL-PAINTING, on panel, with an indistinct inscription on frame, "Youth of the Period"
- 132 A VALUABLE EARLY ENGLISH OIL-PAINTING, Portrait of Sir John Wynn, by Sir Godfrey Kneller, in fine gilt swept frame. Size of canvas 28 in. by 24 in.
- 133 A VERY HANDSOME PAIR OF XVII CENTURY ITALIAN WALNUT HIGH BACK ARMCHAIRS, with veneer inlaid panel set in carved splat, also similar top rail and front under rail. The back supports are finished in carved terminals, the arms being treated in the same design; carved under-stretchers and seat rail; at per chair. *Vide* illustration on page 52
- 134 Ditto, at per chair
- 135 Another pair of exactly similar but smaller Armchairs en suite, at per chair  
*Note.*—The purchaser of lot 133 will have the option of lots 134 and 135 at the same price, by declaring his intention at the time of sale of the first lot
- 136 AN EXTREMELY INTERESTING EARLY ENGLISH OIL-PAINTING, Portrait of Sir John Wynn, Baronet of Gwydyr. Artist unknown. Size of canvas 45 in. by 35 in.
- 137 A VERY WELL EXECUTED OIL PAINTING, "Portrait of Peer in Armour, in Robes and Coronet, with Seascape and old Man of War in distance." Size of canvas 34 in. by 27 in.
- 138 A SMALL AND VALUABLE OIL-PAINTING PORTRAIT of H.M. King George II, in Crimson Robes with Order of the Garter, in fine carved wood frame. Size of canvas 17 in. by 14 in.
- 139 AN IMPORTANT EARLY ENGLISH OIL-PAINTING PORTRAIT of Mary, wife of the Duke of Ancaster, by Sir Peter Lely, in old ebonized and gilt frame. Size of canvas 48 in. by 27 in.
- 140 AN EXTREMELY VALUABLE OIL-PAINTING, Portrait of Gilbert, First Duke of Ancaster, 21st Lord Willoughby of De Eresby, artist unknown, in similar frame. Size of canvas 36 in. by 28 in.
- 141 A VERY IMPORTANT AND MAGNIFICENTLY CARVED JACOBEAN PANEL, being elaborately carved with the bust of Alexander, in Roman costume with laurels in centre, and surrounded by a magnificent scroll and branch design, and the whole enclosed in a finely carved egg and tongue design frame. This work is believed to be the work of Inigo Jones, who was connected with the family through Court Appointments held by himself and the Wynn family, and he was also associated with the district. Size 9 ft. 6 in. by 5 ft. 2 in.
- 142 A FINE EARLY ENGLISH WALNUT CARVING, "A Wolf," 1 ft. 7½ in. high
- 143 A companion carving of the same subject in a different position, 1 ft. 2 in. high



Lot 22



Lot 23



Lot 111



Lot 112

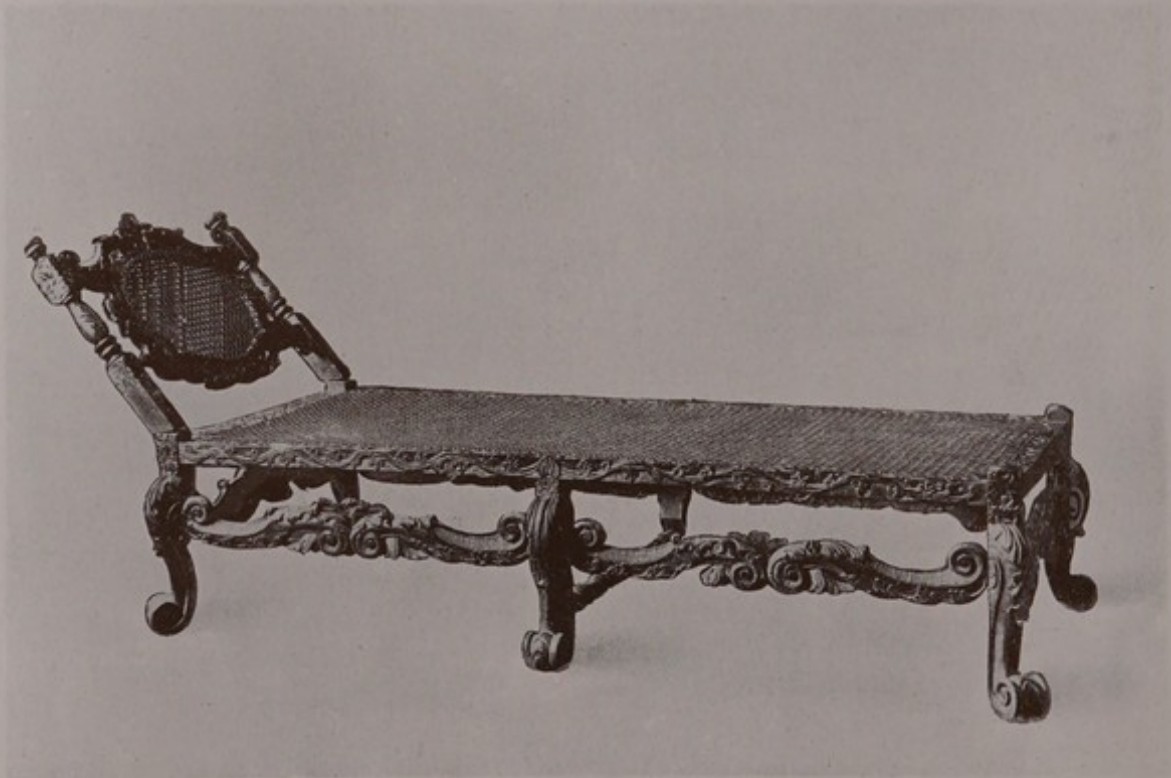




Lot 58



Lot 108



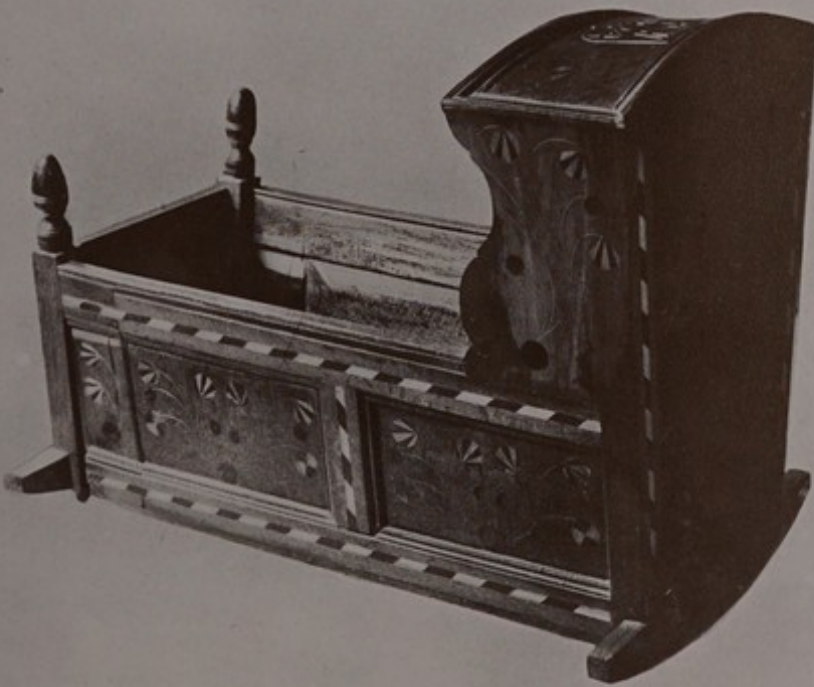
Lot 71



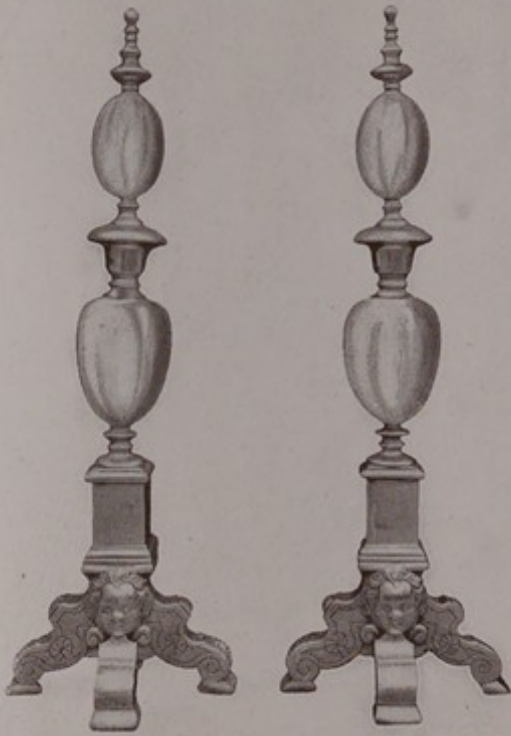
Lot 37  
One of a Pair of Chairs.



Lot 38



Lot 104



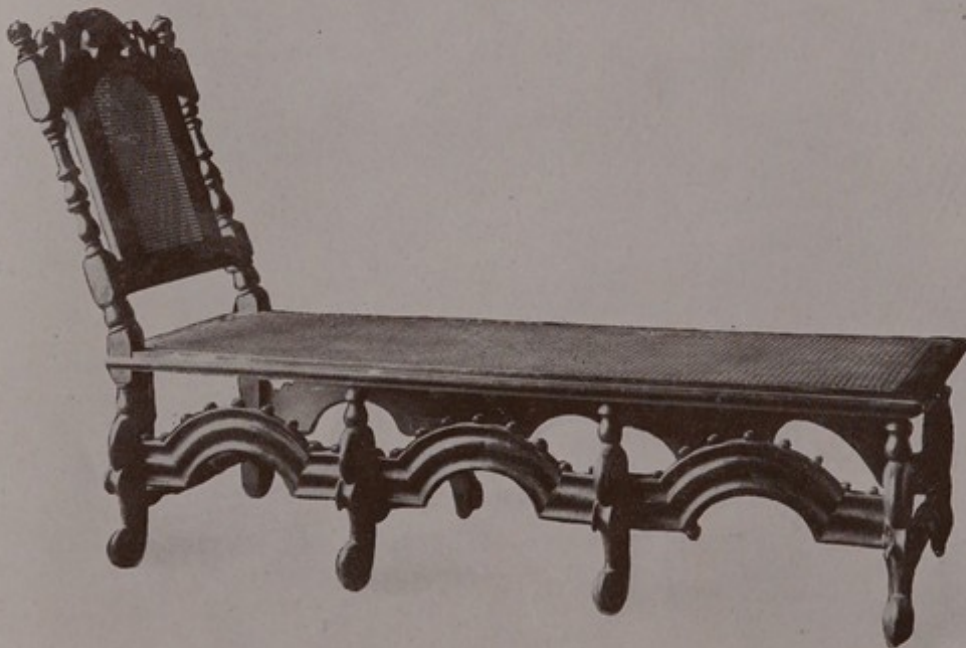
Lot 89  
Height—3 ft. 9 in.



Lot 60

Lot 30

Lot 60



Lot 27

Lot

- 144 AN INTERESTING OLD WELSH HARP on claw feet, in very fine preservation
- 145 A PAIR OF QUAIN AND EARLY FIGURES of Heraldic Leopards (1 ft. 0½ in.),  
at per piece
- 146 AN INTERESTING OLD ENGLISH CARVING, "A Stork." 1 ft. 9½ in. high
- 147 Ditto "A Monkey." 1 ft. 8 in. high
- 148 A pair of well proportioned turned Oak Lamp Stands 4 ft. 10 in. high, with tray top,  
at per stand
- 149 A PAIR OF VERY FINE QUALITY SILK VELVET CURTAINS decorated in blue,  
green and red figuring on gold silk ground. Lined maroon
- 150 Ditto
- 151 Ditto
- 152 Ditto
- 153 Ditto
- 154 A PAIR OF FINE QUALITY OBLONG DOWN CUSHIONS covered in magnifi-  
cent ANTIQUE GENOESE VELVET, with red and green figuring on yellow  
ground, which are in remarkable preservation, at per cushion
- 155 Ditto
- 156 A pair of similar but smaller square shaped cushions in the same covering, to match
- 157 A valuable Corridor Rug, 12 ft. 6 in. by 4 ft. 6 in. decorated in blue and red figuring on  
Amber ground
- 158
- 159
- 160
- 161
- 162
- 163
- 164
- 165
- 166

END OF FIRST DAY'S SALE.

## THE SECOND DAY'S SALE.

WEDNESDAY, MAY 25th, 1921,

At 1 p.m. precisely.

The fine XVI and XVII and XVIII Century Oak, Walnut, Mahogany and Satinwood Bedroom and other Furnishings. Valuable Oriental and Early English Axminster and Woolwork Carpets. A few pieces of Sheffield Plate, Ormulu Ornaments, Pottery, etc. Mezzotints and Engravings and a small Library, including interesting works on Wales and the Welsh Families.

---

---

### BUTLER'S PANTRY.

Lot

- 167 Three fine ORMOLU CHAMBER CANDLESTICKS in varying designs, at  
per stick
- 168 A very fine pair of 18½ in. ORMOLU THREE-LIGHT CANDELABRA at each
- 169 A valuable pair of LOUIS XV 18½ in. ORMOLU THREE-LIGHT CANDELABRA  
at each
- 170 A very valuable 2 ft. 9 in. ORMOLU TABLE LAMP of Corinthian column design on  
handsome plinth and with cut glass oil receiver
- 171 Ditto
- 172 Ditto
- 173 Ditto

*Note.*—The purchaser of the first lot has the option to take two or four at the same price

Lot

- 174 An antique Mahogany Butler's Tray and Stand  
175 Ditto  
176 An antique Steel Plate Warmer  
177 An antique Mahogany Writing Table with two frieze drawers on square legs with beaded corners  
178 An antique Mahogany Snap-top Table on pillar and claw feet  
179 An old Engraving, "Castle in The Trossacks," in carved oak frame  
180 A valuable old Iron Fire-back in Nautical design, 2 ft. 3 in. by 1 ft. 10 in.  
180A A very fine 16 in. Adam's period Urn of dainty design, with reeded band decoration  
180B A pair of valuable 8 in. Sheffield Plated Dish Warmers, at each  
180C Ditto

*Note.*—The purchaser of the first lot has the option of the next lot at same price

## HOUSEKEEPER'S ROOM.

- 181 An old pewter Condiment Set, comprising :—Pepper Box, Mustard and Salt Stand  
182 A set of decorated black Wedgwood Tea Service of 4 pieces including large and small Tea Pots  
183 A fine old Transfer Spode Jug  
184 A valuable China Jardiniere or Wine Cooler with hand-painted decoration and also small similar vase and stand  
185 An old Wedgwood basket-work Teapot and sundry old china  
186 A set of eight antique mahogany Dining Chairs, with ebony inlaid splats, with ball centres, including seven single chairs and one arm-chair, at per chair, to count as nine  
187 A HIGHLY DECORATED AND UNUSUALLY LARGE DRESDEN DESSERT SERVICE, with hand-painted floral design and open work borders, of 83 pieces, comprising :—4 Stands, 12 Circular Dishes, 67 Plates, at per piece  
188 A FINE WEDGWOOD STONE CHINA DESSERT SERVICE, in floral decoration, of 23 pieces, comprising :—4 shaped Dishes, 19 Plates, at per piece  
189 A very fine EARLY ENGLISH INLAID WALNUT BUREAU, with finely inlaid interior fittings and original brass furniture  
190 An antique copper Coal Scuttle  
191 A very valuable ANTIQUE INLAID MAHOGANY CIRCULAR LIBRARY TABLE, with leather inset top on pillar, and very finely carved claw feet  
192 A valuable antique Barometer, with silver dial by Pozzi, Liverpool  
193 An antique mahogany snap-top Dining Table, on reeded pillar and brass toe feet  
194 An antique 4 ft. 3 in. Brass Fender, with steel panel on claw feet, and set of steels  
194a Two pieces of VERY VALUABLE EARLY PETITE POINT NEEDLEWORK, 21 in. by 15 in. and 16 in. by 14 in., at per piece  
195 A Pair 9 in. Brass Candlesticks on circular bases. Also another pair of 9 in. Brass Candlesticks, at per pair

## KITCHEN.

Lot

- 196 A VERY VALUABLE GRANDFATHER'S CLOCK with brass dial, by Moses Evans, Llanddoget, in oak and crossbanded case with reeded pillar corners
- 197 A Valuable Antique Copper Engraved pattern Warming Pan
- 197a Ditto

## THE OLD KITCHEN.

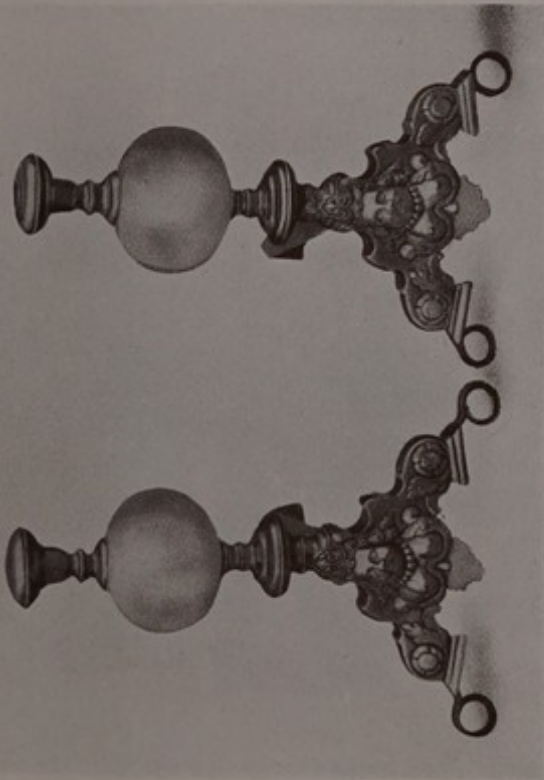
- 198 A VERY FINE 7 ft. by 2 ft. 3 in. OAK DRESSER, fitted with three doors, the whole being very finely carved, including a frieze panel, the doors having a shaped and moulded Jacobean panel centre, and the decoration being also carried out on the sides as well as front. The interior is fitted with sliding trays
- 199 A VERY FINE OAK HANGING WARDROBE, 4 ft. 9 in. wide, in the same design with the decoration carried out on both ends. This lot is fitted with two enclosed drawers

## CARPETS.

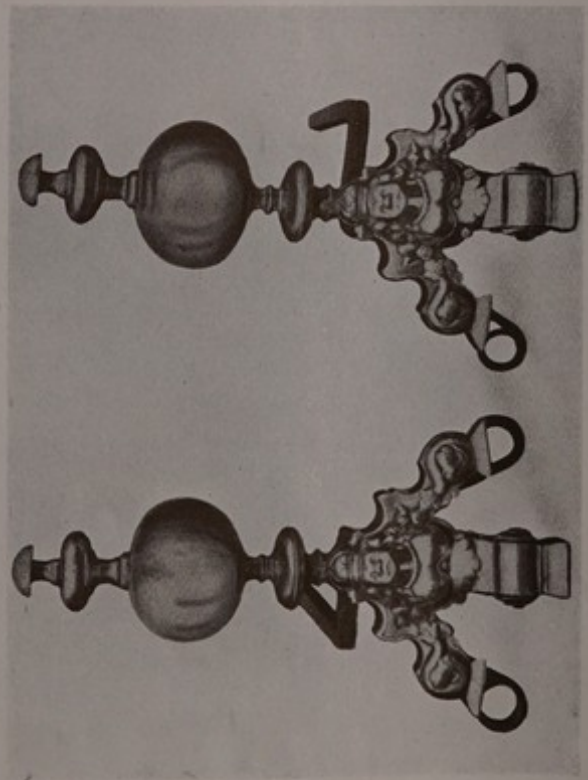
- 200 An old Eastern Corridor fringed Rug, in red, yellow and green design, 12 ft. 3 in. by 5 ft. 3 in., in Dining Room
- 201 A VERY VALUABLE GEORGIAN NEEDLEWORK BORDERED CARPET, on old rose ground, with large floral design, 14 ft. 3 in. by 10 ft. 9 in., in the State Bedroom
- 202 A VERY VALUABLE EARLY ENGLISH AXMINSTER, CRIMSON GROUND AND BORDERED CARPET, in cream ribbon design with crimson and floral pattern border, 13 ft. 6 in. by 10 ft., in Drawing Room
- 203 A VALUABLE PERSIAN RUG, 10 ft. by 6 ft. 3 in., with very fine red, blue and white coloured pattern, on gold ground, in Dining Room
- 204 A pair of OLD EASTERN FRINGED CORRIDOR RUGS (sewn together) with red ground, and green and yellow design, on white figured border. Measurements all over 12 ft. 3 in. by 8 ft. 9 in., in Oak Hall
- 205 An OLD TURKEY BORDERED CARPET, 16 ft. 3 in. by 11 ft., in the conventional red, blue and green design, in Drawing Room
- 206 An OLD TURKEY BORDERED RUG, 14 ft. 3 in. by 12 ft. 6 in., in coloured hexagonal design in amber, green, and white figuring, in Oak Parlour
- 207 An OLD ORIENTAL FRINGED CORRIDOR RUG, 6 ft. by 4 ft. 3 in., in Oak Hall
- 208 An ORIENTAL HEARTH RUG, 5 ft. 6 in. by 3 ft. 6 in., in Old Kitchen
- 209 A VERY HISTORICAL LOT, being the ORIGINAL WOOL-SACK which was removed from the House of Lords during the time of Cromwell by the Earl of Lindsey, the Lord Great Chamberlain. The same is covered in a very valuable and FINE QUALITY PERSIAN RUG, with loose cover in Crimson Cloth with gold braid trimming; on view in the Drawing Room

## KITCHEN CORRIDOR.

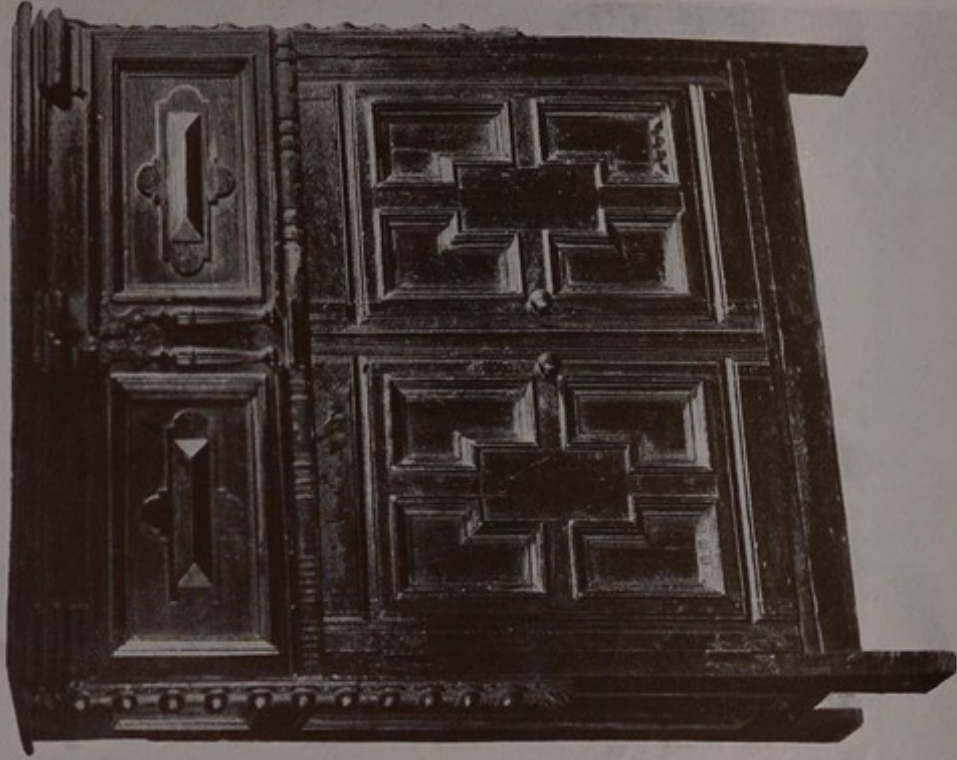
- 210 A valuable old Print, "Grimthorpe, Seat of the Earl of Lindsey," and Autographed Letter from H.M. Queen Victoria, both framed and glazed
- 211 A very quaint antique Thief Catcher
- 212 A valuable antique mahogany Oval Pembroke Table, on pad feet
- 213 A pair of very quaint early Fizi Carvings, at per piece



Lot 41 Height - 20 in.



Lot 79 Height - 22 in.



Lot 240





Lot 39



Lot 80

## FIRST FLOOR CORRIDORS.

- Lot
- 214 A white earthenware two-handled Vase, decorated in vine leaf design
- 215 A set of TWELVE INTERESTING, VALUABLE AND PROFUSELY CARVED SPLAT-BACKED CHAIRS, on shaped legs with carved knees, and perforated and carved shaped seat rails; covered in OLD SPANISH GOLD GROUND and floral decorated embossed LEATHER, with fringe
- 216 A well carved old Oak shaped Panel, three lions passant
- 217 A PAIR OF FINE OLD GEORGIAN CARVED WOOD CONSOL TABLES, with shaped antique marble tops. (One of these is in the Oak Guest Chamber).  
At per table.
- 218 A VALUABLE 4 ft. 10 in. EARLY WELSH OAK HUTCH, enclosed by two doors, having incised carved top oblong panel in geometrical design, the two lower panels being plain, and the sides panelled
- 219 A VALUABLE OLD WALNUT LONG SEAT, with cane bottom, on finely shaped carved legs on bulbous supports, having a shaped, carved, and perforated frieze, the under-rails and back legs being finely turned
- 220 A Set of six VERY VALUABLE XVII CENTURY WALNUT HIGH-BACK CHAIRS, with hand wrought moulded frames, dual cane panel backs, and cane seats, on shaped legs and turned under-rails, at per chair
- 220a A Valuable Bronze "Owl" Ornament, over Drawing Room door (inside)

## SIR RICHARD WYNN'S ROOM.

- 221 A VERY VALUABLE EARLY WELSH OAK DOWRY CHEST, 4 ft. 11 in. by 1 ft. 7 in. wide, the frieze rail being carved in Jacobean channelling, the top oblong frieze panels being in triple leek flower design, the styles of the two doors being well carved in Guilloche design, as also the bottom rail, and the panels of the former are well carved in geometrical rose design, the centre panel between the doors being carved with the Wynn and Middleton of Chirk Castle Coat of Arms—first quarter, three eaglets in fesse—second quarter, three stag heads in chevron—third quarter, three lions passant—fourth quarter, three heads in profile in chevron. Panelled ends on boss feet. This was the marriage chest of Sara, daughter of Sir Thomas Middleton, of Chirk Castle, who married Sir Richard Wynn. *Vide* illustration on page 45
- 222 A Pair of Fine Steel engravings in Hogarth frames, "Earl of Oxford" and "Earl of Lindsey," and a larger one of the "Rt. Hon. Earl of Lindsey," at each.
- 223 A REMARKABLY FINE JACOBEAN OAK FOUR POSTER BEDSTEAD, with ORIGINAL JACOBEAN WORKED HANGINGS AND BED-COVER, in blue branch and leaf design on a white ground, which were worked by Mary Wynn. The back top frieze is carved in Jacobean channelling, the well-carved centre arched recess panel being finely inlaid in marqueterie, the sides are carved in linenfold design, with Caryatides carrying the top frieze. The posts are carved in the Tudor rose design and carry a fine canopy carved in countersunk bead design with a shaped pediment. For illustration see page 52
- 224 Three fine old Steel Engravings in Hogarth frames: "Sir Richard Wynn, Bart.," "Sir John Wynn, Bart.," "Peregrine, third Duke of Ancaster." At each.
- 225 A VERY VALUABLE JACOBEAN OAK CENTRE TABLE, 3 ft. 7 in. by 2 ft. 3 in., with godroon edge, drawer in frieze with carved facade design under, on handsome carved Acanthus and godroon bulbous legs with stretcher-rails

Lot

- 226 A fine old Engraving "His Grace, First Duke of Beaufort," and twin circular Engravings "Harley, Earl of Oxford" and "Sir Watkin Williams Wynn, Bart.," both in Hogarth frames, at each
- 227 A VERY INTERESTING OLD OAK SWING TOILET MIRROR in finely carved and shaped frame, on a well carved base in dragon design, with a drawer
- 228 An interesting old autographed Engraving, "Peregrine Bertie, Lord Willoughby de Eresby"
- 229 A valuable antique perforated Brass Mounted Fender, 3 ft. 5 in. long
- 230 A valuable antique MAHOGANY SQUARE TRAY-TOP BEDSIDE CUPBOARD on spindle legs, with similar cross understretchers and circular tray

## THE EARL OF LEICESTER'S ROOM.

- 231 A 3 ft. 3 in. pierced Brass-mounted Bedroom Fender
- 232 A VERY INTERESTING EARLY JACOBEAN FOUR POSTER BEDSTEAD with break back, the lower portion being in three panels; the upper portion being divided into carved arch panels, surmounted by a carved frieze with Lion passant as centre, which is supported in centre by Caryatides, fine turned pillars supporting a well carved canopy
- 233 A VERY VALUABLE EARLY ENGLISH OAK DRESSING TABLE, 3 ft. 10 in. by 2 ft. 5 in., with finely carved edge, the top stringing to frieze being well carved in counter-sunk beading and the lower stringing in fine circular Guilloche design, the centre being in dual inverted facade design with fleur-de-lys points; the whole being supported on shaped legs on claw and ball feet with perforated brackets
- 234 A VERY SIMILAR TABLE which has been converted into a Washstand with fitted top and carved back
- 235 The old blue and white Toilet Ware of ten pieces
- 236 An antique Mahogany Square Tray-top Bedside Cupboard on spindle legs and similar cross stretchers, and circular tray

## THE STATE BEDROOM.

This ROOM WAS USED BY QUEEN ELIZABETH AND CHARLES I. on their stay at Gwydyr Castle, and is known as SIR JOHN WYNN'S ROOM.

- 237 AN EXTREMELY VALUABLE CHARLES II ARMCHAIR with dual cane panel back in finely carved and perforated frame in rose and leaf design, the centre of the top rail being carved in cherub's head; the arms being finely shaped and carved, and the whole being supported on twisted rails; the seat rail is carved in leek flower design and the front lower rail is extremely well carved in the similar design as the top rail
- 238 A VERY VALUABLE PAIR OF WILLIAM AND MARY HIGH BACK CHAIRS with very finely carved splat backs in S. scroll with carved perforated centre in floral design on beautifully turned legs with shaped cross under-stretchers, and turned tie terminal



Lot 221



Lot 253



Lot 239

Lot

239 A MAGNIFICENT AND EXTREMELY RARE AND VALUABLE ELIZABETHAN OAK FOUR POSTER BEDSTEAD IN WHICH QUEEN ELIZABETH AND CHARLES I. BOTH SLEPT, the same being most elaborately carved and in a fine state of preservation. The back is broken up into 5 vertical panels, which are well carved in bust and quaint smaller panel designs, with 3 larger panels above, two of which are carved with inverted W. and vine and grape design, the centre panel also being carved. Four Caryatides support a frieze boldly carved in convex godroon design, and bearing the date 1568 in centre. The posts are exceptionally well shaped and carved in the Tudor Rose design with the Wynn crests of Eaglets in fesse and lions rampant, which are worked prominently into the scheme. The foot is very finely and richly carved in 3 panels with bust design centres under which is a finely carved rail. The tester is well panelled and the canopy frieze is profusely carved in vine design, finished above in beautifully perforated carving. For illustration see opposite page



Lot 244



Lot 247

Lot

- 239 THE MAGNIFICENT AND EXTREMELY VALUABLE ELIZABETHAN OAK FOUR-POSTER BEDSTEAD IN WHICH QUEEN ELIZABETH AND CHARLES I BOTH SLEPT. *Vide* pages 46 and 47 for detailed description and illustration.
- 240 A VERY VALUABLE AND WELL PROPORTIONED 3 ft. JACOBEOAN OAK CABINET, the upper portion being divided into two panels with applied oblong bosses and applied pendants between, the frieze below being carved in channelling design, and the lower portion being enclosed by panelled doors carved in geometrical design. For illustration see page 41
- 241 A Pair of fine old Ebony Armchairs with elaborately inlaid brass splat backs, arms and rails, on twisted supports and with ivory terminals. At per chair
- 242 A REMARKABLY FINE JACOBEOAN OAK CENTRE TABLE, 3 ft. 4 in. by 2 ft., with godroon edge, the frieze being fitted with two drawers, and well carved in leek flower and rose design, supported by perforated brackets, and supported on very finely carved bulbous legs in Acanthus and godroon design, the upper member of the corners of the frieze being of channelling design, with under rails on bulb feet. Dated 1644.
- 243 A VERY INTERESTING OLD OAK SWING TOILET MIRROR, in exceptionally fine carved frame, on reeded supports, with turned terminals and on incised carved base, fitted with drawer
- 244 ANOTHER VERY FINE JACOBEOAN OAK CENTRE TABLE, 4 ft. 2 in. by 3 ft. 7 in., with carved godroon edge, the frieze being in circular guilloche with vertical godroon design below, supported by perforated brackets on very fine carved bulbous legs in Acanthus and godroon design, with lion mask terminal members, and with under-rail on large boss feet. For illustration see opposite page
- 245 A Fine old Mezzotint in Hogarth frame, "Charles I in Armour," and also another ditto, "Sir John Wynn, Bart. At each
- 246 Two Fine old Spode Blue and White Jugs and Basins
- 247 A VERY VALUABLE AND WELL PROPORTIONED 4 ft. 9 in. by 2 ft. 1 in. WELSH BRIDE'S CHEST, the lower portion being enclosed with two triple-panel doors, the upper oblong panel being well carved in geometrical and floral design, the frieze above being treated in the same manner; the top portion being enclosed by two panelled doors with a centre panel between, also similarly treated, the styles and frieze being finely carved in guilloche design; the centre of the latter, which is carried on turned supports, bears the inscription I.A. 1662. K.P., *i.e.* I. Anne Katherine Panton (daughter of Mr. Panton, of Plas Gwyn, an Anglesea squire who founded Newmarket Races), she having married the Fourth Duke of Ancaster. For illustration see opposite page
- 248 A very fine 3 ft. 2 in. Old Brass Fender with steel panel, complete with uprights and ormolu mounted steel implements
- 249 A PAIR OF FINE 2 ft. 8 in. GEORGIAN CONSOL TABLES with antique maroon and green marble tops. At per table
- 250 An Antique MAHOGANY SQUARE TRAY-TOP BEDSIDE CUPBOARD, on spindle legs, and similar cross under-stretcher and circular tray

## OAK GUEST CHAMBER.

- 251 A VERY VALUABLE AND HANDSOME JACOBEOAN OAK FOUR POSTER BEDSTEAD, the lower portion of the back being arranged in two geometrical panels with elaborately carved Cabochon centres, the upper portion being treated in two very finely carved arched panels, divided by styles with Caryatides supporting a finely carved channelled design frieze. The posts are beautifully carved, shaped and decorated in the rose design with carved heads as the central feature. The foot is finely carved in two shaped panels in Dragons and Anno 1662, the whole being surmounted by a panelled tester and very finely carved frieze, finished in a fine fleur-de-lys design perforated carving

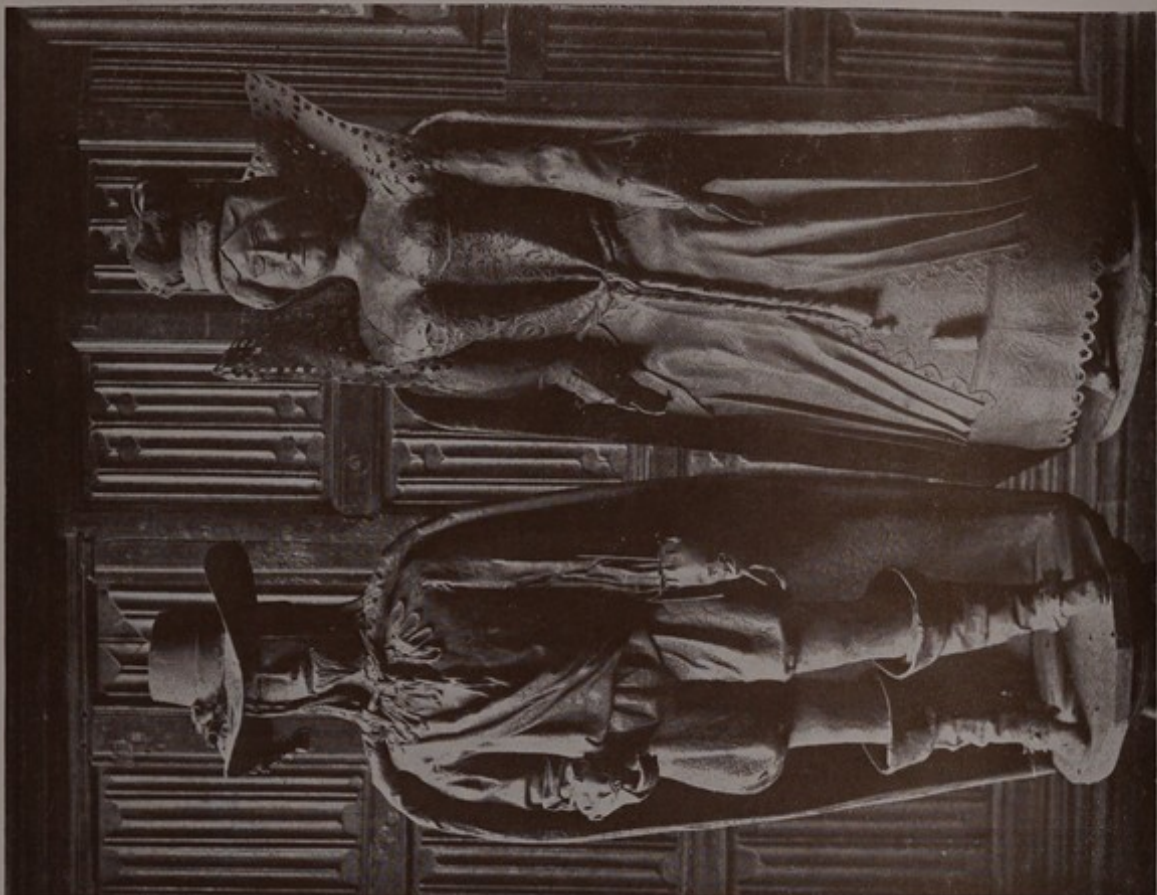


Lot

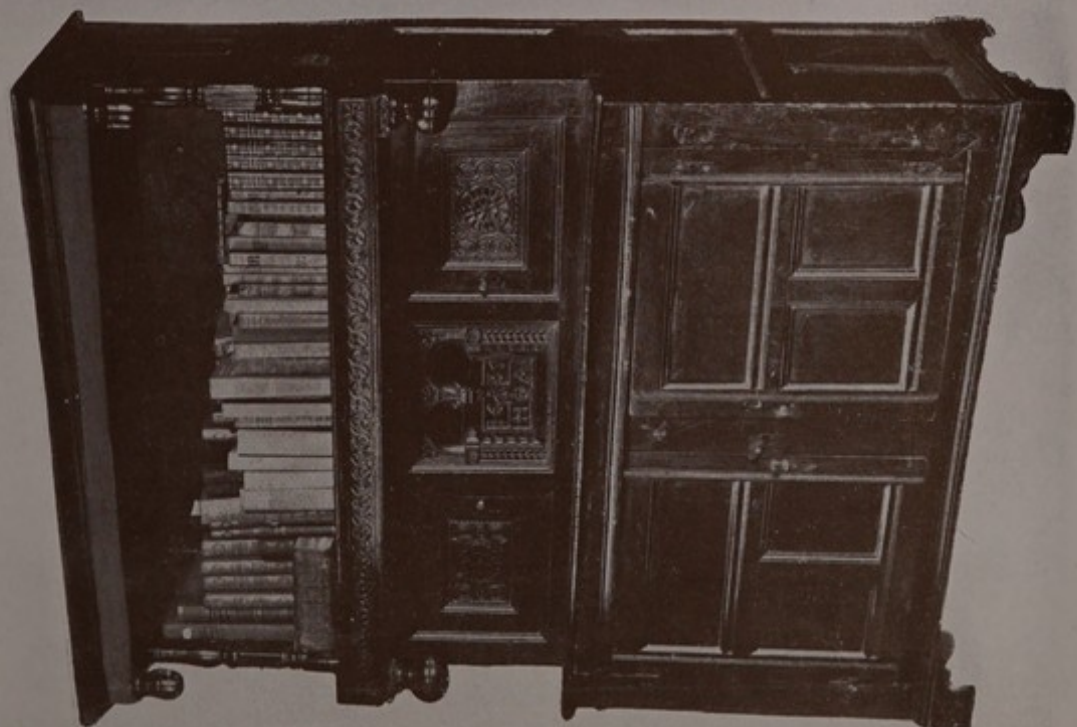
- 252 An interesting Ebonized and brass inlaid adjustable Bedside Step Armchair
- 253 A VERY VALUABLE AND EXCEPTIONALLY WELL CARVED 5 ft. 2½ in. by 2 ft. 1½ in. JACOBEOAN OAK CABINET, the lower portion being enclosed by two very fine geometrical panelled doors with a carved cherub in a star centre; the same being framed in finely carved styles in fruit design, with Caryatides above supporting the upper portion which is similarly treated; also with Caryatides supporting a finely carved frieze in dragon and cherub design; the top portion being internally fitted with two long and six short drawers with cabinet in the centre, the panel of which is finely carved in high relief depicting a winged figure with horn, riding on a dolphin. *Vide* illustration on page 45
- 254 A VERY FINE CHARLES II. WALNUT CANE PANELLED CHAIR the frame being well carved in Leaf, Rose and Tulip design, and the seat rail being carved in trellis design, the whole being on twisted supports and under-rails with finely carved front rail in Rose and Leaf design
- 255 A valuable and handsome gilt and Malachite mounted Alabaster Writing Table set comprising:—Blotter, Inkstand, Pair of Candlesticks
- 256 Eleven pieces of old Blue and White Toilet Ware
- 257 A fine Mezzotint "Charles I," after Vandyke, by J. Smith, in Hogarth frame
- 258 An old Ruby Cut Glass Tankard with pewter mount, also Opal ditto at each (a.f.)
- 259 A fine old Faience Mug with pewter mount and Apostle decoration
- 260 A pair Crayon drawings by J. F. Bacon, 1911, "Earl Beauchamp" and "Earl of Carrington, K.G."
- 261 A VERY VALUABLE AND ANOTHER TYPICAL GWYDYR XVI CENTURY OAK CENTRE TABLE, 3 ft. 3 in. by 2 ft., with carved Godroon edge, the frieze being fitted with drawer, and finely carved in bold scroll design with carved mask centre, supported by perforated brackets on carved bulbous legs in Acanthus and Godroon design with carved terminals in quaint designs, and with under-rails on boss feet
- 262 A 3 ft. 6 in. antique Brass mounted perforated fender on ball feet, and set of steels
- 263 An old Oak 3 ft 8 in. by 2 ft. 11 in. Washstand with fitted tray top and carved frieze, on turned legs
- 264 A pair Sepia drawings, "Gwydyr Private Chapel," by H. Fletcher, in Hogarth frames, at per drawing
- 265 An antique MAHOGANY SQUARE TRAY-TOP BEDSIDE CUPBOARD, on spindle legs and similar under-stretchers and circular tray

## SMALL SATINWOOD ROOM.

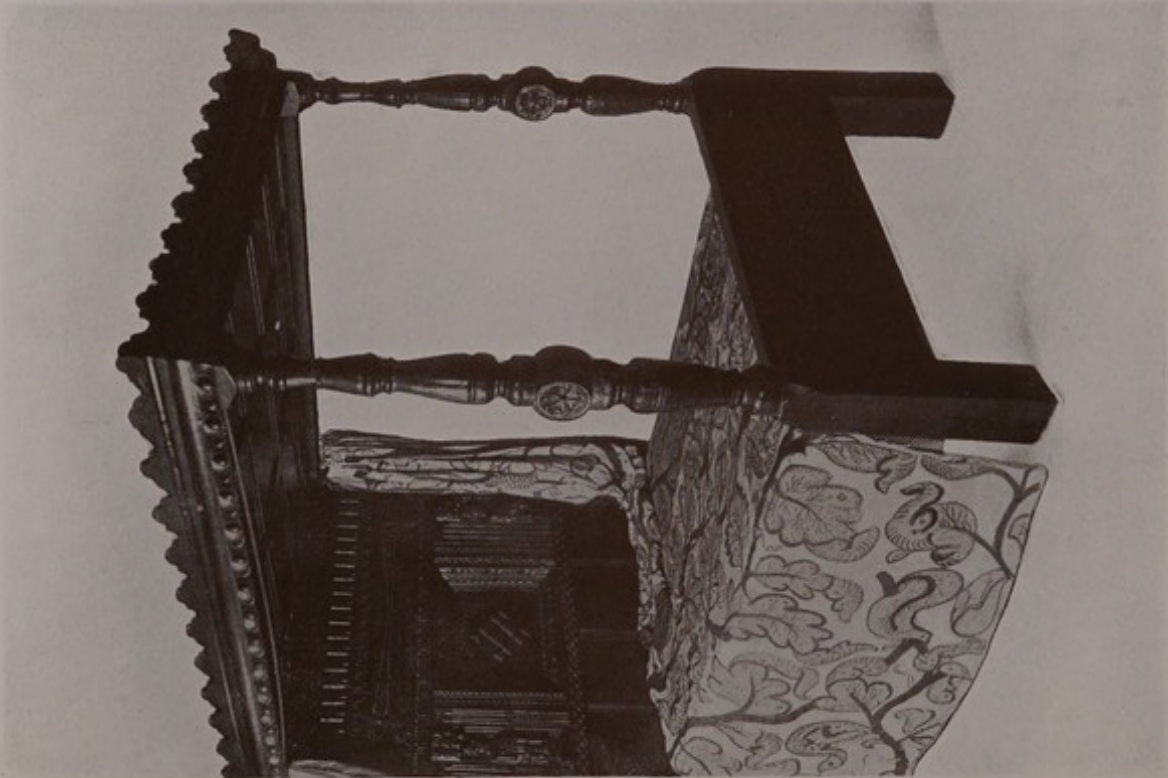
- 266 A very fine EBONY INLAID SATINWOOD SHERATON SOFA, with scroll ends and upholstered in light green tapestry
- 267 A valuable EBONY INLAID SATINWOOD WORK TABLE, 1 ft. 3 in. by 1 ft. 10 in., with fitted drawer, on turned legs
- 268 VERY VALUABLE 3 ft. 3 in. SATINWOOD SERPENTINE FRONTED DRESSING CHEST with fine brass furniture, on splay feet
- 269 A valuable 3 ft. 6 in. EBONY INLAID SATINWOOD BREAK FRONT DRESSING TABLE, with frieze drawer and brass furniture, on turned legs
- 270 A SATINWOOD SWING TOILET MIRROR, on break fronted stand, fitted with three drawers
- 271 A valuable ANTIQUE SATINWOOD PEDESTAL BEDSIDE CUPBOARD, with tray top on spindle legs and under-stretcher with circular tray



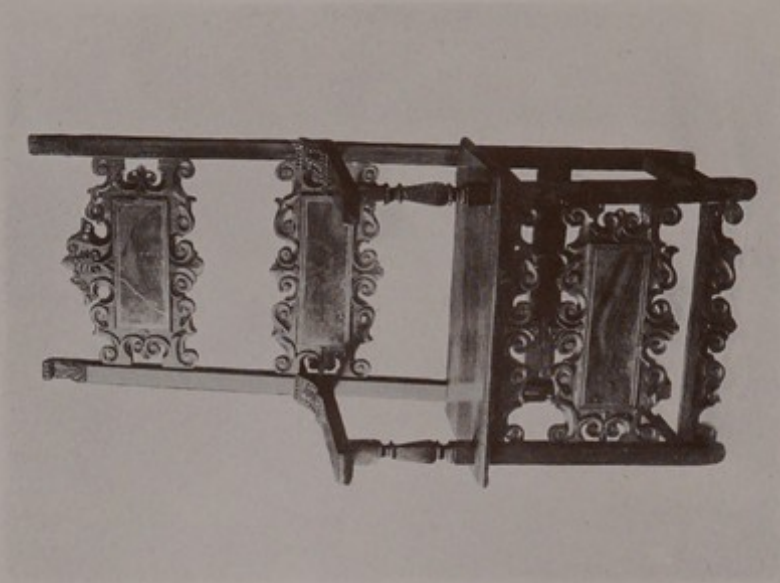
Lot 32



Lot 59



Lot 223



Lot 133

One of a Set of 4 Chairs ; also 2 Smaller ditto.

Lot

- 272 A PAIR OF SHERATON SATINWOOD CANE-SEATED CHAIRS, at each
- 273 A well executed Water Colour Drawing "The Old Bridge at Bettws-y-Coed," by Ella Duncan, in gilt frame
- 274 An 8 in. Worcester Bowl decorated in blue with motto "God Save the King," (a.f.) and small plate in sepia, "To the Memory of Queen Caroline"
- 275 An interesting early Pottery Inkwell in heart shaped design with quaint mask decoration
- 276 A valuable Water Colour Drawing, "Period Uniform of the Lord Great Chamberlain approved by His Majesty George V, 1911—Rt. Hon. Lord Carrington"
- 277 An Autograph Engraving "Sir Watkin Williams Wynn and family with horse," in Oak and Gilt Frame
- 278 Two old Prints "Horse Studies"
- 279
- 280

## QUEEN ALEXANDRA'S ROOM.

- 281 A fine antique Brass Fender with steel panel, on claw feet, complete with standard and set of steels
- 282 A four fold Screen, covered in embossed leather with gold design on green ground

## DUKE OF BEAUFORT'S ROOM.

- 283 A VERY VALUABLE JACOBEOAN OAK BEDSTEAD, which is the one which was specially prepared for the Earl of Leicester when he accompanied Queen Elizabeth on her visit to Gwydyr. The same is very finely carved, the lower portion of the back being divided into two sunken panels with double-headed eagle and owl, the styles being carved in conventional floral design. The upper portion is divided into five panels, the centre one being carved with mailed figure and the arms of England, France, and Wales, quartered, another panel having L.L. entwined with coronet (but this is inverted), another panel being in foliage and other designs. This is surmounted by a carved godroon design frieze. The top of the tester is panelled with a finely carved and perforated cornice in fleur-de-lys and bird design, which is supported on finely carved posts, with carved heads in profile. The foot is carved also with profiles in arcaded panels, and surmounted by a carved eagle
- 284 An antique mahogany Swing Mirror, on base, with vertical godroon carved edge
- 285 A FOUR-FOLD SCREEN, with scalloped-shaped top, and covered in OLD ENGLISH NEEDLEWORK in Chinese taste, in very good state of preservation
- 286 A VERY VALUABLE AND WELL PROPORTIONED 3 ft. 4 in. by 1 ft. 8 in. FLEMISH CABINET, with Ebony columns, cornice, and centre panel on fine bulbous legs, with shaped under-stretcher, the lower frieze having mask decoration. The interior is well fitted and is lined with solid oak throughout
- 287 A GENTLEMAN'S VALUABLE 4 ft. ANTIQUE MAHOGANY WARDROBE (lined oak), and fitted with sliding trays and two long and two short drawers under
- 289 A framed coloured Caricature Etching, "Lord Gwydyr," entitled "A Welsh Castle," by Richard Dighton, 1818, and published by T. McLean
- 290 A Pastel Study of "Earl Carrington's Daughter," by J. H. Bacon
- 291

## LOBBY.

- Lot
- 292 A PAIR OF SHERATON MAHOGANY CARD TABLES, with Lyre supports and reeded stand, with brass toes on castors, at each
- 293 A PAIR OF FINE OLD MEZZOTINTS by McArdell, in old Hogarth frames, "Queen Charlotte" and "King George III."
- 294 An elegant ANTIQUE MAHOGANY BREAK FRONTED HEPPLEWHITE TABLE, with 3 drawers in frieze, on turned taper legs
- 295 AN ANTIQUE 3 ft. 6 in. OAK CHEST of three long and two short drawers
- 296 AN ANTIQUE MAHOGANY SWING TOILET MIRROR, on turned supports
- 297 AN ENGRAVING, "Sir Watkyn Williams Wynn, 1740"
- 298 A VALUABLE ANTIQUE MAHOGANY CHEST of four long and two short drawers
- 299 A FINE 4 ft. 0 in. by 1 ft. 6 in. ANTIQUE OAK DWARF HANGING WARDROBE with channelled frieze, the upper panels being carved in lozenge design, with geometrical floral centres, incised carved frieze, and 3 plain panels below, with panelled sides
- 300 AN ANTIQUE MAHOGANY TALLBOY CHEST of five drawers, with fine original brass ring handles
- 301 AN ANTIQUE MAHOGANY SQUARE WASHSTAND, with concave cups to top, on spindle legs and cross stretchers and tray, and fitted with a drawer

## BEDROOM No. 10.

- 302 AN OLD SPANISH MAHOGANY BOW FRONTED CHEST of three long and two short drawers
- 303 AN ANTIQUE MAHOGANY SWING TOILET MIRROR
- 304 AN ANTIQUE MAHOGANY BIDET WITH HAIR SEAT
- 304A Ditto
- 305 AN ANTIQUE MAHOGANY SQUARE WASHSTAND, fitted with concave cups, on spindle legs and cross stretchers, with circular tray and fitted with drawer
- 306 A VALUABLE HEPPLEWHITE MAHOGANY WORK TABLE on spindle legs and reeded corners, with a well fitted drawer

## BEDROOM No. 11.

- 307 A VALUABLE 4 ft. ANTIQUE MAHOGANY TALLBOY, with ebony inlay, and fitted with five drawers and brass furniture, on splay feet
- 308 AN ANTIQUE MAHOGANY TRAY-TOP COMMUNE, on square legs, with tambour front
- 309 A 3 ft 6 in antique brass-mounted perforated Fender
- 310 A 3 ft. 6 in. ANTIQUE MAHOGANY CHEST of three long and two short drawers
- 311 AN ANTIQUE MAHOGANY TRAY-TOP DRESSING TABLE, fitted with three frieze drawers, on cross scroll legs and stretcher rail
- 312 An antique mahogany Bidet, in hair seating
- 313 AN ANTIQUE MAHOGANY SQUARE WASHSTAND, with concave cup fittings, on spindle legs and stretcher, with circular tray and fitted with a drawer

## BEDROOM No. 12.

- Lot
- 314 AN ANTIQUE MAHOGANY SQUARE CABINET WASHSTAND, with folding top, on turned legs, with fitted top
- 315 An antique brass-mounted perforated Fender
- 316 AN ANTIQUE MAHOGANY SQUARE WASHSTAND, fitted with concave cups, on spindle legs and cross stretcher with circular tray, and fitted with a drawer
- 317 Ditto
- 318 Ditto
- 319 AN ANTIQUE MAHOGANY SWING TOILET MIRROR, on spindle spider frame

## ATTIC No. 3.

- 320 A very fine 3 ft. 6 in. ANTIQUE MAHOGANY INLAID TRAY-TOP WASHSTAND, with fitted top and adjustable mirror, on finely shaped reeded legs
- 320a An antique mahogany Bidet, in hair seating

## ATTIC LANDING.

- 321 A VALUABLE ANTIQUE TRAY-TOP COMMODE, fitted with drawer and enclosed by two folding doors, on square legs (1 a.f.)
- 322 An antique mahogany Luggage Stool (a.f.)

## BOOKS.

	Title.	Volumes.	Binding.
323	"Hakluyt's Voyages" ... ..	12	Cloth
324	"Royal Commission on Land in Wales" ...	7	Half bound
	"Burke's Peerage," 1900 ... ..	1	Cloth
325	"Archæologia Cambrensis," 1898-1902 ...	6	Half calf
326	"Antiquities of England," by F. Grose (illustrated) and published by S. Hopper, London, 1775 ...	4	Leather
327	"J. Strick's Antiquities" (illustrated), published by Benj. White, London, 1775 ... ..	3	Leather
328	"Warrington's History of Wales," published 1788)	2	Leather
	(4 volumes in all) ... ..	2	Cloth
329	"Pennant's Tour of Wales," illustrated with fine engravings, published by Benj White, London, 1789	2	Leather
	"Pennant's Tour of Wales," illustrated with fine engravings, published by H. Hughes, 1778 ...	1	Leather
330	"Cambria Depicta," with fine coloured plates, published 1816 ... ..	1	Half bound
	"Speeds" Maps. Published in 1631 ... ..	1	Board
331	"York's Royal Tribes of Wales," published by J. Pointer, 1799 ... ..	1	Half bound

Lot		Volumes.	Binding.
332	"Five Generations of a Loyal House," by Lady Bertie, published, 1845 ... ..	1 ...	
	"Catalogue of Nobility," by R. Dale, published by G. Gafton, 1697 ... ..	1 ...	Leather
333	"Roscoe's Wanderings in South Wales," illustrated	2 ...	Morocco
	"Malkin's Scenery of South Wales," illustrated, 1804	1 ...	Leather
334	"Bingley's North Wales" (illustrated), published by Longman & Rees, 1804 ... ..	2 ...	Leather
	"Evans' North Wales," published by J. White, London, 1802, 2nd edition ... ..	1 ...	Leather
335	"Warner's Walks in Wales" (illustrated), published 1798 ... ..	3 ...	Leather
	"Gastineau's Wales" (illustrated), published 1830	1 ...	Half bound
336	Various books on Wales ... ..	10 ...	Various
337	Ditto ... ..	10 ...	Various
338	Various Works ... ..	8 ...	Various
339	"Plas Mawr," Conway, illustrated and edited by A. and H. Baker, F.R.I.B.A., and published by Farmer & Sons, London, 1888 ... ..	1 ...	Cloth
	"Wynnstay and the Wynns" ... ..	1 ...	Cloth
340	"Letters of Horace Walpole" ... ..	7 ...	Cloth
341	Various Works ... ..	10 ...	Various
342	Ditto ... ..	12 ...	Various
343	"Picturesque Views of North Wales," by Rev. B. Broughton with 6 fine Aquatints by Alken, published 1801 ... ..	1 ...	Leather
344	"Pedigrees of Carnarvon Families," by J. E. Griffiths, 1914 ... ..	1 ...	Half bound
	"Chronicles of Lord Willoughby de Eresby from Histories," published 1846 ... ..	1 ...	
345	"Photo Album of New South Wales" ... ..	1	
	"Album of Early Portraits Queen Victoria" ... ..	1	
	"Illustrated London News," Jubilee Edition 1897, with coloured plates ... ..	1 ...	Leather
346	Various Works, dealing with Royalty & Ceremonials	15 ...	
347	"Fauna of North Wales," and 4 various volumes...	5 ...	
348	Quantity of Old Prints and Engravings		
349			
350			

NOTE.—THE FREEHOLD ESTATE, including

**The Panelled Tudor Mansion House,  
Park, Gardens, and Land,**

containing **100** acres, with Salmon Fishing, will be sold at the  
Grosvenor Hotel, Chester, on **MONDAY, May 23rd, 1921,**  
at 3-30 p.m.

# A SEPARATE CATALOGUE

IS BEING ISSUED FOR THE  
FOLLOWING DAY'S SALE,

AND INCLUDES

## THE MODERN BEDROOM AND OTHER FURNISHINGS,

EMBRACING

### The Fine Oak Bedroom & Reception Suites,

Used by H.R.H. Prince of Wales on his tour  
on H.M.S. Seraphis, to India, in 1875-1876.

(with Autograph Letters and Schedules).

CHINA.

GLASS.

INCLUDING

SERVICES, OLD COPPER PANS,

LINEN AND SOFT GOODS,

KITCHEN FURNISHINGS,

AND A LARGE QUANTITY OF MISCELLANEA,

in all about 400 Lots.

---

---

THIS SALE STARTS AT 11 O'CLOCK A.M.

---

---

Catalogues of the above, price 6d. each, which do not  
admit on view days.



